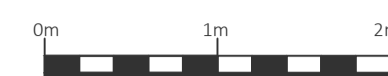
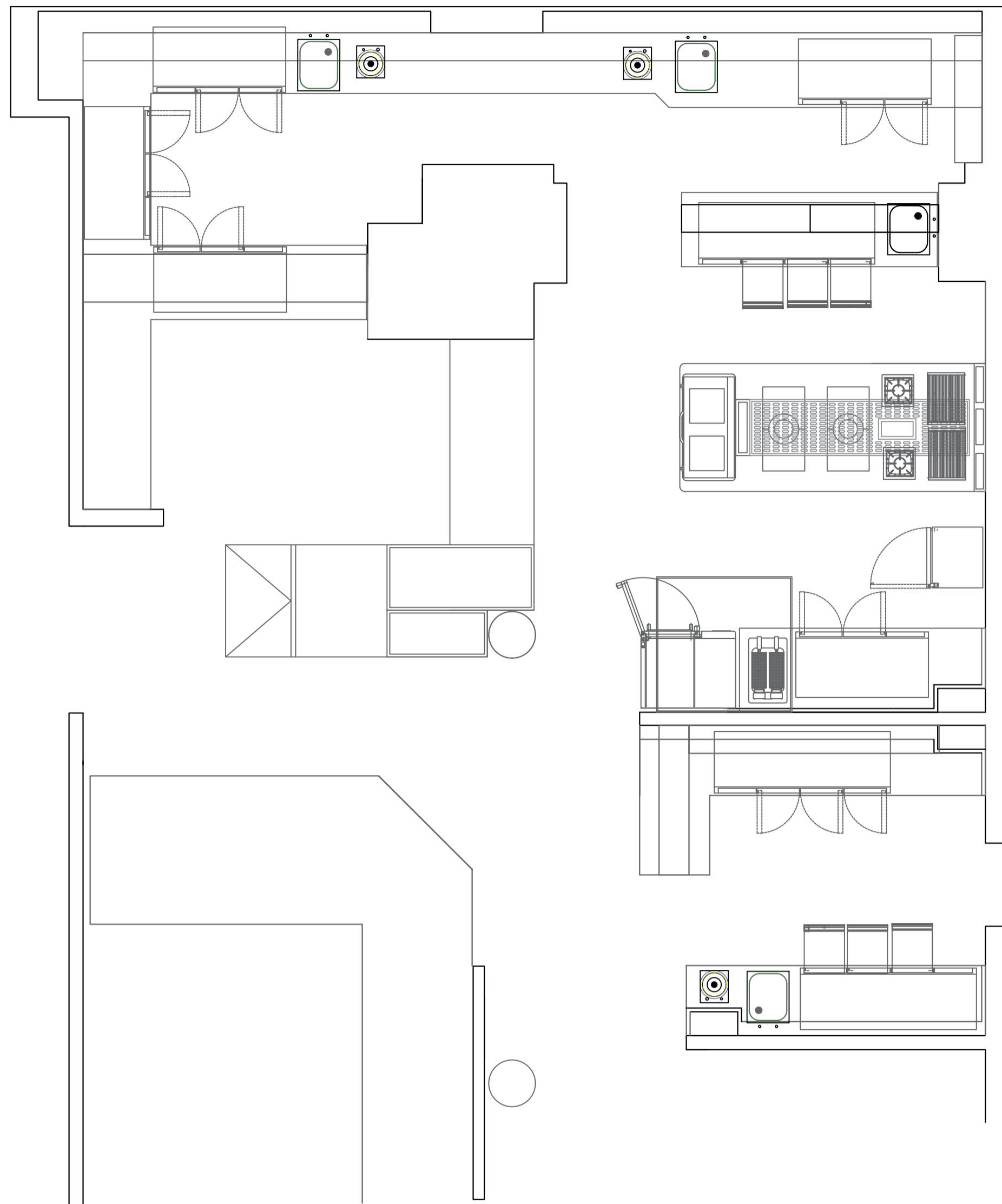
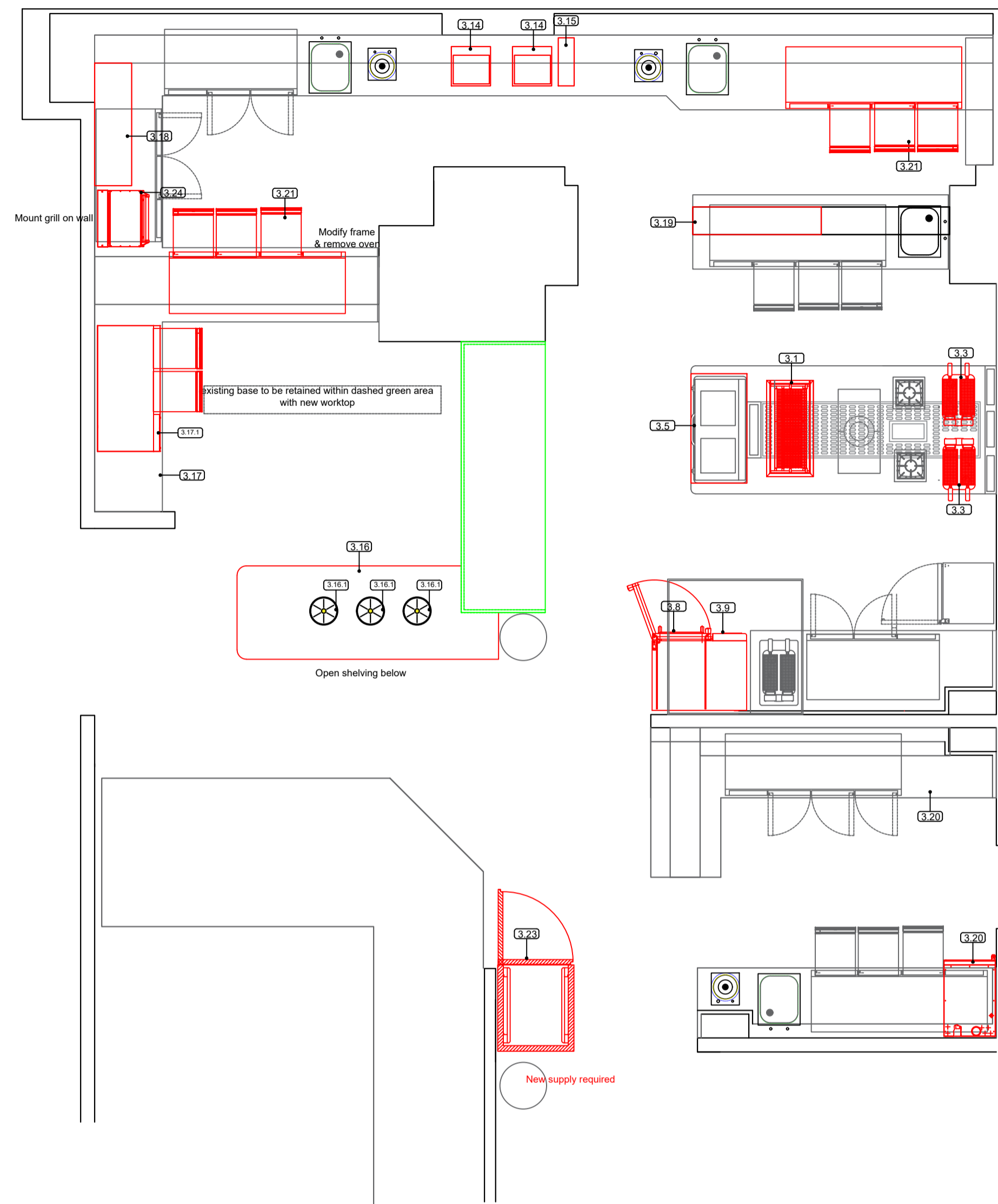


Existing Kitchen Layout:



Proposed Kitchen Layout:



Item	Manufacturer	Qty	Category
AREA 1 - RAW BAR & FOH			
1.1	HK	1	Infill void left by removing bottle cooler with shelves
1.2	HK	1	Infill void left by removing bottle cooler with framed ice well
1.3	Eurocave UK	2	V PURE L
AREA 2 - GLASSWASH AREA:			
2.1	HK	1	Modify Tabling to glasswash area
3.13	Hoshizaki	1	Ice Maker (Flake) with Integral Storage Bin
AREA 3 - KITCHEN:			
3.1	Charvet	1	MODIFY COOK SUITE to allow for robata grill
3.2	Charvet	1	Modify Cook Suite to allow for built in Fryer
3.3	Charvet	2	Built in Gas Fryer
3.4	Clay Oven	1	Bespoke Robata Grill (GAS)
3.5	HK	1	Add shelf to base of Charvet suite
3.6	HK	1	Initial Fabrication Site Works
3.7	HK	1	Fabrication Labour Visit 2
3.8	RATIONAL	1	10 Grid Rational
3.9	RATIONAL	1	6 Grid Rational (B GRADE)
		1	Note, available to wider market so can sell at any point
3.10	HK	1	Catering Appliance installation and delivery
3.11	CA Electrical	1	Electrical Modifications
3.12	HK	1	Plumbing Modifications
3.14	Multivac	2	Vacuum Packaging Machine
3.15	HK	1	Thermomix TM6
3.16	HK	1	Manufacture new pass
3.16.1	Hatco	3	Decorative Lamp
3.17	HK	1	Fabrication Modification to allow fridge below worktop
3.17.1	Foster	1	Pastry Area Drawer Refrigerator
3.18	HK	1	Wall Shelves
3.19	HK	1	Remove Saladette Frame Add Shelves
3.20	MKN	1	Wall Bracket for existing Combi oven
3.21	Foster	2	Refrigerated Counter, Work Top
3.22	Hasegawa	2	Soft Cutting Board
3.23	Williams	1	Blast Chiller Freezer, Reach-In
3.24	Lincat	1	Wall Bracket

Electrical Key:

Switched Socket		2 Number of Gangs
Single Phase Fused Spur		Refer to legend for loading
Three Phase Commando Outlet		Refer to legend for loading
Rotary Isolation		Three Phase Isolator Single Phase Isolator
Coiled Flex cable		Refer to legend for loading
Fused Spur		Refer to legend for loading
Ethernet Data Outlet:		Refer to legend for loading

Mechanical Key:

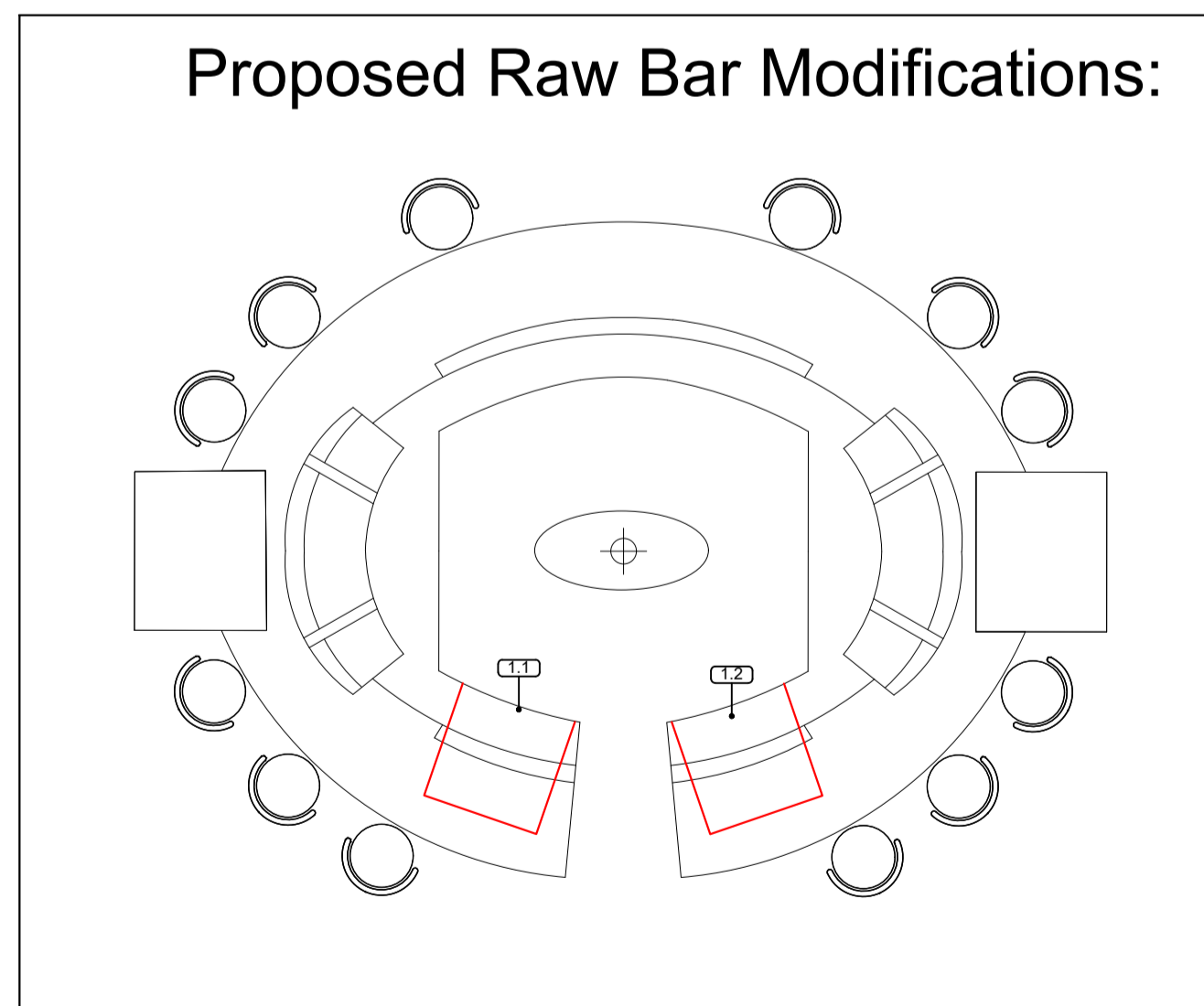
Valved Water Connection:		Hot Water: Cold Water:
Waste Connection:		
Trapped Waste Pop Up:		
Pipework Drop Locations:		
Stainless Steel Floor Gully:		

Gas Key:

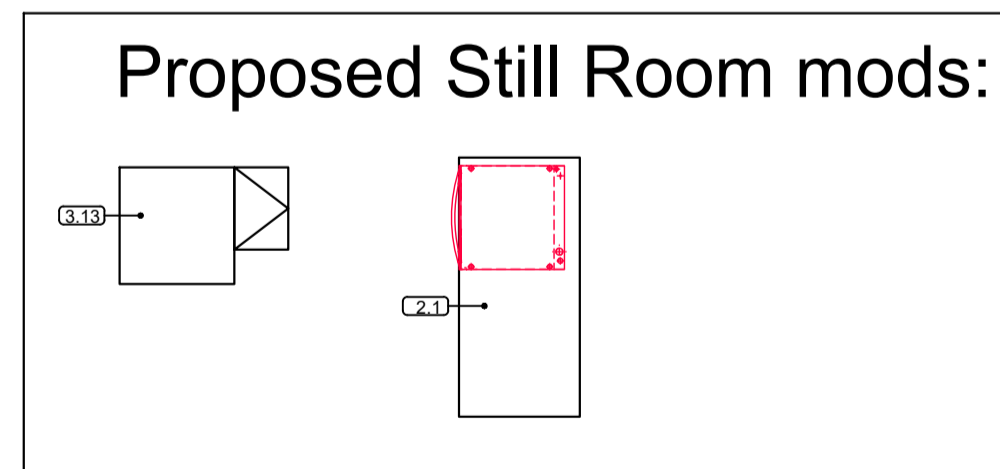
Valved Gas Outlet:		Refer to legend for 2" or 3" and pipe height
Gas Isolation Valve:		Suggested position for main contractor install

Title: **Gordon Ramsay Group**
 Project: **Caspers**
 Location: **The Savoy**
 Drawing Number: **102271**
 Revision: **1**
 Drawn by: **MC**
 Page Size: **1:20 At: A1**

Proposed Raw Bar Modifications:



Proposed Still Room mods:



Electrical Notes:
 Site electrician to provide suitably isolated supplies within one metre of each appliance in accordance with BS7671:2001. This includes the connection of coldrooms, ventilation fans interwiring of the local starter control, wiring of internal lighting for the canopy and gas interlock control panel (where applicable). No provision has been made for general switched sockets within the kitchen. Equipment earthing for all appliances in accordance with BS7671:2001 Where appliances are mobile, suitable coiled earth leads should be fitted.
Electrical Positions:
 Wall sockets from finished floor level should be generally fitted at 500mm (L/L) : 1200mm (M/L) : 2400mm (H/L).
 Wall isolators from finished floor level should generally be fitted at 1500mm with cable outlets at 500mm if required (or be positioned to avoid other services/obstructions)
 All electrical accessories within the kitchen should be metal clad or metal finish , where applicable suitable IP rated accessories need to be installed in accordance with BS7671:2001

Mechanical Notes:
 General Contractor to provide suitable isolating cocks for gas and water risers. Each appliance to be locally valved for maintenance. The appropriate stop valve/isolators to be positioned according to this drawing. Site plumber to ensure adequate volumes and pressures are achieved on all hot and cold supplies. The installation must comply with all local water board regulations, including Water Supply (Water fittings) Regulations 1999 and 'WRAS' notification prior to commencement. Where required, class 'A' air gaps must be maintained and non-return valves must be fitted to prevent back syphonage. Waste connections for combi ovens and similar to be discharged into sealed back inlet gullies (100mm diameter), otherwise a trapped tundish shall be fitted in copper or high temperature PVC. Water softeners/filters should be fitted if the hardness exceeds 7 degrees clark. HK accept no responsibility for equipment affected by limescale. Drainage serving kitchens in commercial hot food premises should be fitted with a grease separator complying with prEN 1825-1 and designed in accordance with prEN 1825-2 or other effective means of grease removal.
 Dishwater note : Water pressure required = 1.5 Bar min 6.6 Bar max. Tank feed required in accordance with local water board regulations unless appliance is fitted with a type A air gap. Water temperature: 50 deg C min 60 deg C max N.B Max temp with softner 55 Deg C (fitted if hardness exceeds 7 Degrees clark)

General Notes:
 All deliveries are assumed to be to ground floor level. If this is not the case, further costs may be incurred.
 All service points indicated are the connection points on HK equipment only. Due allowance must be made by the contractor to provide all electrical isolators, socket outlets, main gas shut off valves, water check valves and waste traps positioned to within one metre of each connection point of each appliance. All supply and extract fans installed as part of the kitchen ventilation require to be interlocked with the incoming gas supply in accordance with BS6 173:2001. This shall be the responsibility of the H and V contractor, and HK will not undertake to commission the equipment until the operation is full demonstrated. It is the clients responsibility to ensure that all drawings are approved by the local Building Control/Fire authority/EHO. All equipment dimensions shown are overall body sizes. Wall dimensions are from finished surfaces and therefore suitable tolerances should be allowed. Do not scale from drawings. Minimum door access required for all equipment 900mm. Minimum floor to ceiling height 2590mm

T: 0114 299 5290
 E: enquiries@hkprojects.com
 P: Unit S12-13, Globe Works, Penistone Road, Sheffield, S6 3AE

