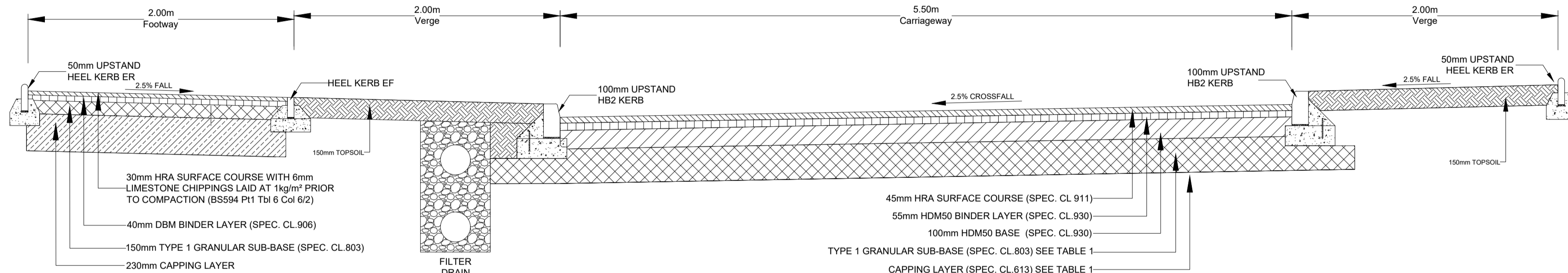
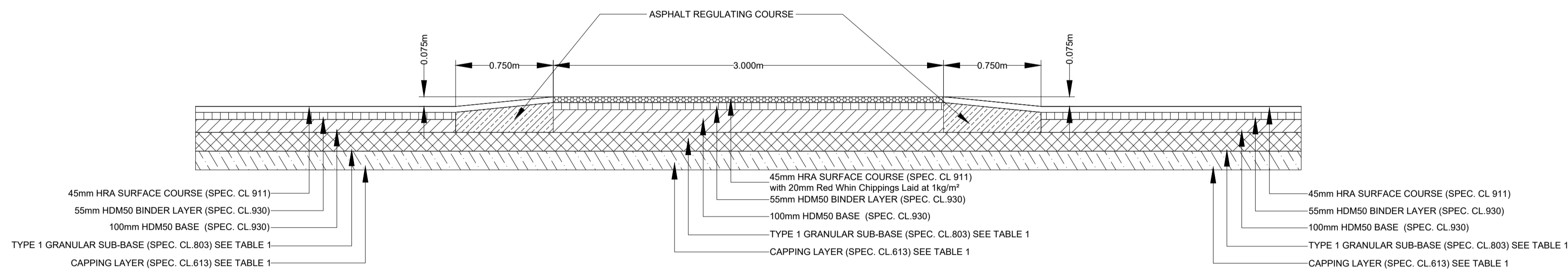


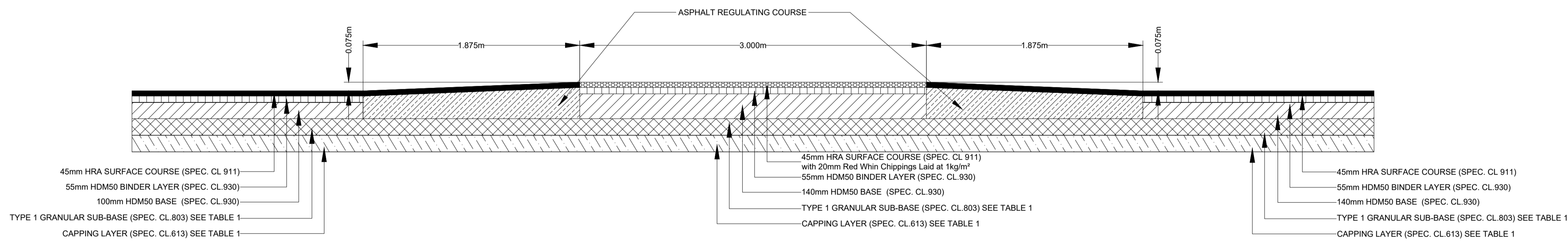
DETAIL 1: ROAD D CONSTRUCTION DETAILS (1:20)



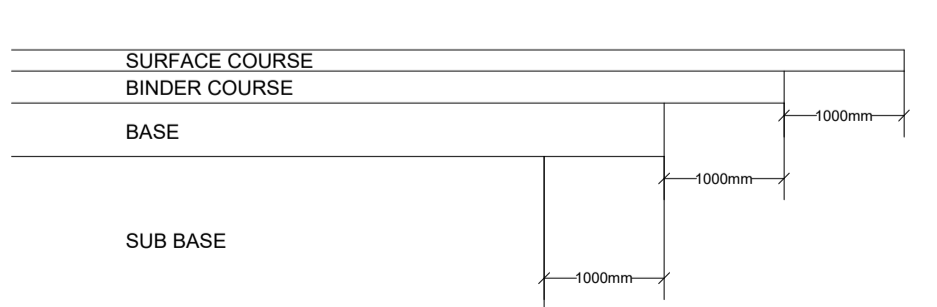
DETAIL 2: ROAD E CONSTRUCTION DETAILS (1:20)



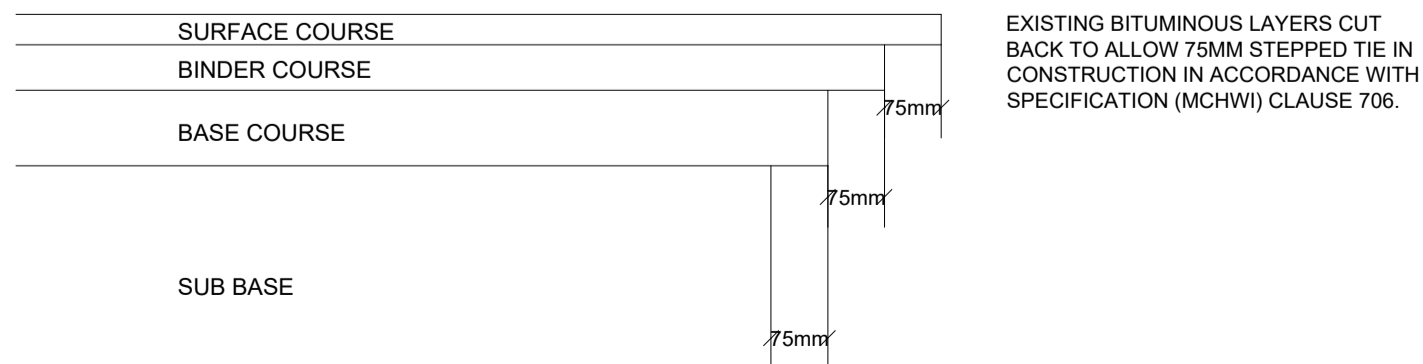
DETAIL 3: CORE ROAD E - 1 in 10 RAISED TABLE (1:20)



DETAIL 4: CORE ROAD D - 1 in 25 RAISED TABLE (1:20)



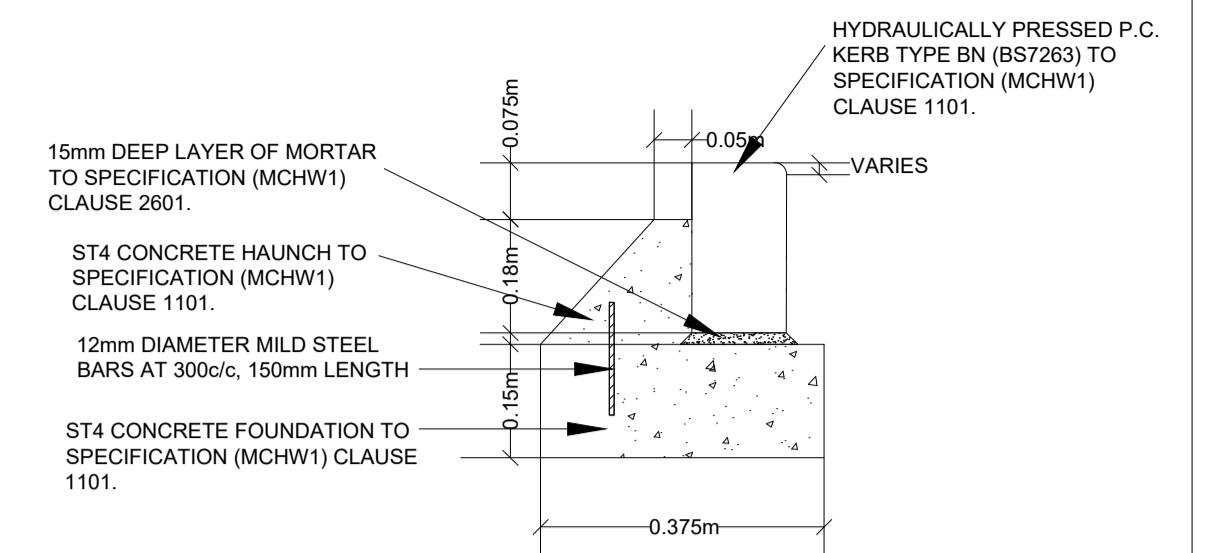
DETAIL 5: ROAD CONSTRUCTION TRANSVERSE TIE IN (NTS)



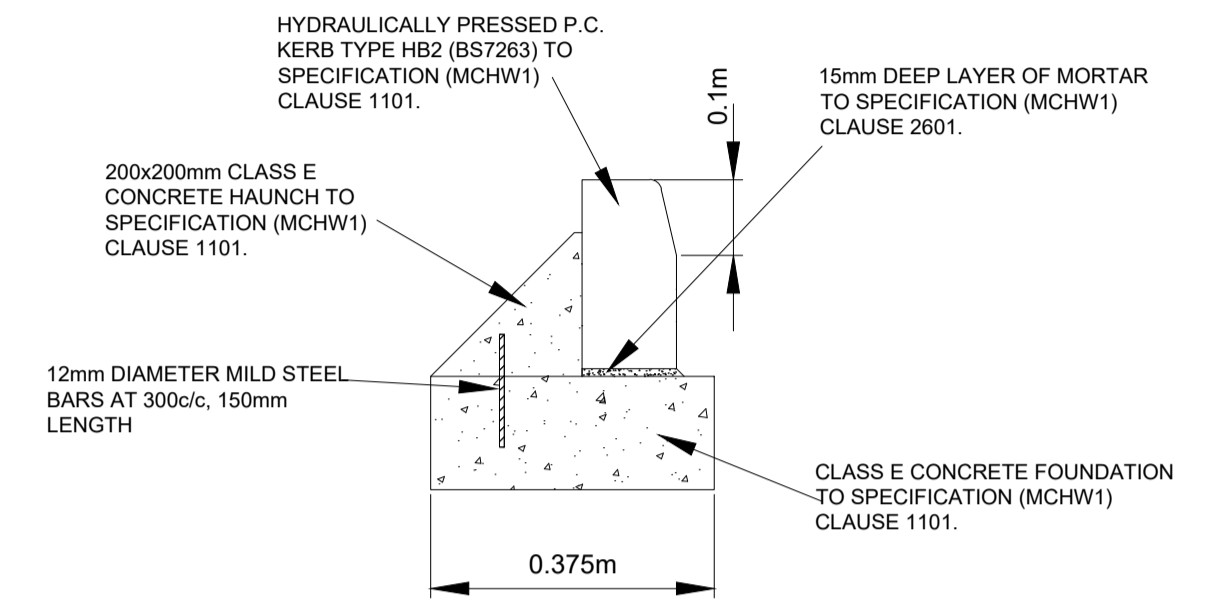
DETAIL 6: ROAD CONSTRUCTION LONGITUDINAL TIE IN (1:10)

SUB BASE	CAPPING LAYER	CBR %
285mm	450mm	>5
150mm	600mm	2-5
150mm	600mm	<2

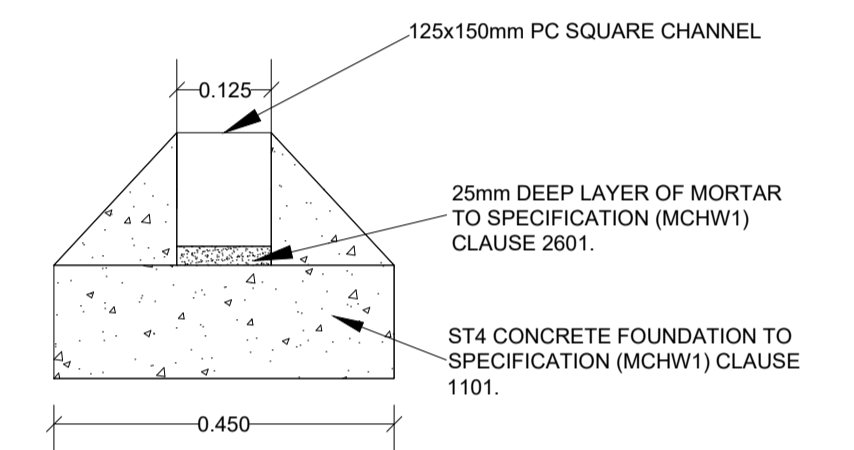
TABLE 1: SUB-BASE AND CAPPING DEPTH REQUIREMENTS (SHW CLAUSE 613 AND 803)



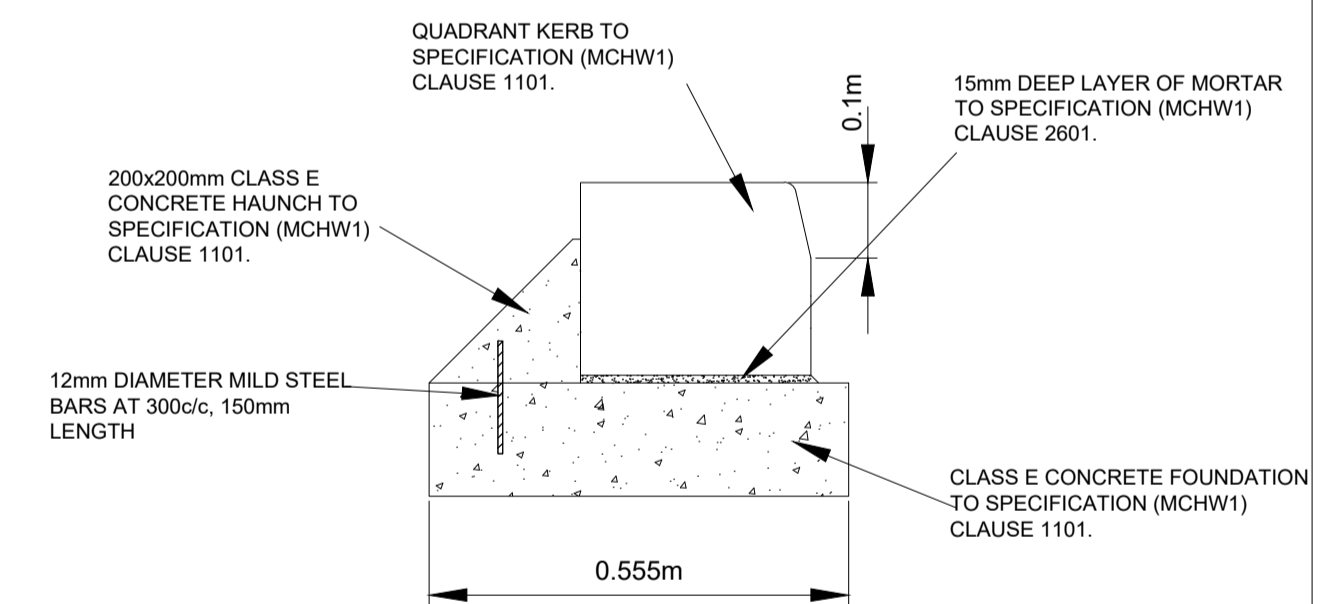
DETAIL 7: ROAD KERB BULLNOSE (1:10)



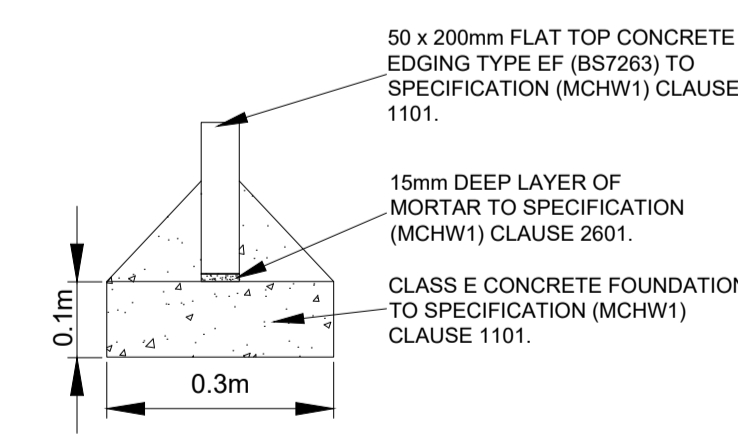
DETAIL 8: ROAD KERB HB2 (1:10)



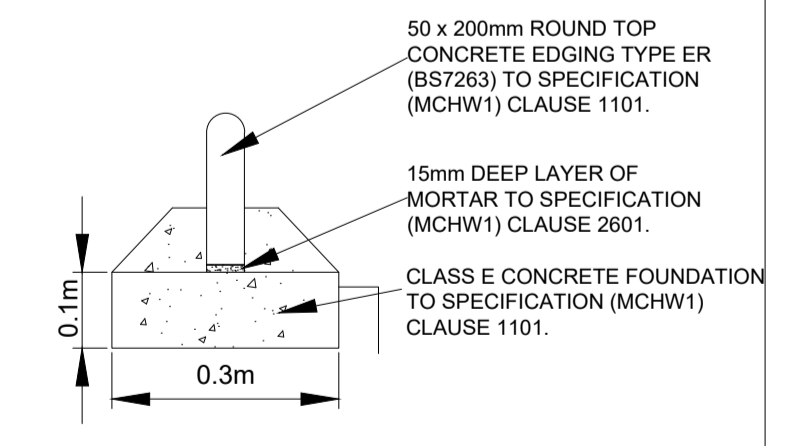
DETAIL 9: PC SQUARE CHANNEL (1:10)



DETAIL 10: QUADRANT KERB (1:10)



DETAIL 11: HEEL KERB EF (1:10)



DETAIL 12: HEEL KERB ER (1:10)

Date: 03.03.21	Revision: Updated as per Fife Council RCC comments.	No: A	Initials: BA	North Point:	Project: Halbeath
Date:	Revision:	No:	Initials:	Drawn: BA	Client: Shepherd Offshore (Scotland) Ltd
Date:	Revision:	No:	Initials:	Checked by: KZ	Date: 07.12.20
Date:	Revision:	No:	Initials:	Scale: As Noted	Title: Core Roads D & E Road Construction Details
Date:	Revision:	No:	Initials:	Original Size: A1	Copyright Acknowledgment: Ordnance Survey © Crown Copyright 2012. All rights reserved. Licence No. AL100017966.
				Quality Assurance: UKAS 905 Quality Assurance ISO 9001:2008 SGS Certificate GB02/54539	Drawing No: 8891/517
				Revision: A	

IronsideFarrar
Environmental Consultants
Environmental Planners
Civil Engineers
Landscape Architects
Graphic Design

111 McDonald Road EDINBURGH EH7 4NW
Tel: 0131 550 6500 Fax: 0131 557 6723
mail@ironsidefarrar.com

offices also in BELLSHILL & MANCHESTER