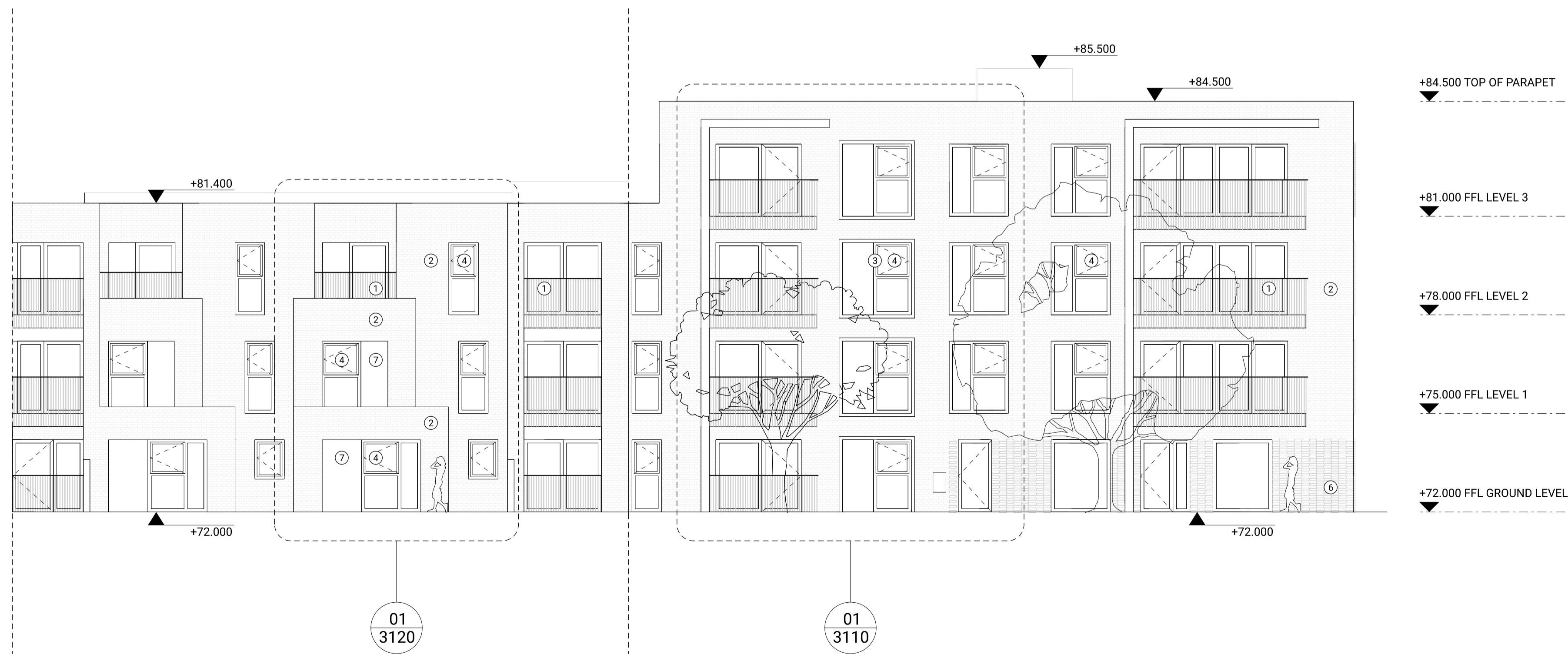




01
3041

NORTH BLOCK SOUTH ELEVATION

SCALE 1:100 (A1)



02
3041

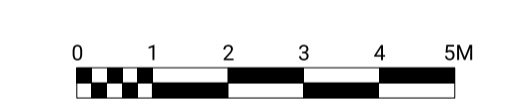
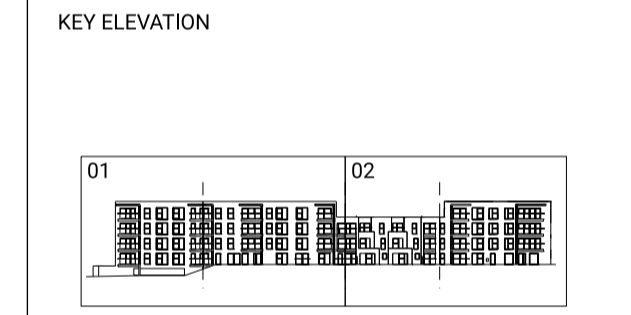
TOWNHOUSE WEST ELEVATION & SOUTH BLOCK NORTH ELEVATION

SCALE 1:100 (A1)

ISSUE	REVISION NOTE	DATE
P01	Planning Submission	19.03.2021

- GENERAL NOTES
- DO NOT SCALE DRAWINGS
 - ALL DIMENSIONS ARE IN MILLIMETERS UNLESS OTHERWISE STATED
 - ALL DIMENSIONS SHALL BE VERIFIED ON SITE BEFORE PROCEEDING WITH THE WORK
 - REPORT ANY DISCREPANCIES WITH CONTRACT DOCUMENTATION AND / OR CONSULTANTS' DRAWINGS

- LEGEND
- ① BRONZE-COLOURED METAL BALUSTRADE
 - ② RED/MULTI-COLOURED BRICKWORK
 - ③ BRONZE-COLOURED METAL ORIEL WINDOWS
 - ④ BRONZE-COLOURED DOUBLE-GLAZED INWARD OPENING ALUMINIUM FRAMED WINDOWS
 - ⑤ BRONZE-COLOURED METAL LOUVRES
 - ⑥ CORBELLED BRICK DETAIL
 - ⑦ BRONZE-COLOURED ANGLED METAL SIDE PANELS



SEVENOAKS GASHOLDER STATION

BLOCK COURTYARD ELEVATIONS (UNFOLDED)

DIRECTOR	MT	CHECKED	AG
DRAWN	JT	APPROVED	MT
PROJECT NO.	0330	FIRST ISSUE	19.03.2021
SCALE	1:200 @ A3 1:100 @ A1	REVISION	P01
DRAWING NO.	0330_3041		