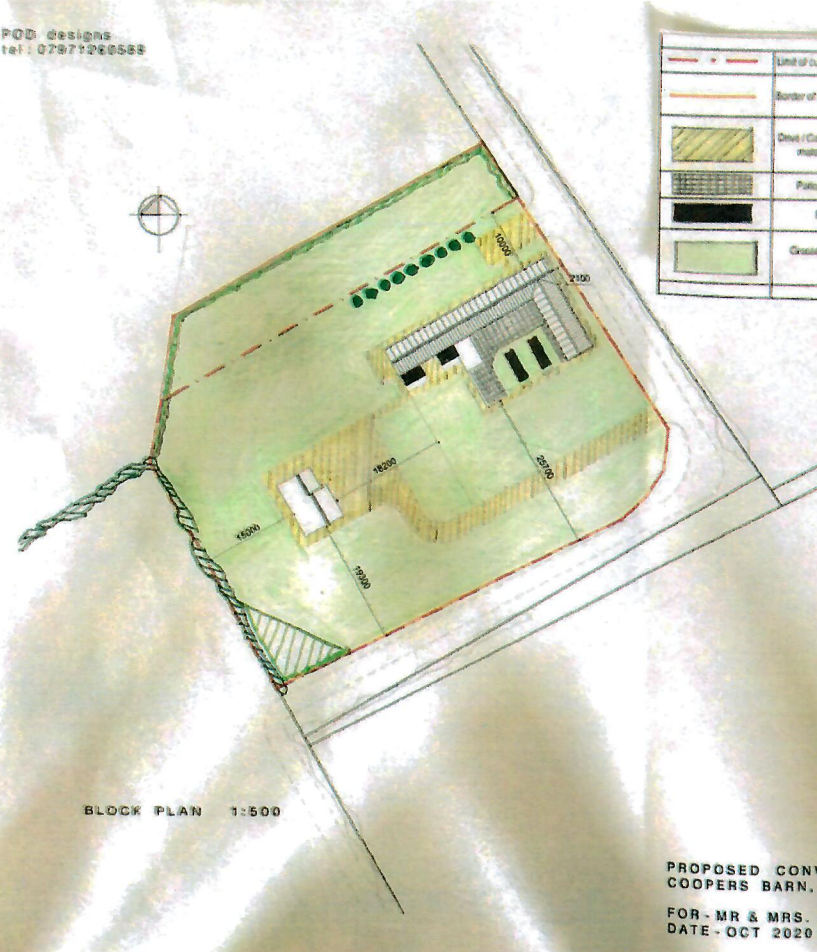
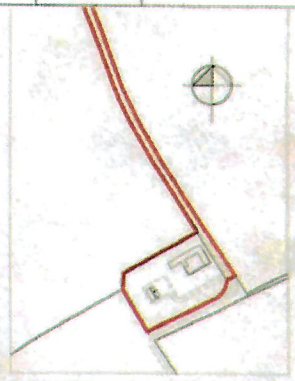


Condition 14

PDD designs
tel: 0797126555



Key		Existing native hedging
	Limit of curtilage of Coopers barn	Row planting of mixed native hedging. Planted as 4000 on bare root whip plants, till planted. Hedges to be planted Nov-Mar. Planting double staggered rows of 3-6 plants per m.
	Border of Property (to be formed)	Hedging Mix to contain: Hawthorn (Crataegus monogyna), Dogrose (Rosa canina), Field Maple (Acer campestre), Hazel (Corylus avellana), Bird Cherry (Prunus avium), Blackthorn (Prunus spinosa).
	Drive / Car parking areas. Porous material. 20mm gravel.	Area of woodland / Coppice. To contain: Hazel (Corylus avellana), Oak (Quercus robur), Silver Birch (Betula pendula).
	Paths. Sandstone pavers.	Mixed full trees - grown on dearing rootstocks.
	Flower Beds /	3 x Apple (Malus domestica) culture TBC. Grown on dearing rootstocks. 2 x Pear (Pyrus communis) culture TBC. Rowlock (Quercus G. / Quercus A. 2x Cherry (Prunus avium) culture TBC. 2x Plum (Prunus domestica) culture TBC.
	Grassed areas of lawn and paddock.	



© Crown Copyright. All rights reserved. Ordnance Survey, 10001998

LOCATION PLAN SCALE 1:2500

Site A - see Introduction, general site & highway context provided (Jan 2021)

PROPOSED CONVERSION OF BARN & CAR-PORT AT
COOPERS BARN, SCHOOL LANE, WALCOT, SLEAFORD, LINGS
FOR - MR & MRS. A. RUSSELL
DATE - OCT 2020 SCALE - 1:100 DRAWN - rpm DWG.NO. DWG.NO.20-009-08a