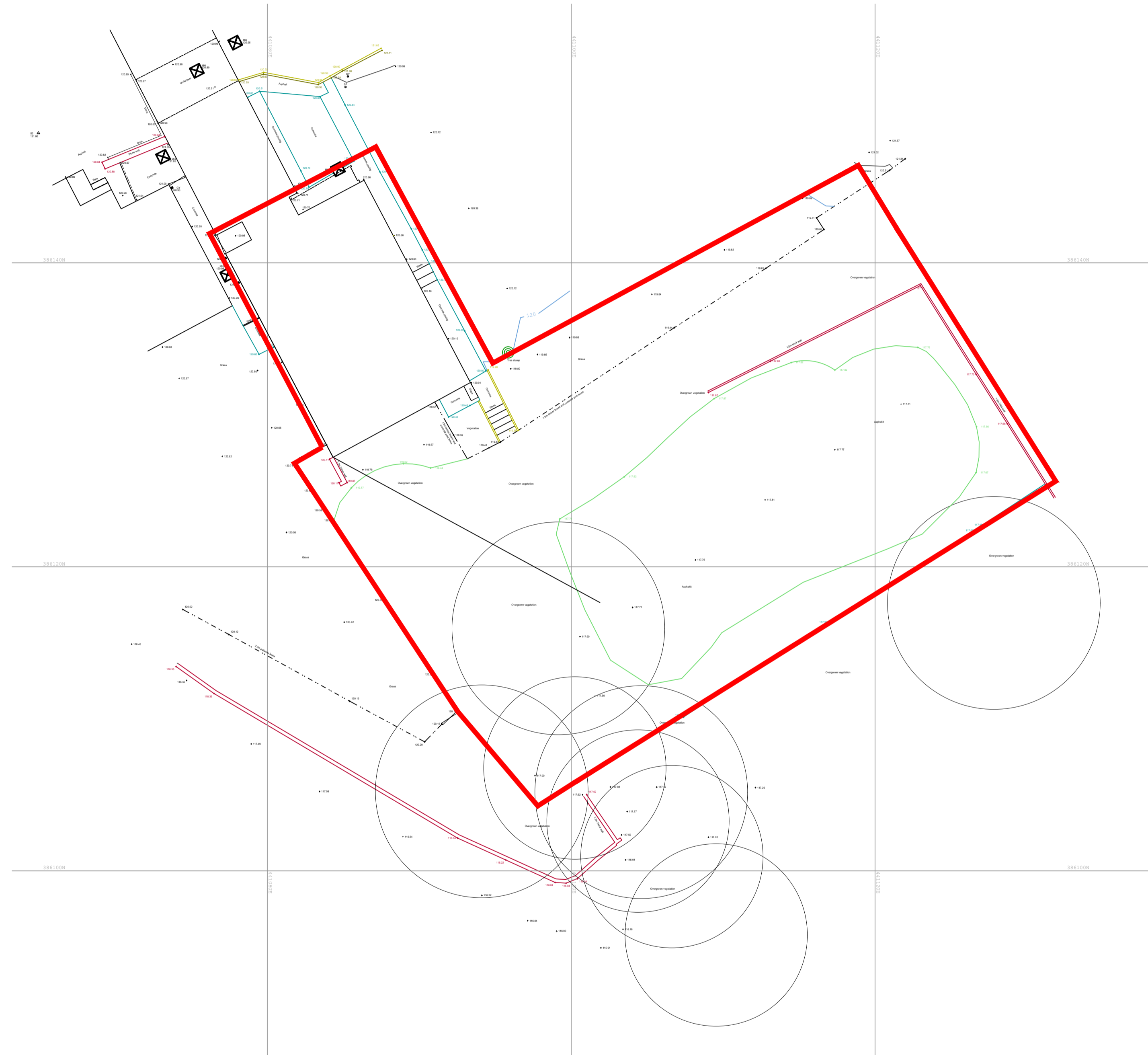


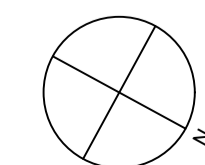
Site location plan Scale 1:1250 @ A1



Block plan Scale 1:500 @ A1



Site / topographical plan Scale 1:200 @ A1



Office 9
Lydgate House
Lydgate Lane
Sheffield, S10 5FH

0114 267 6344
info@jumparchitects.com
www.jumparchitects.com

Rev A AB 28-02-21 Site boundaries indicated

Project J20-025 St Mary's Church Hall - Handsworth			
Title Site and location plans as existing			
Date 05-09-20	Scale 1:1250, 1:500, 1:200	Dwg No A-101	Rev A
Drawn	Checked		

Copyright of this drawing is with JUMP Architects Ltd. Do not scale from this drawing. All dimensions are to be verified prior to construction, any discrepancies on this drawing are to be reported to JUMP Architects Ltd.