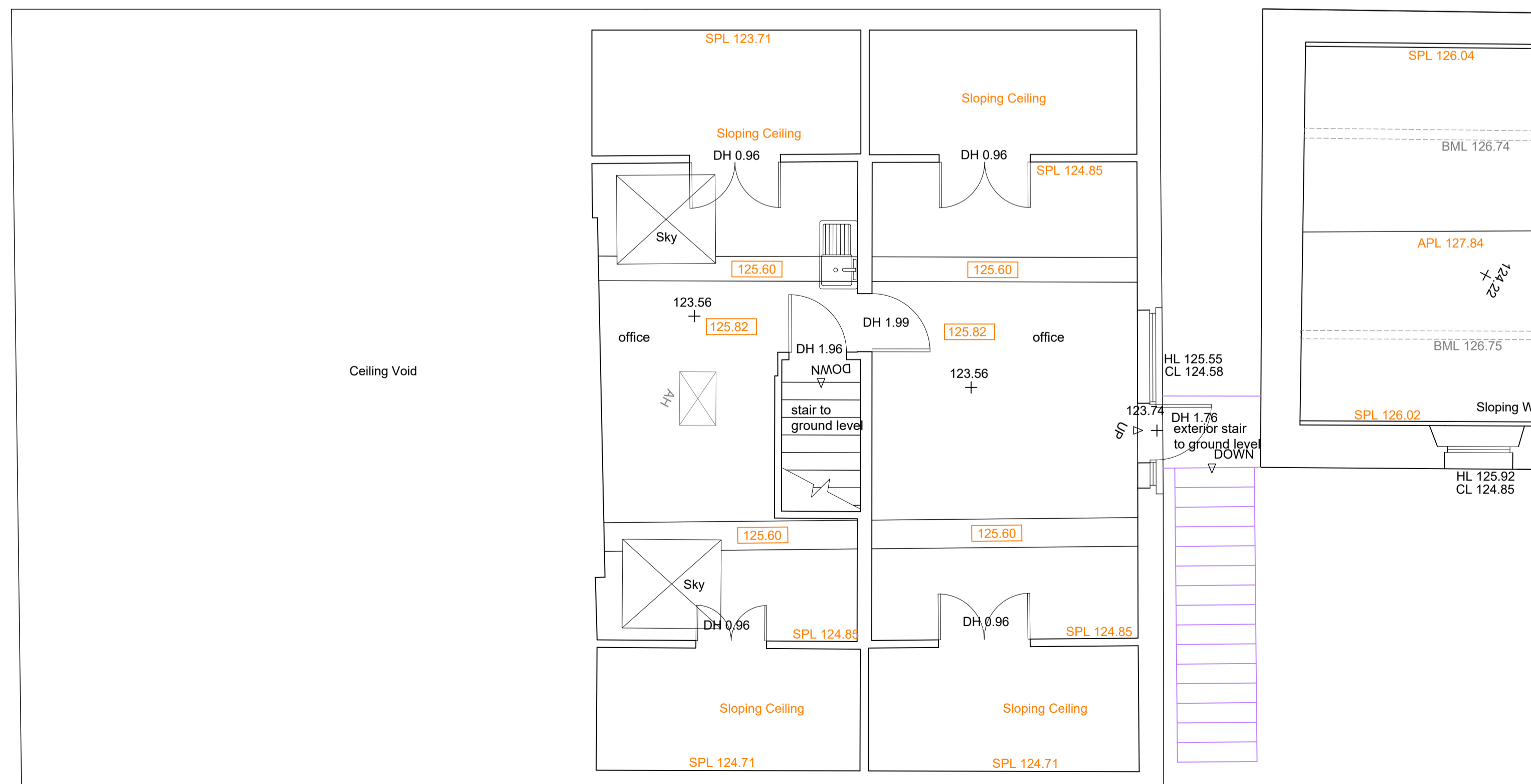
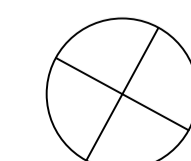


Ground floor plan Scale 1:50 @ A1



First floor plan Scale 1:50 @ A1



JUMP
ARCHITECTS

Office 9
Lydgate House
Lydgate Lane
Sheffield, S10 5FH

0114 267 6344
info@jumparchitects.com
www.jumparchitects.com

Rev B AB 22-03-21 General update to planning application
Rev A AB 17-11-20 Museum room added

Project J20-025 St Mary's Church Hall - Handsworth			
Title Existing floor plans			
Date 05-09-20	Scale 1:50 @ A1	Dwg No	Rev
Drawn --	Checked --	A-102	B

Copyright of this drawing is with JUMP Architects Ltd. Do not scale from this drawing. All dimensions are to be verified prior to construction, any discrepancies on this drawing are to be reported to JUMP Architects Ltd.