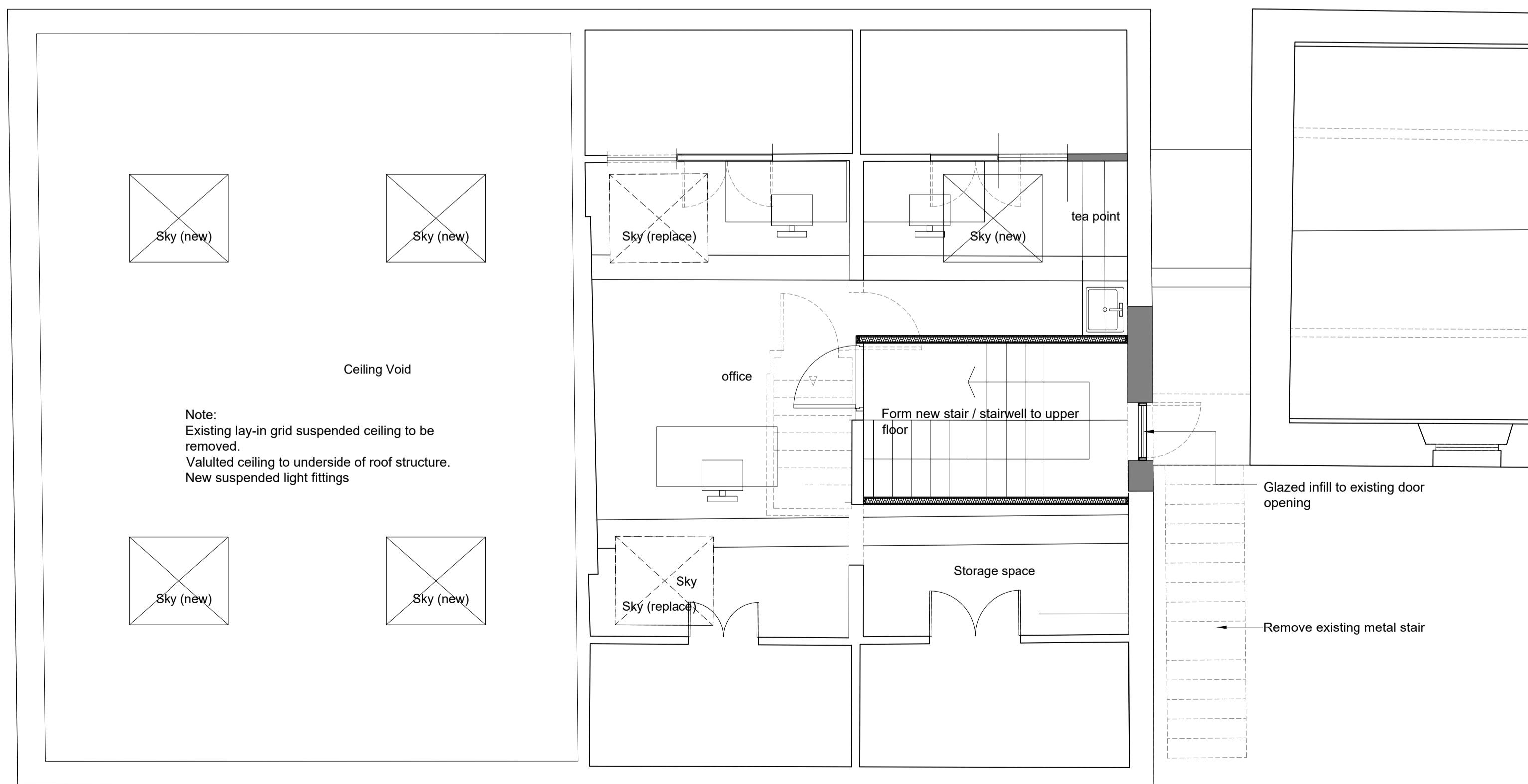


Ground floor plan Scale 1:50 @ A1

All windows to be replaced with aluminium framed double glazed windows with opening lights / trickle vents. Additional alterations to openings as noted



First floor plan Scale 1:50 @ A1

Rev E AB 22-03-21 General updates to planning application.  
 Rev D AB 17-11-20 annotation added  
 Rev C AB 13-11-20 internal stair added  
 Rev B AB 28-10-20 exterior stair amended  
 Rev A AB 21-10-20 General update

Office 9  
 Lydgate House  
 Lydgate Lane  
 Sheffield, S10 5FH

**JUMP**  
 ARCHITECTS

0114 267 6344  
 info@jumparchitects.com  
 www.jumparchitects.com

Project			
St Mary's Church Hall, Handsworth Rd, Handsworth, Sheffield S13 9BZ			
Title			
Proposed Floor Plans			
Date	Scale	Dwg No	Rev
15-10-20	1:50 @ A1	J20-025 A-112	E
Drawn	Checked		

Copyright of this drawing is with JUMP Architects Ltd. Do not scale from this drawing. All dimensions are to be verified prior to construction, any discrepancies on this drawing are to be reported to JUMP Architects Ltd.