

East Elevation

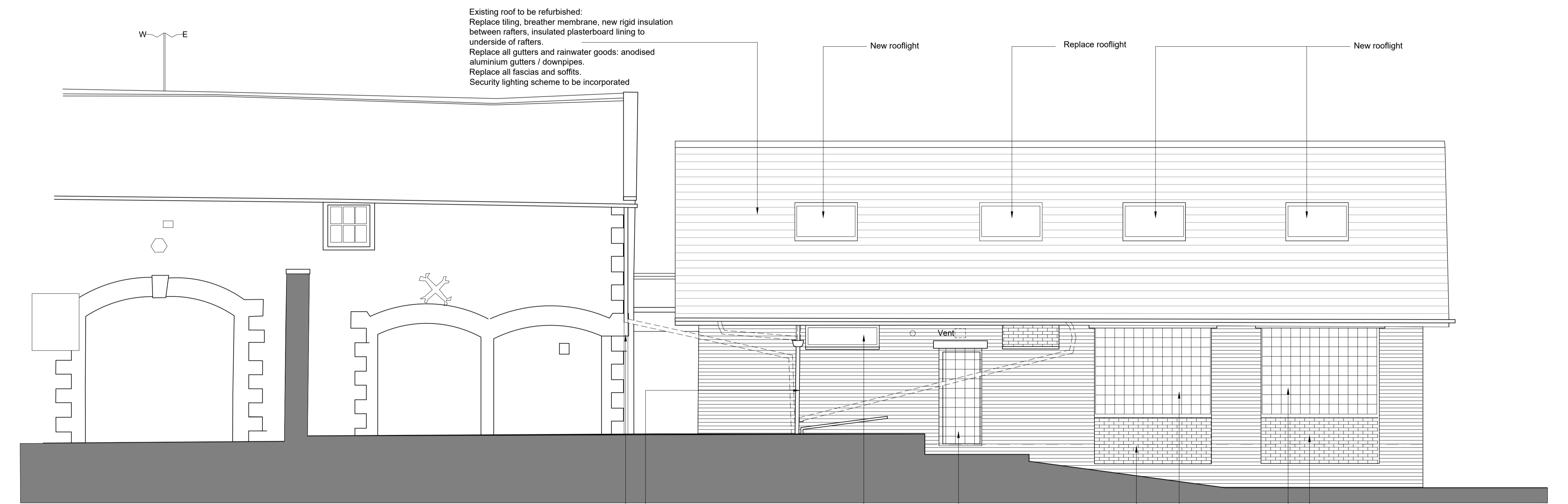
Existing roof to be refurbished:
 Replace tiling, breather membrane, new rigid insulation
 between rafters, insulated plasterboard lining to
 underside of rafters.
 Replace all gutters and rainwater goods: anodised
 aluminium gutters / downpipes.
 Replace all fascias and soffits.
 Security lighting scheme to be incorporated

Replace rooflight

New rooflight

New timber door and frame with fan
 lights over to match existing

New double glazed aluminium framed
 windows.
 Raised brick cills to suit revised floor
 levels
 New double glazed aluminium framed
 door.
 Matching brick infill to existing
 openings



West Elevation

Existing roof to be refurbished:
 Replace tiling, breather membrane, new rigid insulation
 between rafters, insulated plasterboard lining to
 underside of rafters.
 Replace all gutters and rainwater goods: anodised
 aluminium gutters / downpipes.
 Replace all fascias and soffits.
 Security lighting scheme to be incorporated

New rooflight

Replace rooflight

New rooflight

Rainwater goods replaced to new runs
 below ground to connect to existing
 system

New double glazed aluminium framed
 windows.

New double glazed aluminium framed
 door.

Matching brick infill to existing
 openings

Two windows to be removed
 and openings infilled with
 glass block units

Matching brick infill to existing
 openings

JUMP
 ARCHITECTS

Office 9
 Lydgate House
 Lydgate Lane
 Sheffield, S10 5FH

0114 267 6344
 info@jumparchitects.com
 www.jumparchitects.com

129.00m
 128.00m
 127.00m
 126.00m
 125.00m
 124.00m
 123.00m
 122.00m
 121.00m
 120.00m

Rev C AB 17-11-20 General update. Re-numbered
 Rev B AB 28-10-20 exterior stair amended
 Rev A AB 21-10-20 General update

Project			
St Mary's Church Hall, Handsworth Rd, Handsworth, Sheffield S13 9BZ			
Title			
Proposed Elevations			
Date	Scale	Dwg No	Rev
15-10-20	1:50 @ A1	J20-025 A-210	C
Drawn	Checked		

Copyright of this drawing is with JUMP Architects Ltd. Do not scale from this drawing. All dimensions are to be verified prior to construction, any discrepancies on this drawing are to be reported to JUMP Architects Ltd.