

- 2no. layers of 18mm plywood
- CART LODGE RIDGE + 6.340
- For additional ridge detail, see PO provided Rheinzink detail pack.
- Any voids insitu foam filled
- 6°
- Vapozink structured underlay
- Typical roof detail (0.18W/m2K target U-Value). Rheinzink non-ventilated warm roof on structured underlay and Linitherm OSB PAL System.
- Timber battens over ply deck to form falls
- Dropped ceiling to allow fitting of pendant lights.
- SECTION THROUGH RIDGE
2
- Typical roof detail (0.18W/m2K target U-Value). Rheinzink non-ventilated warm roof on structured underlay and Linitherm OSB PAL System:
- Rheinzink Double Standing seam zinc roofing system. Finish in artColour skygrey.
 - Vapozink structured underlay.
 - 102mm Prefabricated Linitherm OSB backed insulation board. 22mm board on 80mm insulation
 - Vapour barrier
 - 18mm plywood deck
 - Timber rafters to SE detail.
 - 60mm Rockwool below rafters between 60x50mm softwood timber battens.
 - 12.5mm Gyproc Wallboard (or similar approved)
 - 3mm skim finish plaster
- Seam to terminate below window cill. Damp Proof membrane to wrap up 50mm insulation and over window cill structure.
- Vapour Control Layer
- 150x50mm timber frame below window, with 100mm insulation between joists. 50mm services zone in front. Gyproc Wallboard to walls.
- Typical roof detail (0.18W/m2K target U-Value). Rheinzink non-ventilated warm roof on structured underlay and Linitherm OSB PAL System:
- Rheinzink Double Standing seam zinc roofing system. Finish in artColour skygrey.
 - Vapozink structured underlay.
 - 102mm Prefabricated Linitherm OSB backed insulation board. 22mm board on 80mm insulation
 - Vapour barrier
 - 18mm plywood deck
 - Timber rafters to SE detail
 - MR ply to continue to edge of rafter projecting to roof edge.
- Wall VCL to overlap soffit VCL. Tapped and jointed.
- 10mm shadow gap at base. British Gypsum Styletrim BGM105 trim
- Cart lodge soffit (0.21W/m2K target U-value):
- 20mm finishes zone. Carpet on underlay
 - 18mm T&G plywood deck
 - Vapour Control Layer
 - 180mm Rockwool Flexi insulation between
 - 250x75mm timber joists to SE detail.
 - 12.5mm Gyproc FireLine plasterboard
 - 12.5mm Gyproc MR board
 - 3mm skim finish
- all to achieve 30min. fire resistance.

NOTES:

Review details with Project Orange plans, sections and elevations.

Review all structural items alongside Richard Jackson Engineering drawings and schedules.

Date	Rev.	Revision

project orange

1st Floor, Cosmopolitan House
 10A Christina Street, London, EC2A 4PA
 T: +44 (0)20 7739 9333 F: +44 (0)20 7739 0103
 www.projectorange.com

Dwg No. 1002

Project: SHELLY PRIORY BARN

Drawing: SECTION DETAILS 02
 CART LODGE

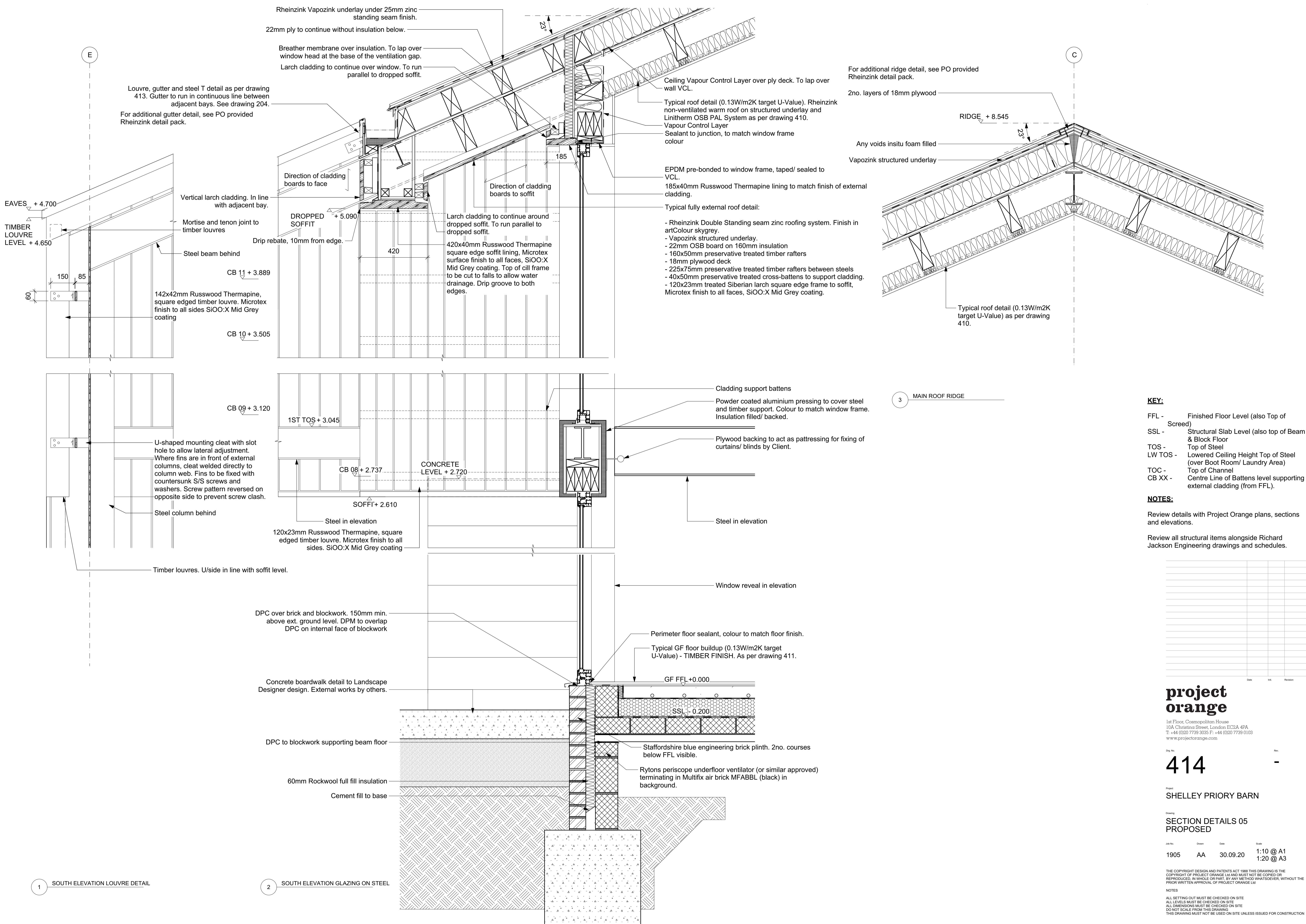
Job No.	Drawn	Date	Scale
1905	AA	30.09.20	1:10 @ A1 1:20 @ A3

THE COPYRIGHT DESIGN AND PATENTS ACT 1988 THIS DRAWING IS THE COPYRIGHT OF PROJECT ORANGE LTD AND MUST NOT BE COPIED OR REPRODUCED IN WHOLE OR PART BY ANY METHOD WHATSOEVER WITHOUT THE PRIOR WRITTEN APPROVAL OF PROJECT ORANGE LTD

NOTES

ALL SETTING OUT MUST BE CHECKED ON SITE
 ALL LEVELS MUST BE CHECKED ON SITE
 ALL DIMENSIONS MUST BE CHECKED ON SITE
 DO NOT SCALE FROM THIS DRAWING
 THIS DRAWING MUST NOT BE USED ON SITE UNLESS ISSUED FOR CONSTRUCTION

1 SOFFIT AND DORMER



Louvre, gutter and steel T detail as per drawing 413. Gutter to run in continuous line between adjacent bays. See drawing 204.
 For additional gutter detail, see PO provided Rheinzink detail pack.

EAVES + 4.700
 TIMBER LOUVRE LEVEL + 4.650
 60
 150
 85
 Vertical larch cladding. In line with adjacent bay.
 Mortise and tenon joint to timber louvres
 Steel beam behind
 CB 11 + 3.889
 142x42mm Russwood Thermatine, square edged timber louvre. Microtex finish to all sides. SiOO:X Mid Grey coating
 CB 10 + 3.505

U-shaped mounting cleat with slot hole to allow lateral adjustment. Where fins are in front of external columns, cleat welded directly to column web. Fins to be fixed with countersunk S/S screws and washers. Screw pattern reversed on opposite side to prevent screw clash.
 Steel column behind
 Timber louvres. U/side in line with soffit level.

DPC over brick and blockwork. 150mm min. above ext. ground level. DPM to overlap DPC on internal face of blockwork

Concrete boardwalk detail to Landscape Designer design. External works by others.

DPC to blockwork supporting beam floor
 60mm Rockwool full fill insulation
 Cement fill to base

Direction of cladding boards to face
 DROPPED SOFFIT + 5.090
 Drip rebate, 10mm from edge.
 420
 Larch cladding to continue around dropped soffit. To run parallel to dropped soffit.
 420x40mm Russwood Thermatine square edge soffit lining, Microtex surface finish to all faces, SiOO:X Mid Grey coating. Top of cill frame to be cut to falls to allow water drainage. Drip groove to both edges.

1ST TOS + 3.045
 CB 09 + 3.120
 CB 09 + 2.737
 CONCRETE LEVEL + 2.720
 SOFFT + 2.610
 Steel in elevation
 120x23mm Russwood Thermatine, square edged timber louvre. Microtex finish to all sides. SiOO:X Mid Grey coating

Cladding support battens
 Powder coated aluminium pressing to cover steel and timber support. Colour to match window frame. Insulation filled/backed.
 Plywood backing to act as pattingress for fixing of curtains/ blinds by Client.

Perimeter floor sealant, colour to match floor finish.
 Typical GF floor buildup (0.13W/m2K target U-Value) - TIMBER FINISH. As per drawing 411.

GF FFL + 0.000
 SSL - 0.200

Staffordshire blue engineering brick plinth. 2no. courses below FFL visible.
 Ryttons periscope underfloor ventilator (or similar approved) terminating in Multifix air brick MFABB (black) in background.

Rheinzink Vapozink underlay under 25mm zinc standing seam finish.
 22mm ply to continue without insulation below.
 Breather membrane over insulation. To lap over window head at the base of the ventilation gap.
 Larch cladding to continue over window. To run parallel to dropped soffit.

CEILING Vapour Control Layer over ply deck. To lap over wall VCL.
 Typical roof detail (0.13W/m2K target U-Value). Rheinzink non-ventilated warm roof on structured underlay and Linitherm OSB PAL System as per drawing 410.
 Vapour Control Layer
 Sealant to junction, to match window frame colour

EPDM pre-bonded to window frame, taped/ sealed to VCL.
 185x40mm Russwood Thermatine lining to match finish of external cladding.
 Typical fully external roof detail:
 - Rheinzink Double Standing seam zinc roofing system. Finish in artColour skygrey.
 - Vapozink structured underlay.
 - 22mm OSB board on 160mm insulation
 - 160x50mm preservative treated timber rafters
 - 18mm plywood deck
 - 225x75mm preservative treated timber rafters between steels
 - 40x50mm preservative treated cross-battens to support cladding.
 - 120x23mm treated Siberian larch square edge frame to soffit, Microtex finish to all faces, SiOO:X Mid Grey coating.

For additional ridge detail, see PO provided Rheinzink detail pack.

2no. layers of 18mm plywood
 RIDGE + 8.545
 Any voids insitu foam filled
 Vapozink structured underlay

Typical roof detail (0.13W/m2K target U-Value) as per drawing 410.

3 MAIN ROOF RIDGE

- KEY:**
- FFL - Finished Floor Level (also Top of Screenshot)
 - SSL - Structural Slab Level (also top of Beam & Block Floor)
 - TOS - Top of Steel
 - LW TOS - Lowered Ceiling Height Top of Steel (over Boot Room/ Laundry Area)
 - TOC - Top of Channel
 - CB XX - Centre Line of Battens level supporting external cladding (from FFL).

NOTES:

Review details with Project Orange plans, sections and elevations.

Review all structural items alongside Richard Jackson Engineering drawings and schedules.

Date	By	Revision

project orange
 1st Floor, Cosmopolitan House
 10A Christina Street, London, EC2A 4PA
 T: +44 (0)20 7739 3333 F: +44 (0)20 7739 0103
 www.projectorange.com

Dwg No. **414** Rev. -

Project **SHELLEY PRIORY BARN**

Drawing **SECTION DETAILS 05 PROPOSED**

Job No. 1905 Drawn AA Date 30.09.20 Scale 1:10 @ A1, 1:20 @ A3

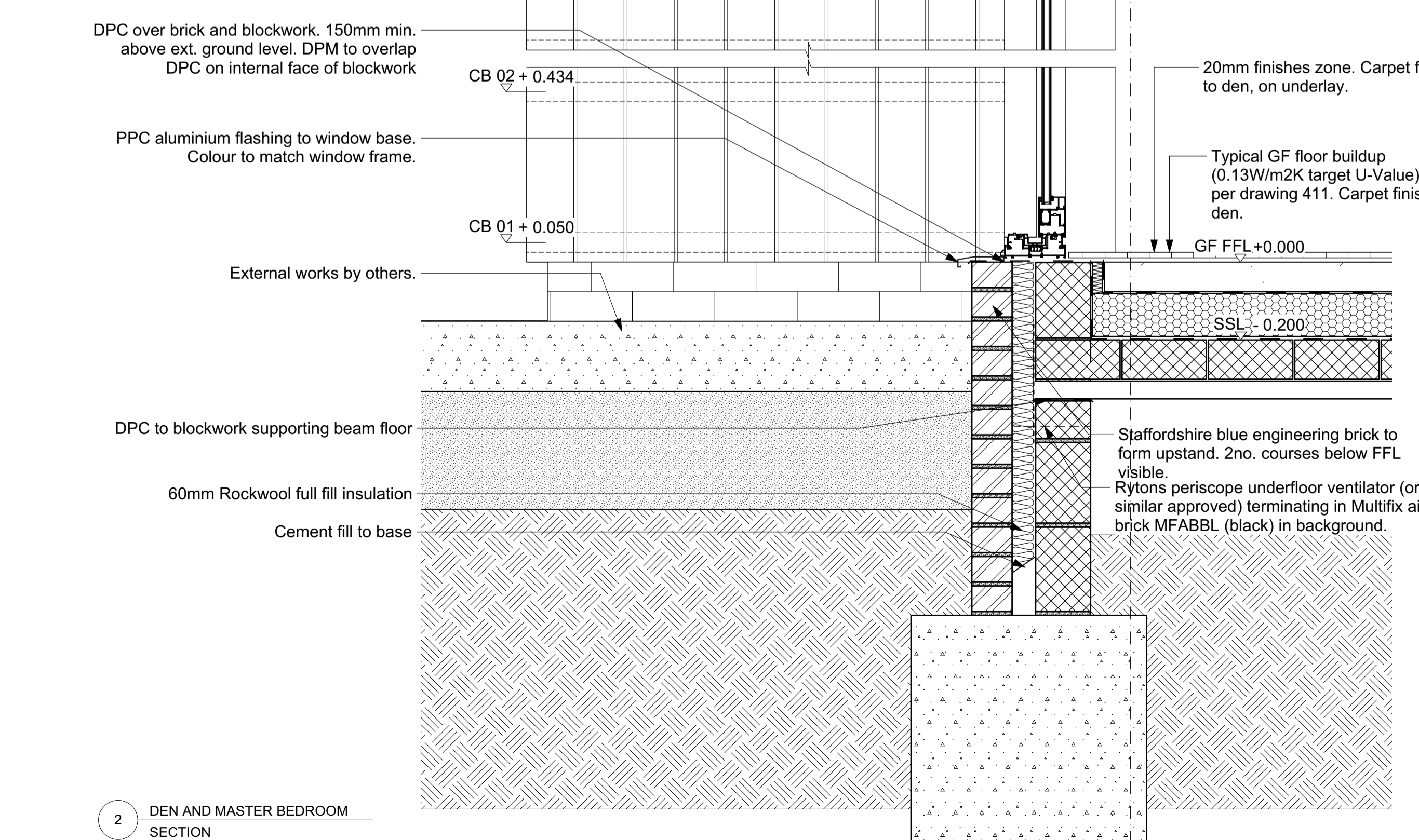
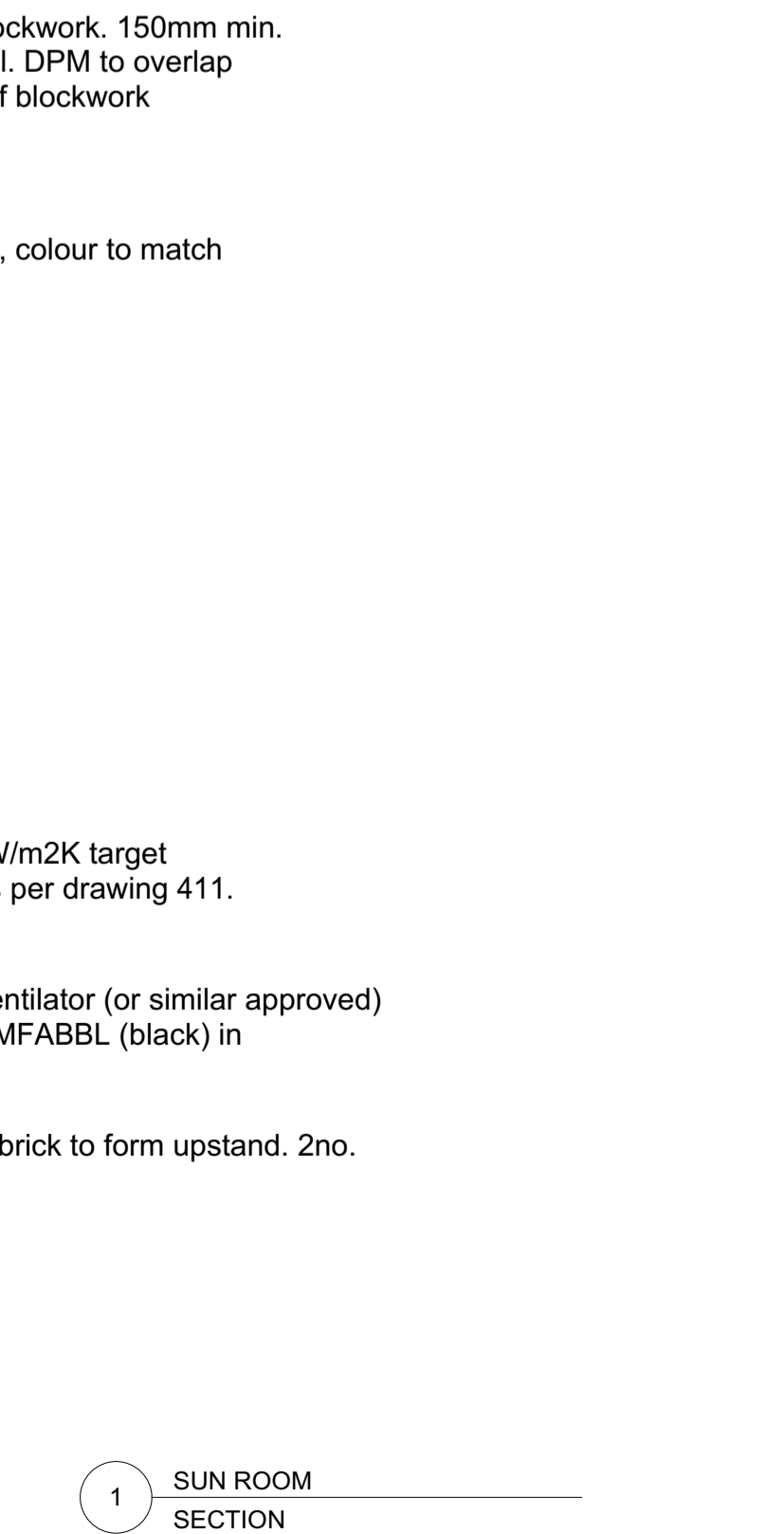
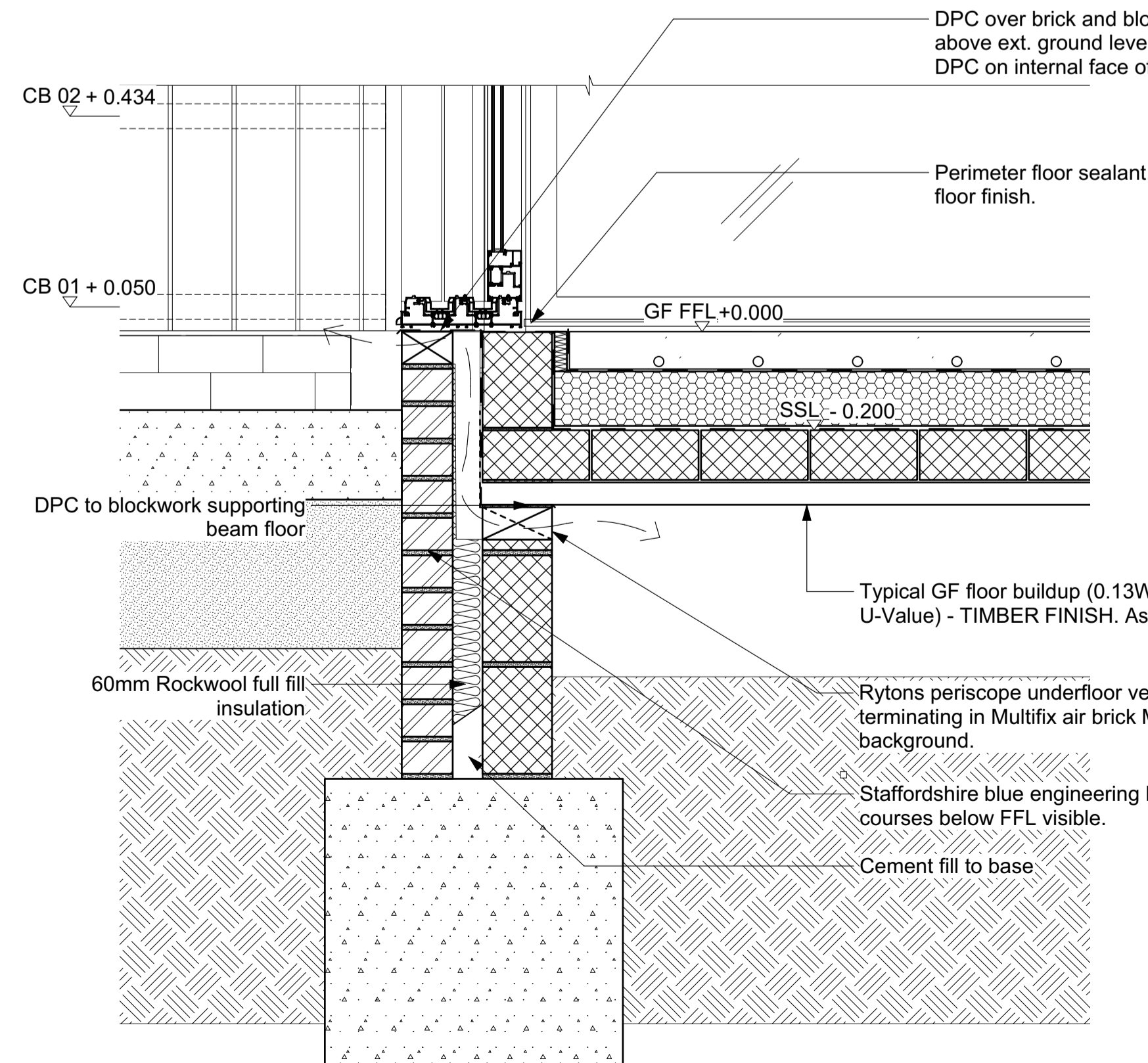
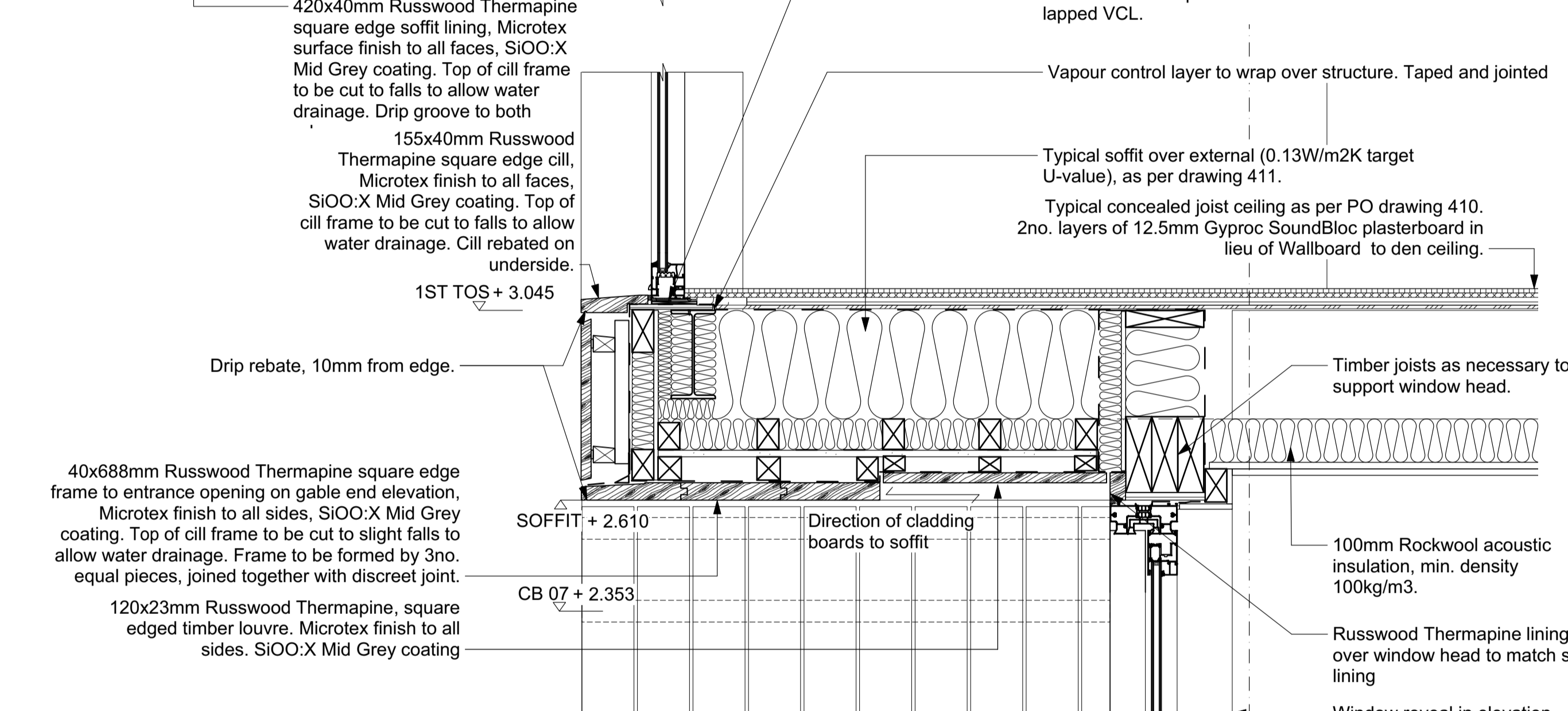
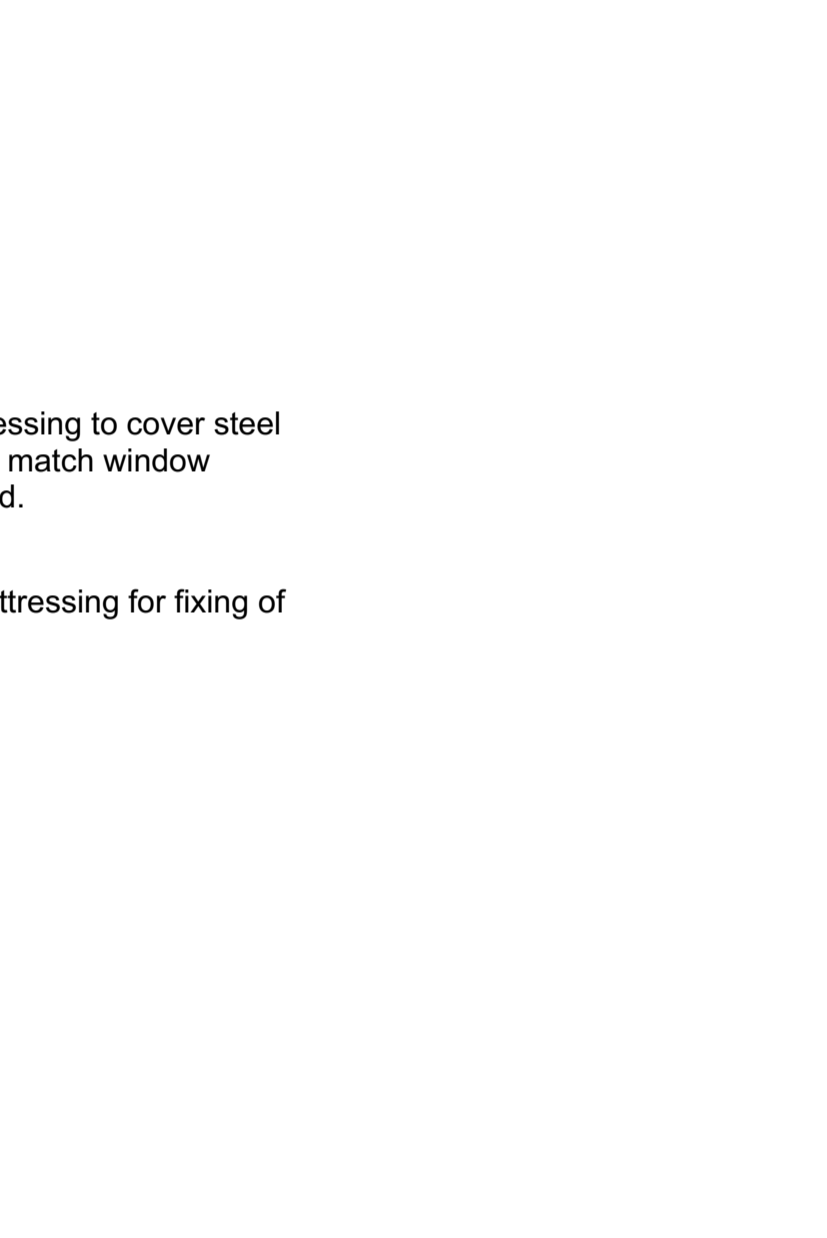
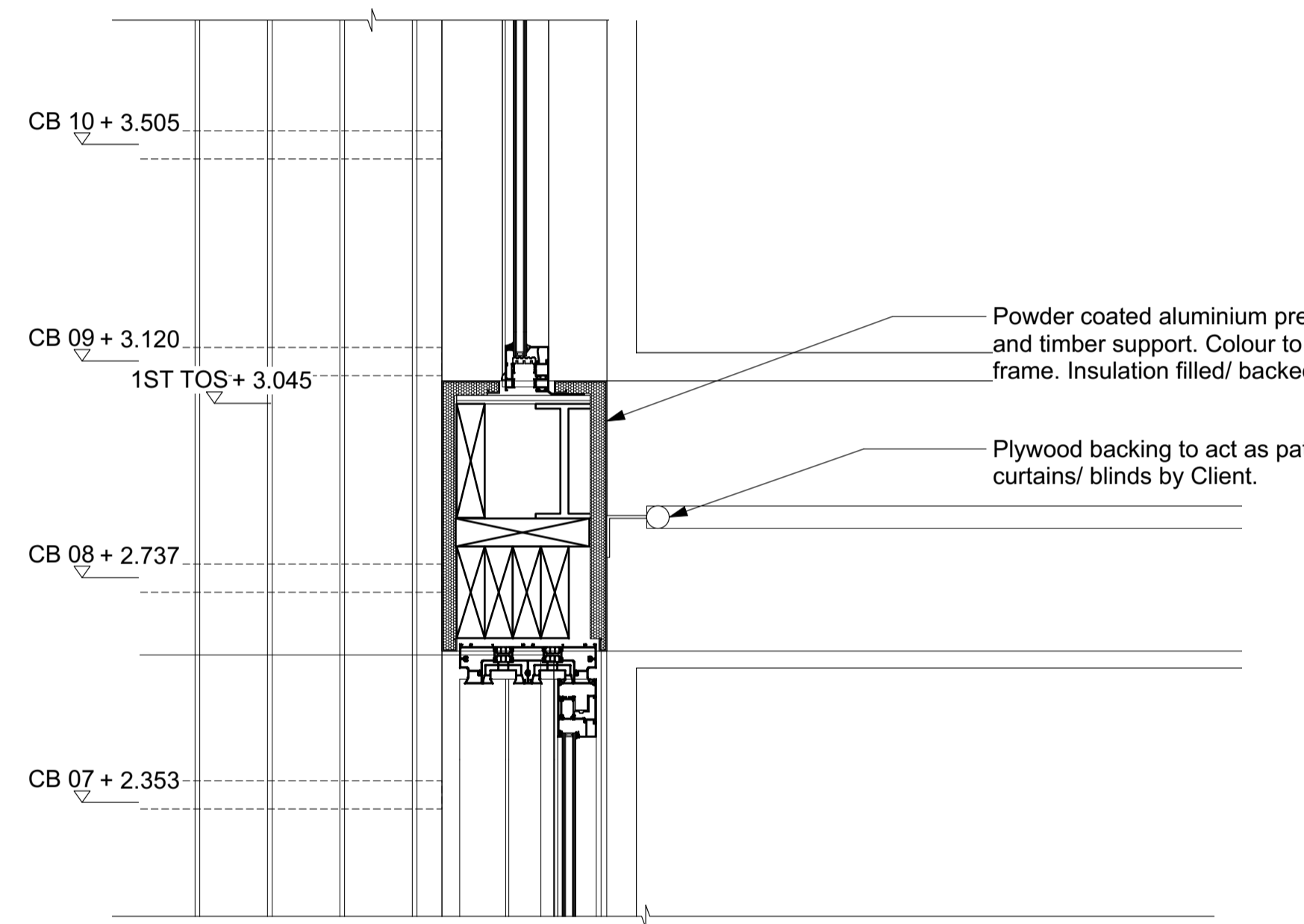
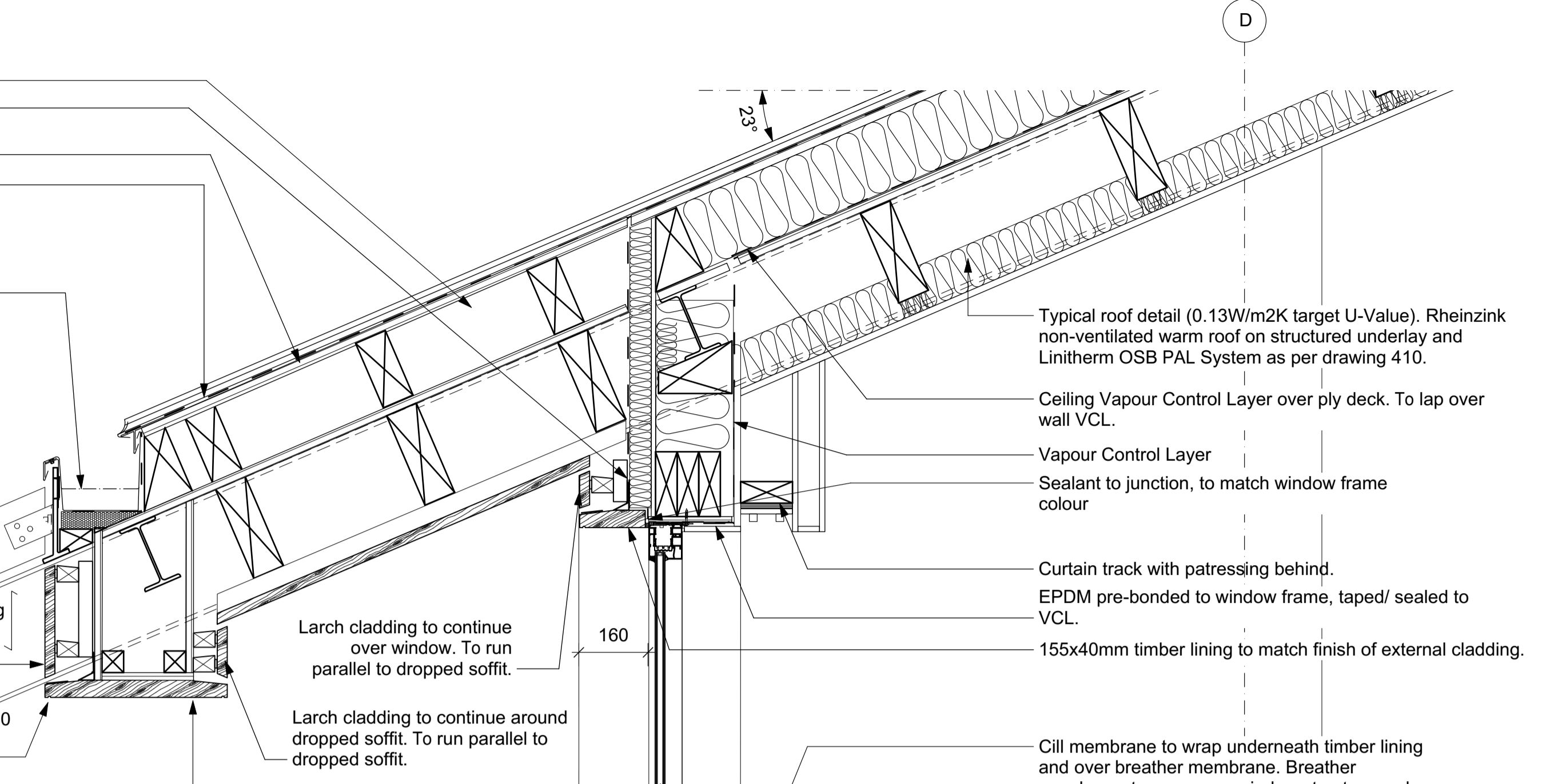
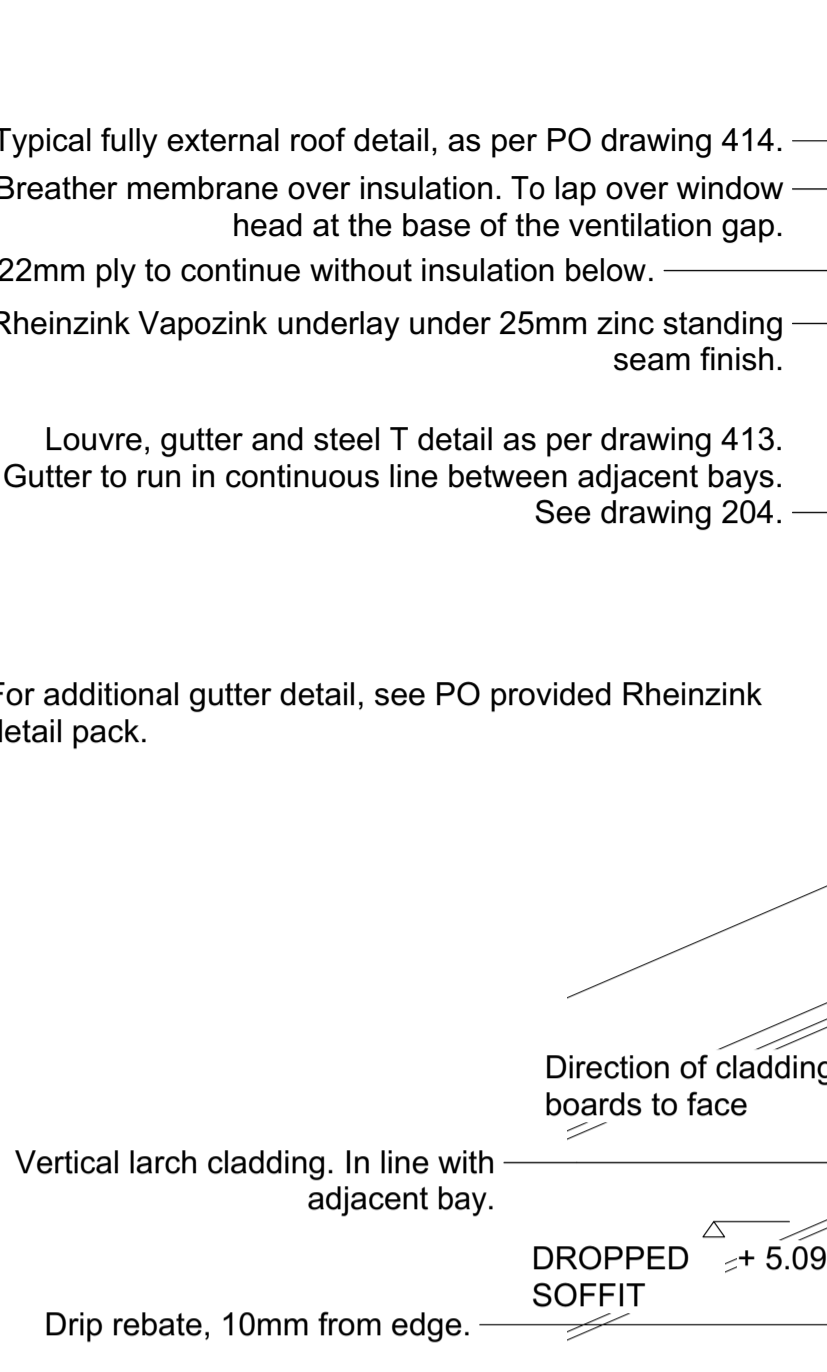
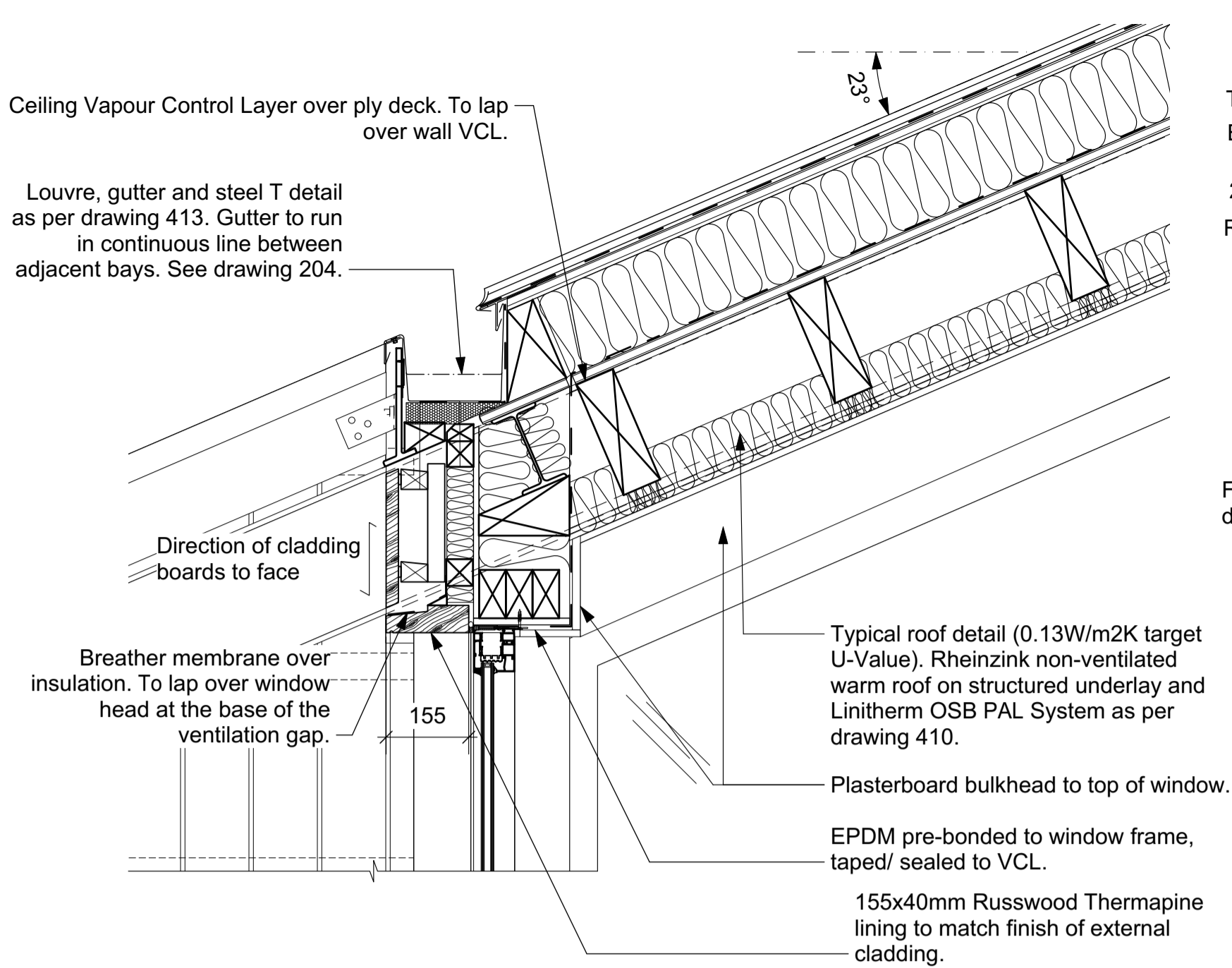
THE COPYRIGHT DESIGN AND PATENTS ACT 1988 THIS DRAWING IS THE COPYRIGHT OF PROJECT ORANGE LTD AND MUST NOT BE COPIED OR REPRODUCED, IN WHOLE OR PART, BY ANY METHOD WHATSOEVER, WITHOUT THE PRIOR WRITTEN APPROVAL OF PROJECT ORANGE LTD

NOTES

ALL SETTING OUT MUST BE CHECKED ON SITE
 ALL LEVELS MUST BE CHECKED ON SITE
 ALL DIMENSIONS MUST BE CHECKED ON SITE
 DO NOT SCALE FROM THIS DRAWING
 THIS DRAWING MUST NOT BE USED ON SITE UNLESS ISSUED FOR CONSTRUCTION

1 SOUTH ELEVATION LOUVRE DETAIL

2 SOUTH ELEVATION GLAZING ON STEEL



- KEY:**
- FFL - Finished Floor Level (also Top of Scream)
 - SSL - Structural Slab Level (also top of Beam & Block Floor)
 - TOS - Top of Steel
 - LW TOS - Lowered Ceiling Height Top of Steel (over Boot Room/ Laundry Area)
 - TOC - Top of Channel
 - CB XX - Centre Line of Battens level supporting external cladding (from FFL).

NOTES:

Review details with Project Orange plans, sections and elevations.

Review all structural items alongside Richard Jackson Engineering drawings and schedules.

project orange

1st Floor, Cosmopolitan House
10A Christina Street, London, EC2A 4PA
T: +44 (0)20 7739 9255 F: +44 (0)20 7739 0103
www.projectorange.com

415

SHELLEY PRIORY BARN

SECTION DETAILS 06 PROPOSED

Job No. 1905
Drawn AA
Date 30.09.20
Scale 1:10 @ A1
1:20 @ A3

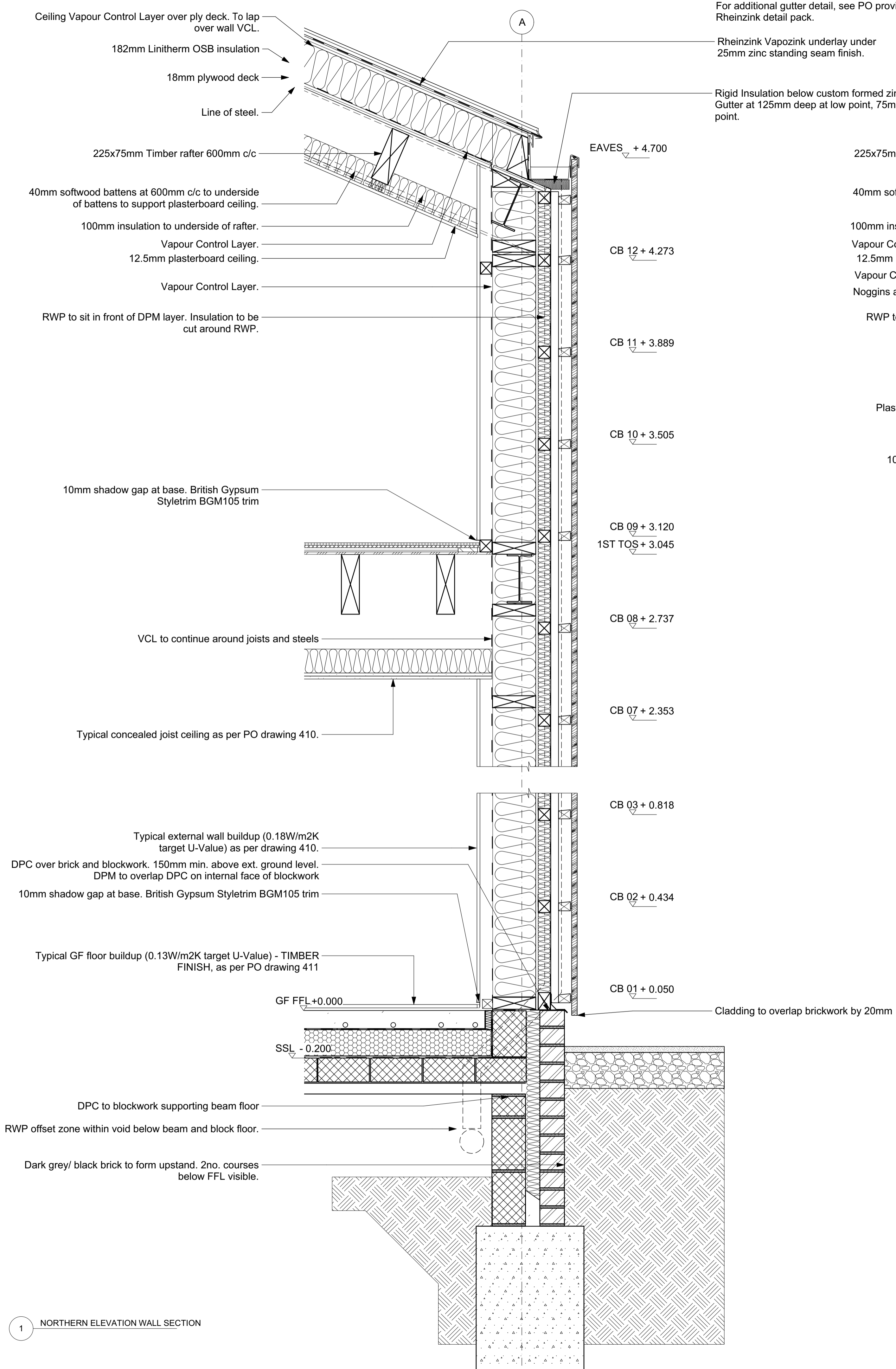
THE COPYRIGHT DESIGN AND PATENTS ACT 1988 THIS DRAWING IS THE COPYRIGHT OF PROJECT ORANGE Ltd AND MUST NOT BE COPIED OR REPRODUCED, IN WHOLE OR PART, BY ANY METHOD WHATSOEVER, WITHOUT THE PRIOR WRITTEN APPROVAL OF PROJECT ORANGE Ltd

NOTES

ALL SETTING OUT MUST BE CHECKED ON SITE
ALL LEVELS MUST BE CHECKED ON SITE
ALL DIMENSIONS MUST BE CHECKED ON SITE
DO NOT SCALE FROM THIS DRAWING
THIS DRAWING MUST NOT BE USED ON SITE UNLESS ISSUED FOR CONSTRUCTION

1 SUN ROOM SECTION

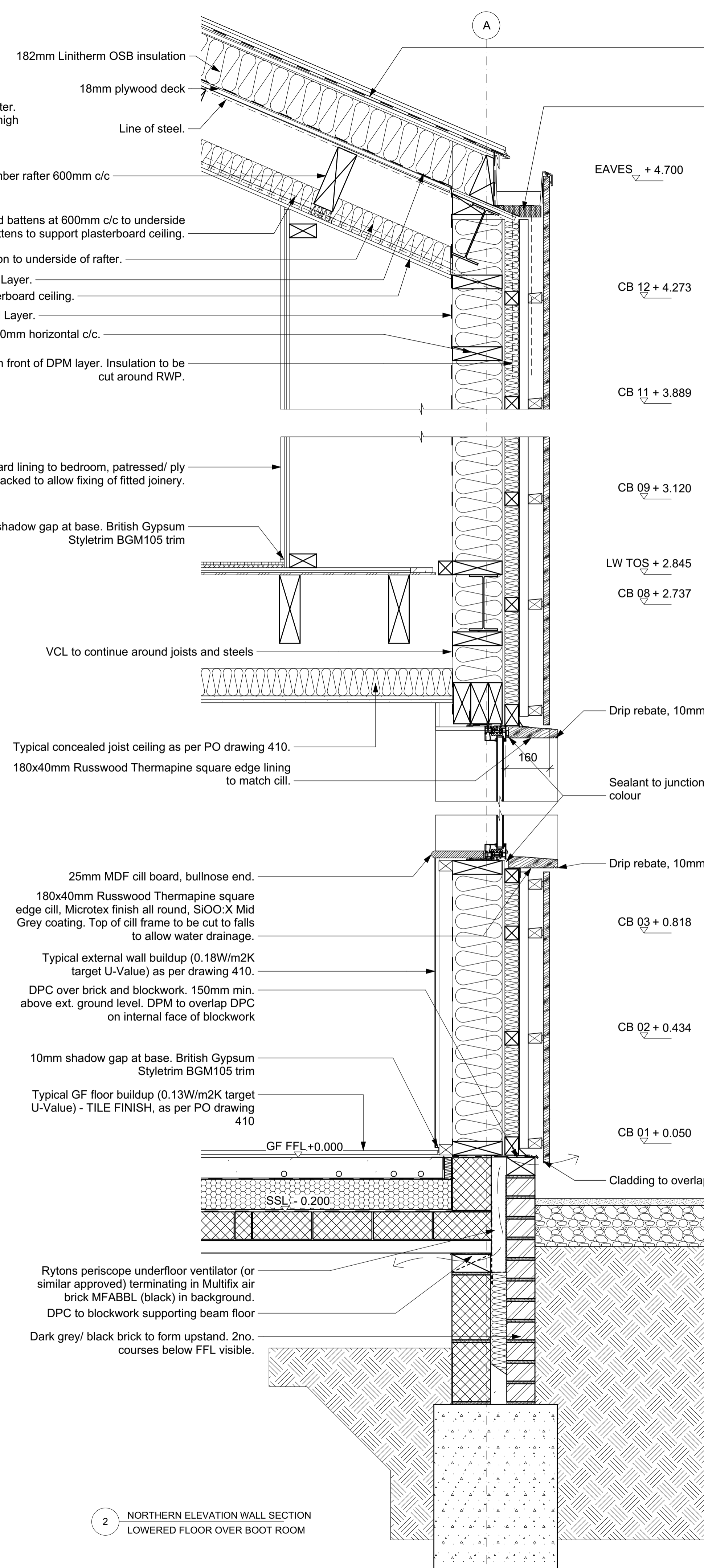
2 DEN AND MASTER BEDROOM SECTION



For additional gutter detail, see PO provided Rheinzink detail pack.

Rheinzink Vapozink underlay under 25mm zinc standing seam finish.

Rigid Insulation below custom formed zinc gutter. Gutter at 125mm deep at low point, 75mm at high point.



For additional gutter detail, see PO provided Rheinzink detail pack.

Rheinzink Vapozink underlay under 25mm zinc standing seam finish.

Rigid Insulation below custom formed zinc gutter. Gutter at 125mm deep at low point, 75mm at high point.

KEY:

- FFL - Finished Floor Level (also Top of Screenshot)
- SSL - Structural Slab Level (also top of Beam & Block Floor)
- TOS - Top of Steel
- LW TOS - Lowered Ceiling Height Top of Steel (over Boot Room/ Laundry Area)
- TOC - Top of Channel
- CB XX - Centre Line of Battens level supporting external cladding (from FFL).

NOTES:

Review details with Project Orange plans, sections and elevations.

Review all structural items alongside Richard Jackson Engineering drawings and schedules.

Rev.	Date	By	Check

project orange

1st Floor, Cosmopolitan House
 10A Christina Street, London, EC2A 4PA
 T: +44 (0)20 7739 9255 F: +44 (0)20 7739 0103
 www.projectorange.com

417

Project
SHELLEY PRIORY BARN

Drawing
**SECTION DETAILS 08
 PROPOSED**

Job No.	Drawn	Date	Scale
1905	AA	30.09.20	1:10 @ A1 1:20 @ A3

THE COPYRIGHT DESIGN AND PATENTS ACT 1988 THIS DRAWING IS THE COPYRIGHT OF PROJECT ORANGE LTD AND MUST NOT BE COPIED OR REPRODUCED IN WHOLE OR PART BY ANY METHOD WHATSOEVER, WITHOUT THE PRIOR WRITTEN APPROVAL OF PROJECT ORANGE LTD

NOTES
 ALL SETTING OUT MUST BE CHECKED ON SITE
 ALL LEVELS MUST BE CHECKED ON SITE
 ALL DIMENSIONS MUST BE CHECKED ON SITE
 DO NOT SCALE FROM THIS DRAWING
 THIS DRAWING MUST NOT BE USED ON SITE UNLESS ISSUED FOR CONSTRUCTION