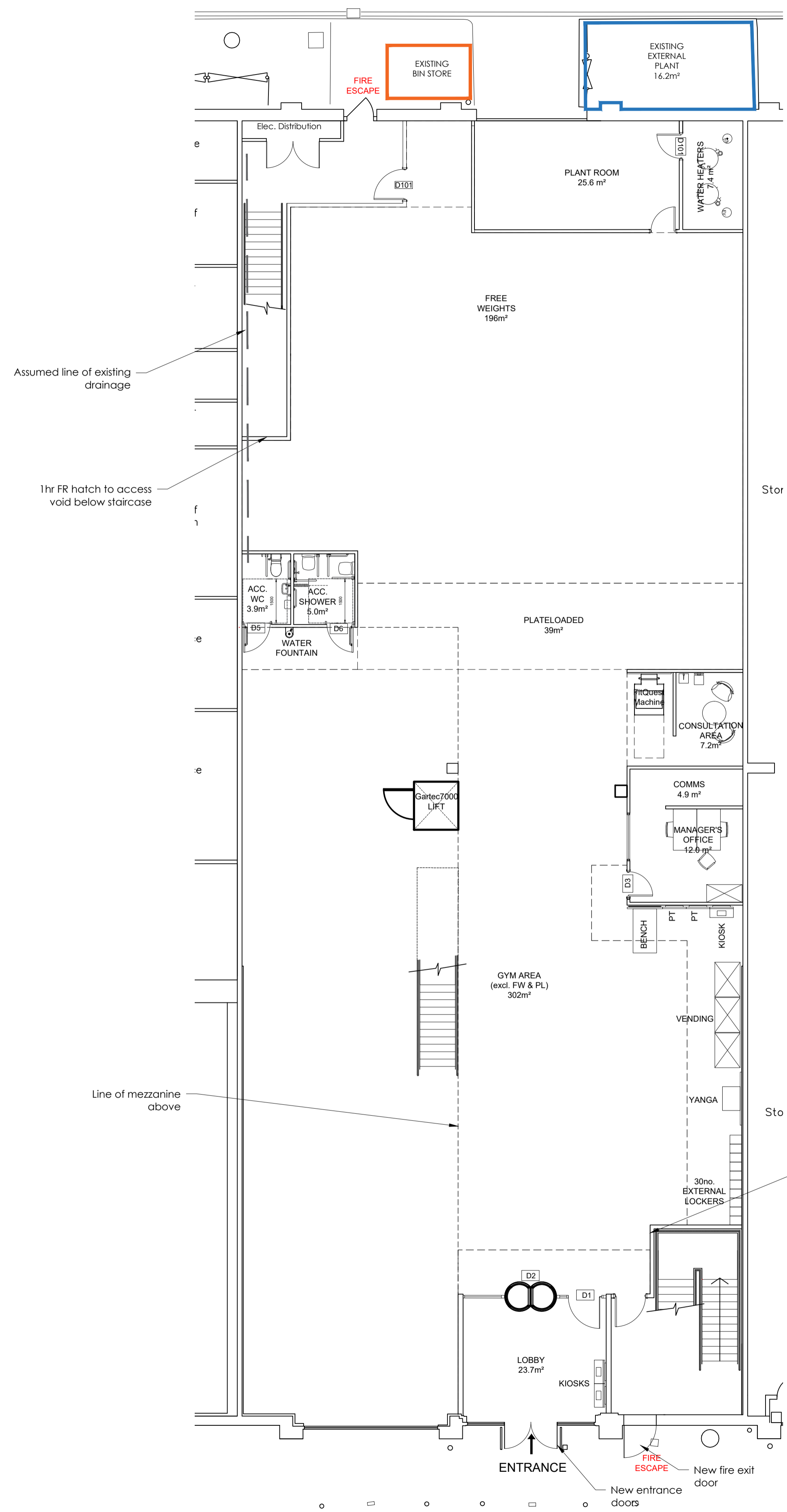
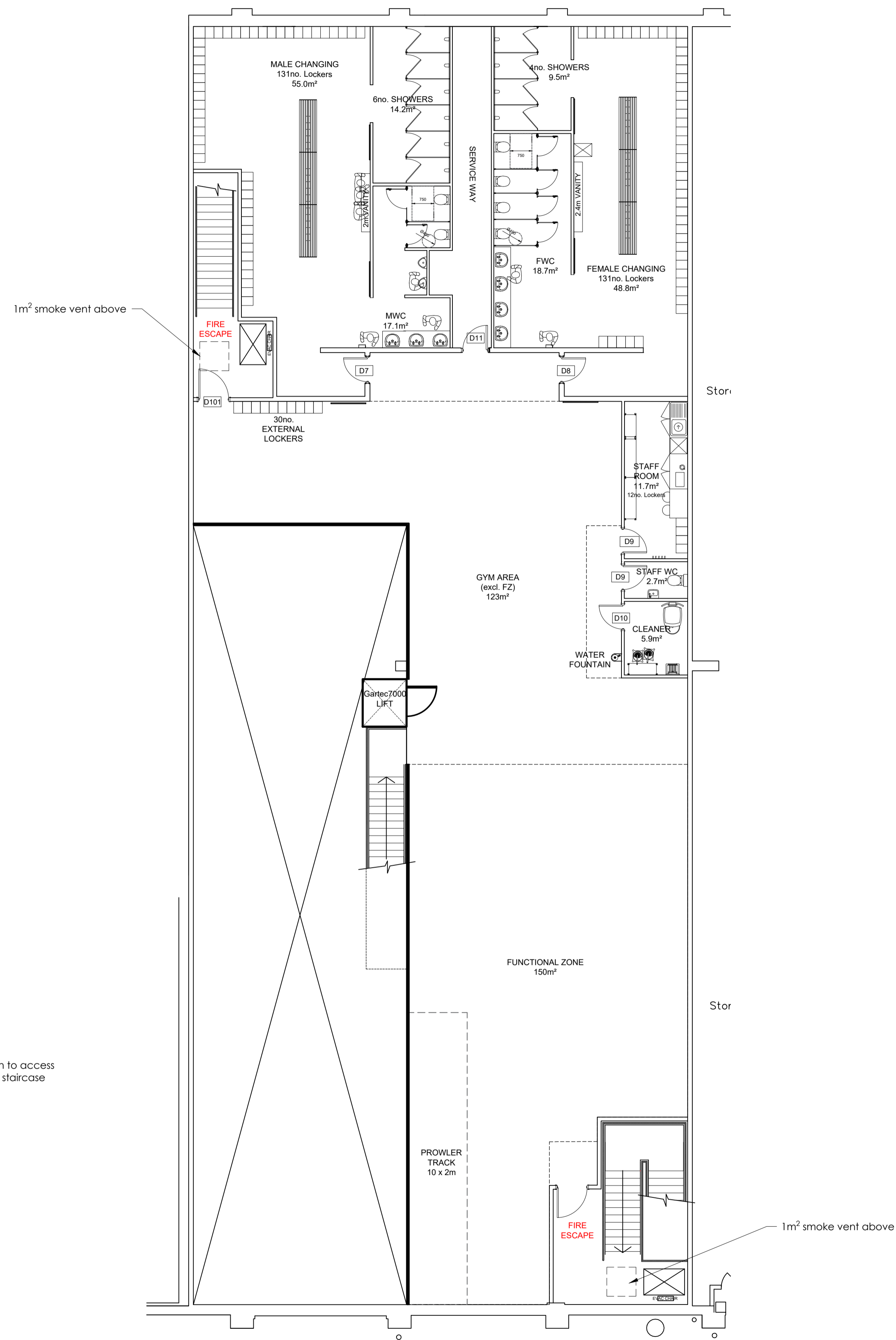


Schedule of Accommodation

	SQM	SQFT
GROUND FLOOR		
Net Gym Floor Space :	537	5,778
GIA :	746	8,030
MEZZANINE FLOOR		
Net Gym Floor Space :	273	2,937
GIA :	549	5,907
TOTAL GIA :	1,295	13,934



Ground Floor - Block Plan Layout
Scale 1:100



Mezzanine Floor - Block Plan Layout
Scale 1:100

REV	DATE	BY	Description	Chkd
4	23.04.2021	GDS	Existing bin store area added.	GDS
3	15.04.2021	GDS	Plant room relocated.	GDS
2	19.03.2021	GDS	Mezzanine size slightly increased. Acc wc/shower slightly moved.	GDS
1	09.03.2021	GDS	Accommodation stair added. Mezzanine shape amended and layout adjusted to suit.	GDS





3 Russell Place | Nottingham | NG1 5HJ
 0115 947 6065 | info@henrymein.co.uk | henrymein.co.uk
 Project:

Glasgow Forge Retail Park
 Proposed Gym Fit Out
 Drawing Title:
Block Plan Layout GF & MF
 Option 3

Date:	Mar 21	Scale:	1:100	Drawn By:	GDS
Revision:	P4	Media:	A1	Checked By:	CMG

Drawing Status:

PRELIMINARY

Drawing No.
7488 MEIN-00-XX-DR-A-SL 42-102

Project No. Originator Volume Level Type Role Drawing No.
 No part of this publication may be reproduced, stored in any retrieval system or transmitted in any form or by any means without prior permission of Henry Mein Partnership. All dimensions to be checked on site.