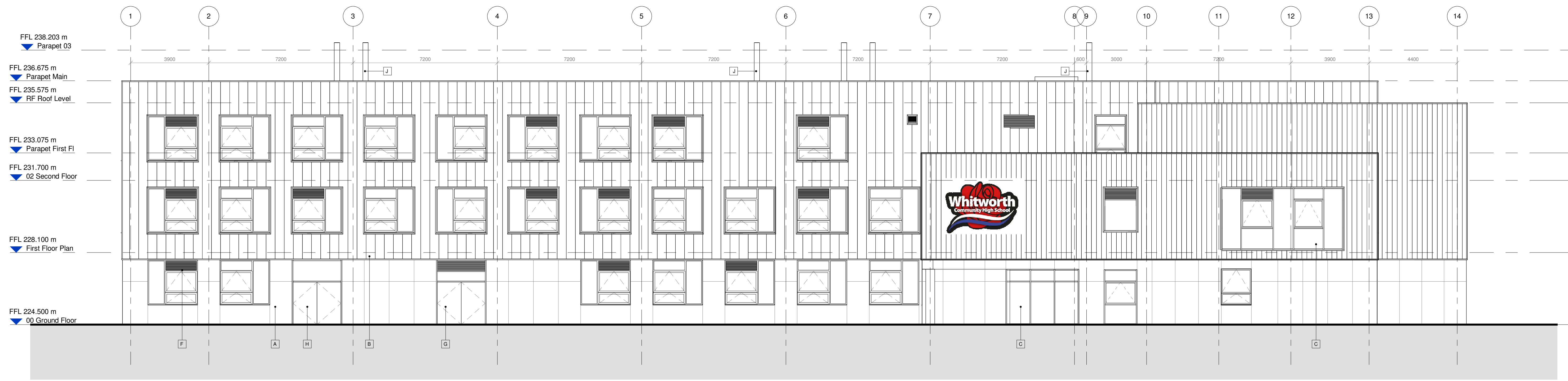


1 North Elevation 1-100
1 : 100



2 South Elevation 1-100
1 : 100

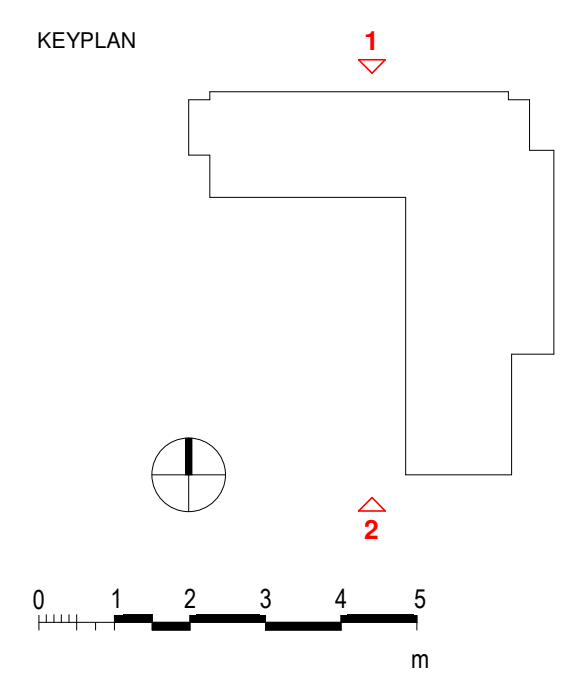
© COPYRIGHT
The copyright in this drawing is vested in Sheppard Robson and no license or assignment of any kind has been, or is, granted to any third party whether by provision of copies or originals or otherwise unless agreed in writing.

DO NOT SCALE FROM THIS DRAWING
The contractor shall check and verify all dimensions on site and report any discrepancies in writing to Sheppard Robson before proceeding work.

FOR ELECTRONIC DATA ISSUE
Electronic Data / drawings are issued as "read only" and should not be interrogated for measurement. All dimensions and levels should read, only from those values stated in text on the drawing.

- A FIBRE CEMENT BOARD - (RAL Colour TBC)
- B RAISED SEAM ALUMINIUM CLADDING - (RAL Colour TBC)
- C GLAZED CURTAIN WALL - Glass panes with PPC aluminium frames and PPC louvers to match (RAL Colour TBC)
- D GLAZED DOORS - Part of curtain wall system
- E GLAZED DOORS - Glass panes with PPC aluminium frames (RAL Colour TBC)
- F WINDOWS - PPC aluminium framed windows and PPC aluminium louvers to match (RAL Colour TBC)
- G LOUVRED DOOR - PPC aluminium to match frames (RAL Colour TBC)
- H STEEL DOORS - PPC finish (RAL Colour TBC)
- J FLUE - Stainless Steel

REV.	DATE	AMENDMENT
P01	16/04/2021	Issued for 'Planning'
P02	24/04/2021	Issued for 'Planning'



STATUS: S2
PURPOSE FOR ISSUE: Planning

SHEPPARD ROBSON
77 Parkway Camden Town London NW1 7PU
T: +44 (0)20 7504 1700 E: enquiries@sheppardrobson.com

SCALE@A1 DATE ORIGINATOR CHECKED AUTHORISED
1 : 100 24/04/2021 GM HI JJ

Whitworth Community High School
General Arrangement
North & South Elevation 1:100

SR NO. 6711
REV. P02

Stage 2/3
DRAWING NO. WCHS - SRA-XX-XX-DR - A - 02202