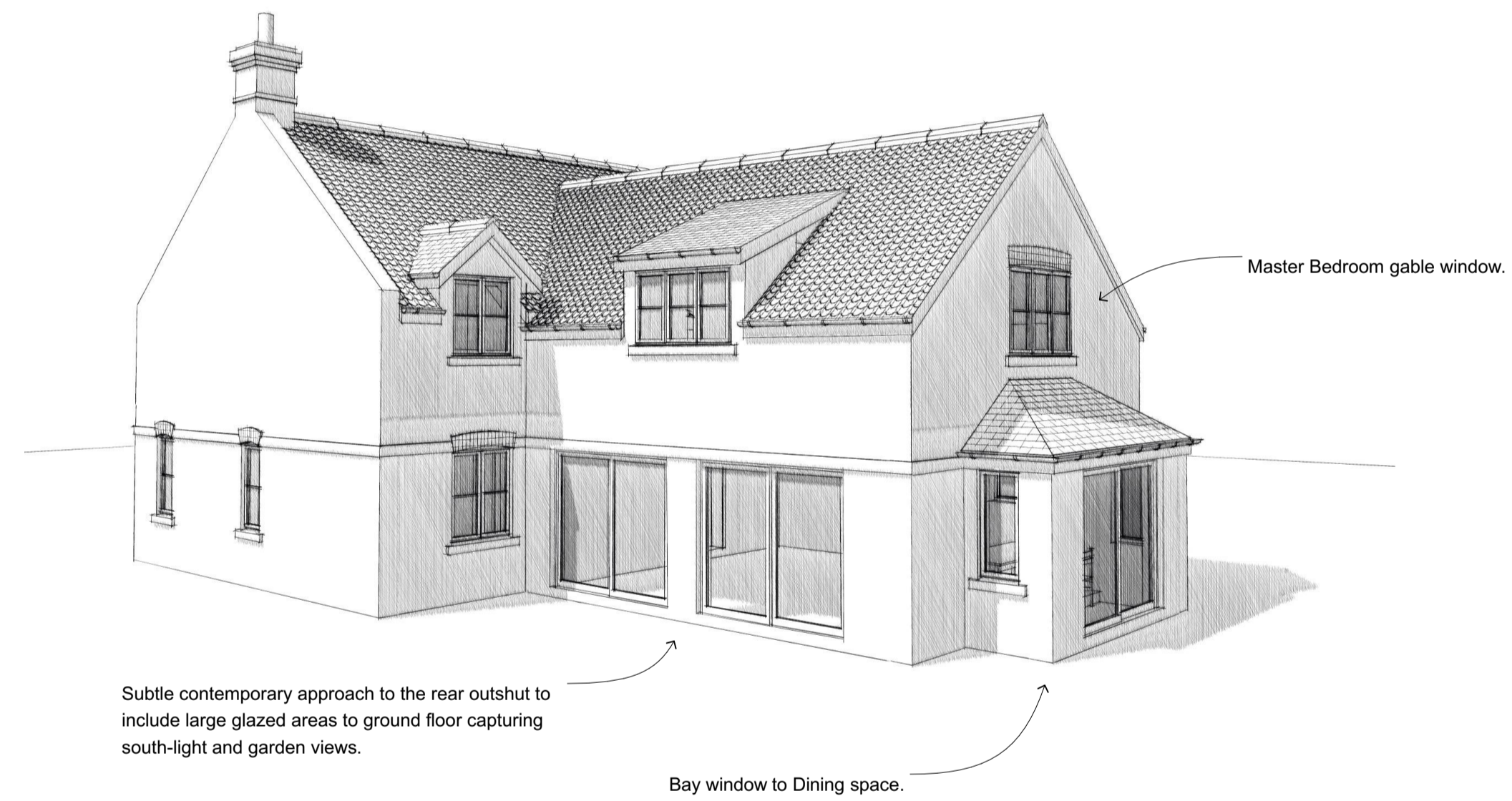
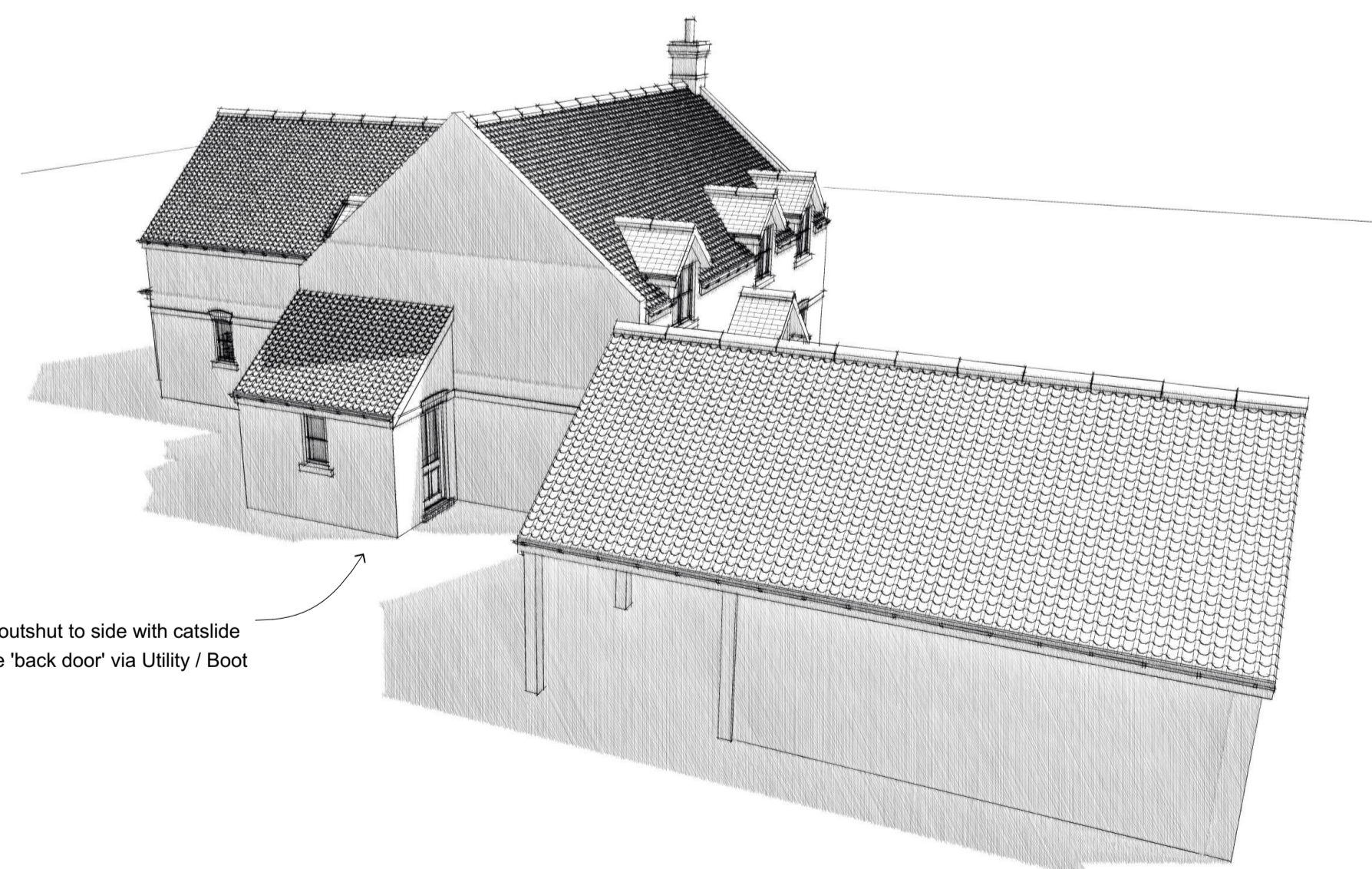


Linear double garage with open car-port / store closest to dwelling. Brickwork with pantile roof with Oak frontage to garage and Oak frame to car-port.

Traditional design approach to the principal elevation taking precedent from the existing cottage and general character of historic Lowthorpe which includes 1.5 storey cottages of linear plan-form with eaves dormers with dual pitched roofs. Gable parapets and casements windows.



Bay window to Dining space.



Single storey outshut to side with catslide roof to provide 'back door' via Utility / Boot Room.



Project  
Replacement dwelling  
Project Address  
Keeper's Cottage, Lowthorpe

Client  
Ben Legard Estate  
Project Stage  
**Planning**

Drawing Title  
**Sketch Perspectives**

Drawing Date  
February 2021  
Drawing Scale  
Not to scale at A1

**Walker Graham Architects**

3 New Street  
York  
YO1 8RA  
T: 01904 848 868

44 South Bar Street  
Banbury  
OX16 9AB  
T: 01295 709 247

E: [architecture@walkergraham.co.uk](mailto:architecture@walkergraham.co.uk)  
[walkergraham.co.uk](http://walkergraham.co.uk)

rev. B (04.03.21) East door to Utility omitted.  
rev. A (01.03.21) Revised to comments received 05.01.21.  
Project No. Drawing No.

**WG934 04 B**