

**MATERIALS:**

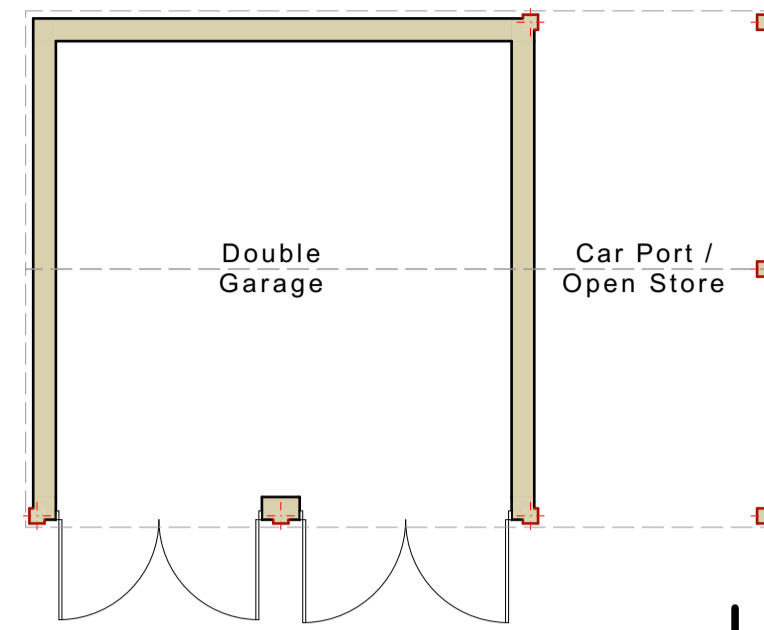
**Roof:**  
 - Red clay pantiles to principal roofplanes with red clay plain tiles to smaller roofs (such as dormers and Porch). Angular stone ridge tiles. Black plastic half-round / round rainwater goods.

**Walls:**  
 - Antique blend facing brickwork with segmental arch heads to openings and stone sills.  
 - Brickwork eaves corbelling, tumbled brickwork gable parapets, string course.  
 - Oak framed Porch and car-port.  
 - Vertical board-on-board timber cladding to car-port and Porch.  
 - Painted timber fascia and bargeboard to dormers. Lead cheeks.

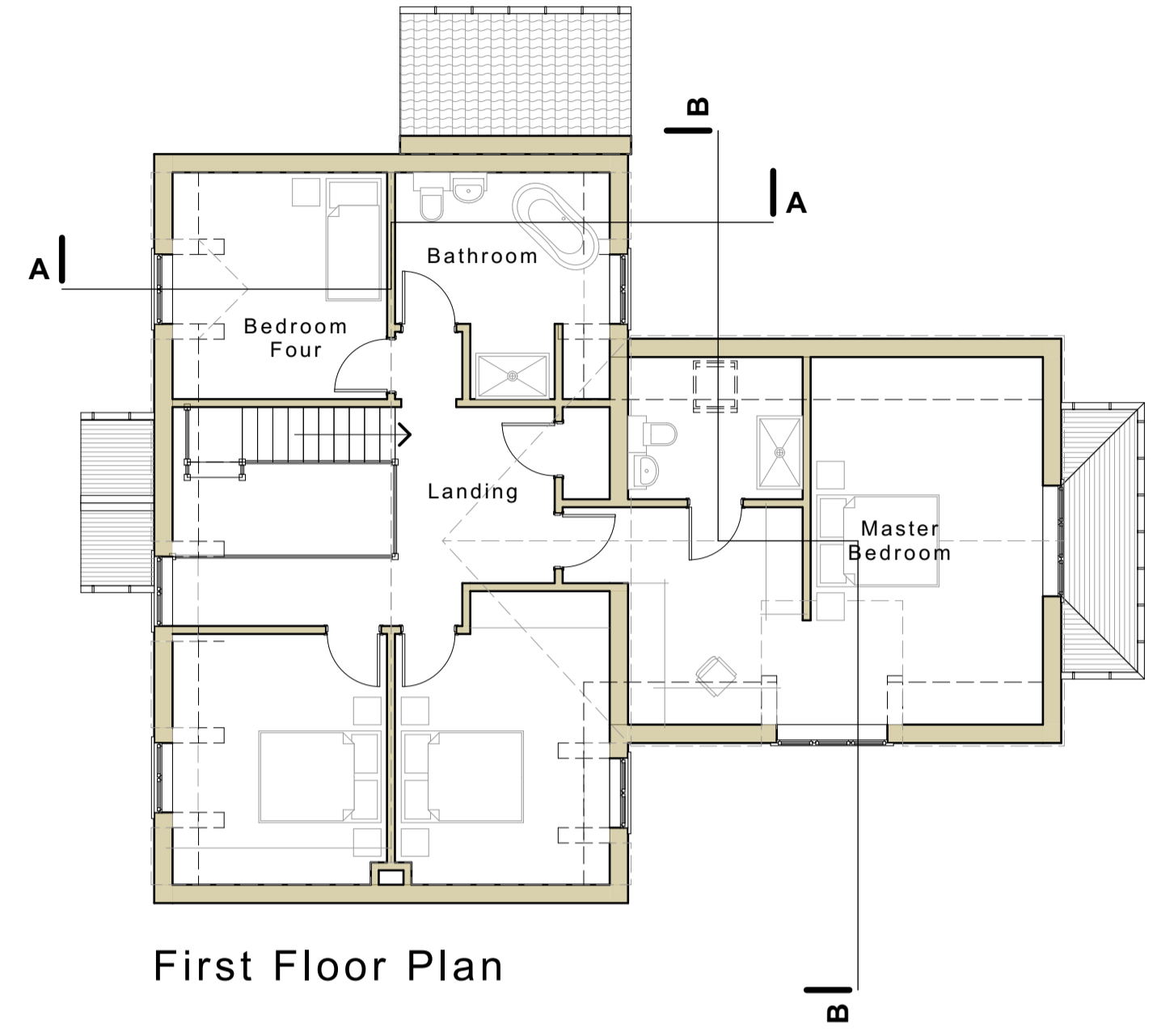
**Windows and doors:**  
 - Woodgrain effect plastic window frames in solid colour with double glazing.  
 - Aluminium framed sliding doorsets with double glazing in colour to match windows.



South-West Elevation



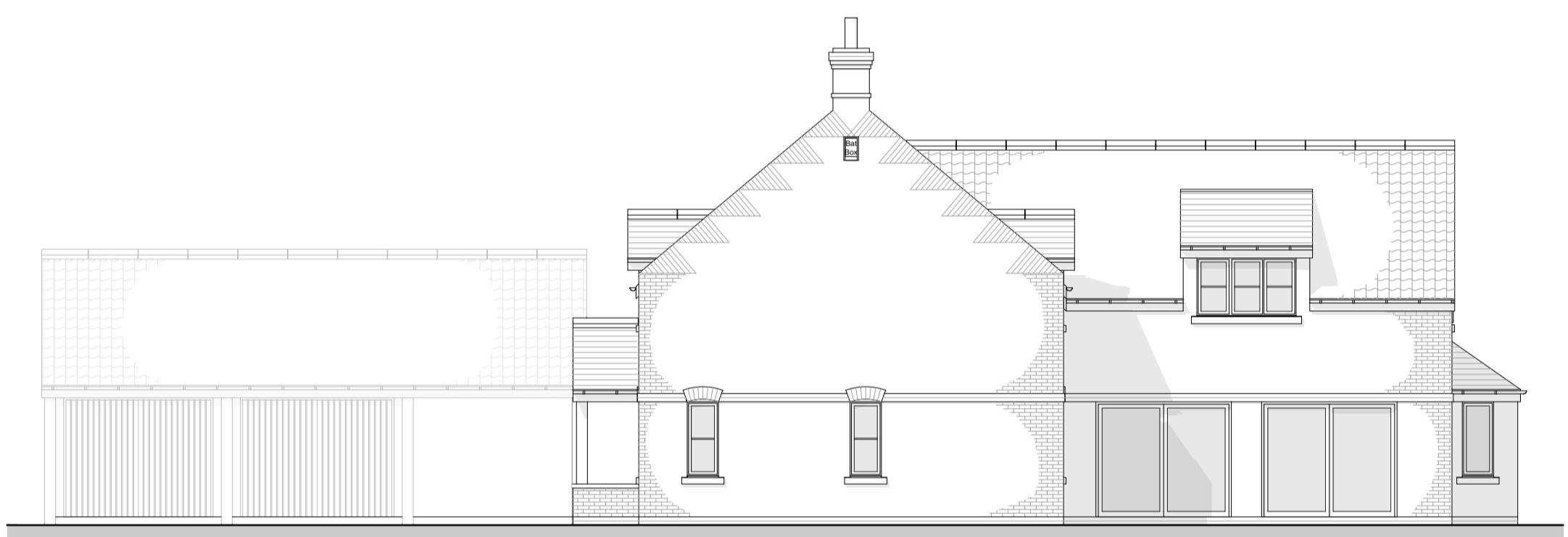
Ground Floor Plan



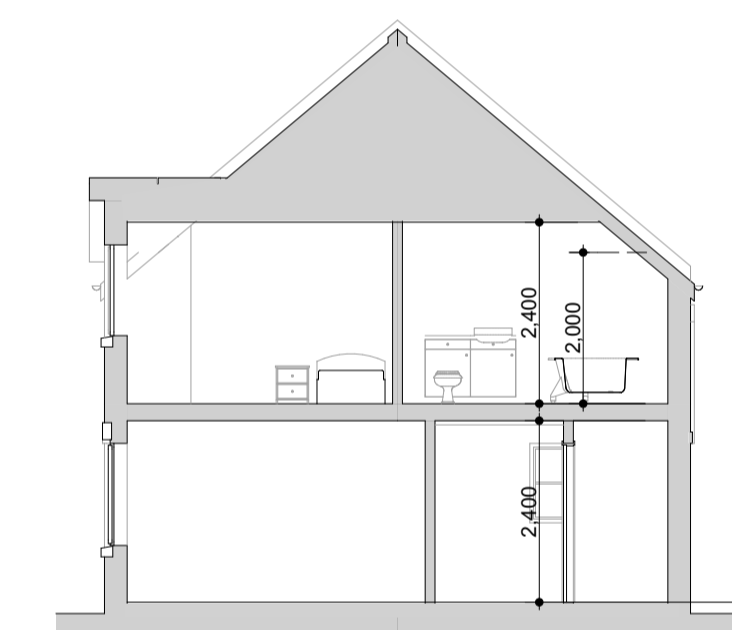
First Floor Plan



South-West Elevation



South-East Elevation



Section A



Section B



North-West Elevation



North-East Elevation



Project  
 Replacement dwelling  
 Project Address  
 Keeper's Cottage, Lowthorpe

Client  
 Ben Legard Estate  
 Drawing Title  
 Proposal drawings

Drawing Date  
 December 2020  
 Drawing Scale  
 1:100 at A1

**Walker Graham Architects**

3 New Street  
 York  
 YO1 8RA  
 T: 01904 848 868

44 South Bar Street  
 Banbury  
 OX16 9AB  
 T: 01295 709 247

rev. G (11.05.21) Revised to validation request.  
 rev. F (12.04.21) Material note revision.  
 rev. E (04.03.21) East door to Utility omitted.  
 rev. D (01.03.21) Developed to comments following review meeting.  
 rev. C (15.02.21) Developed to comments following review meeting.  
 rev. B (05.02.21) Developed to comments received 19.01.21.  
 rev. A (18.01.21) Revised to comments received 05.01.21.  
 Project No. Drawing No.

**WG934 03 G**