

NOTES

GENERAL NOTES :-

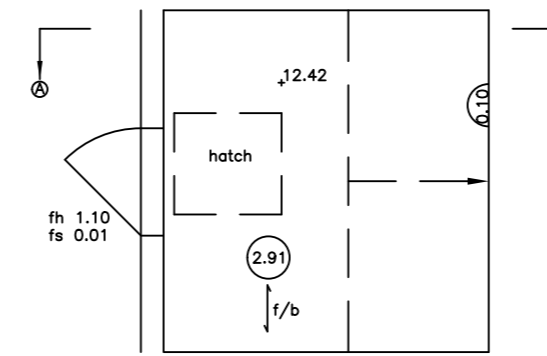
ALL LEVELS ARE IN METRES DERIVED FROM GPS TRANSFORMATION.
THIS DRAWING HAS BEEN PRODUCED WITH A PLOT SCALE ACCURACY OF 1:50

BUILDING SURVEY KEY :-

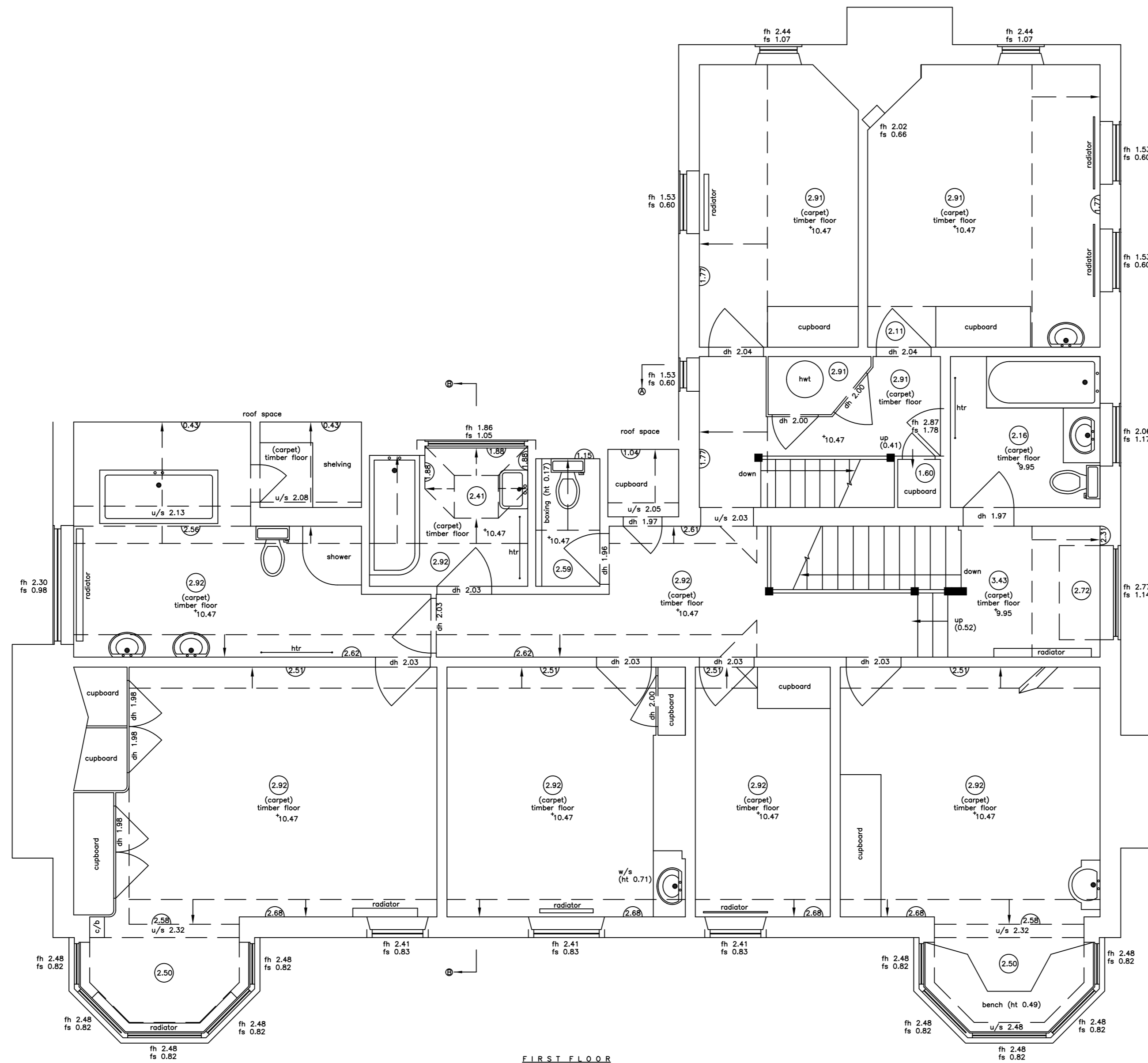
- | | |
|---------------------------|-----------------------------------|
| ⊕ - room height | hwt - hot water tank |
| ⊖ - floor boards | ic - inspection cover |
| ⊕ - pipe diameter | il - invert level |
| g/b - air brick | mb - manhole cover |
| ab - alarm box | OSBM - Ordnance Survey bench mark |
| ah - arch head height | q/dies - quarry dies |
| bd - back drop | rad - radiator |
| bk - brick | rf - roof light |
| conc - concrete | rwp - rain water pipe |
| cr - cable riser | sfc - soil filled chamber |
| db - fuse box | sh - floor to sill height |
| dh - door height | sp - arch springing point |
| dp - depth | sp - soil pipe |
| e/mtr - electricity metre | susc - suspended ceiling |
| elec - electricity | svp - soil vent pipe |
| f/s - fire place | Lrnl - heated towel rail |
| fh - floor to head height | TBM - temporary bench mark |
| fl - floor level | tl - threshold level |
| fs - floor to sill height | top - top of cap |
| g/mtr - gas metre | top - top of pipe |
| gr - gas riser | tot - top of tank |
| hd - hand dryer | u/s - underside height |
| hr - heater | u/s - unable to lift |
| | vp - vent pipe |
| | wf - water fountain |
| | wfc - water filled chamber |
| | wp - waste pipe |

SERVICES KEY :-

- | | | | |
|-------|--------------------------------|-------|--------------------------|
| ⊖ | strip light | AK | alarm keypad |
| ⊗ | light | IC | intercom |
| ⊕ | wall light | ACP | alarm control panel |
| ⊕ | emergency light | SPK | speaker |
| ● | spot light | PRG | projector |
| ○ | pull cord | CCCTV | closed circuit tv |
| ⊖ | vent/extractor | SP | sensor |
| ⊖ | switch | LJ | network point |
| LJ | light switch | NC | coaxial aerial |
| LS | fused switch | SD | smoke detector |
| IS | isolator switch | ⊕ | heat detector |
| CS | cooker switch | LJ | fire alarm siren |
| F | fuse | FA | fire alarm siren |
| BS | blank socket | SP | fire alarm siren |
| SS | single socket | SP | fire alarm siren |
| DS | double socket | SP | fire alarm siren |
| CS/SW | ceiling socket/fuse/switch | ⊕ | water fire extinguisher |
| TS | thermostat | ⊕ | co2 fire extinguisher |
| CA | card access point (swipe card) | ⊕ | powder fire extinguisher |
| EDR | emergency door release | ⊕ | fire extinguisher |
| | | FAP | fire alarm control panel |



SECOND FLOOR



FIRST FLOOR

NORTH POINT :-



MIDLAND SURVEY LTD

HEAD OFFICE
Cromwell House, Westfield Road, Southam, Warwickshire, CV47 0JH.
Tel: 01926 810811 Fax: 01926 810812
E-Mail: mail@midlandsurvey.co.uk
www.midlandsurvey.co.uk

Client MR & MRS O'SULLIVAN

Project APULDRAM HOUSE, DELL QUAY ROAD, CHICHESTER, WEST SUSSEX, PO20 7EE

Title FIRST FLOOR PLANS

Date OCTOBER 2020 Revisions

Scale 1:50BA1

Dwg No H1416 - 4

Surveyor S.A.M

Checked L.G.G

TOPOGRAPHICAL (LAND) SURVEYORS / UTILITY SURVEYORS
BUILDING MEASUREMENT SURVEYORS / 3D LASER SCANNING

