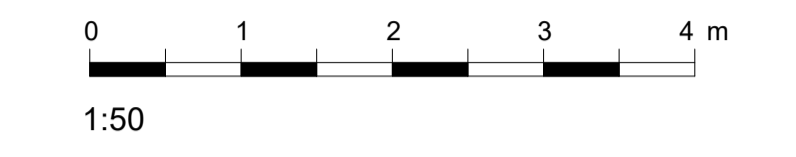


SETTING OUT - NOTE FOR CONTRACTOR

It is the responsibility of the contractor to check all setting out information (levels, dimensions, co-ordinates, etc.) indicated on this drawing for the whole of the works prior to commencement of the works and record the results on a copy of this drawing. Rock Townsend Architects LLP shall be notified of any discrepancies and no work shall be commenced until further instructions are received in writing.



Refer to 00400 series for GA plans
Refer to 00800 series for GA sections

ED - External Door
W - Window Type

AB - Air brick with telescopic vent (6000mm² free area) externally

NB - Nest Box (Sparrow Terrace)
BB - Bat Box (Wall-mounted)

RWP - Rain Water Pipes

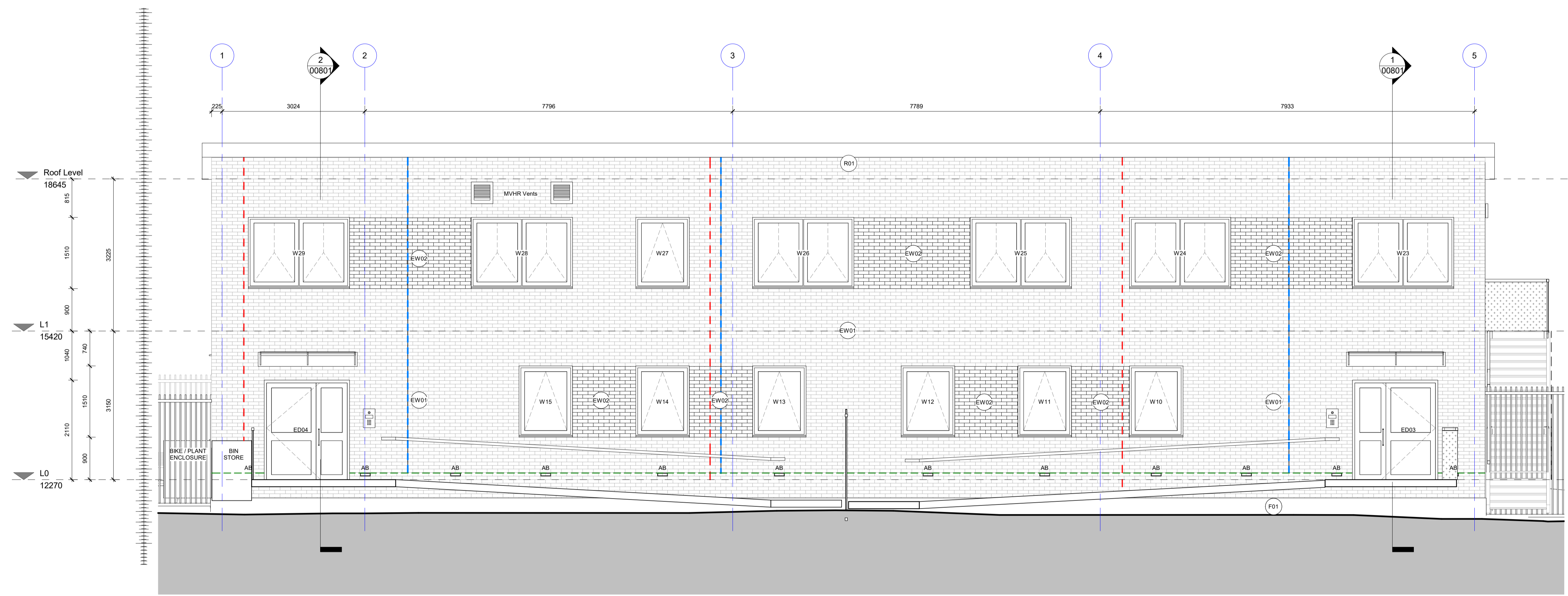
MJ - Movement Joint
DPC - Damp Proof Course

Materials:

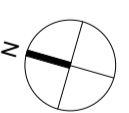
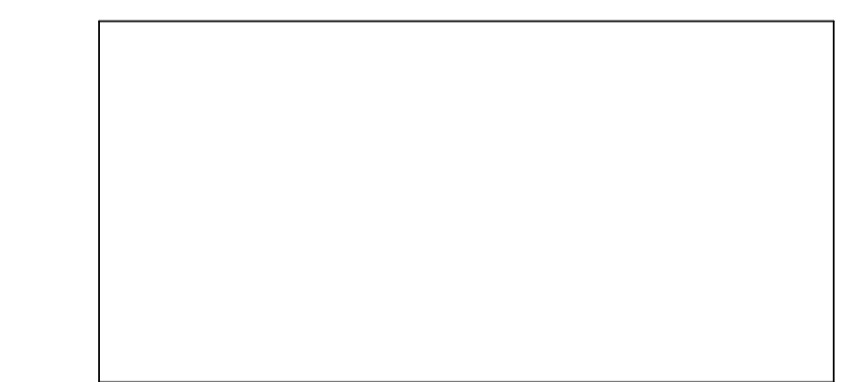
EW01 - Facing Brick - Red MultiStock
EW02 - Special Brickwork - Red 'Sawtooth'

R01 - Standing Seam Aluminium Roof

F01 - Concrete Plinth, facing TBC



PR03	S73 Application Changes - Amending window sizes/position to improve daylighting - net gain in glazed area & special brickwork. Removal of door at GF. Change to mono-pitch roof with minor increase in building height. Changes to fencing to Secure By Design Officer's requirements. Reduction in plant enclosure. Addition of MVHR vents. Relocation of refuse store away from fire escapes. Removal & replacement of existing trees due to poor condition.	30/04/21	SK
PR02	Window proposals marked up to improve daylighting	29/03/21	SK
PR01	First Issue	09/03/21	SK
REVISIONS			DATE/DRAWN



Key Plan

PROJECT	HARPLEY SCHOOL		
	Tollet Street, E1 4EE		
DRAWING TITLE	GA ELEVATION		
	SHEET 03		
DATE	FEB 21	DRAWN	CS
SCALE	1 : 50	@ A1	CHECK
STATUS	PRELIMINARY		
RT JOB NO.	RT20087	REVISION	PR02
DRAWING NO.	HS-RTA-XX-XX-DR-A-00703		

The Old School, Eton Street, London, SE1 8LE
020 7261 9577
rocktownsend.co.uk

Rock Townsend