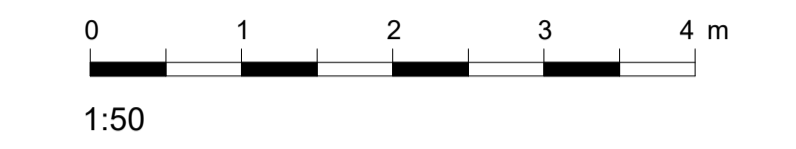


SETTING OUT - NOTE FOR CONTRACTOR

It is the responsibility of the contractor to check all setting out information (levels, dimensions, co-ordinates, etc.) indicated on this drawing for the whole of the works prior to commencement of the works and record the results on a copy of this drawing. Rock Townsend Architects LLP shall be notified of any discrepancies and no work shall be commenced until further instructions are received in writing.



Refer to 00400 series for GA plans
Refer to 00800 series for GA sections

ED - External Door
W - Window Type

AB - Air brick with telescopic vent (6000mm² free area) externally

NB - Nest Box (Sparrow Terrace)
BB - Bat Box (Wall-mounted)

RWP - Rain Water Pipes

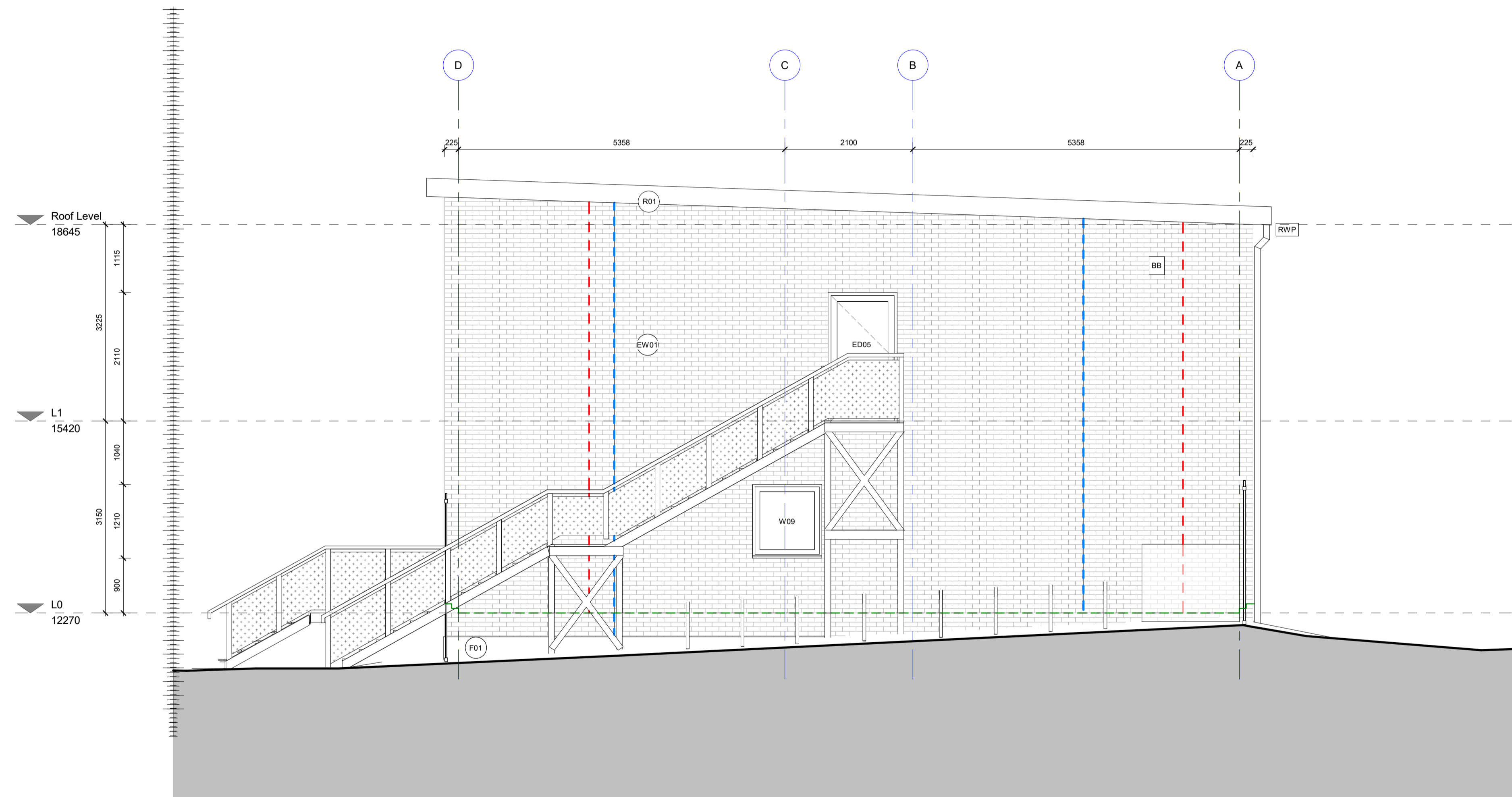
--- MJ - Movement Joint
--- DPC - Damp Proof Course

Materials:

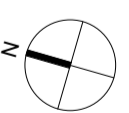
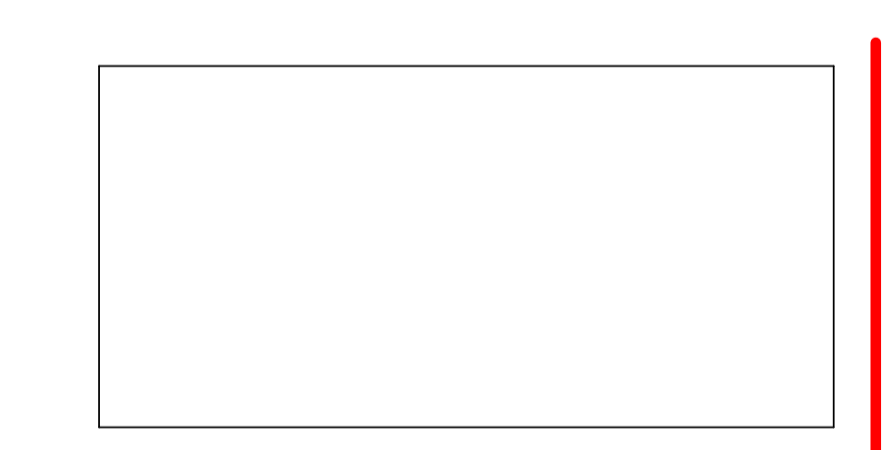
EW01 - Facing Brick - Red MultiStock
EW02 - Special Brickwork - Red 'Sawtooth'

R01 - Standing Seam Aluminium Roof

F01 - Concrete Plinth, facing TBC



PR02	S73 Application Changes - Amending window sizes/position to improve daylighting - net gain in glazed area & special brickwork. Removal of door at GF. Change to mono-pitch roof with minor increase in building height. Changes to fencing to Secure By Design Officer's requirements. Reduction in plant enclosure. Addition of MVHR vents. Relocation of refuse store away from fire escape. Removal & replacement of existing trees due to poor condition.	30/04/21	SK
PR01	First Issue	09/03/21	SK
REVISIONS		DATE/DRAWN	



Key Plan

The Old School, Eton Street, London, SE1 8UE rocktownsend.co.uk	PROJECT	HARPLEY SCHOOL		Rock Townsend
		Tollet Street, E1 4EE		
	DRAWING TITLE	GA ELEVATION		
	SHEET 01			
	DATE	FEB 21	DRAWN	CS
	SCALE	1 : 50	@ A1	CHECK
	STATUS	PRELIMINARY		
	RT JOB NO.	RT20087	REVISION	PR01
	DRAWING NO.	HS-RTA-XX-XX-DR-A-00701		