
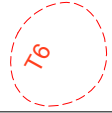

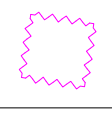


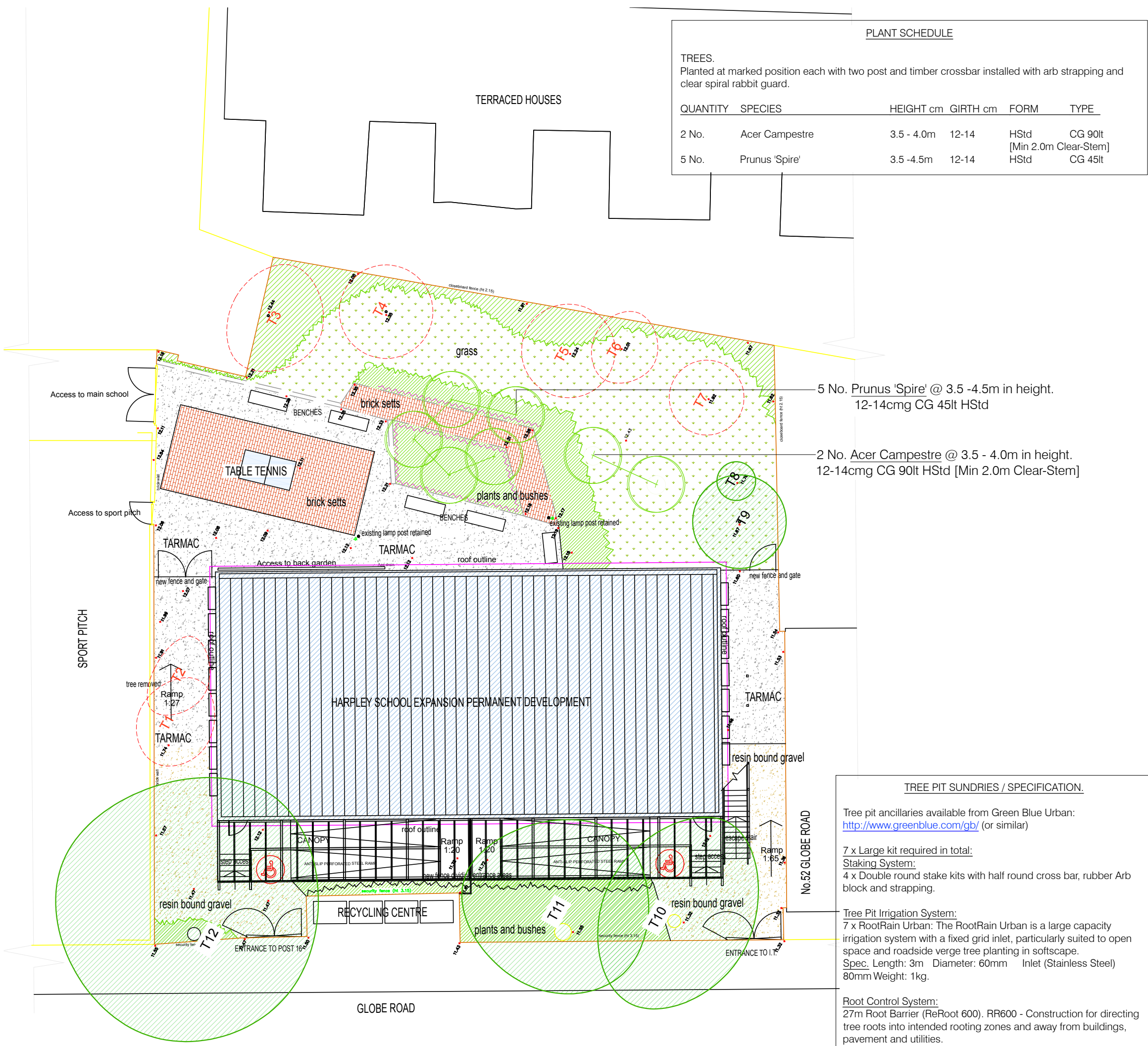
**PLANT SCHEDULE**

TREES.  
Planted at marked position each with two post and timber crossbar installed with arb strapping and clear spiral rabbit guard.

QUANTITY	SPECIES	HEIGHT cm	GIRTH cm	FORM	TYPE
2 No.	Acer Campestre	3.5 - 4.0m	12-14	HStd [Min 2.0m Clear-Stem]	CG 90lt
5 No.	Prunus 'Spire'	3.5 -4.5m	12-14	HStd	CG 45lt

**KEY  
soft landscape**

-  EXISTING RETAINED TREES  
Retained trees and canopy boundary of existing trees, shrubs & hedges as positioned following topographical survey of the existing site and Arboricultural Assessment & Method Statement. Ref. PJC 5387/19
-  EXISTING TREES TO BE REMOVED  
Trees and canopy boundary of existing trees, shrubs & hedges as positioned following topographical survey of the existing site and Arboricultural Assessment & Method Statement which are to be removed. Ref. PJC 5387/19
-  PROPOSED TREE PLANTING  
Proposed tree planting [mitigation tree planting]. Minimum 900mm depth of specific purpose free draining topsoil to BS 3882:2015 for tree planting.
-  ROOT CONTROL - LANDSCAPE ROOT BARRIER  
Product: Root Barrier (ReRoot 600). RR600 - Green Blue Urban or similar approved  
Approx. positioning of root barrier dependant on local ground conditions and services. M&E engineer & site contractor to have final positioning.



5 No. Prunus 'Spire' @ 3.5 -4.5m in height.  
12-14cmg CG 45lt HStd

2 No. Acer Campestre @ 3.5 - 4.0m in height.  
12-14cmg CG 90lt HStd [Min 2.0m Clear-Stem]

**TREE PIT SUNDRIES / SPECIFICATION.**

Tree pit ancillaries available from Green Blue Urban:  
<http://www.greenblue.com/gb/> (or similar)

7 x Large kit required in total:  
Staking System:  
4 x Double round stake kits with half round cross bar, rubber Arb block and strapping.

Tree Pit Irrigation System:  
7 x RootRain Urban: The RootRain Urban is a large capacity irrigation system with a fixed grid inlet, particularly suited to open space and roadside verge tree planting in softscape.  
Spec. Length: 3m Diameter: 60mm Inlet (Stainless Steel)  
80mm Weight: 1kg.

Root Control System:  
27m Root Barrier (ReRoot 600). RR600 - Construction for directing tree roots into intended rooting zones and away from buildings, pavement and utilities.

All works to conform to BS 5837:2012 Trees in relation to design, demolition and construction. Plus conforming to arboricultural method statements.  
BS 4428:1989 Code of practice for general landscape operations (excluding hard surfaces)  
BS 8545:2014 Trees: from nursery to independence in the landscape. Recommendations  
ASTM D5268 - 13  
Standard Specification for Topsoil Used for Landscaping Purposes  
**NOTE:**  
This drawing indicates design arrangement only. All works to be undertaken in accordance with best practice and all current BS & Building Regulations. Do not scale from drawing. Use figured dimensions only after checking.

*This drawing should be viewed in colour.*

Drawing no: PJC.1021.001 Rev: B Sheet number: 1 of 1

**Client and site:**  
Land at Harpley School  
Tollet Street  
London  
E1 4EE

Drawing title: Replacement Tree Planting Strategy Plan

Date drawn: 08/04/2021

Scale: 1:200 at A3

Drawn by: TR Checked by: PD

**PJC Consultancy**  
Sussex  
Rocks Yard, Victoria Road, Herstmonceux, Hailsham, East Sussex, BN27 4TQ.  
01323 832120  
Kent  
Unit 1, Hanover Mill, Marsham, Ashford, Kent, TN25 6NU.  
01233 225365  
www.pjcconsultancy.com