

Claydon Estate  
Residential Property  
Tree management plan  
Survey maps 2021

## Contents.

Page 1	Title page
Page 2	Contents
Page 3	Hedge adjacent to Willow farm, West Street, Steeple Claydon. MK18 2NS
Page 4	12 and 14 QC Road, Steeple Claydon. MK18 2PY
Page 5	5-9 Buckingham Road, Steeple Claydon. MK18 2QA
Page 6	1 Buckingham Road, 24-28 QC Road, Steeple Claydon. MK18 2PY
Page 7	Rookery Farmhouse. Excluded from survey.
Page 8	Rectory Farmhouse, QC Road, Middle Claydon. MK18 2EU
Page 9	The Old Brickyard, Middle Claydon. MK18 2HB
Page 10	Beech House, Middle Claydon. MK18 2EU
Page 11	The Circle Centre, Middle Claydon. MK18 2ET
Page 12	Rosedene, Middle Claydon. MK18 2ET
Page 13	Ballams, Middle Claydon. MK18 2ET
Page 14	Townsend Cottages, Middle Claydon. MK18 2ET
Page 15	Mount Pleasant Farm, Middle Claydon. MK18 2LE
Page 16	Verney Arms, Verney Junction. Unoccupied construction site.
Page 17	Pond Farmhouse, The Old Dairy, Granary Cottage, Calvert Road, Steeple Claydon. MK18 2HD
Page 18	Blackmorehill Farm Cottages, Calvert Road, Middle Claydon. MK18 2HA
Page 19	Catherine Farmhouse, Calvert Rd, Middle Claydon. MK18 2EZ.
Page 20	Knowhill Farm, Calvert Road, Steeple Claydon. MK18 2EZ.
Page 21	Finmerehill House, via Knowhill Farm, Calvert Road. MK18 2EZ.
Page 22	1 and 2 South Lodge, Middle Claydon. MK18 2EZ.
Page 23	10, 12, 14, 16 Orchard Way, Botolph Claydon. MK18 2NG
Page 24	17 Orchard Way and Corner House, Botolph Claydon. MK18 2LR
Page 25	Bernwood Farm, Weir Lane, Botolph Claydon. MK18 2NF
Page 26	37, 39 and 63, Botolph Claydon. MK18 2LR
Page 27	Botyl Cottage and The School House, Botolph Claydon. MK18 2LR + 2LS
Page 28	Ivy Nook and Sion Hill Farm, East Claydon. MK18 2LR + 2LS
Page 29	1 and 3 Sandhill Road, 1-4 Briary Court and 28 Sandhill Road, East Claydon. MK18 2LY
Page 30	3 Church Way, East Claydon and Park Cottage, Claydon House. MK18 2NB + 2EX
Page 31	Garden Cottage and Brewery Cottage, Claydon House. MK18 2EX



Map 1. Hedge adjacent to Willow farm, West Street. MK18 2NS





Map 2. 12 and 14 Queen Catherine Road, Steeple Claydon. MK18 2PY





Map 3. No.5, 7, 9 Buckingham Road Steeple Claydon. MK18 2QA **No significant defects present.**





Map 4. No 1 Buckingham Road and 24,26,28 Queen Catherine Road Steeple Claydon. MK18 2PY  
**No significant defects present.**





Map 5. Rookery Farm Queen Catherine Road.

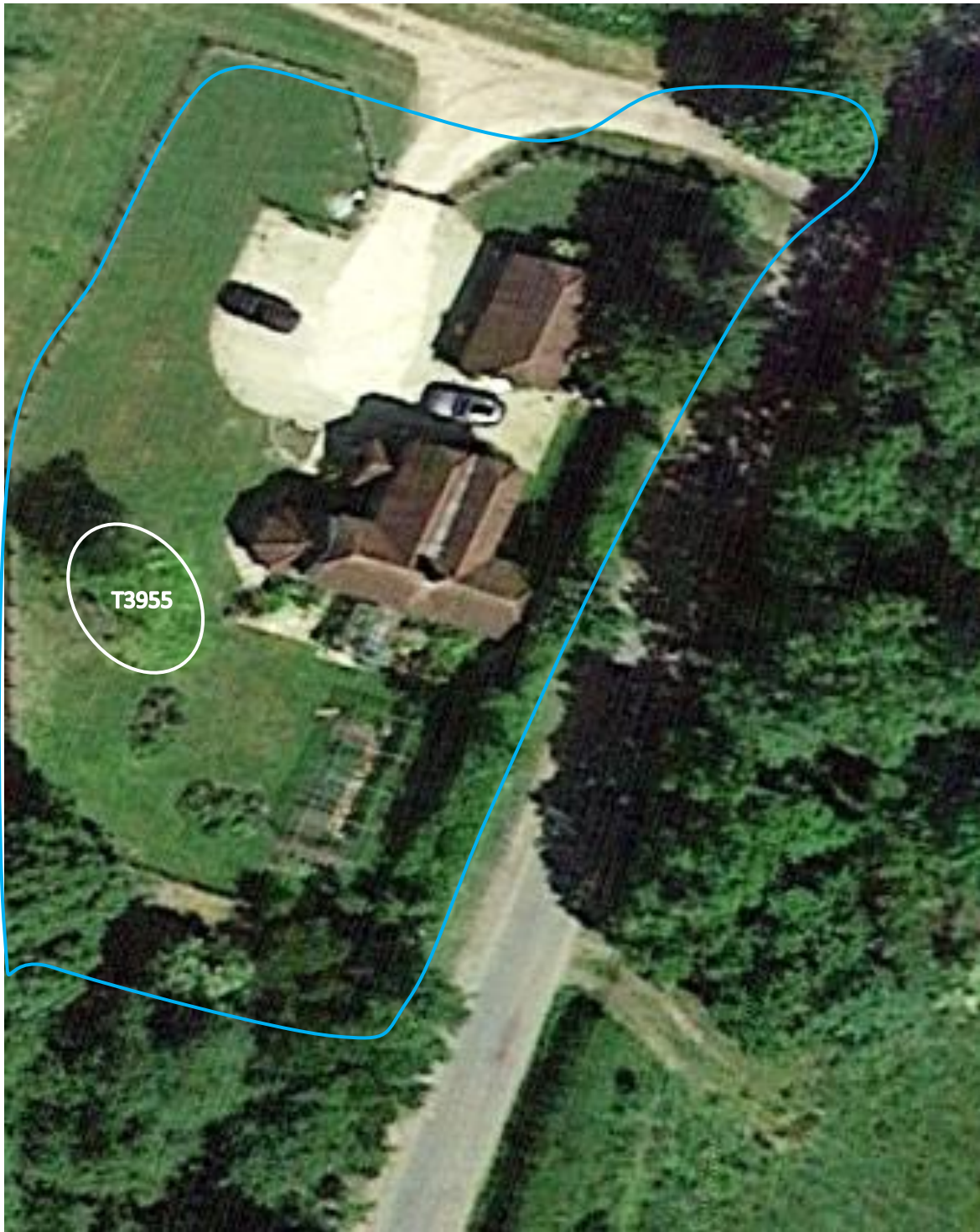
**Not included within survey**





Map 6. Rectory Farmhouse, Queen Catherine Road, Middle Claydon. MK18 2EU.





Map 7. The Old Brickyard (Bailiff Cottage) Middle Claydon. MK18 2HB



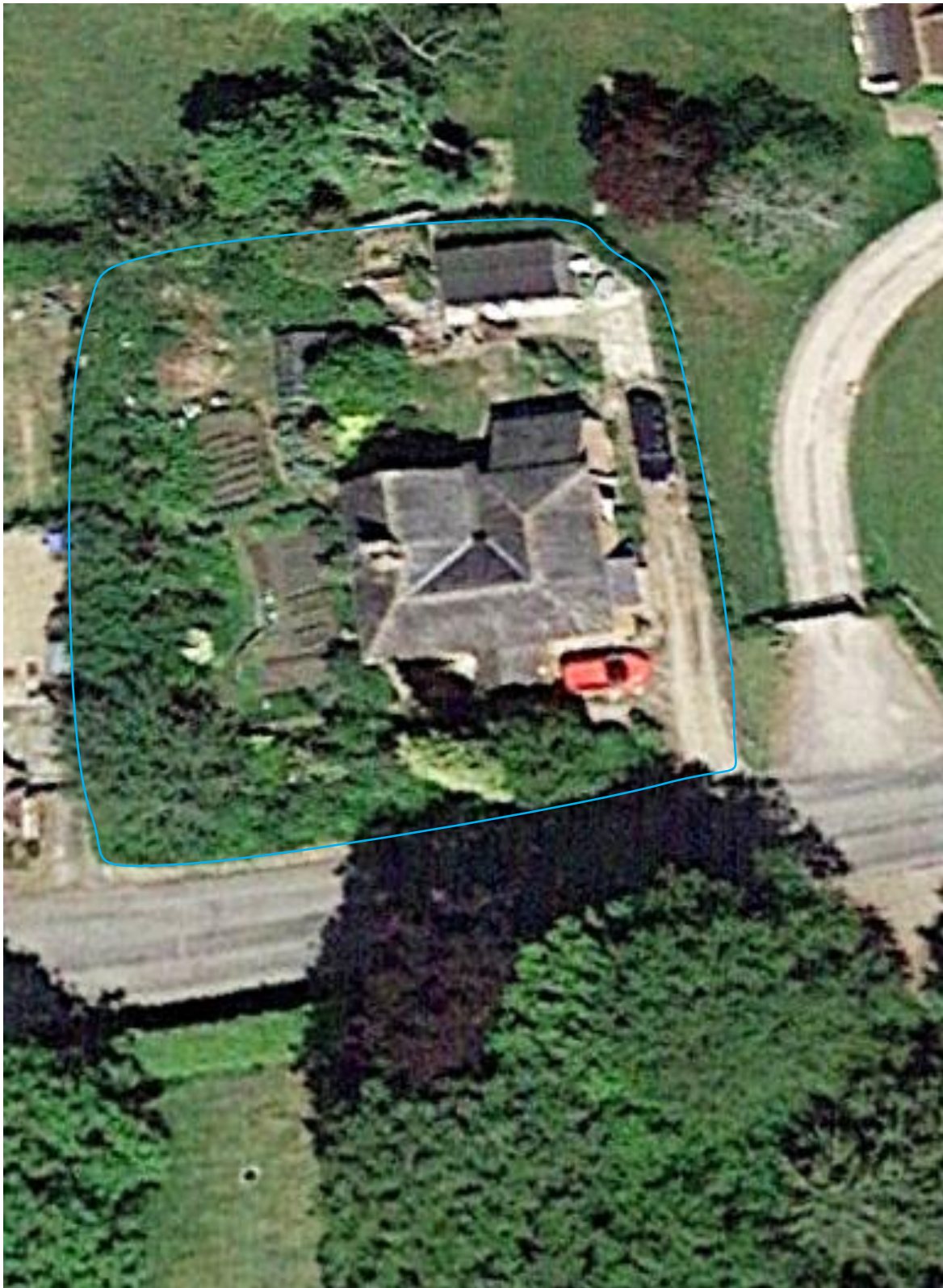
Map 8. Beech House, Middle Claydon. MK18 2EU.





Map 9. The Circle Centre, Middle Claydon. MK18 2ET.

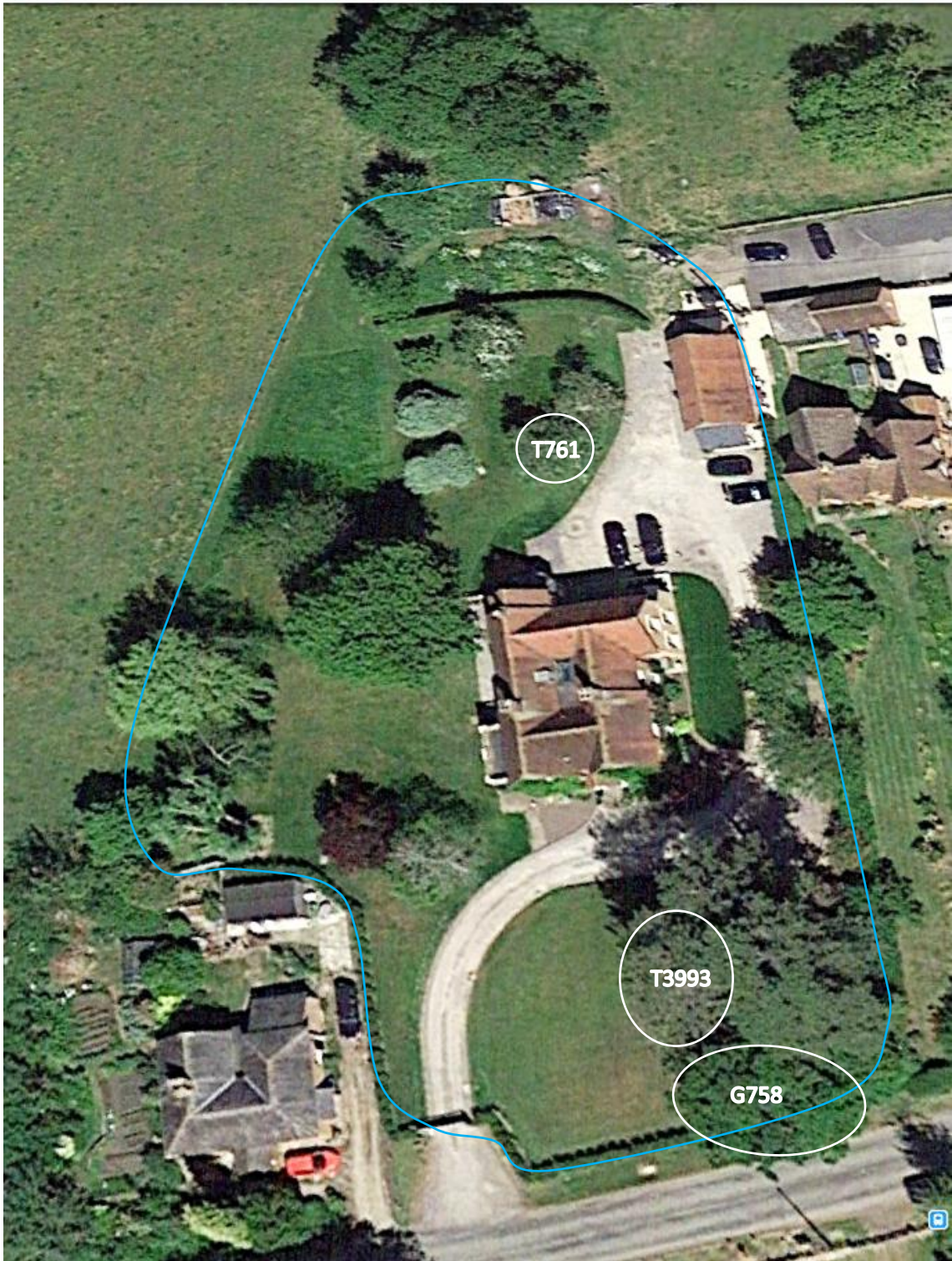




Map 10. Rosedene, Middle Claydon. MK18 2ET

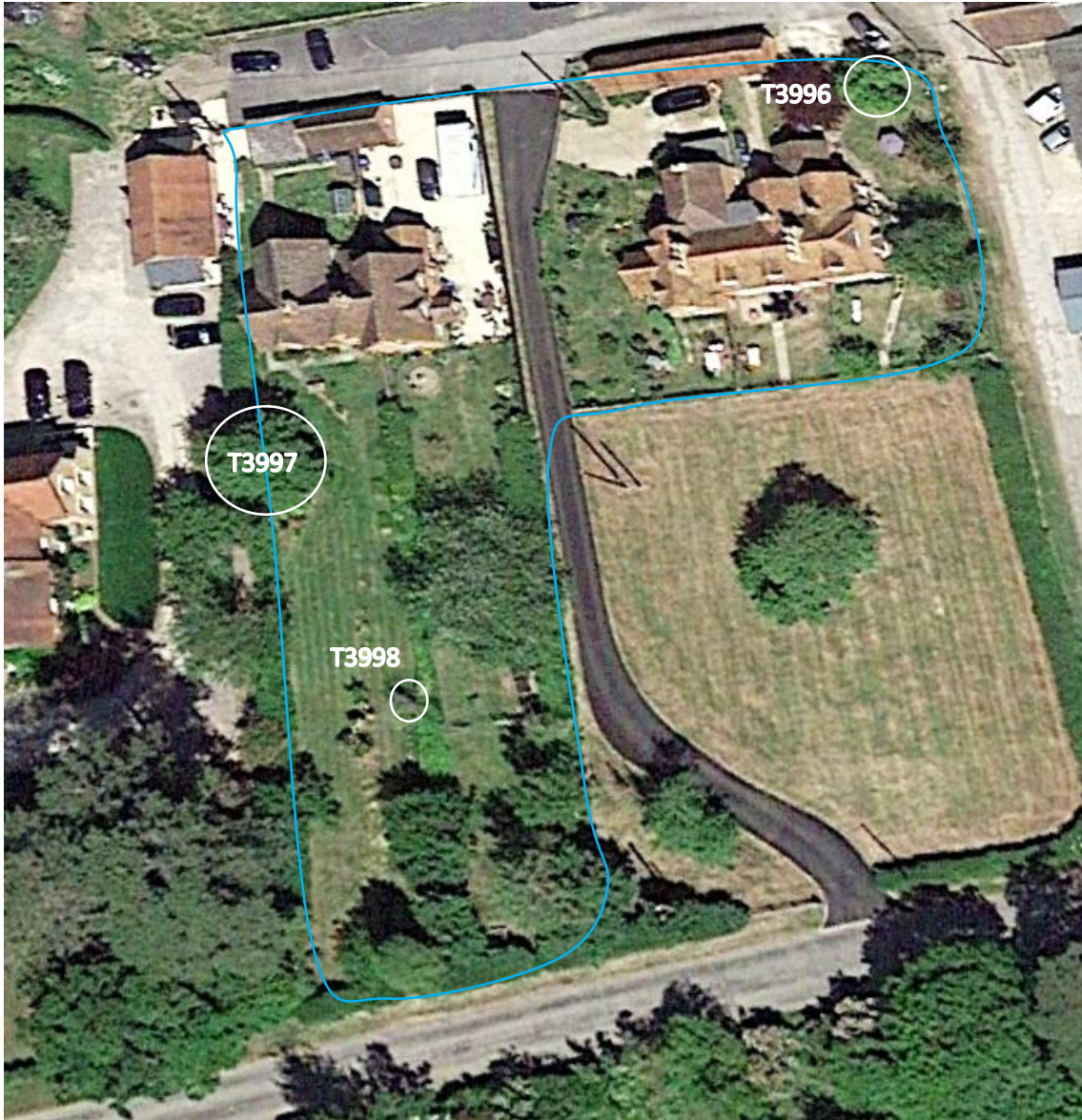
**No significant defects.**





Map 11. Ballams, Middle Claydon. MK18 2ET





Map 12. Townsend Cottages, Middle Claydon. MK18 2ET





Map 13. Mount Pleasant Farm, Middle Claydon. MK18 2LE





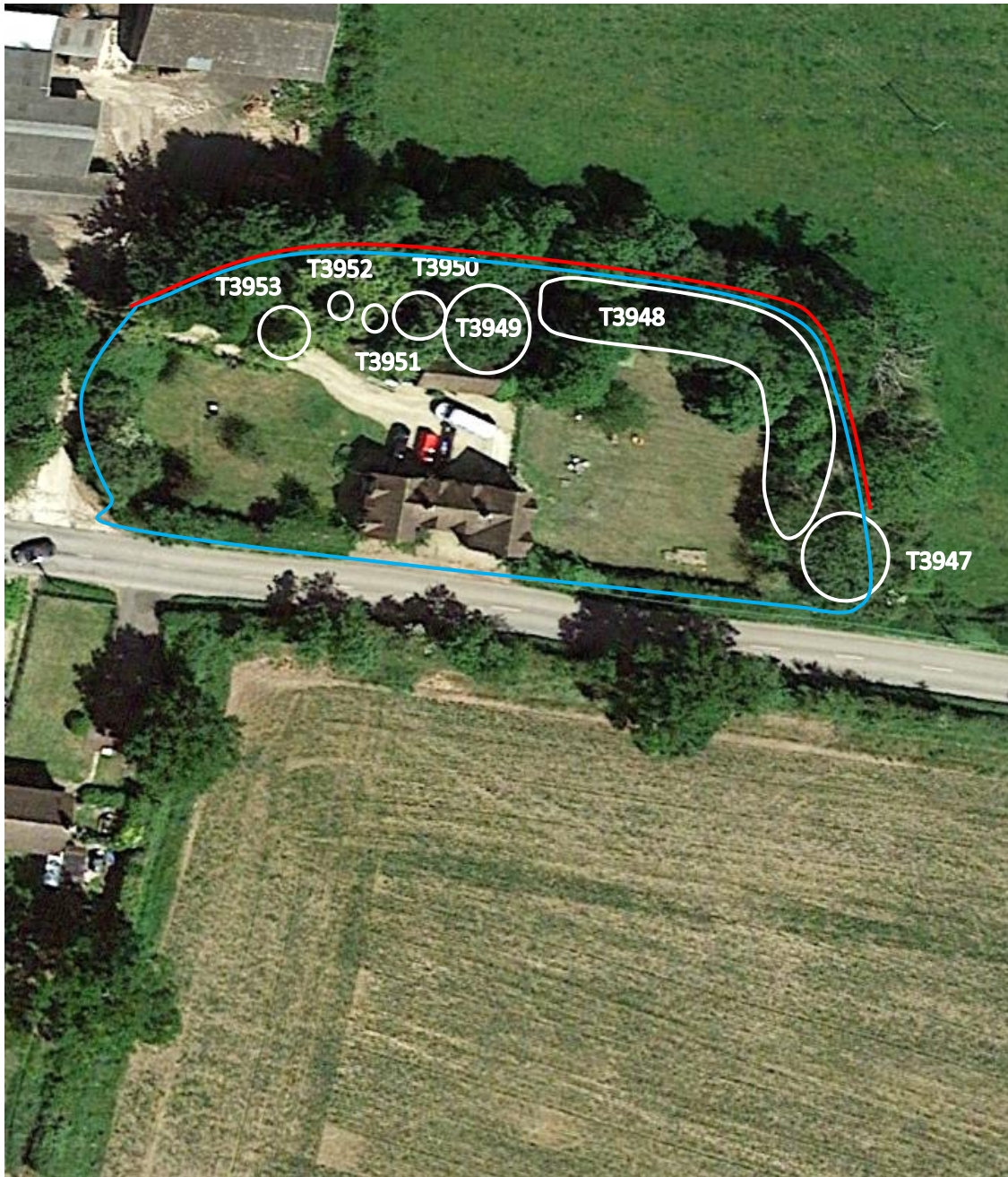
Map 14. Verney Junction. **No significant defects present.**





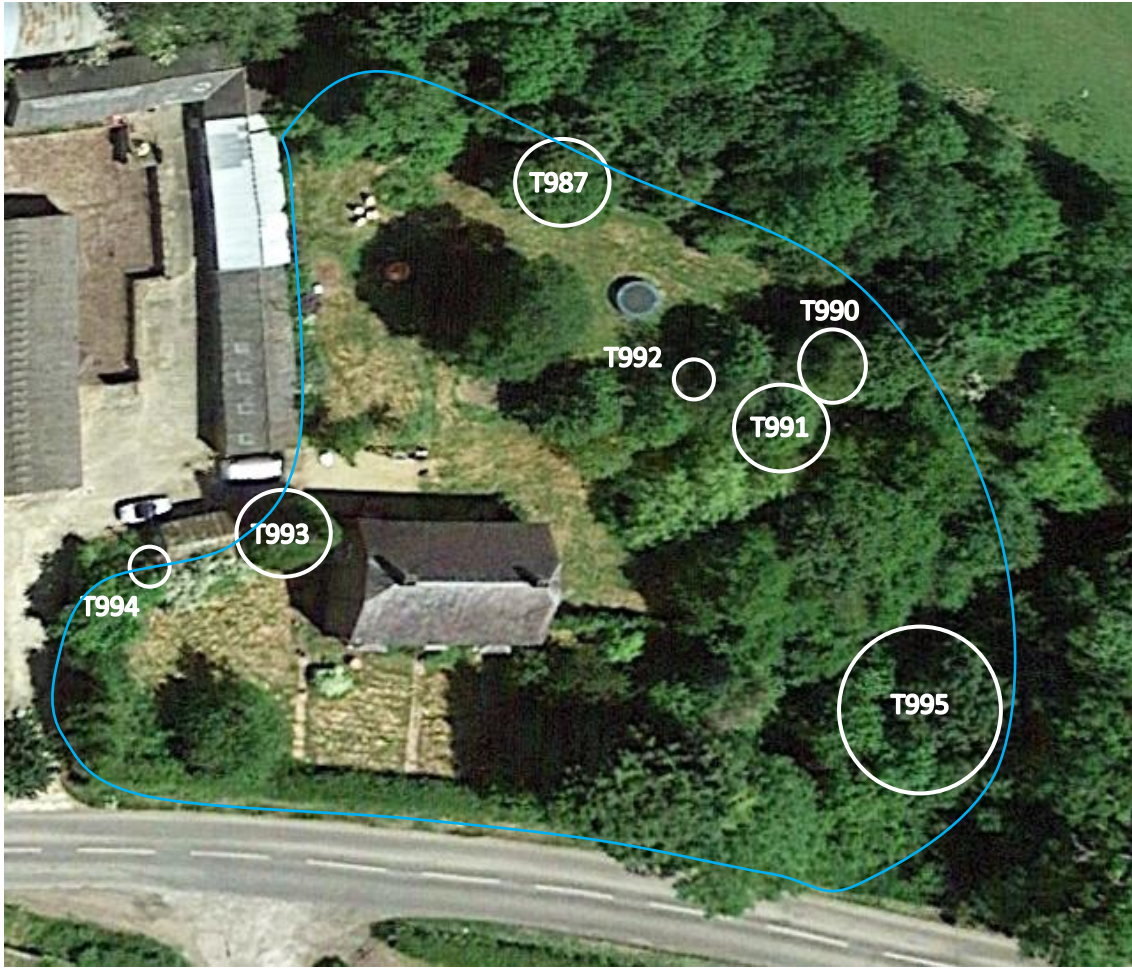
Map 15. Pond Farmhouse, The Old Dairy, Granary Cottage at Pond Farm, Calvert Road, Steeple Claydon. MK18 2HD





Map 16. Blackmorehill Farm Cottages, Calvert Road, Middle Claydon. MK18 2HA





Map 17. Catherine Farmhouse, Calvert Road, Middle Claydon. MK18 2EZ

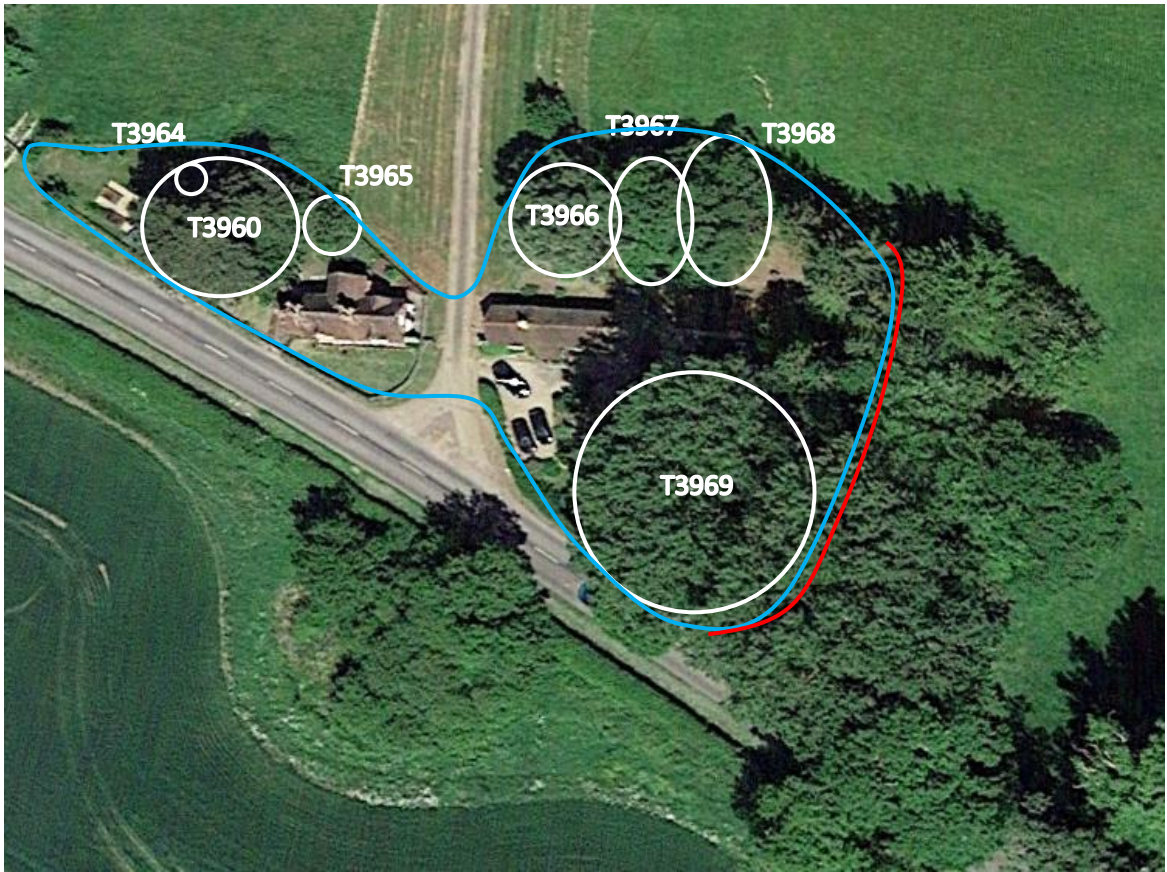


Map 18. Knowlhill Farm, Calvert Road, Steeple Claydon. MK18 2EZ.





Map 19. Finmerehill House, via Knowlhill Farm, Calvert Road. MK18 2EZ



Map 20. No.1 and 2 South Lodge, Claydon House, Middle Claydon. MK18 2EZ





Map 21. No. 12, 14, 16 Orchard Way, Botolph Claydon. MK18 2NG



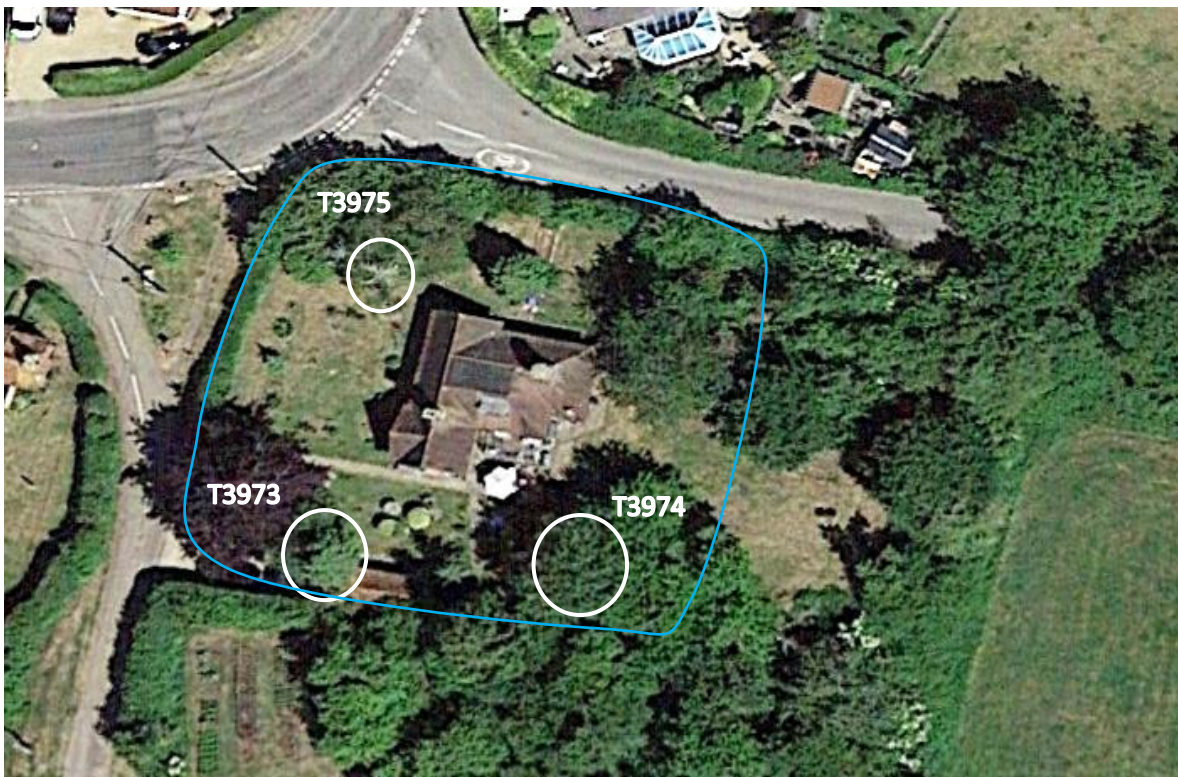
Map 22. No.10 Orchard Way, Botolph Claydon. MK18 2LR

Advised by tenant that there are no trees within the boundary to the rear of the property.



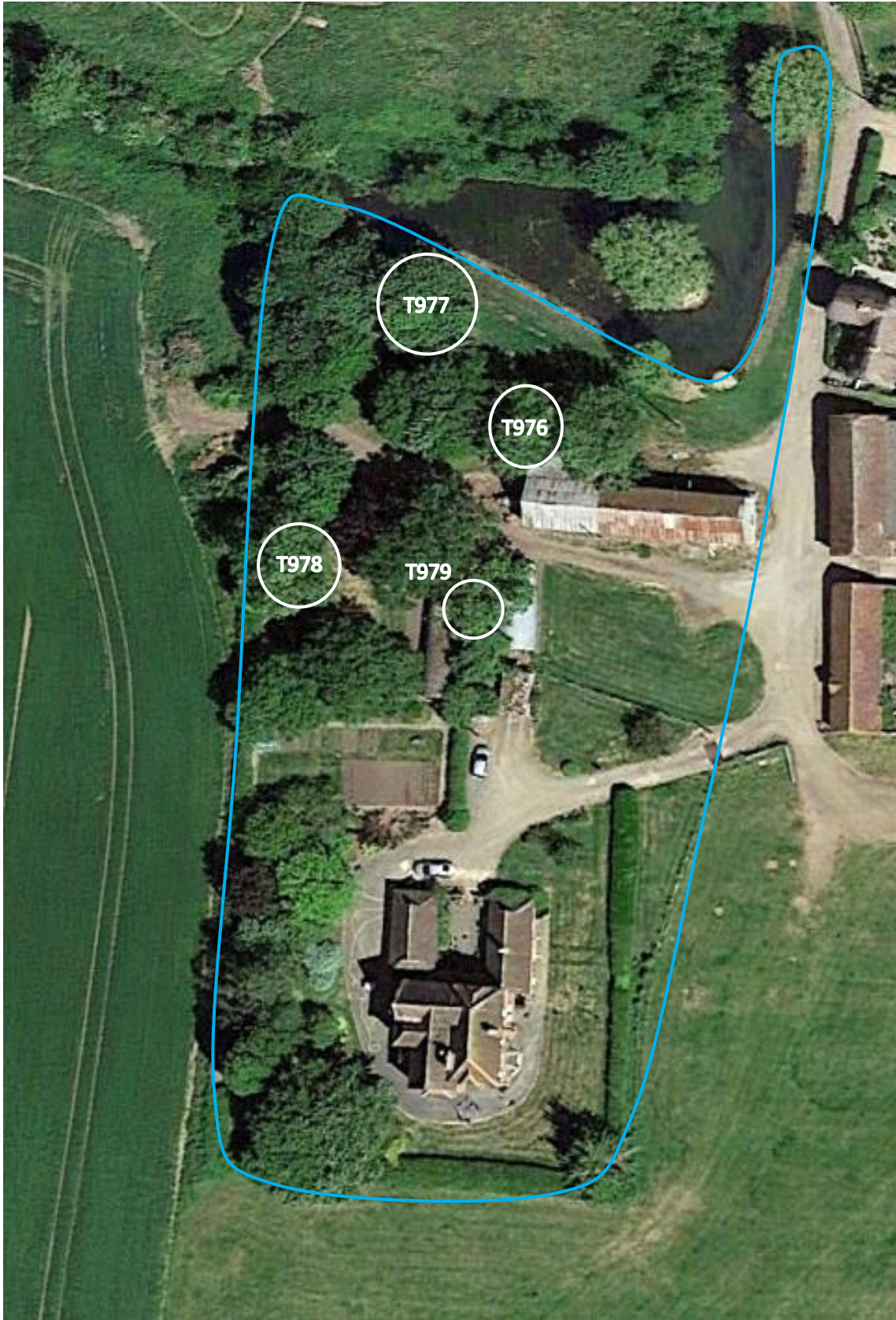


Map 23. No.17 Orchard Way, Botolph Claydon. MK18 2NG



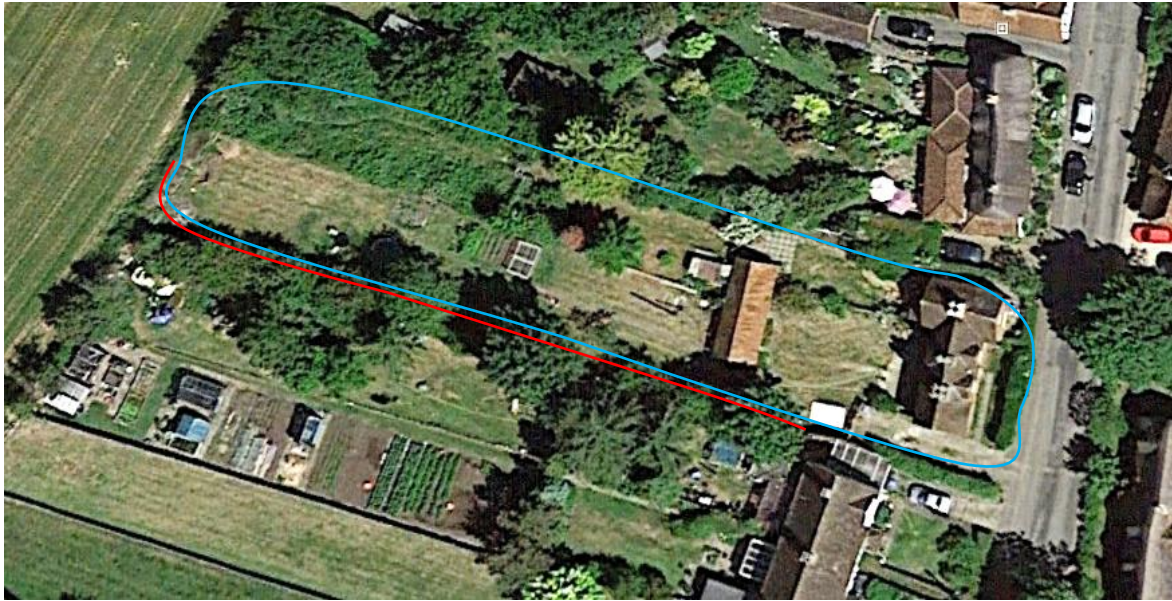
Map 24. Corner House Orchard Way, Botolph Claydon. MK18 2LR





Map 25. Bernwood Farm, Weir Lane, Botolph Claydon. MK18 2NF





Map 26. No. 37 and 39 Botyl Road, Botolph Claydon. MK18 2LR

**No significant defects**

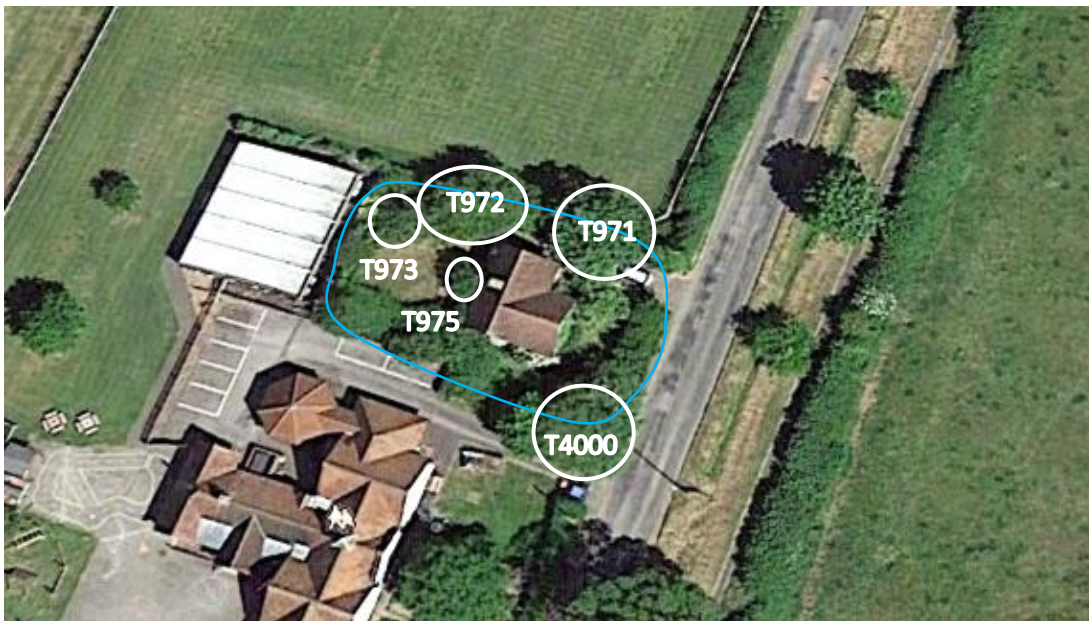


Map 27. No. 63 Botyl Road, Botolph Claydon. MK18 2LR



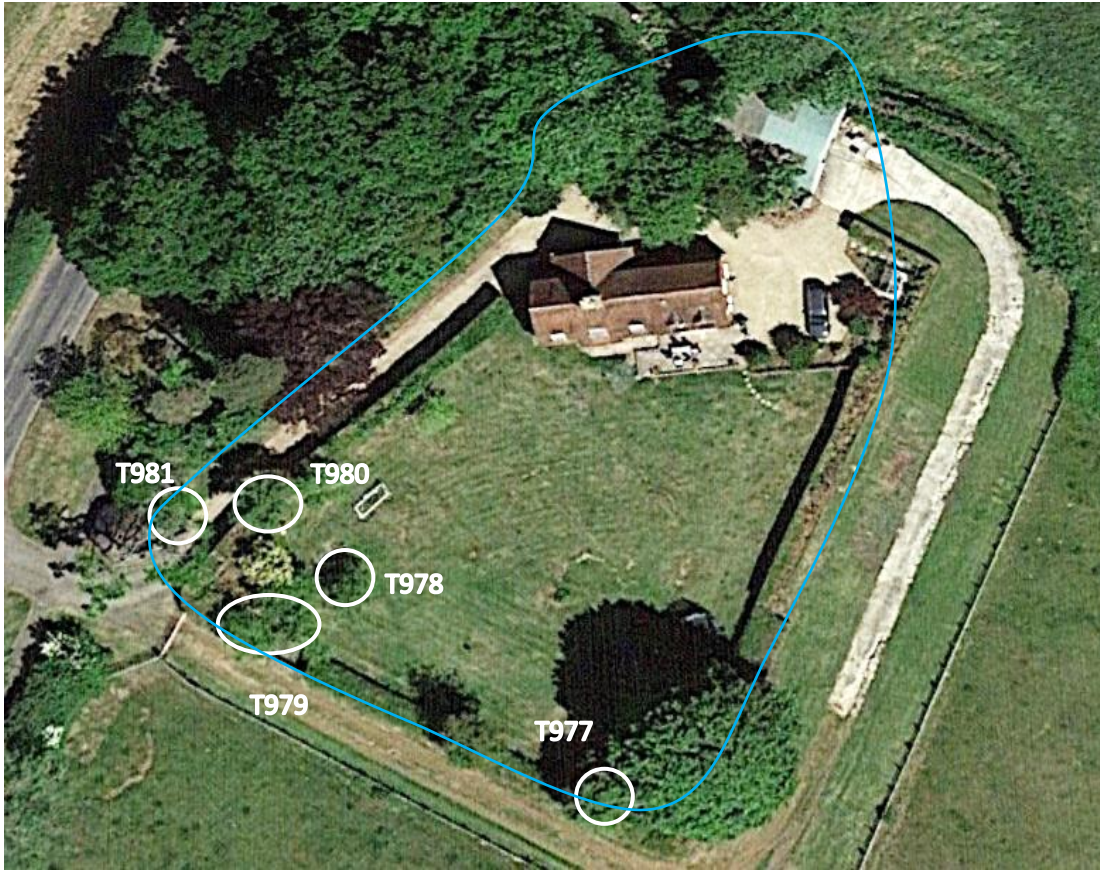


Map 28. Botyl Cottage, Botolph Claydon. MK18 2LR

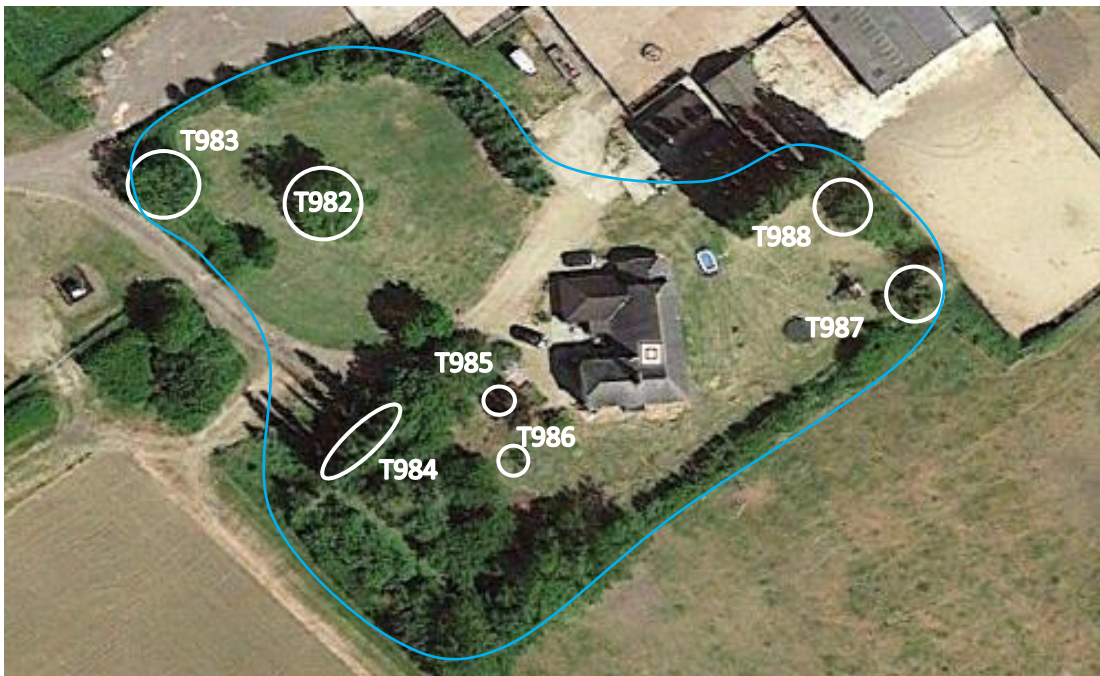


Map 29. The School House, East Claydon. MK18 2LS





Map 30. Ivy Nook, East Claydon. MK18 2LS



Map 31. Sion Hill Farm, East Claydon. MK18 2LR





Map 32. No. 1 and 3 Sandhill Road, 1-4 Briary Court, Sandhill Road, East Claydon. MK18 2LY



Map 33. Monkcombe Cottage, 28 Sandhill Road, East Claydon. MK18 2LY





Map 34. No. 3 Church Way, East Claydon. MK18 2NB

**No Work Required.**



Map 35. Park Cottage, Claydon House, Middle Claydon. MK18 2EX





Map 36. Garden Cottage, Claydon House, Middle Claydon. MK18 2EX **No Significant defects.**



Map 37. Brewery Cottage, Claydon House, Middle Claydon. MK18 2EX **No Significant defects.**