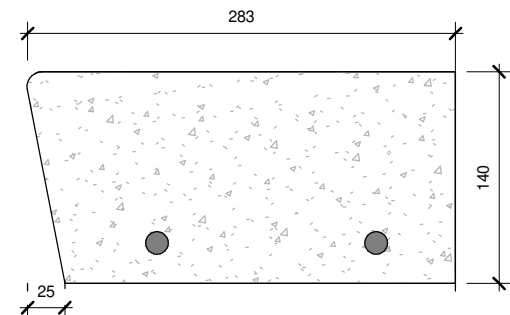


Revision Schedule		
Number	Description	Date

NOTES:  
Handrail & Balusters:  
 40x8mm MS flat bar handrail  
 13x13mm solid MS rod vertical balusters at 100mm max. cts  
 32x32mm solid MS post uprights at 1000mm approximate max. centres  
 Uprights to be welded to 120x120x 10mm MS support plates, bolted to face of landings or steps. 2 No. bolts to each plate with fixing holes to take expanding bolts.  
 All metalwork to be galvanised.  
**900mm high from pitch line handrail to flights**  
**1100mm high balustrade/protective barrier at landing**

NOTES:  
P.C. Concrete Step:  
 Steps (non-slip) -  
 Single Dwellings - 250mm going, 150mm rise and 900mm overall width.  
 Others (more than 1 no.dwelling ) - 250mm going, 150mm rise and 3780mm overall width. (refer to Drg.No.1276-303)  
 Smooth finish to all exposed faces, steps to be cast with reinforcement .  
 Supporting brickwork below the steps to be set back 10mm from the edge of step or edge of the insitu concrete landings.  
 When landings are cast a P.C concrete step is to be set into the flight as a top step on the line of the flight or path.



Section step  
1:5

Section - Handrail  
1:5