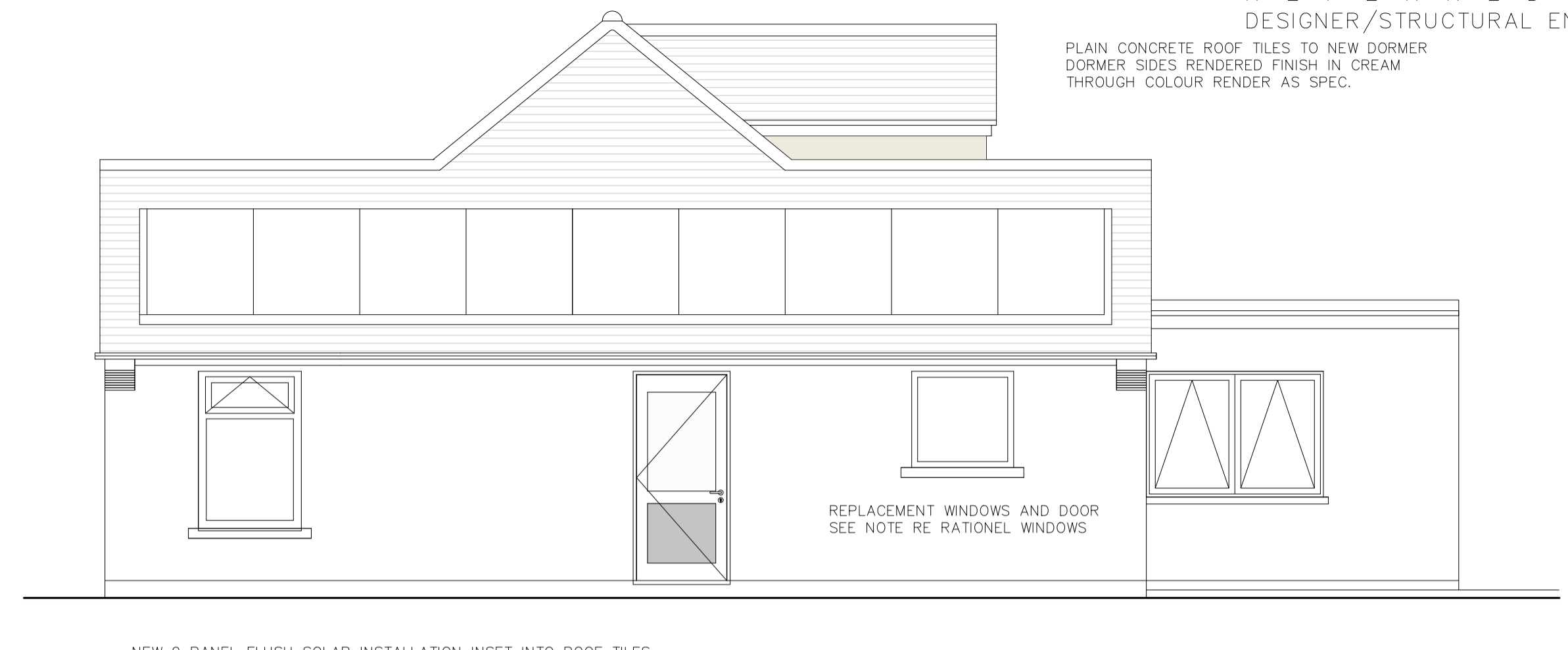


DO NOT SCALE. ALL DIMENSIONS TO BE SITE CHECKED ANY DISCREPANCIES TO BE REFERRED TO DESIGNER/STRUCTURAL ENGINEER



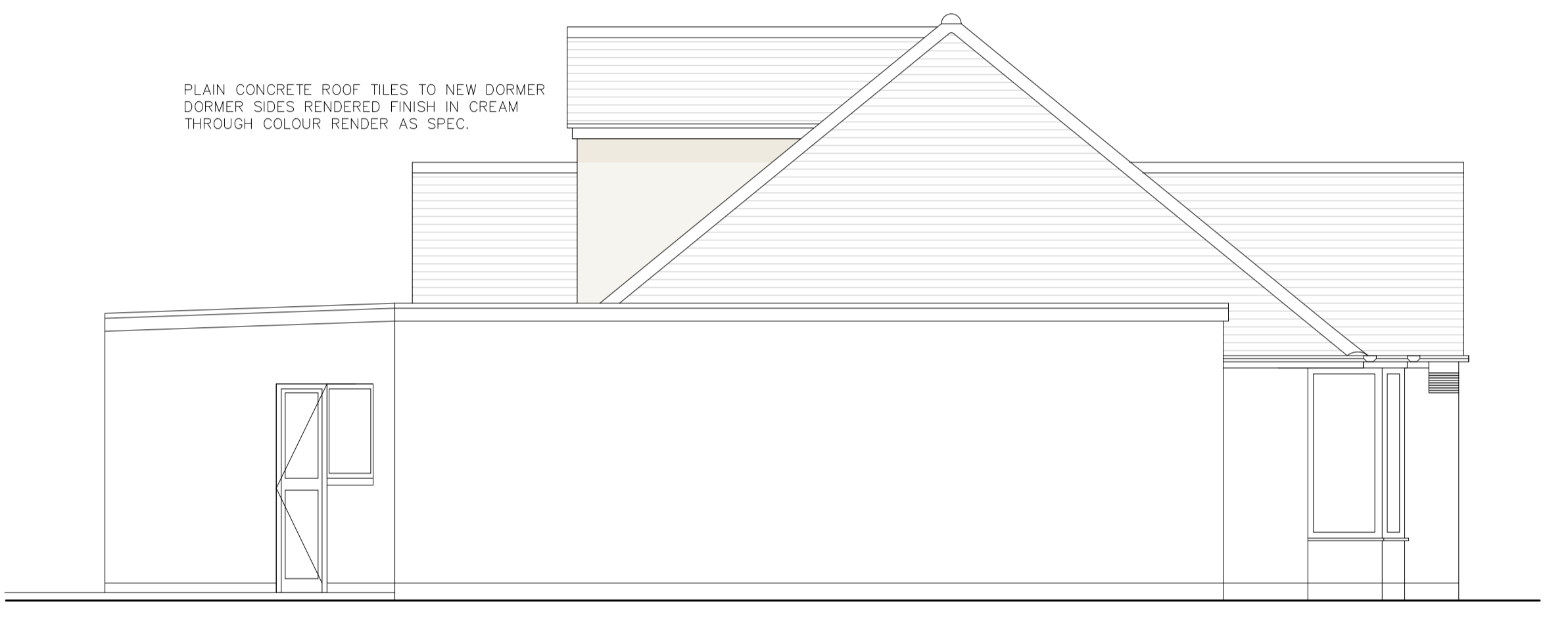
EAST ELEVATION 1:50



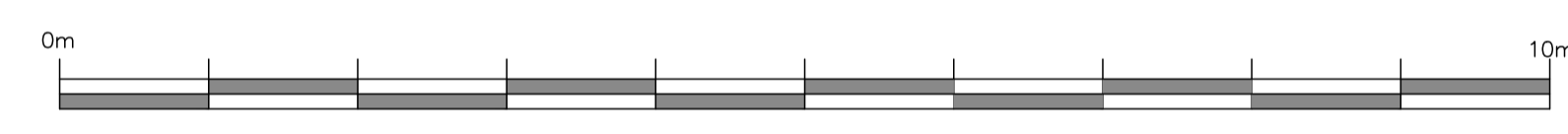
SOUTH ELEVATION 1:50



WEST ELEVATION 1:50



NORTH ELEVATION 1:50



PROPOSED

NOTES:

- THE HOT WATER SYSTEM INCLUDING ANY CISTERN THAT SUPPLIES WATER TO, OR RECEIVES EXPANSION WATER FROM THE HOT WATER SYSTEM SHOULD CONTINUE TO SAFELY CONTAIN THE HOT WATER, TO SHOW COMPLIANCE WITH REQUIREMENT G3 2010 EDITION:
- a. DURING NORMAL OPERATION OF THE HOT WATER SYSTEM;
  - b. FOLLOWING FAILURE OF ANY THERMOSTAT USED TO CONTROL TEMPERATURE; AND
  - c. DURING OPERATION OF ANY SAFETY DEVICES FITTED IN ACCORDANCE WITH PARAGRAPH G3 (3).
- ANY UNVENTED HOT WATER STORAGE SYSTEM UP TO 500 LITRES CAPACITY AND 45KW POWER INPUT, MUST SHOW COMPLIANCE WITH REQUIREMENT G3 2010 EDITION:
- a. THE STORAGE VESSEL HAS AT LEAST TWO INDEPENDENT SAFETY DEVICES (A NON-SELF RESETTING ENERGY CUT OUT, AND EITHER A PRESSURE RELIEF VALVE OR A COMBINED TEMPERATURE AND PRESSURE RELIEF VALVE) SUCH AS THOSE THAT RELEASE PRESSURE AND SO PREVENT THE TEMPERATURE OF THE STORED WATER AT ANY TIME EXCEEDING 100 DEGREES IN ADDITION TO ANY THERMOSTAT. DETAILS OF THIS ARE REQUIRED TO BE PROVIDED;
  - b. THE HOT WATER SYSTEM HAS PIPE WORK THAT INCORPORATES A PROVISION FOR THE DISCHARGE TO BE VISIBLE AT SOME POINT AND SAFELY CONVEYS ANY DISCHARGE OF HOT WATER FROM SAFETY DEVICES TO AN APPROPRIATE PLACE OPEN TO THE ATMOSPHERE WHERE IT WILL CAUSE NO DANGER TO PERSONS IN OR ABOUT THE BUILDING. DETAILS OF THIS ARE REQUIRED TO BE PROVIDED;
  - c. THE PROPRIETARY HOT WATER STORAGE SYSTEM UNIT OR PACKAGE NEEDS TO COMPLY WITH AN APPROPRIATE STANDARD SUCH AS BS EN 12897:2006 OR BS 6700:2006 + A1:2009;
  - d. THE HOT WATER STORAGE SYSTEM UNIT OR PACKAGE NEEDS TO BE INDELIBLY MARKED WITH THE FOLLOWING INFORMATION:
    - i. THE MANUFACTURER'S NAME AND CONTACT DETAILS;
    - ii. A MODEL REFERENCE;
    - iii. THE OPERATING PRESSURE OF THE SYSTEM AND THE OPERATING PRESSURE OF THE EXPANSION VALVE;
    - iv. THE OPERATING TEMPERATURE OF THE TEMPERATURE RELIEF VALVE OR THE OPERATING TEMPERATURE AND PRESSURE OF THE COMBINED TEMPERATURE AND PRESSURE RELIEF VALVE;
    - v. THE MAXIMUM PRIMARY CIRCUIT PRESSURE AND FLOW TEMPERATURE OF INDIRECT HOT WATER STORAGE SYSTEM UNITS OR PACKAGES;
    - vi. THERE SHOULD BE A WARNING TO THE USER INDELIBLY MARKED ON THE HOT WATER STORAGE SYSTEM UNIT OR PACKAGE THAT IS VISIBLE AFTER INSTALLATION AS SHOWN IN PARAGRAPH 3.23 OF PART G3.

NEW WORCESTER BOSCH GREENSTAR COMBINATION BOILER INSTALLED IN UTILITY ROOM RADIATORS REPLACED THROUGHOUT

RETAIN EXISTING TILES AND BITUMINOUS FELT. INSTALL NEW 150 X 50 RAFTERS AT 400 C/S (ALONG SIDE EXISTING WHERE NECESSARY & NOTCH OVER EXISTING WALL PLATE AS REQUIRED) AND FIT 100MM KINGSPAN K107 RIGID BOARD CLOSELY BETWEEN THE RAFTERS ENSURING THAT THERE IS A MINIMUM OF 50MM SPACE AT THE TOP OF THE RAFTER. INSULATE USING 100MM KINGSPAN K107 BETWEEN RAFTERS AND FINISH WITH 42.5MM K118 INSULATED PLASTERBOARD, TAPED AND SKIMMED.

TRICKLE VENTILATORS SHALL BE MARKED WITH EITHER PERMANENT OR TEMPORARY MARKINGS SHOWING THE EQUIVALENT FREE VENTILATION AREA OF VENTILATION SO THAT IT CAN BE INSPECTED BY BUILDING CONTROL ON COMPLETION OF THE WORKS.

INFORMATION ABOUT THE BUILDINGS VENTILATION SYSTEMS AND ITS MAINTENANCE REQUIREMENTS WILL BE PROVIDED IN ACCORDANCE WITH THE DOMESTIC VENTILATION COMPLIANCE GUIDE TO THE OWNER, TO SHOW COMPLIANCE WITH REQUIREMENT F1 AND REGULATION 16G.

AIR FLOW TESTING WILL BE CARRIED OUT IN ACCORDANCE WITH THE DOMESTIC VENTILATION COMPLIANCE GUIDE AT COMPLETION OF THE WORKS TO ANY MECHANICAL VENTILATION SYSTEM (INCLUDING EXTRACT SYSTEMS) TO SHOW COMPLIANCE WITH REQUIREMENT F1 AND REGULATION 20AA.

ANY MECHANICAL VENTILATION SYSTEMS (INCLUDING EXTRACT SYSTEMS) WILL BE COMMISSIONED IN ACCORDANCE WITH THE DOMESTIC VENTILATION COMPLIANCE GUIDE AT COMPLETION AND A COPY OF THE 4 CERTIFICATE PROVIDED TO BUILDING CONTROL TO SHOW COMPLIANCE WITH REQUIREMENT F1 AND REGULATION 20C.

SCHEDULE OF THE TEST EQUIPMENT AND DATE OF LAST UKAS CALIBRATION TO ACCOMPANY COMMISSIONING PAPERWORK.

NEW WASTES TO SINKS, SHOWERS, BATHS & BASINS TO BE 40MM WITH 75MM DEEP SEAL TRAPS (SHOWERS MAY BE FITTED WITH PROPRIETARY 90MM FAST FLOW TRAPS AS NECESSARY), CONNECTED TO 50MM PIPE WORK WITH RODDING ACCESS AT ALL BENDS AND CONNECTIONS. ALL FOR CONNECTION TO NEW & EXISTING SVP'S - WASHING MACHINE AND DISHWASHER TO DISCHARGE TO PROPRIETARY FITTINGS ON KITCHEN/UTILITY SINK WASTE. ALL WC WASTES TO BE 100MM WITH RODDING ACCESS AT ALL BENDS AND CONNECTIONS. ALL WCs TO BE 4/2.6 LITRE DUAL FLUSH. SEE PLAN FOR SVP POSITIONS. ENSURE SVP TERMINATES WITH MINIMUM 1000MM CLEARANCE TO ALL OPENING WINDOWS (WITHIN 4.000M).

NEW LIGHTWEIGHT PARTITIONS TO BE 100 X 50MM STUDWORK INSULATED WITH 50MM ROCKWOOL ACOUSTIC SLAB AND LINE BOTH SIDES WITH 15MM PLASTERBOARD. TAPE & SKIM. SEAL ALL WALL/FLOOR & WALL/CEILING JUNCTIONS WITH FLEXIBLE SEALANT IN ACCORDANCE WITH PART E BUILDING REGULATIONS. PROVIDES 1/2 HR FIRE RESISTANCE IN ACCORDANCE WITH AD B1. TRIPLE UP JOISTS OR PROVIDE CROSS NOGGINAS AS SPECIFIED BELOW STUD WORK.

ALL SECURITY LOCKS TO WINDOWS AND DOORS SHOULD CONFORM TO PAS 24:2012 AND COMPLY TO AD Q.

NEW WINDOWS AND DOORS SOUTH ELEVATION AND KITCHEN NEW WINDOWS TO KITCHEN, BEDROOM 1, NEW BATHROOM, DORMER AND NEW SLIDING DOOR TO DINING/ENTERTAINMENT AREA.

ALL FROM 'RATIONEL WINDOWS & DOORS' <https://rationel.co.uk/>

AURAPLUS RANGE TRIPLE GLAZED WHITE PAINTED TIMBER INTERNALLY. RAL 7016 ANTHRACITE ALUMINIUM EXTERNALLY.

IF IN DOUBT ASK DO NOT SCALE ALL DIMENSIONS TO BE CHECKED ON SITE BEFORE COMMENCING WORKS ANY DEVIATION OR DISCREPANCY FROM THIS DRAWING TO BE REFERRED TO DESIGNER COPYRIGHT RESERVED

STRUCTURAL ENGINEER'S DETAILS & OR MANUFACTURERS SPECIFICATION MUST READ IN CONJUNCTION WITH PLANS, ANY DEVICES TO BE CHECKED WITH DESIGNER.

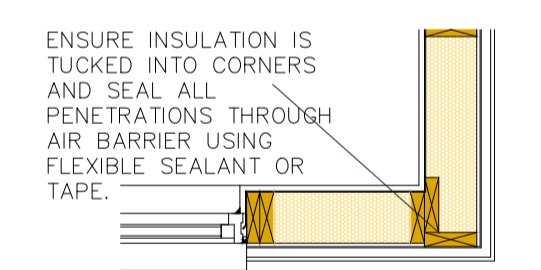
NOTE: SEE STRUCTURAL ENGINEERS INPUT FOR NEW STEELWORK, SPANS AND BEARINGS. STRUCTURAL CALCULATIONS AND DETAILS MUST BE KEPT ON SITE AND READ IN CONJUNCTION WITH DRAWINGS. STRUCTURAL REQUIREMENTS TAKE PRECEDENCE AND ANY DEVIATION BETWEEN DRAWINGS/STRUCTURAL DETAILS OR ACTUAL CONSTRUCTION/STRUCTURAL DETAILS TO BE REFERRED TO DESIGNER FOR CLARIFICATION.

ELECTRICAL INSTALLATIONS ARE TO BE DESIGNED, INSTALLED, INSPECTED AND TESTED IN ACCORDANCE WITH BS 7671:2001. THE WORKS ARE TO BE UNDERTAKEN BY AN INSTALLER REGISTERED UNDER A SUITABLE ELECTRICAL SELF-CERTIFICATION SCHEME, WITH INSTALLATION CERTIFICATE PROVIDED TO BUILDING CONTROL AND CLIENT ON COMPLETION TO SHOW COMPLIANCE WITH AD PART P 2005.

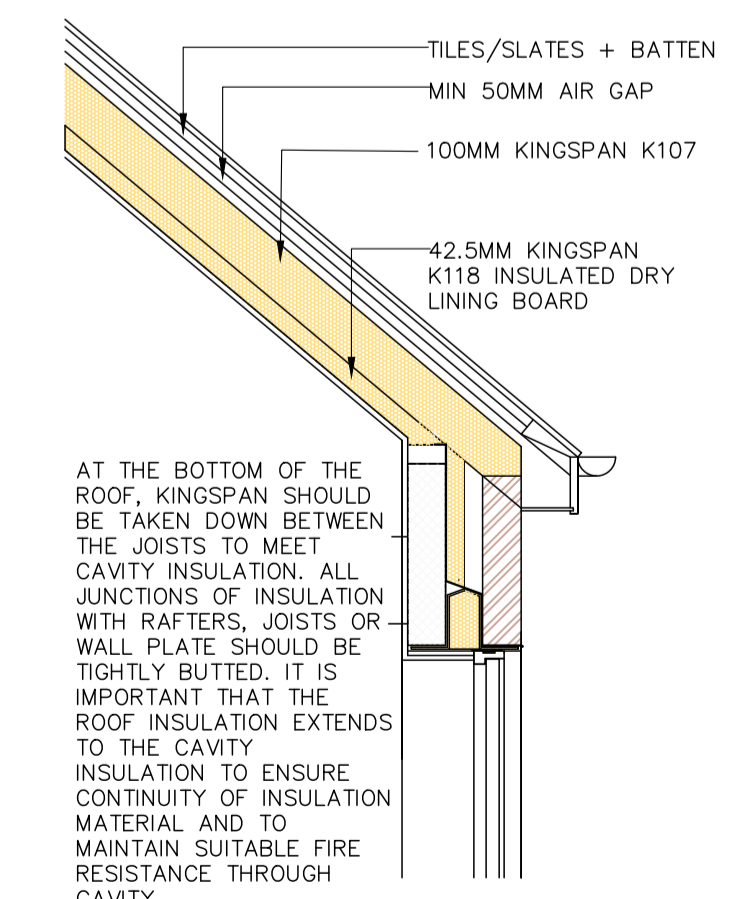
THIS DRAWING MUST BE READ IN CONJUNCTION WITH DESIGN RISK ASSESSMENTS THE CONTRACTOR MUST PREPARE METHOD STATEMENTS FOR SAFE WORKING BEFORE WORKS COMMENCE.

THE DETAILED CONSTRUCTION AND SERVICES ARE NOT SHOWN ON THIS DRAWING. CONTRACTOR TO PLOT FOUND SERVICES ON 'AS BUILT DRAWING'

MATERIALS SHOULD COMPLY WITH APPROPRIATE BRITISH STANDARDS OR AGREEMENT CERTIFICATES. THE MATERIALS SHOULD BE STAMPED, MARKED, INDEPENDENTLY CERTIFIED OR OTHERWISE TO SHOW THEIR SUITABILITY. MATERIALS SHOULD GENERALLY BE IN ACCORDANCE WITH BS8000 SERIES OF DOCUMENTS AND OTHER ACCEPTED GOOD PRACTICE (E.G. QUALITY ASSURED TO ISO 9000).



WALL JUNCTION (ACD: TFW-EW-01) INDICATIVE



WINDOW & DOOR JAMBS (ACD: TFW-WD-03) INDICATIVE

WARM PITCH ROOF - EXTENSION (ACD: MCI-RE-04) INDICATIVE

Matthew Blurton  
 8 Cotswold Crescent  
 Oxford OX3 0SG  
 Tel: 07887 640 574  
 blurton@runbox.com  
 PROJECT:  
 8 Cotswold Crescent, Old Marston,  
 OX2 6AJ  
 Job no: 1129-3C Scale: as  
 shown @ A1L