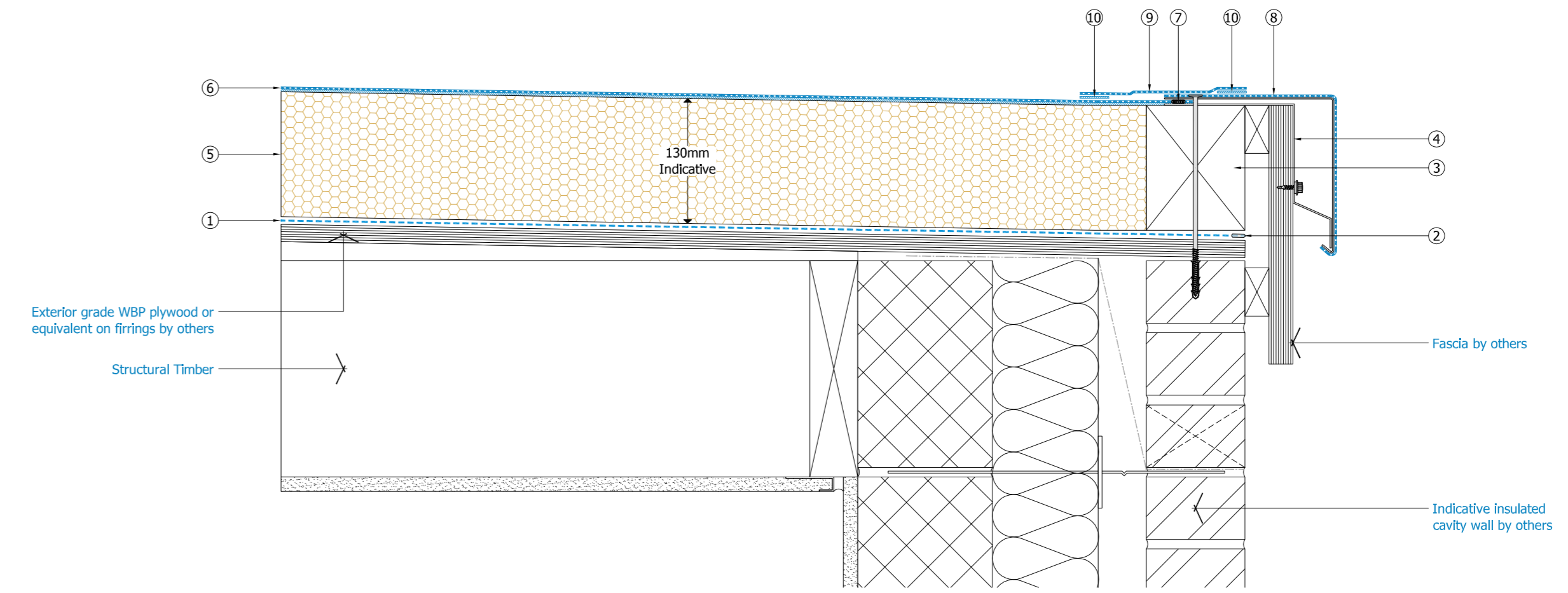


Plan Detail
Scale: 1:5

- ① Sarnavap Air Vapour Control Layer
- ② Air Vapour Control Layer sealed with Sarnavap Jointing Tape
- ③ Mechanically fixed Tanalised Timber Hard Edge
- ④ Mechanically fixed Galvanised Support Bracket
- ⑤ SarnaTherm PIR Insulation [thickness as required to achieve target U-Value]
- ⑥ Fully adhered Sarnafil Membrane
- ⑦ Self adhesive Foam Sealing Strip
- ⑧ Mechanically fixed Sarnametal Roof Trim
- ⑨ Sarnafil Membrane coverstrip
- ⑩ Hot Air Welds



Sarnafil Standard Verge Detail
Scale: NTS

Drawing Status:	CONSTRUCTION	
Project No:		
DWG No:	131A TI	Revision C
Project:		
Drawing Title:	Timber Deck - Warm Roof Fully Adhered Drip Edge	
Scale:	1:5 @ A3	Drawn: MB
Date:	September 2017	
<small>This drawing is the confidential property of CMS Architects and shall not be reproduced in whole or in part, in any form or by any means, without the prior written consent of CMS Architects. It is to be used only for the project for which it is intended. It is to be used in conjunction with the appropriate specifications and contract documents. It is the responsibility of the client to ensure that the design is implemented in accordance with the specifications and contract documents. CMS Architects shall not be liable for any errors or omissions in this drawing or for any consequences arising therefrom. CMS Architects shall not be responsible for any design or construction errors or omissions in this drawing or for any consequences arising therefrom.</small>		
