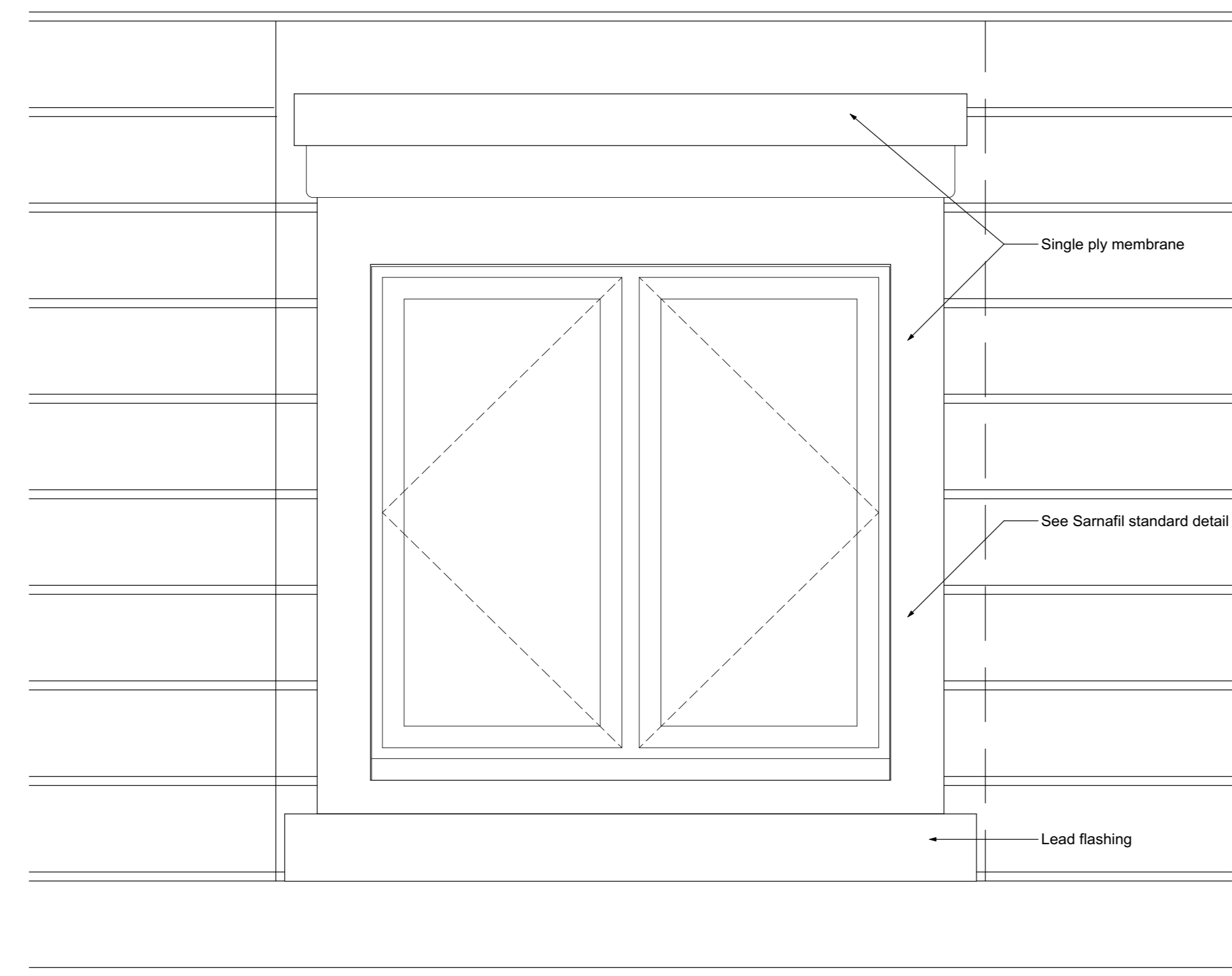


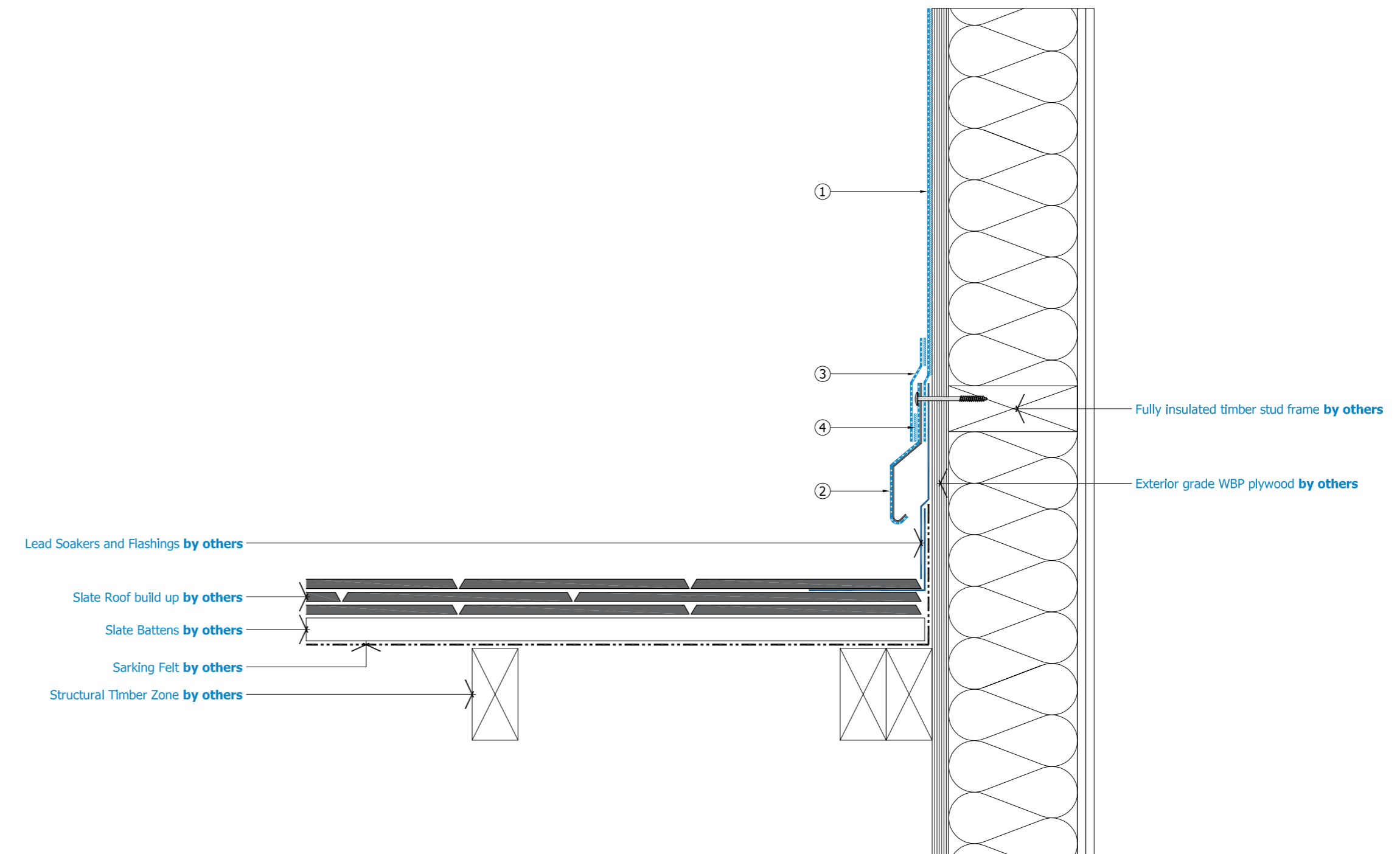
Plan
Scale: 1:10



Elevation
Scale: 1:10

- ① Fully adhered Sarnafil Membrane to dormer cheeks
- ② Sarnametal Drip Flashing mechanically fixed in strict accordance with Sika Sarnafil Specification
- ③ Sarnafil Membrane coverstrip
- ④ Hot Air Welds

Fire Performance - It is wholly the responsibility of the specifier or designer to ensure that the building and suggested Sarnafil specification complies with the relevant National Building Regulations, in particular 'Approved Document Part B Fire safety' and the Building (Scotland) Regulations Technical Handbooks Domestic and Non-domestic. Fire. Sika Limited has conducted extensive testing of its systems to the standards relevant to flat roofing, BS476-Part 3 and BS EN 13501/CEN TS1187 BROOF 14 and makes available all the test reports. Particular attention should however be paid to steep sloped and vertical wall areas where Sarnafil may be considered. Guidance can be found in the National Building Regulations, which are available online.



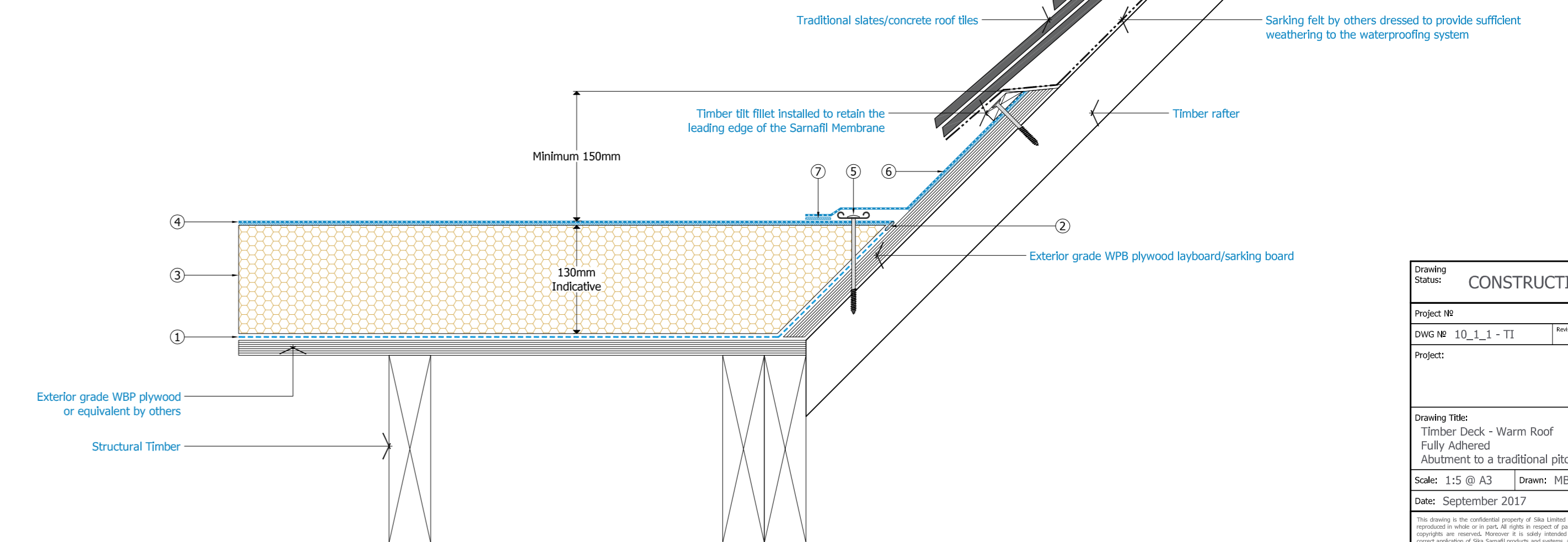
Sarnafil Standard Dormer Cheek Detail
Scale: NTS

| | |
|-----------------|--|
| Drawing Status: | CONSTRUCTION |
| Project No: | |
| DWG No: | 10_2_1 - T1 |
| Revision: | B |
| Project: | |
| Drawing Title: | Timber Deck Fully Adhered Dormer Cheek |
| Scale: | 1:5 @ A3 |
| Drawn: | MB |
| Date: | September 2017 |

This drawing is the confidential property of Sika Limited and must not be reproduced or used in any form without the prior written consent of Sika Limited. Sika Limited is not responsible for any errors or omissions in this drawing and its use. Sika Limited is not responsible for any damage or injury resulting from the use of this drawing. Sika Limited is not responsible for any damage or injury resulting from the use of this drawing.



- ① Sarnavap Air Vapour Control Layer
- ② Air Vapour Control Layer sealed with Sarnavap Jointing Tape
- ③ SarnaTherm PIR Insulation [thickness as required to achieve target U-Value]
- ④ Fully adhered Sarnafil Membrane to field areas
- ⑤ Mechanically fixed Sarnafil Peel Stop
- ⑥ Fully adhered Sarnafil Membrane
- ⑦ Hot Air Welds



Sarnafil Standard Roof Abutment Detail
Scale: NTS

| | |
|-----------------|--|
| Drawing Status: | CONSTRUCTION |
| Project No: | |
| DWG No: | 10_1_1 - T1 |
| Revision: | B |
| Project: | |
| Drawing Title: | Timber Deck - Warm Roof Fully Adhered Abutment to a traditional pitched roof |
| Scale: | 1:5 @ A3 |
| Drawn: | MB |
| Date: | September 2017 |

This drawing is the confidential property of Sika Limited and must not be reproduced or used in any form without the prior written consent of Sika Limited. Sika Limited is not responsible for any errors or omissions in this drawing and its use. Sika Limited is not responsible for any damage or injury resulting from the use of this drawing. Sika Limited is not responsible for any damage or injury resulting from the use of this drawing.



| | | | |
|-----|------------|-------|---------------------|
| No. | Date | DR/CH | Revision Notes |
| A | 17/11/2020 | | Dormer size amended |

Project Title
The Red Lion PH
Project Client
Vertex Property Limited
Suitability
Code Description
-

Sheet Scale
1: @ A1
Date
2020/11/30
Drawn By
BC
Reviewed By
PR

Copyright. Check all dimensions on site. Do not scale this drawing. This drawing is only to be used on the site for which designed.

Sheet No.
Project ID - Designer - Volume - Level - Type - Revision Number
1872-CMS- XX - 00-DR-A-2002
Sheet Title
Dormer Details 2 of 3

Rev
A



26 Martingale, Corsham, Wiltshire, SN13 0HL, UK. Web: www.cms-group.co.uk. Tel: 01249 701333