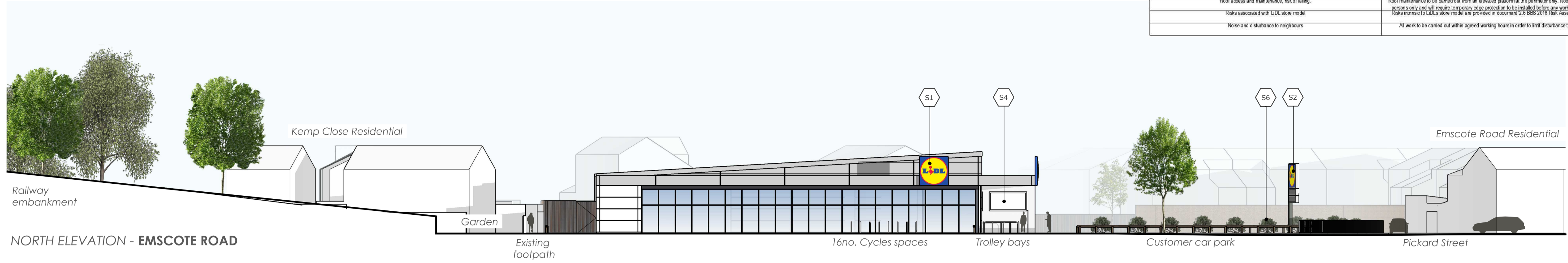


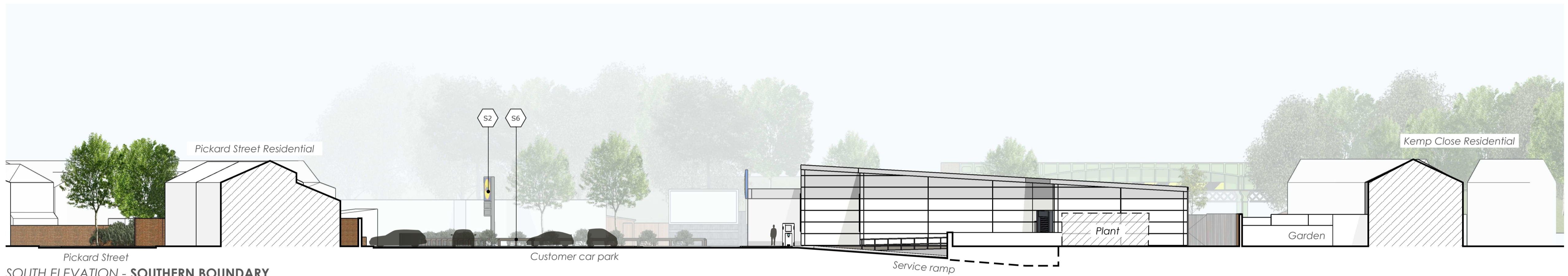
Hazard Warning Schedule	
HAZARD	COMMENTS / ACTION
Existing Services	Relevant authorities to be consulted prior to commencement of works to determine approximate location and extent of existing services. Locations to be confirmed on site by trained persons.
Risk of collapse	Contractor to plan and manage any works to existing embankments/retaining structures to prevent risk to others.
Access	Confirmation of prior removal of obstructions from site to be obtained and site survey to be carried out by trained persons if necessary.
Falling from height	All work at height to be carried out by trained persons only and in accordance with a pre-prepared method statement.
Service vehicles operating within the public car park	Operator to be aware of conflict between pedestrians and HGV's and ensure safe operation.
Roof access and maintenance, risk of falling	Roof maintenance to be carried out from an elevated platform at the perimeter only. Roof access by trained persons only and all require temporary edge protection to be installed before any works are carried out.
Risks associated with LIDL store model	Risks intrinsic to LIDL's store model are provided in document '2.5 BBS 2018 RMR Assessment Register'
Noise and disturbance to neighbours	All work to be carried out within agreed working hours in order to limit disturbance to neighbours.

© Whittam Cox Architects - Disclaimer:

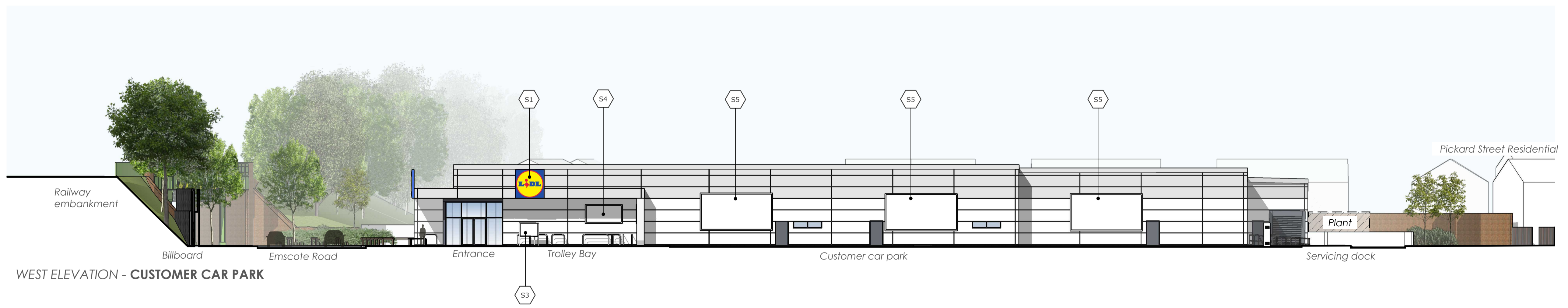
This drawing is copyright of WCCG Group Ltd trading as Whittam Cox Architects, and shall not be reproduced nor used for any other purpose without the written permission of the Architects. This drawing must be read in conjunction with all other related drawings and documentation. It is the contractor's responsibility to ensure full compliance with the Building Regulations. Do not scale from this drawing, use figured dimensions only. It is the contractor's responsibility to check and verify all dimensions on site. Any discrepancies to be reported immediately. IF IN DOUBT ASK. Materials not in conformity with relevant British or European Standards/Codes of practice or materials known to be deleterious to health & safety must not be used or specified on this project.



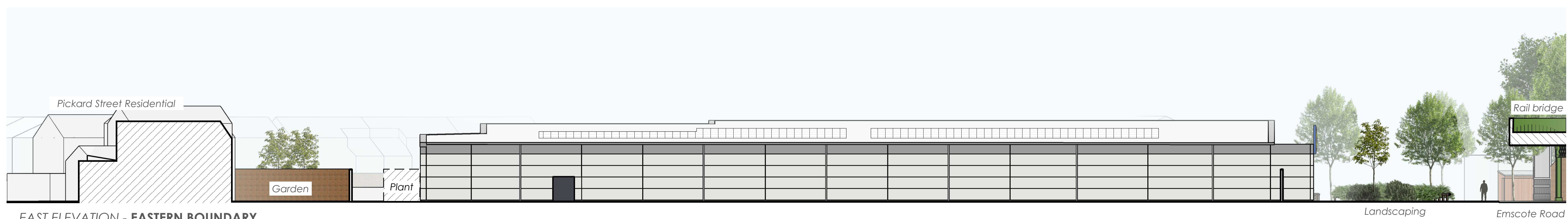
NORTH ELEVATION - EMSCOTE ROAD



SOUTH ELEVATION - SOUTHERN BOUNDARY



WEST ELEVATION - CUSTOMER CAR PARK



EAST ELEVATION - EASTERN BOUNDARY

KEY	
S1	Large canopy mounted illuminated 'LIDL' logo sign (2500x2500mm)
S2	Totem flag pole illuminated 'Lidl' logo sign (2100x2100mm)
S3	Illuminated poster display unit (1170x1700mm)
S4	Wall mounted billboard (3245x1640mm)
S5	Wall mounted billboard (6300x3250mm)
S6	Site entrance direction sign (1500x825mm)

For signage details see drawing 'PL_14 - Proposed Signage Details'.

No. / Date / Revision	Drawn / Checkd By	
CLIENT Lidl Great Britain Limited		
PROJECT Warwick Emscote Road		
TITLE Proposed Signage Elevations		
DRAWING STATUS Planning		
DRAWN MD	CHECKED WF	
SCALE 1:200 @ A1		
DATE February 2021		
Whittam Cox ARCHITECTS whittamcox.com		
Chesterfield / 01246 260261 London / 020 3388 0019 Leeds / 01134 682450		
JOB NO. 180534	DRAWING NO. PL-13	REV -