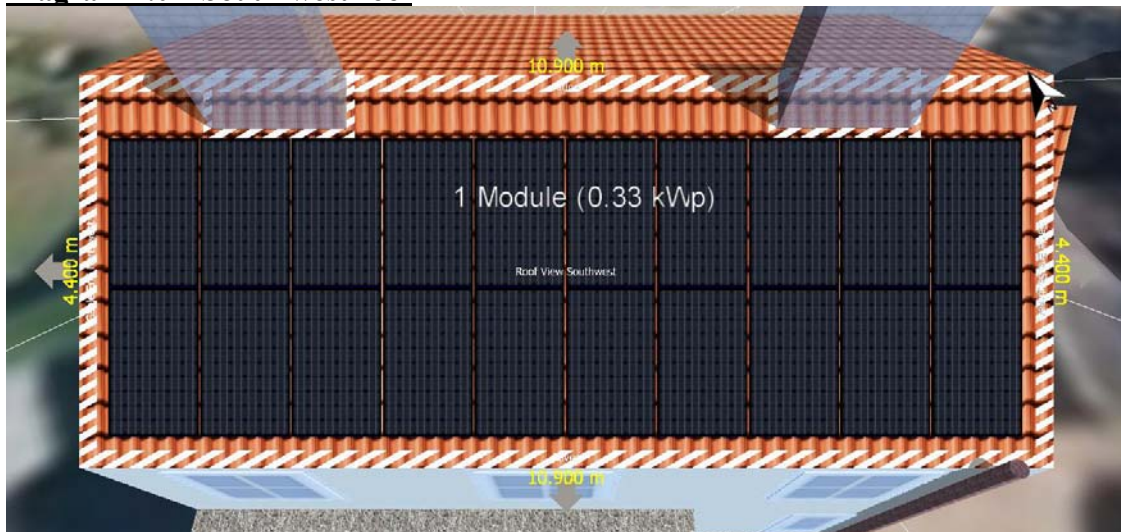


## Proposed Solar PV Design Layout

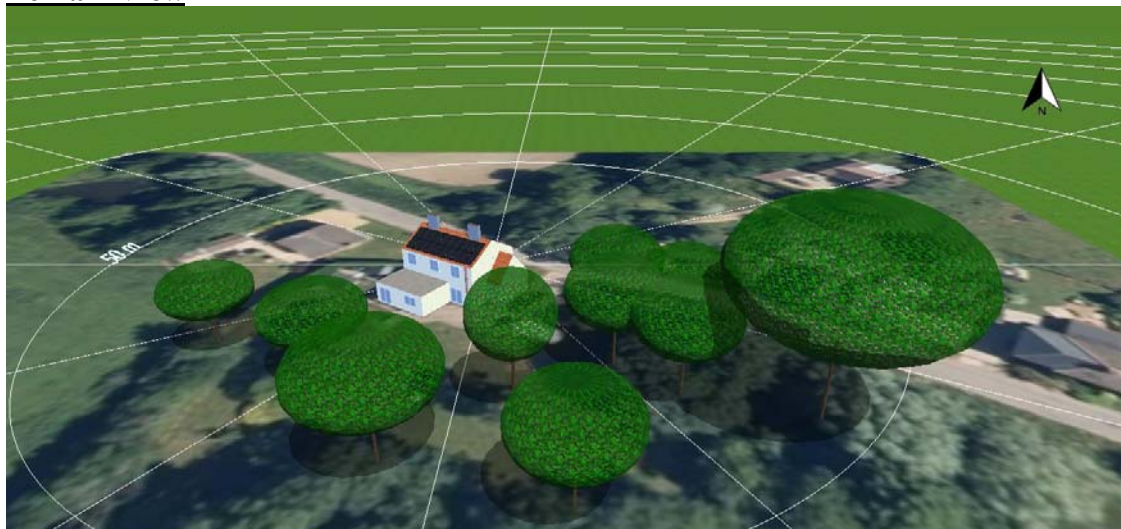
### 6.6kWp Perlight 330W with micros

We propose that your 6.6 kWp solar PV system will consist of 20 PLM-330MB-60 (BLK) (PLM-330MB-60 (BLK)) panels distributed on your south-west roof. Please see diagram 1.0 for the proposed PV layout.

#### Diagram 1.0 – South-west roof



#### Terrain View





**PERLIGHT**  
smart.black

MONOCRYSTALLINE SOLAR MODULE

# PLM-330MB-60

BLACK PLUS SERIES



## PERFORMANCE

Good performance even under low light conditions



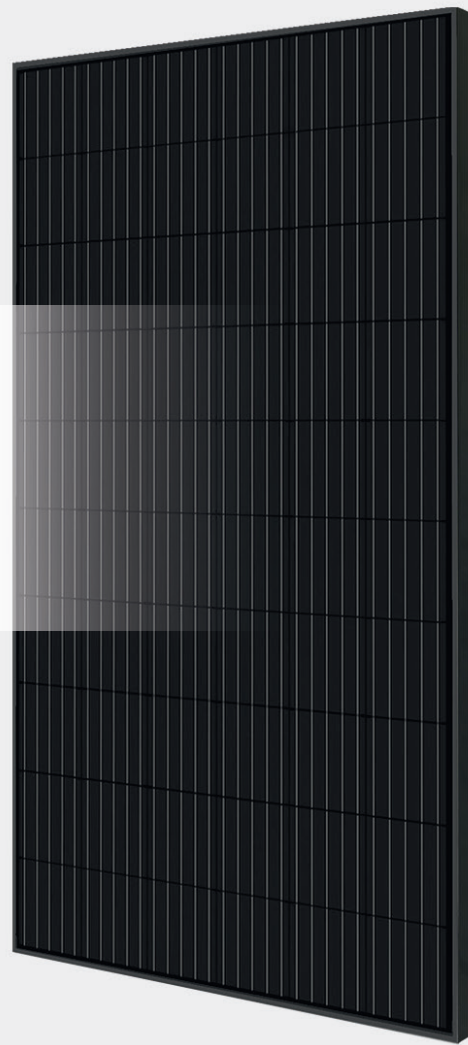
## RELIABILITY

Strict selection of raw materials and strict quality control ensure reliability



## CLASSIC ALL BLACK

Ideal for Residential or Commercial



## PRODUCT OVERVIEW

- ✓ High efficiency
- ✓ PERC technology
- ✓ 5 busbar
- ✓ Excellent low-light performance
- ✓ Clampable on Long & Short sides
- ✓ Extremely reliable screw-less frame
- ✓ Compatible with in-roof systems
- ✓ MCS Certified
- ✓ Worldwide accreditation



**19.78%** MAX MODULE EFFICIENCY  
AFTER INSTALLED

**12** YEARS LIMITED  
PRODUCT WARRANTY

**25** YEARS PERFORMANCE  
WARRANTY



# MONOCRYSTALLINE SOLAR MODULE

# PLM-330MB-60

## BLACK PLUS SERIES



**PERLIGHT**  
smart.black

MODEL TYPE			PLM-330MB-60 BLACK PLUS SERIES		
Power Output	Pmax	W	320	325	330
Voltage at Pmax	Vmpp	V	33.96	34.18	34.32
Current at Pmax	Impp	A	9.42	9.51	9.63
Open-Circuit Voltage	Voc	V	41.12	41.33	41.52
Short-circuit current	Isc	A	9.98	10.11	10.23
Module Efficiency	Eff.	%	19.18	19.48	19.78

STC:1000W/m<sup>2</sup> irradiance, 25°C cell temperature, AM 1.5g spectrum according to EN 60904-3.  
Power measurement uncertainty +/- 5%

### MECHANICAL CHARACTERISTICS

Front cover	3.2mm low-iron tempered glass
Backsheet colour	Black
Type of cells	Monocrystalline Silicon 158.75*158.75
Number of cells	60
Frame	Black Anodised Aluminium
Junction box	IP67
Cables	900mm/4mm <sup>2</sup>
Connectors	MC4 compatible IP67
Module dimensions	1665 x 1002 x 35mm
Module weight	18.5kg

### OPERATING CONDITIONS

Max. system voltage	1000VDC
Limiting reverse current	15A
Operating temperature range	-40°C to 85°C
Max. static load front (e.g., Snow)	5400Pa
Max. static load back (e.g., Wind)	2400Pa
Max. hailstone impact	25mm@23m/s

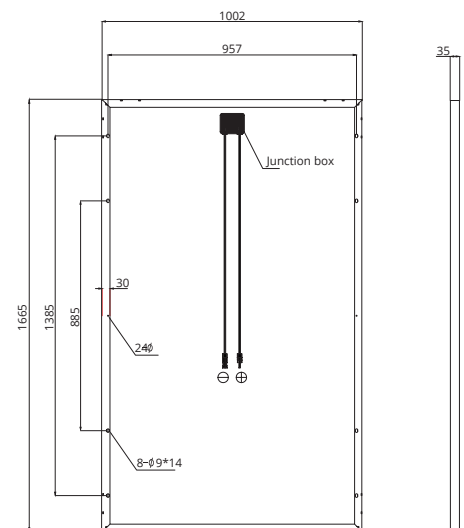
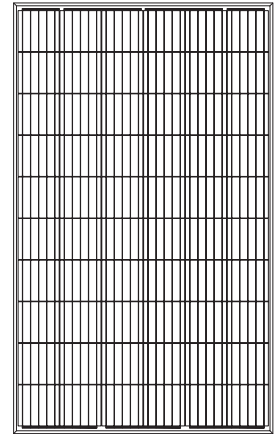
### THERMAL CHARACTERISTICS

NOCT	45±2 °C
Temp. Coefficient Pmax	-0.40 %/°C
Temp. Coefficient Voc	-0.30 %/°C
Temp. Coefficient Isc	0.06 %/°C

### CLAMPING ZONES

Long side	0mm to 410mm from edge
Short side	0mm to 248mm from edge

### MODULE DIAGRAM



### ELECTRICAL CURVES

