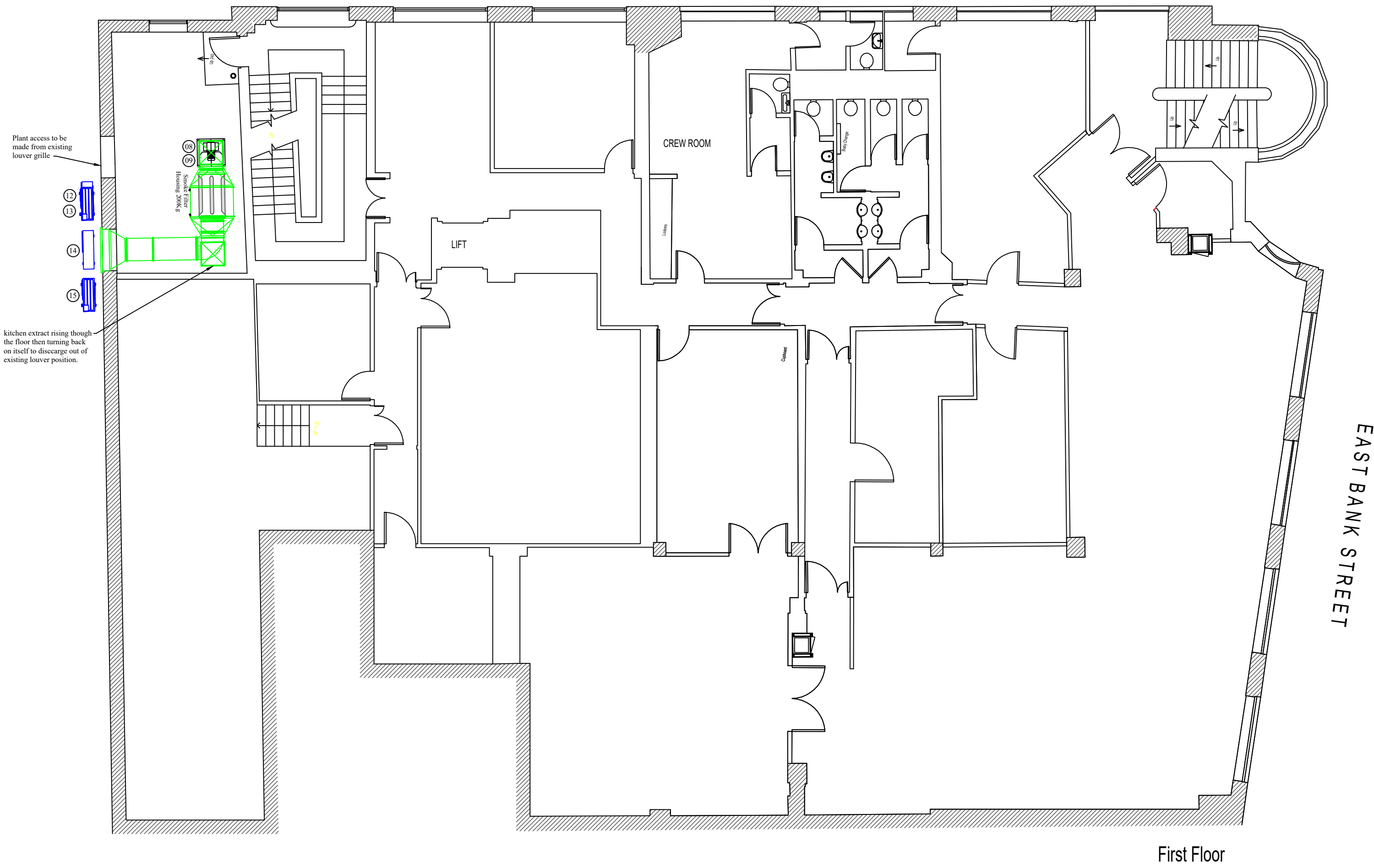


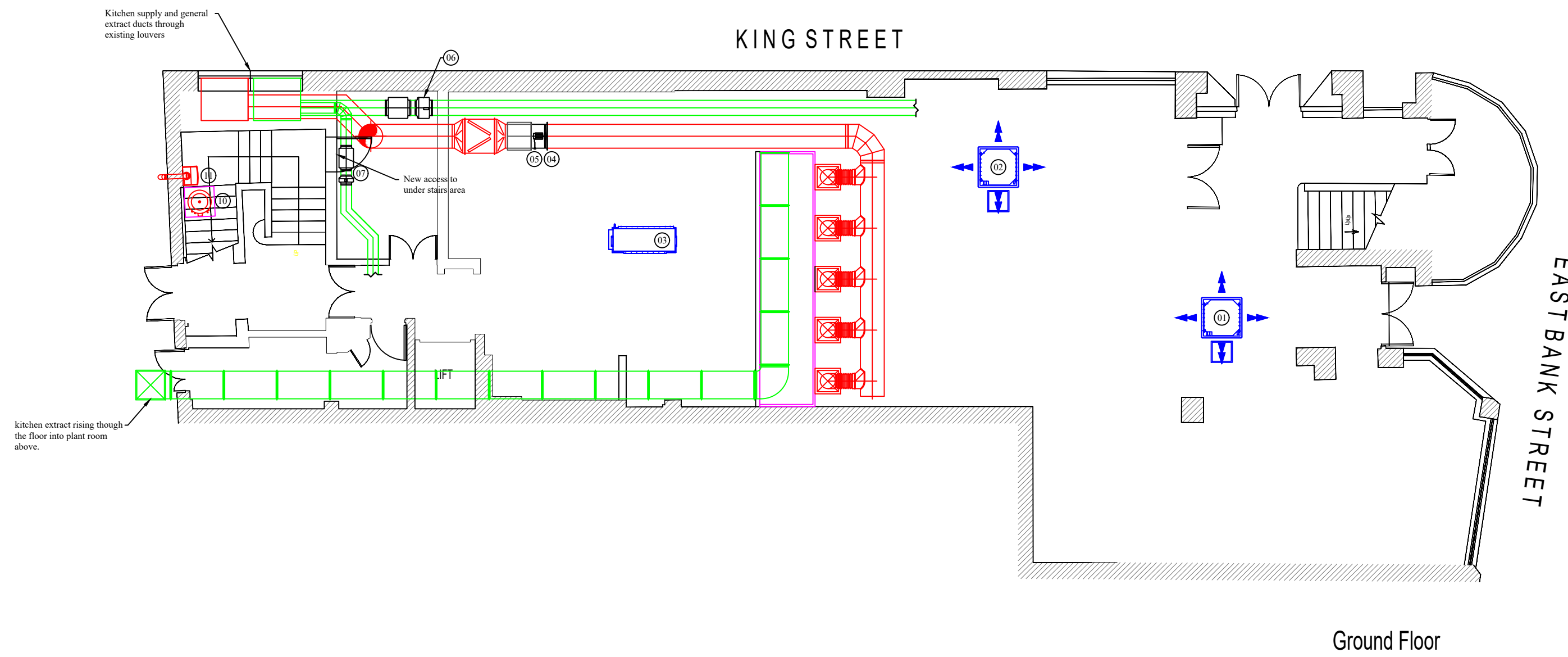
Equipment Schedule

#REF	System	Manufacturer	Model	Electrical supply	Phase	Fuse Rating (amp)	No. of Power Cable Cores	Input Power (Watt)	FLC (amp)	Start Current (amp)	Sound Pressure level dB(A)	Weight (Kg)	No. Interconnecting Cable Cores	CONTROLLER POSITION	COMMENTS
01	CUSTOMER AREA CASSETTE AC	MHI	FDT71VH	220 - 240v, 50Hz	Single	-	-	-	-	-	28@3m	26	3+E (1.5mm)	WITHIN THE ROOM	POWER VIA OUTDOOR
02	CUSTOMER AREA CASSETTE AC	MHI	FDT71VH	220 - 240v, 50Hz	Single	-	-	-	-	-	28@3m	26	3+E (1.5mm)	WITHIN THE ROOM	POWER VIA OUTDOOR
03	KITCHEN / B.O.H DUCTED AC UNIT	MHI	FDU200VG	380 - 415v, 50Hz	3ph	16	5	-	-	-	50@3m	92	3+E (1.5mm)	B.O.H	POWER TO UNIT
04	KITCHEN SUPPLY FAN	FLAKT WOODS	56JM	380 - 415v, 50Hz	3ph	-	5	1320w	6.7	13.5	58@3m	38	-	WITHIN THE KITCHEN	POWER TO FAN
05	SUPPLY AIR PRESSURE SWITCH	-	-	-	-	-	-	-	-	-	-	-	2	WIRED INTO INTERLOCK	screened 2 pair 0.25mm
06	CUSTOMER AREA EXTRACT FAN	ELTA SELECT	SEL355/4-1AC	220 - 240v, 50Hz	Single	13	3	150w	.7	-	45@3m	14	3+E	G/F GLASS WASH	POWER TO CONTROLLER
07	VEG WASH / PREP EXTRACT FAN	ELTA SELECT	HIT200	220 - 240v, 50Hz	Single	-	3	.71	-	53	53	5.5	3	VIA THE LIGHTS	POWER TO FAN
08	KITCHEN EXTRACT FAN	SYSTEMAIR	MUB062 630D4-A2 IE2	380 - 415v, 50Hz	3ph	-	5	4411w	8.12	60.9	68@3m	114	-	WITHIN THE KITCHEN	POWER TO FAN
09	EXTRACT AIR PRESSURE SWITCH	-	-	-	-	-	-	-	-	-	-	-	2	WIRED INTO INTERLOCK	screened 2 pair 0.25mm
10	D.H.W CYLINDER	ALBION	ULTRASTEEL AUI300	2 x 220 - 240v, 50Hz	Single	-	2 x 3	2 x 3000	-	-	-	360	-	N/A	POWER TO UNIT
11	D.H.W BOILER	WORCESTER BOSCH	GREENSTAR 8000 Life 30Kw	220 - 240v, 50Hz	Single	5	3	-	-	-	-	-	-	-	-
12	CUSTOMER AC CONDENSER	MHI	FDC140VSA	380 - 415v, 50Hz	3ph	25	5	2840w	16	5	65@1m	78	-	N/A	POWER TO UNIT
13	WALK IN FREEZER CONDENSER	TBC	-	-	-	-	-	-	-	-	-	-	-	-	-
14	WALK IN FRIDGE CONDENSER	TBC	-	-	-	-	-	-	-	-	-	-	-	-	-
15	KITCHEN & B.O.H DUCTED AC CONDENSER	MHI	FDC200VSA	380 - 415v, 50Hz	3ph	32	5	6590w	24	5	57@1m	122	-	N/A	POWER TO UNIT
16	CUSTOMER AC CONDENSER	MHI	FDC140VSA	380 - 415v, 50Hz	3ph	25	5	2840w	16	5	65@1m	78	-	N/A	POWER TO UNIT

KING STREET



KING STREET



Rev	Date	Description

Client: **GDK**

Job Title: **8 EASTBANK STREET SOUTHPORT PR6 1DW**

Dwg Title: **PROPOSED GROUND AND FIRST FLOOR MECHANICAL LAYOUT PLAN**

Date: 20-04-21 Drawn By: **DB**

Scale: 1:100@A1 Checked By: **-**

Dwg No: **-** Rev: **-**

APL
mechanical services

Abbey Plumbing Ltd
3 Whitehills Drive
Whitehills Business Park
Blackpool, FY4 5LW
Tel: 01253 698 159
Email: admin@aplmechanical.co.uk