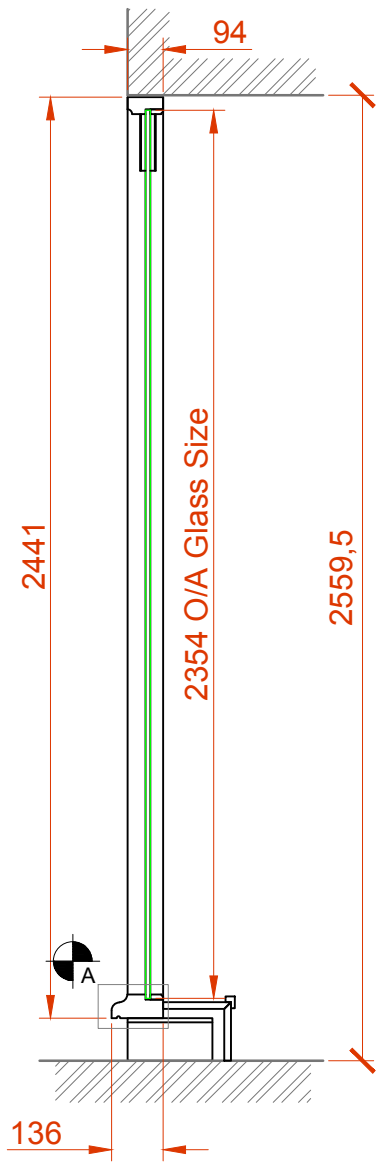
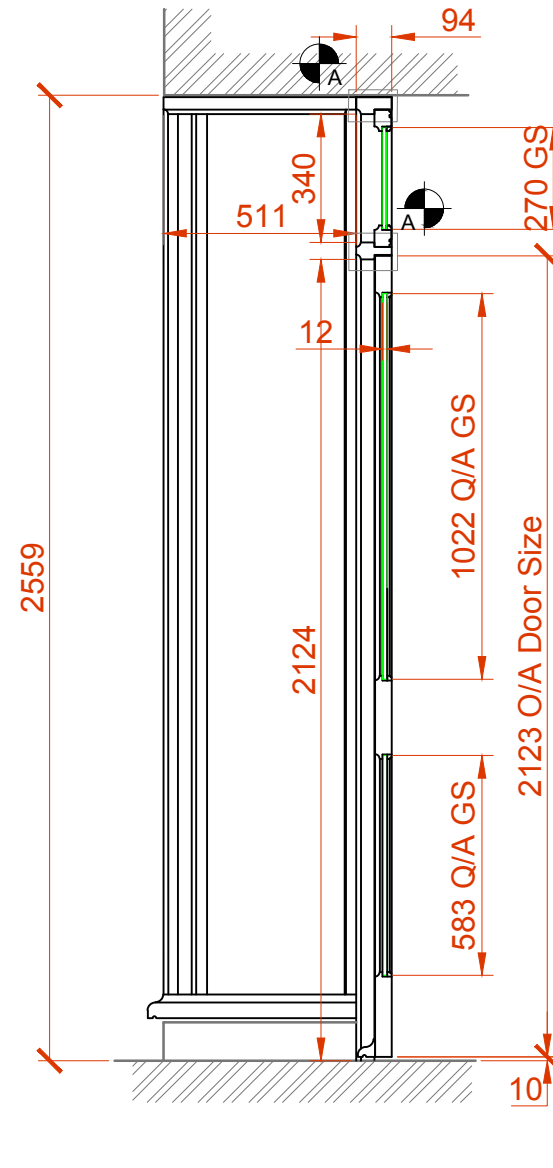


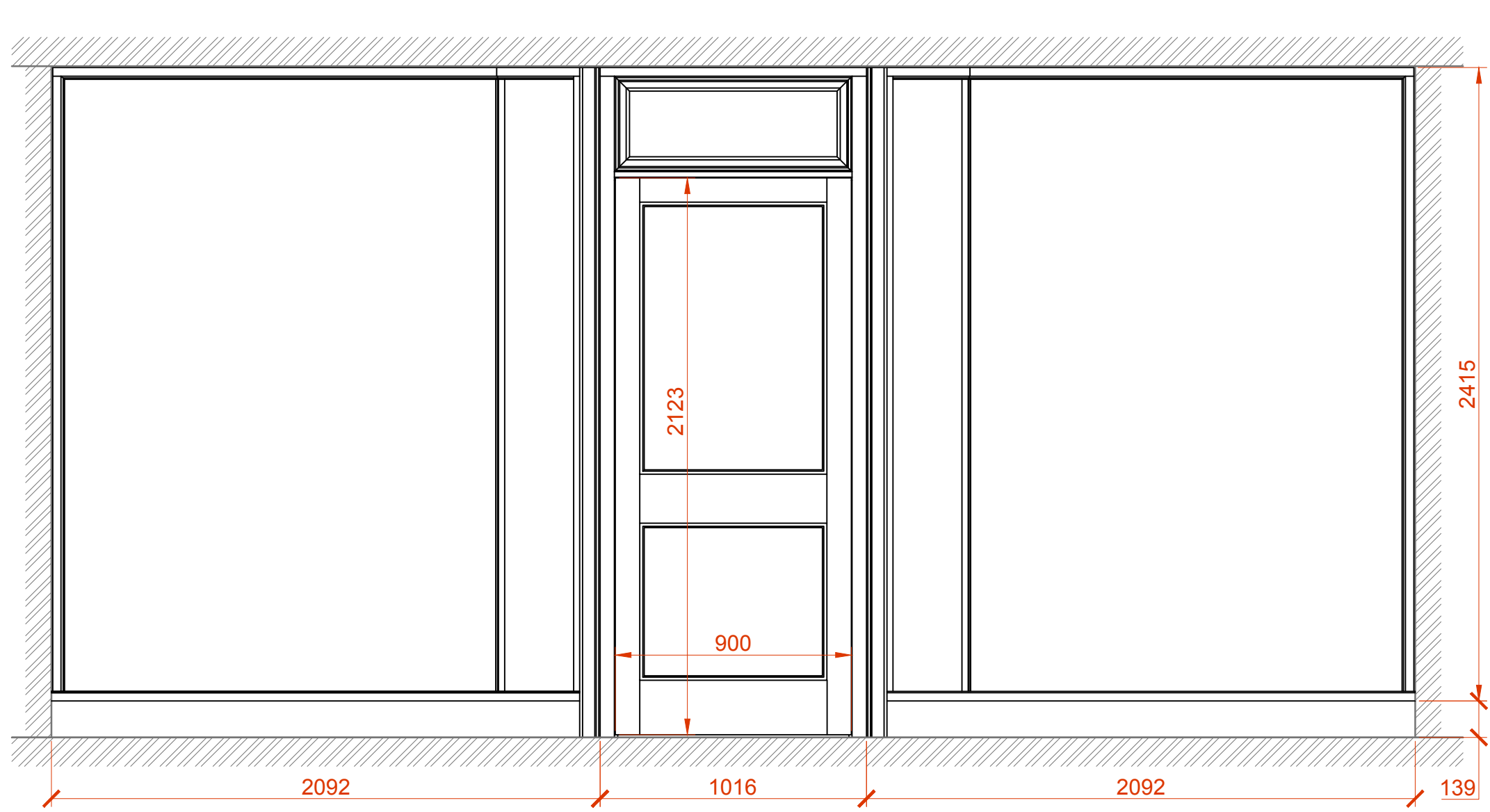
Front Elevation
Scale 1:20



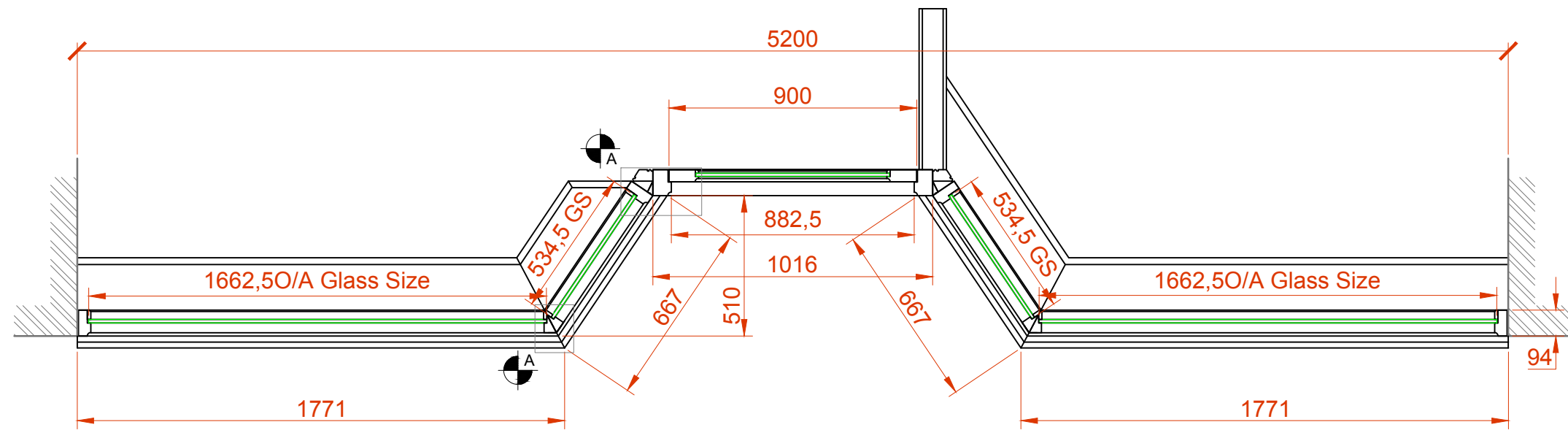
Height Section - Main Front
Scale 1:20



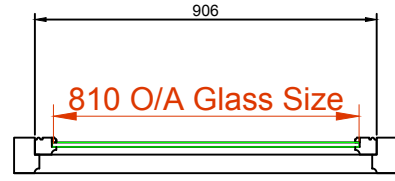
Height Section - Doorway
Scale 1:20



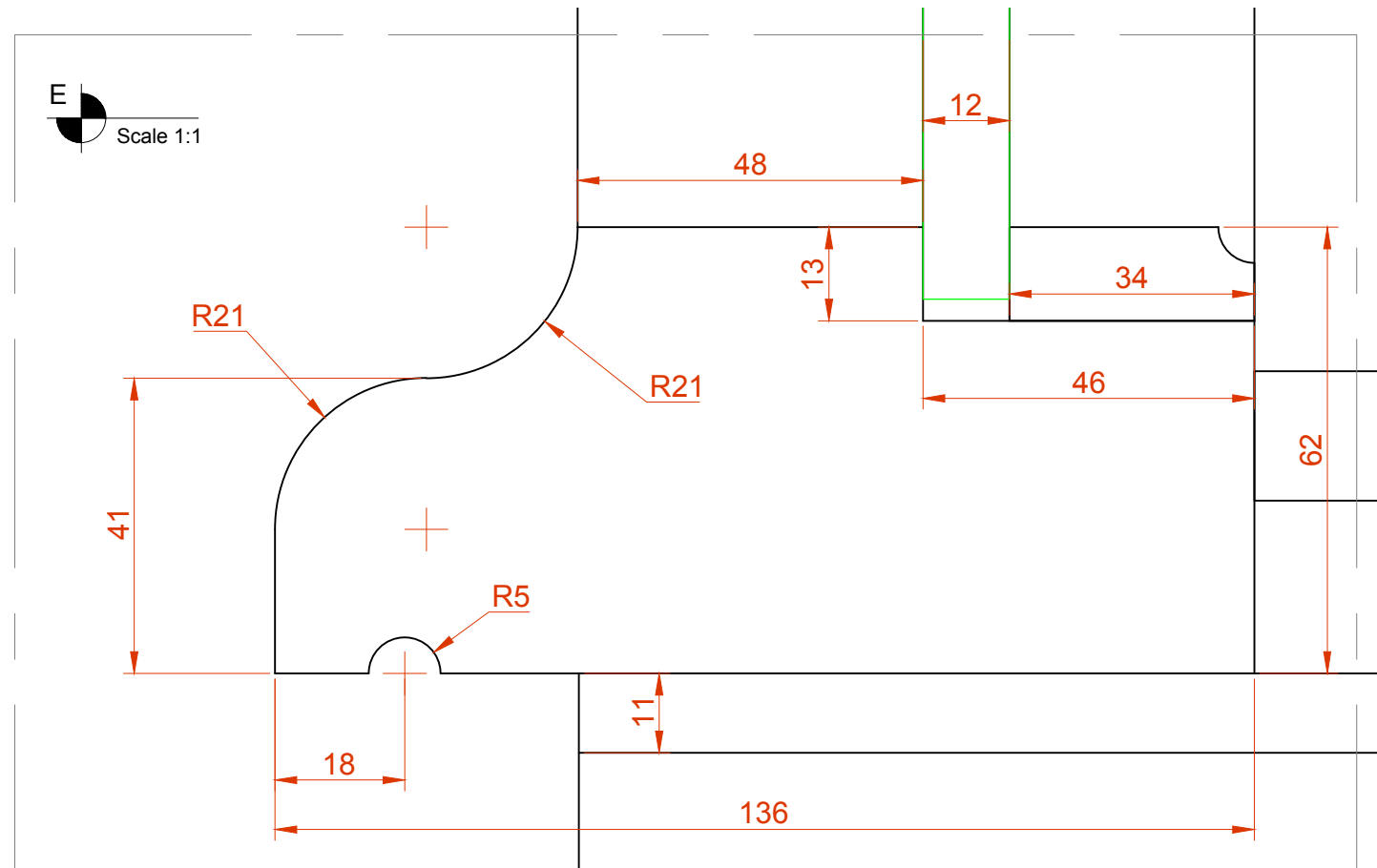
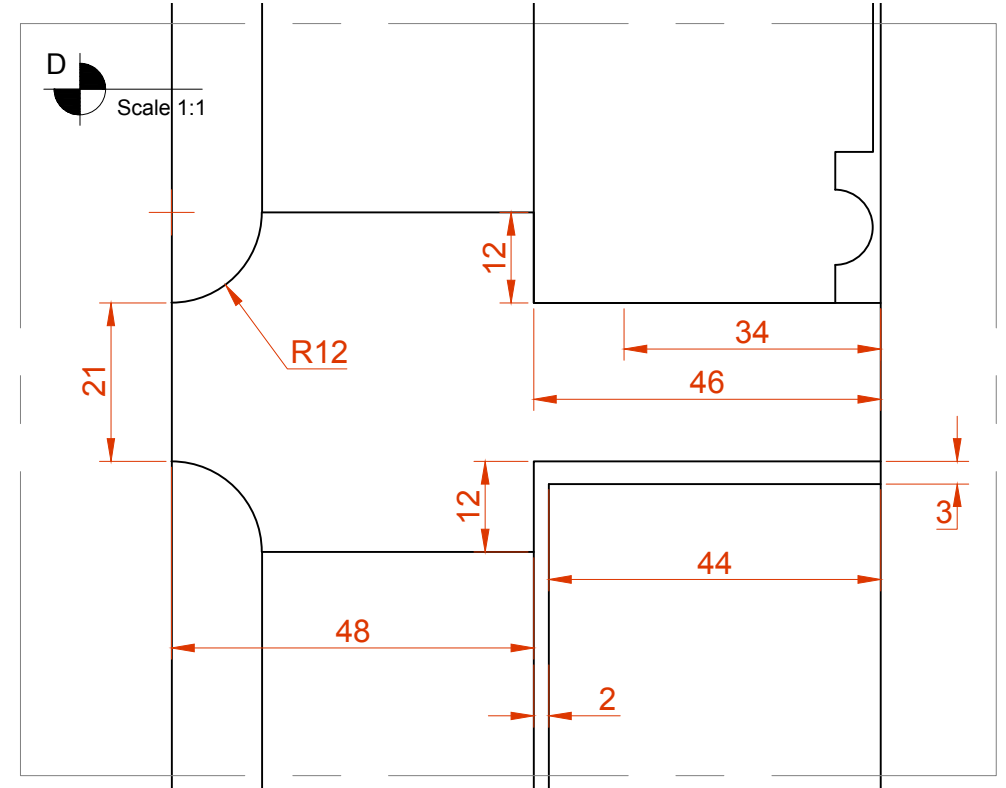
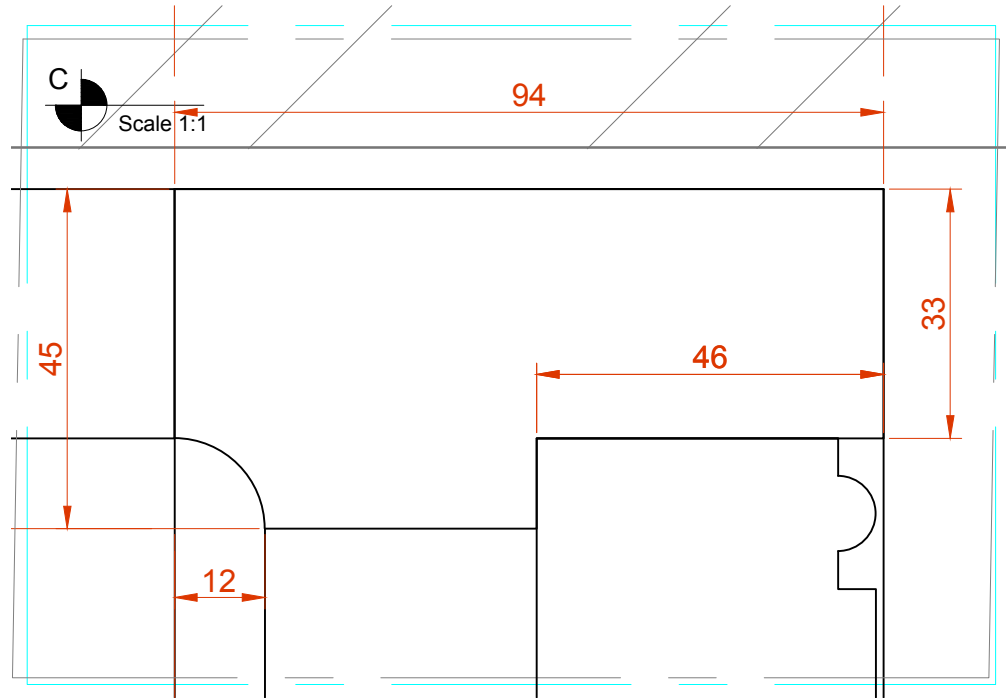
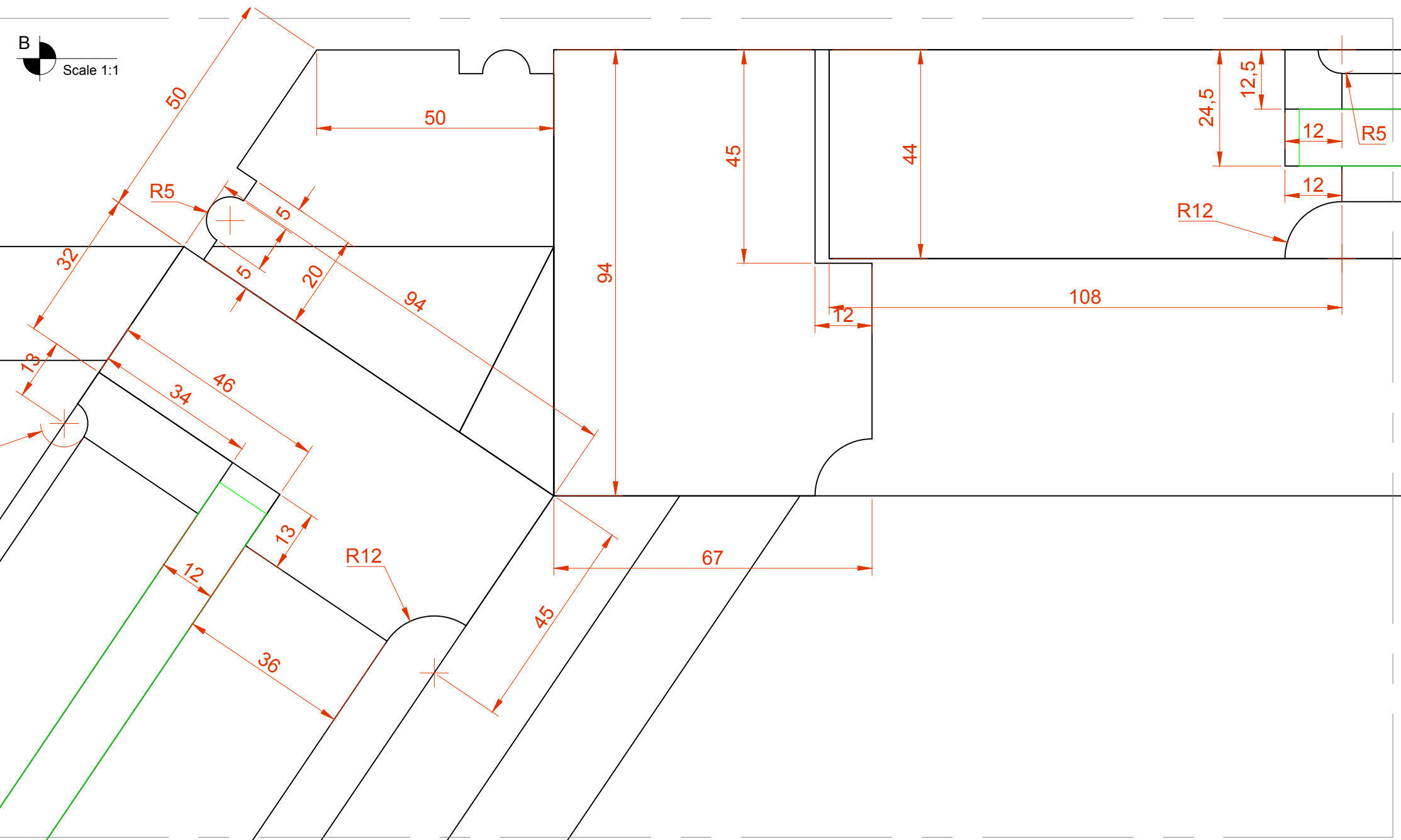
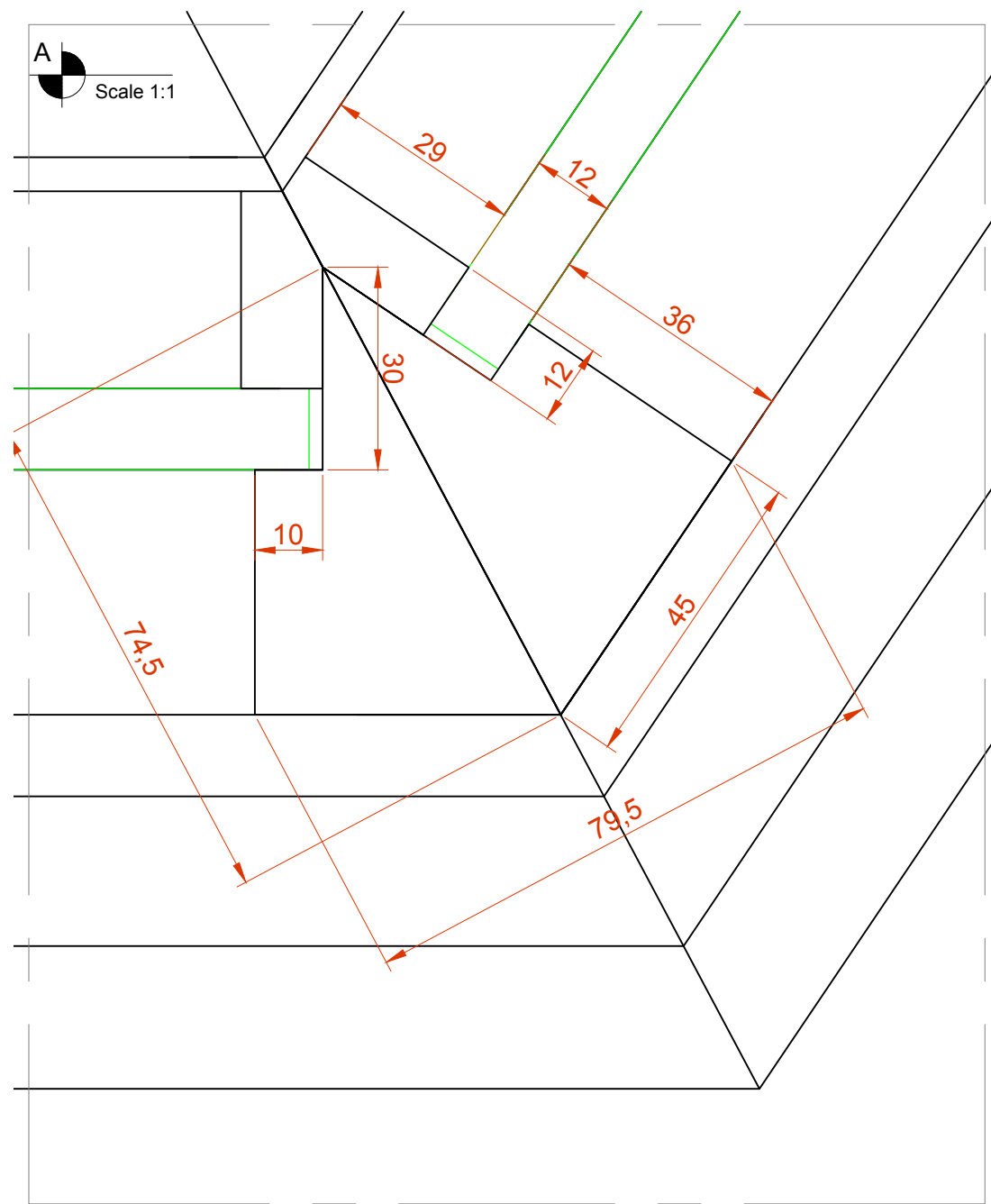
Reverse Elevation
Scale 1:20



Plan View
Scale 1:20



Above the door View
Scale 1:20



REVISIONS

Revision - Date - By - Amendment

Revision - Date - By - Amendment

NO DIMENSIONS TO BE SCALED FROM THIS DRAWING

RISK ASSESSMENT

This Drawing has been reviewed for Risks with the following assessment:

No foreseeable residual risks have been identified with the information provided by this drawing.

Foreseeable residual risks have been identified in the information contained within this drawing and as such please refer to the CA Risk file held on site by the principal contractor.

This information is issued for Preliminary information and Risk assessments are currently being carried out.

Assessment Date:

Reviewed by:

DRAWING CHECKED & APPROVED BY

Client:		Date	
Consultant:			
Planning supervisor:			
STD	FSC	MR	FR CLASS 1 FR CLASS 0

Premier Fitting,
Unit 55 The Mall,
Stratford,
E15 1XF

(T) 0208 508 3479
(F) 020 8418 9073

info@premierfitting.com

Project Title:-
Nationwide Westerham Kent

Drawing Title:-
Shopfront

Drawn By:-
MJB

Date:-
23-11-20

Drawing No.
NAT-01

Rev.
-