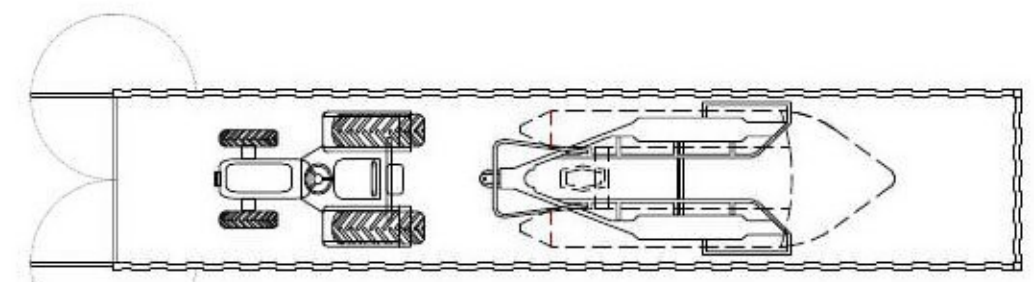
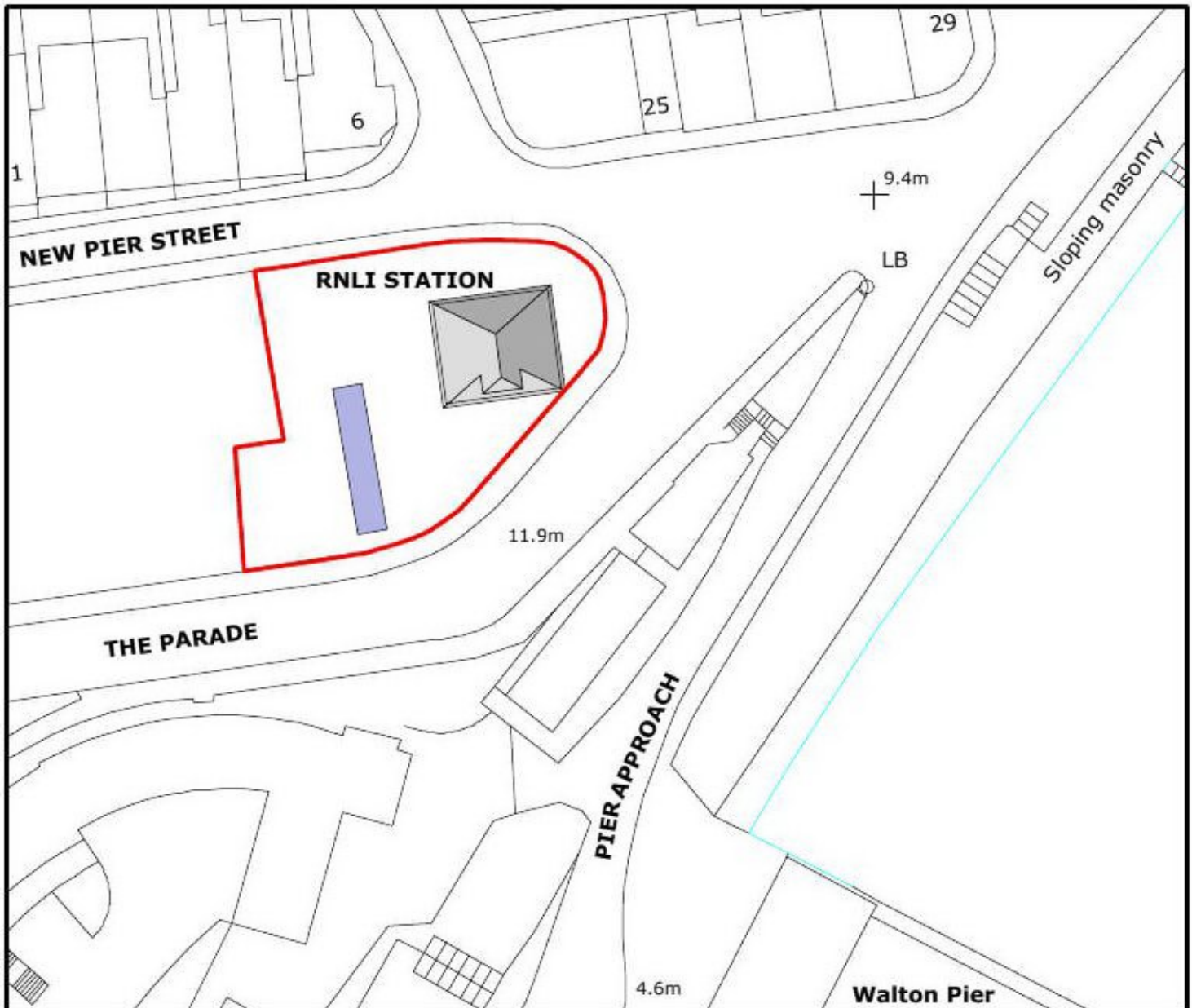


ELEVATIONS 1:100



PLAN 1:100



SITE PLAN 1:500

PLANNING NOTES

Standard steel container 12 metres x 2.4 metres x 2.9 metres. Royal blue Corten steel.

Container to be used for storage of T45 Tractor and modified D-Class 6-man launch craft. The D-Class will transport volunteers to the floating Tamar craft at the end of Walton Pier.

It is anticipated that the container will be required for up to a further 3 years - until summer 2024.



| Rev | Date | Revision Description | Scale | AS SHOWN @ A3 |
|---------------|------|---|--------------|---------------|
| Project Title | | TEMPORARY STORAGE CONTAINER, RNLI WALTON ON THE NAZE | Project Ref. | 3516 |
| Drawing Title | | SITE PLAN & ELEVATIONS PROPOSED | Drawing Ref. | PA-10 |
| | | | Date Drawn | APRIL 2021 |
| | | | Drawn By | IJ |
| | | | Checked By | |

DUNCAN CLARK & BECKETT LTD
 12A William's Walk, Colchester, Essex, CO1 1TS
 RIBA Chartered Practice