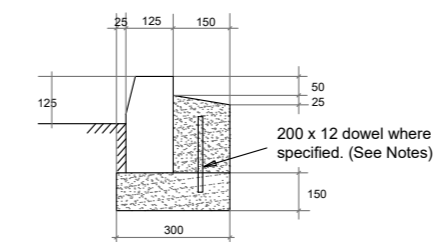


The Copyright of this drawing/design is vested in Woodsyde Development Ltd and must not be copied or reproduced in part or whole without prior written consent



Kerbing

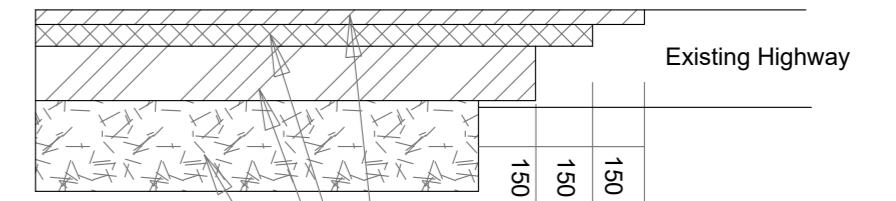


Half Battered Kerb: Type HB2

Notes:

- All Precast concrete kerbs and edgings to BS7263-3:2001
- Concrete bed and haunching ST4 Mix to BS EN 206-1:2002 and BS8500 in accordance with SHWW Clause 2602
- Kerbs and edgings may be laid directly on a fresh concrete bed within two hours of mixing, then haunching applied. Alternatively, when concrete bed has hardened, kerbs may be laid on a mortar bed.
- Mortar to Clause 2404 designation (i), mortar to be 10 to 40mm thickness.
- Concrete bed to kerbs and edgings to rest on or within sub-base layer.

Tie-in Construction

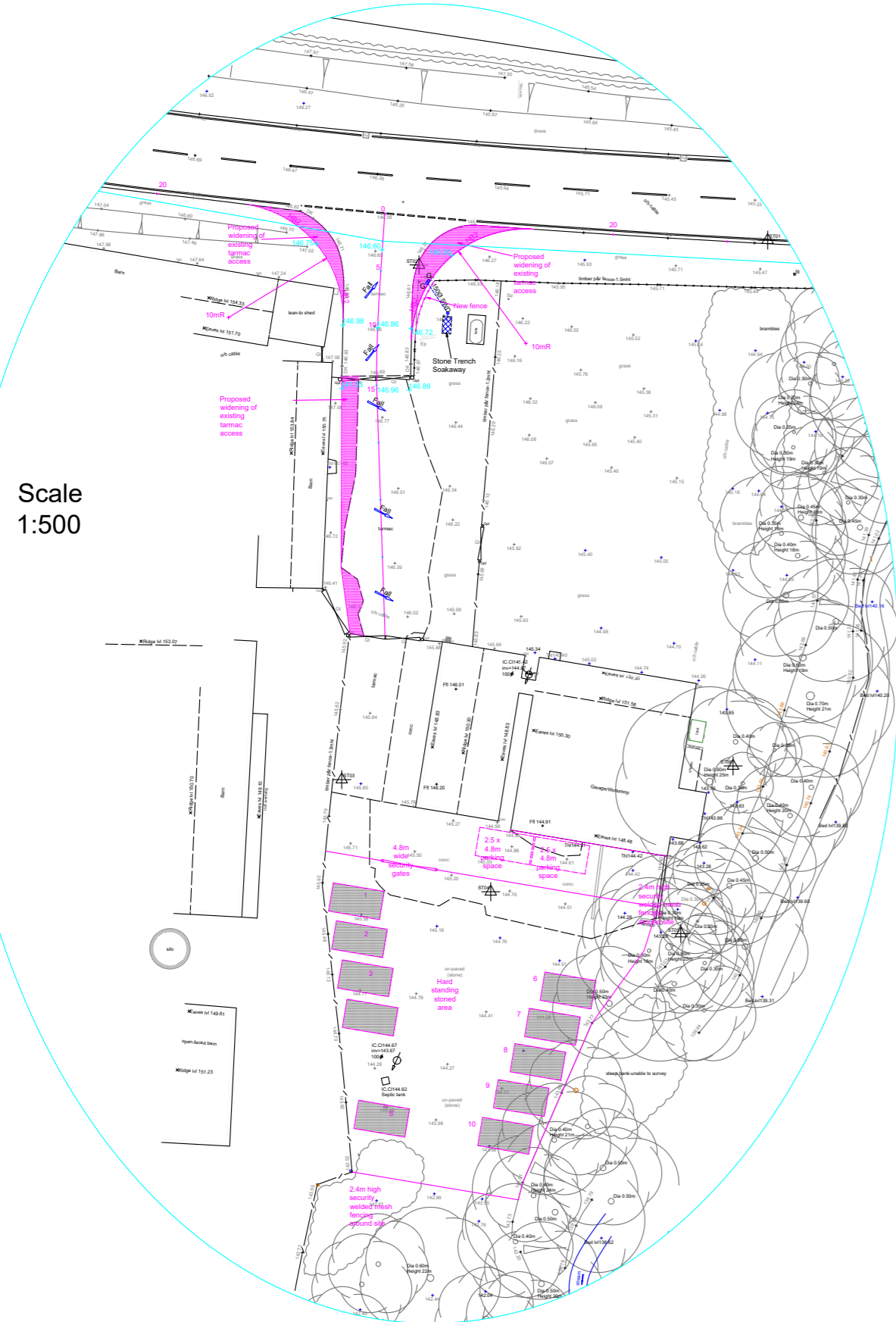


Carriageway Construction

- 30mm SMA Surface Course with 50 pen binder to BS EN 13108-5:2006 (DTP Specification Clause 912).
- 60mm Dense Binder Course to BS EN 13108-1 (AC 20 dense bin 100/150) (DTP Specification Clause 906).
- 110mm Dense Base Course to BS EN 13108-1 (AC 32 dense base 100/150) (DTP Specification Clause 906).
- 250mm MOT Type 1 Sub-base. (DTP Specification Clause 803).

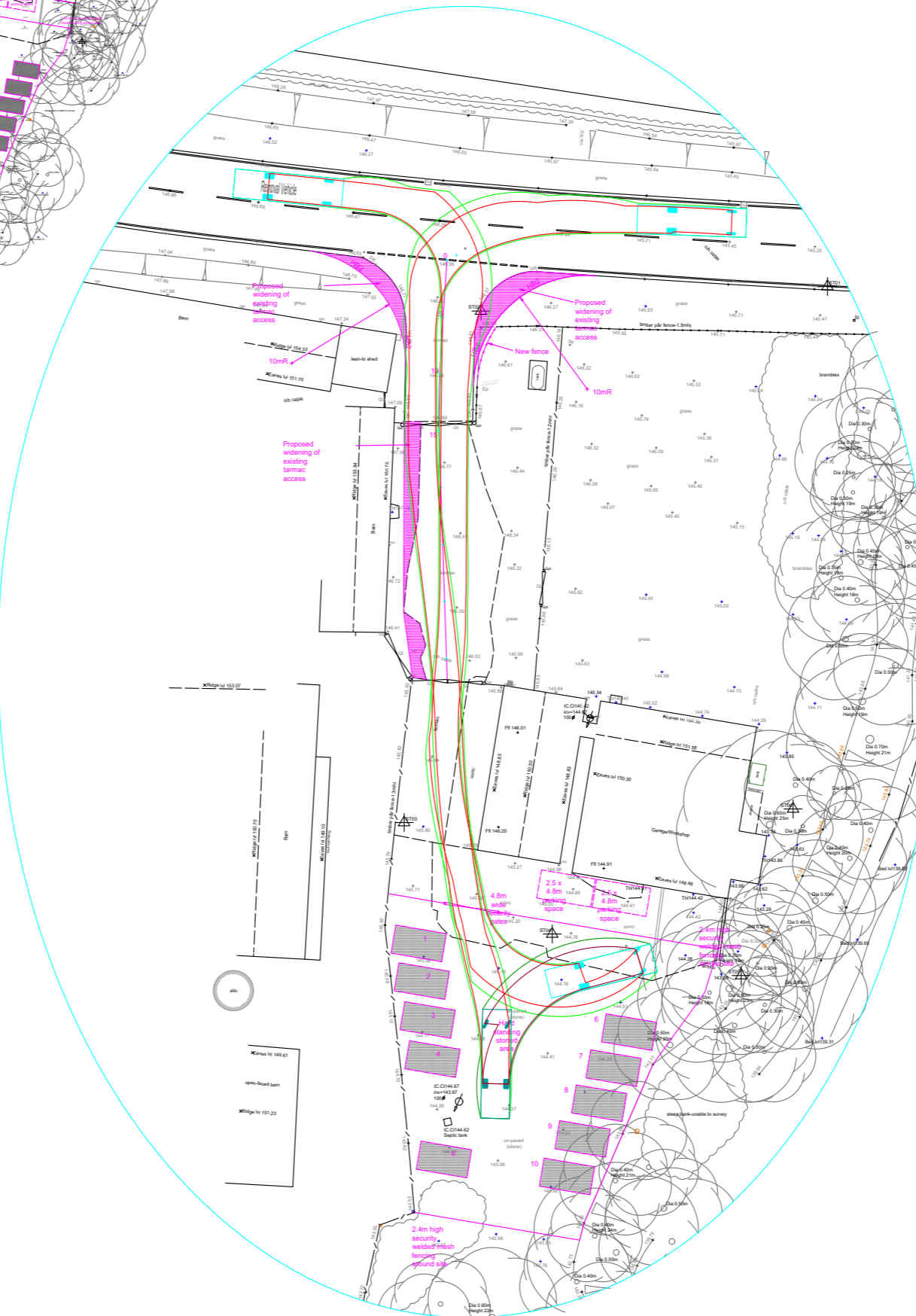
Total Construction Thickness 450mm

Proposed Levels, Kerbing, Geometry and Drainage
Scale 1:500



Scale 1:500

Vehicle Tracking Plan
Scale 1:500



NOTES:

1. The Contractor should check all heights, sizes and dimensions on site before works commence and any errors should be reported to Woodsyde Developments Limited.
2. Figured dimensions shall take preference to scaling, with any errors reported to Woodsyde Developments Ltd.
3. The access is to be provided with 10.0m radii and visibility splays of 2.3m x 215.0m which are compliant with the guidance as set out in Design Manual for Roads and Bridges Guidance CD123.
4. Junction visibility splays along a horizontal plane are wholly within the confines of highway boundary.
5. Having traversed the highway network we consider that visibility in a vertical plane are compliant with CD123.
6. The gates to the access shall remain in the existing location, 14.0m from the carriageway edge.
7. The access width at the gates is 6.0m wide.
8. Vehicular tracking has been shown which indicates a 12.0m long, 18 tonne removals vehicle comfortably negotiating the access on both entry and exit.
9. The proposed widening at the access is to be Powys Council Carriageway Construction specification.

Woodsyde Developments Ltd

Project:
Proposed Development on Land at The Old Timber Yard, Broadway Hall, Snead. SY15 6EB
Client:
Ms C Bowen
Drawing Title:
Access Arrangements Plan
Scale: 1:1000 @ A2 Date: February 2021
Drawing No:
TY-AA-500

The Poppies, Lower Road, Harmer Hill, Shropshire. SY4 3QX.
Tel: 01939 290483 Mob: 07527 352084
email: andrew@awgough.co.uk