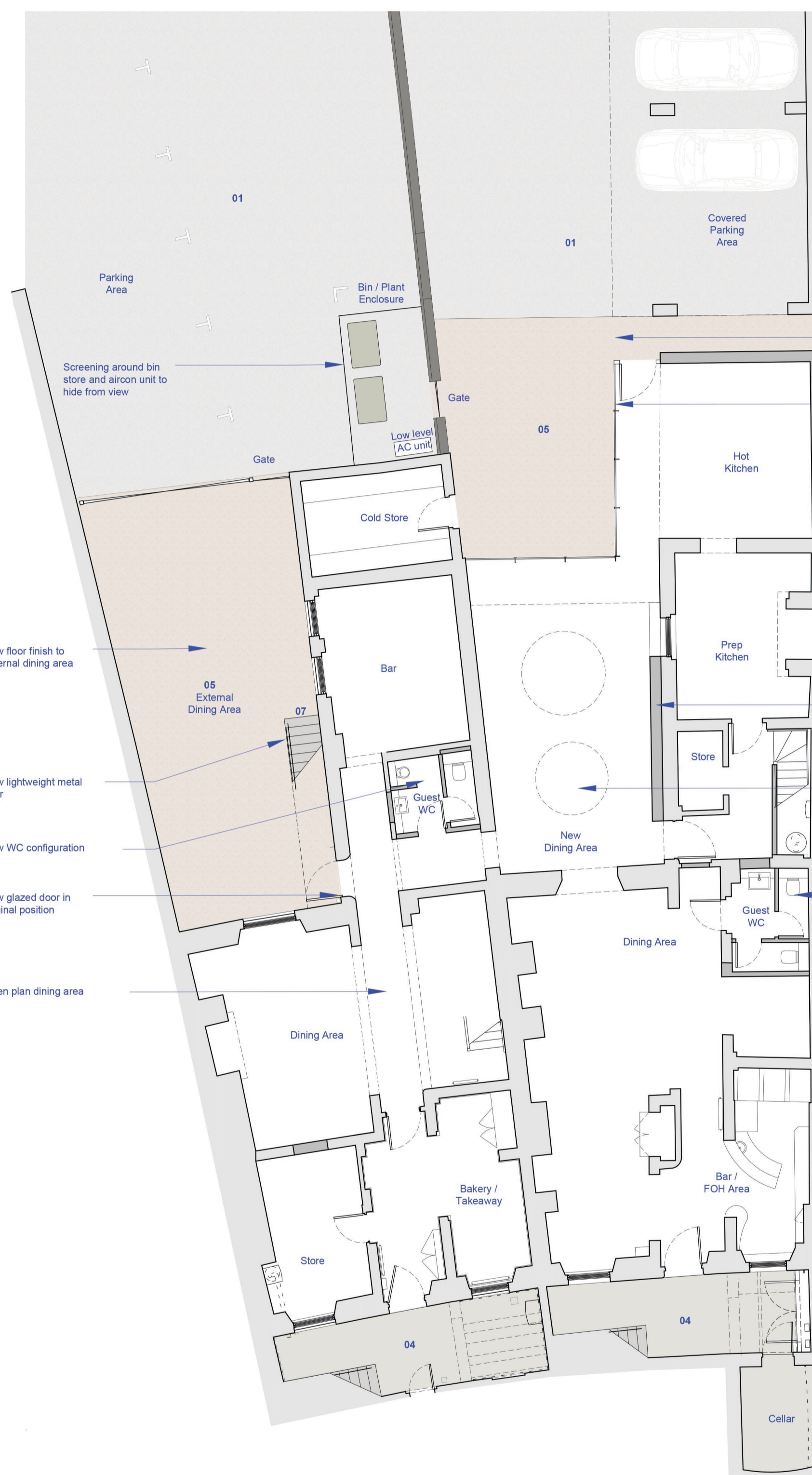


02 EXISTING LOWER GROUND PLAN
1:100

- Bins to be relocated
- Doorway width opening formed in rear wall
- Section of modern brick boundary wall to be demolished
- External stair and store to be removed
- Modern WC fixtures, fittings and door to be removed
- Doorway width opening formed in closet wing boundary wall
- Modern WC fixtures, fittings and partitions to be removed
- Existing opening to be reinstated
- Window to be removed to make full height opening



02 PROPOSED LOWER GROUND PLAN
1:100

- Screening around bin store and aircon unit to hide from view
- New floor finish to external dining area
- New lightweight metal stair
- New WC configuration
- New glazed door in original position
- Open plan dining area

- New floor finish to area around extension
- Glazed link
- Extension to house hot kitchen area
- Built out service void to conceal external building services from above
- Circular rooflights above
- New WC configuration

Key	
01	Tarmac
02	Timber decking
03	Concrete stair with metal handrail
04	Concrete slabs
05	Proposed paving
06	Metal frame glazing
06a	Metal frame door
07	Lightweight metal stair
08	GRP roof
09	Parapet coping
10	Metal fascia
11	Render
12	Metal gates
13	Timber windows and doors
13a	Security bars over windows
14	Aircon unit
15	Extract vents
16	Imperial brick
17	Modern brick
18	Screening
19	Metal gate

DRAWING REPRODUCED FROM ORIGINAL SURVEY DRAWINGS BY:
EDWARD GARDNER SURVEYS TEL:07775 488916

0m 1m 5m 10m

Scale 1:100

Drawing scale may be affected by printing, scanning or copying.

Rev	Description	Date
P4	REVISED PLANNING ISSUE	17.05.21
P3	PLANNING ISSUE	12.05.21
P2	DRAFT PLANNING ISSUE	23.04.21
P1	Issued for review and sign off	16/04/21

DESIGN STOREY

13 Royal Crescent, Cheltenham, GL50 3DA
0333 733 1373 hello@design-storey.co.uk

Drawing

Existing and Proposed Lower Ground Plans

Address Project No. Drawing No. Revision

No. 3 Restaurant,
12 Royal Crescent
Cheltenham, GL50 3DA

2111 P003 P4

Issue
PLANNING

Scale
1:100@A1