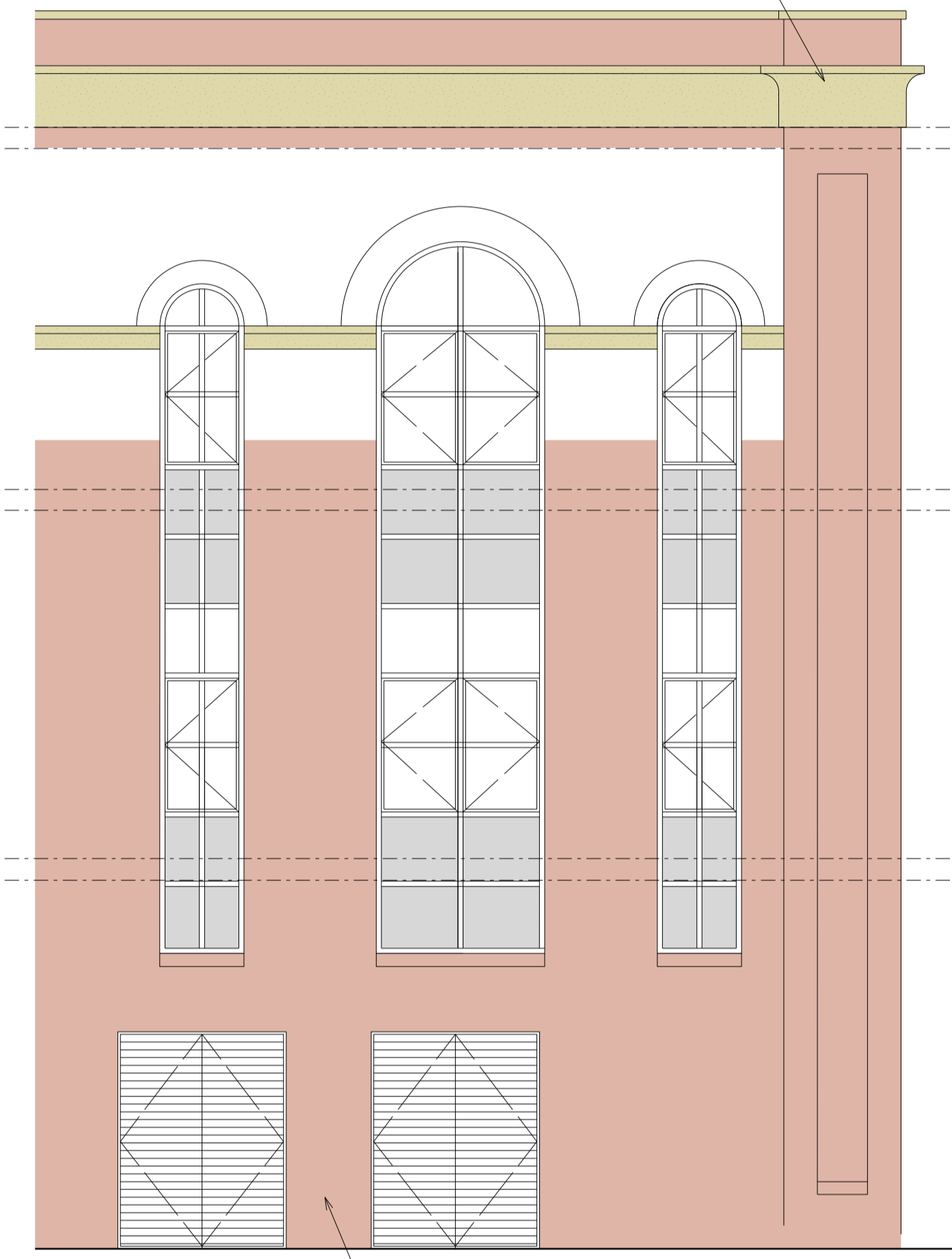


Existing stucco cornice and string course to be repaired in line with surviving sample on northwest corner

Existing arched head window openings to be unblocked and fitted with new W60 stacked window unit with enamel backed spandrel panels between floors
Window frames to be powder coated RAL 7016 Anthracite Grey

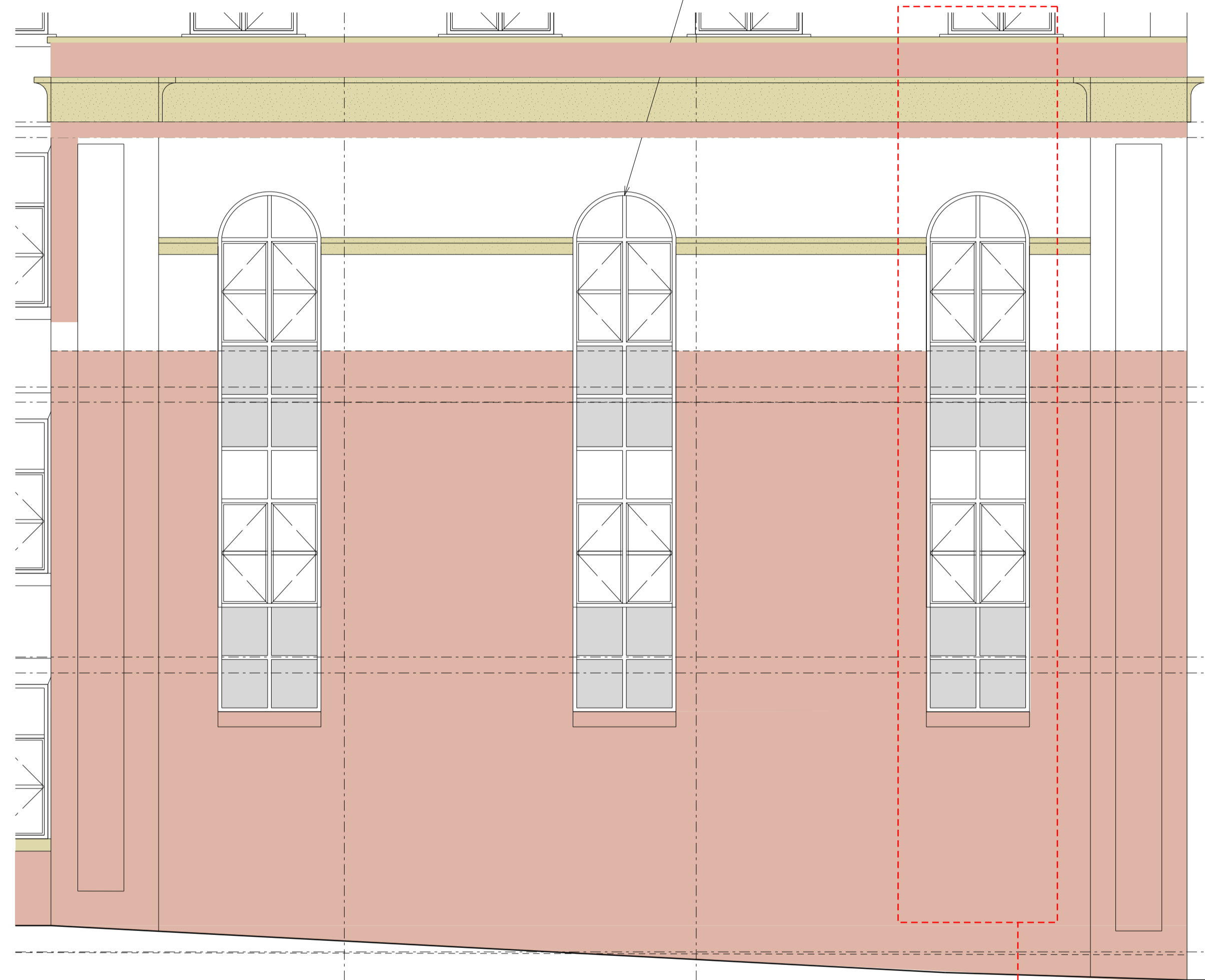


ELEVATION 1
FACING BRADFORD ROAD

2 no. new openings formed within existing brickwork to form entrances to the refuse stores. Openings to be infilled with polyester powder coated pivot hinged frameless double leaf door with access control.

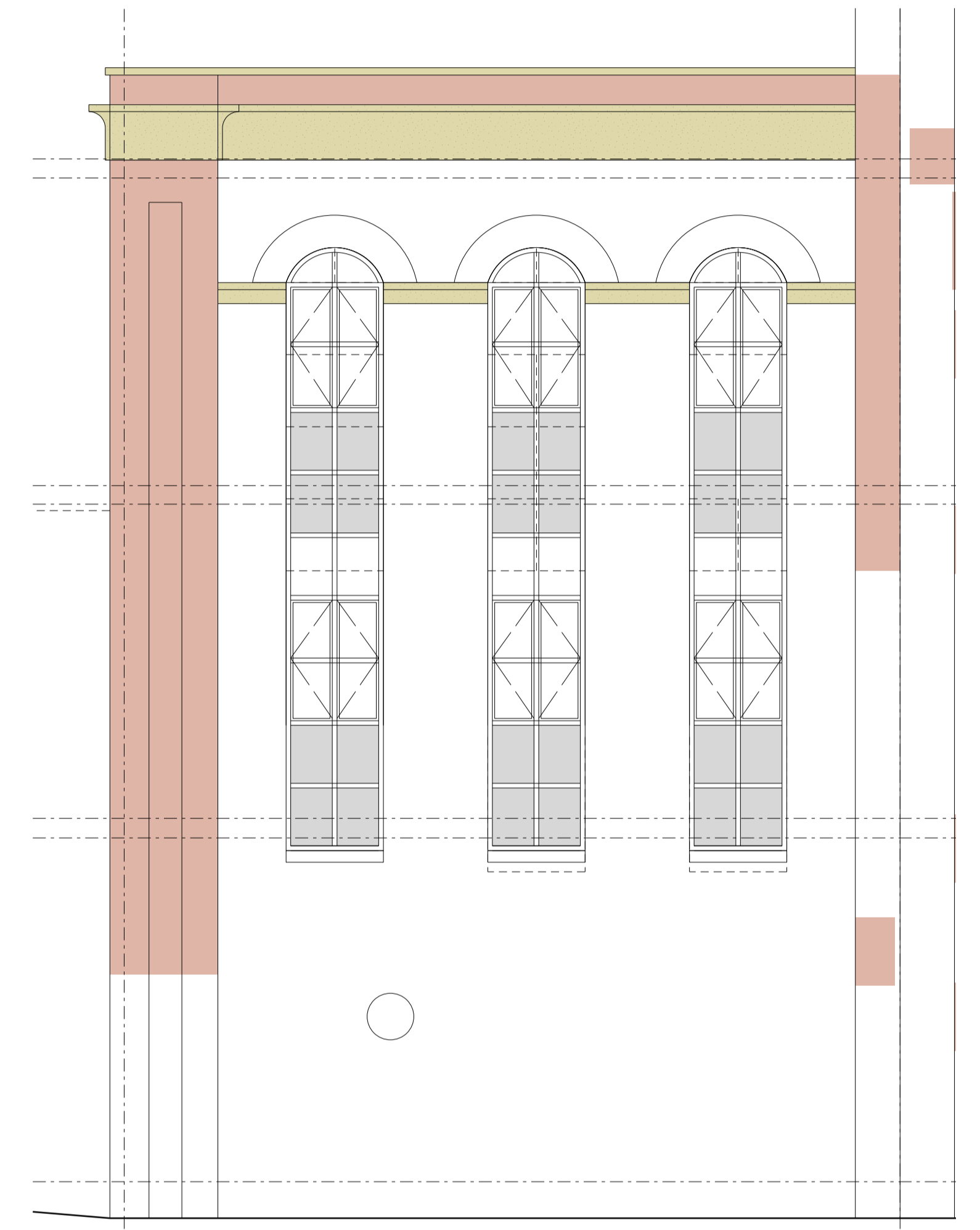
Width of openings to match width of central window unit above and both door openings to be centred on the windows above

Colour: RAL 7016, Anthracite Grey



ELEVATION 2
SOUTHWEST ELEVATION

L(-)901
DET. 1



ELEVATION 3
CANAL FACING ELEVATION

