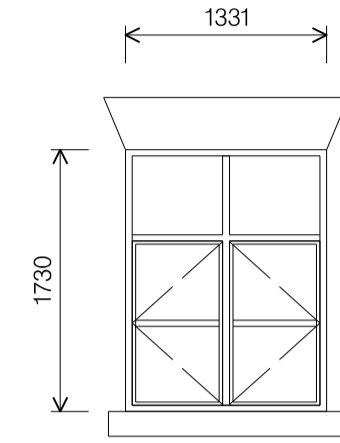
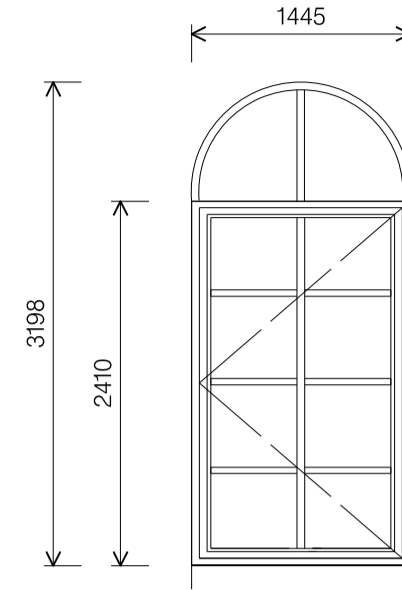


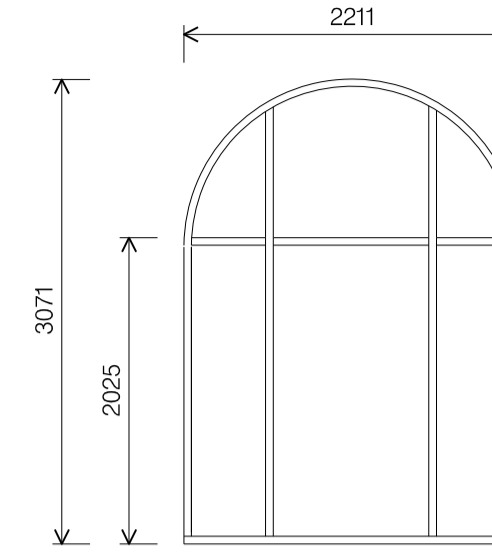
W.01
Typical replacement window



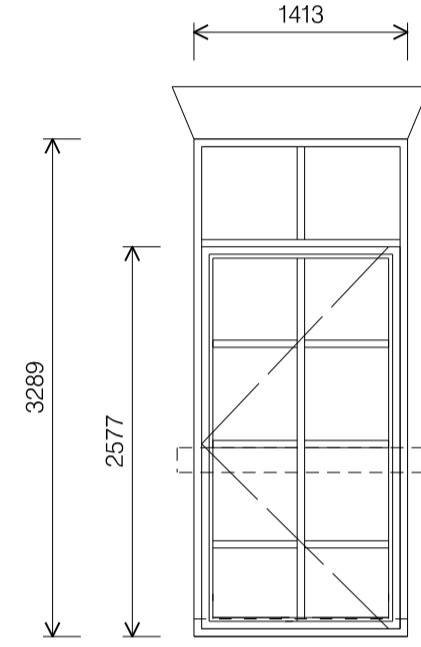
W.02
Ground floor Bradford Road



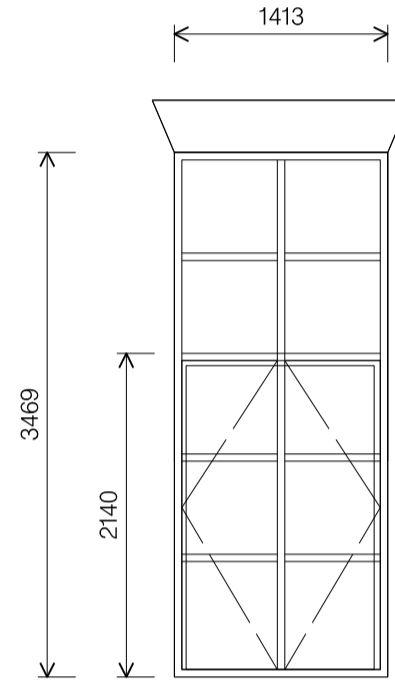
ED.01
External door to Courtyard
Arched fanlight



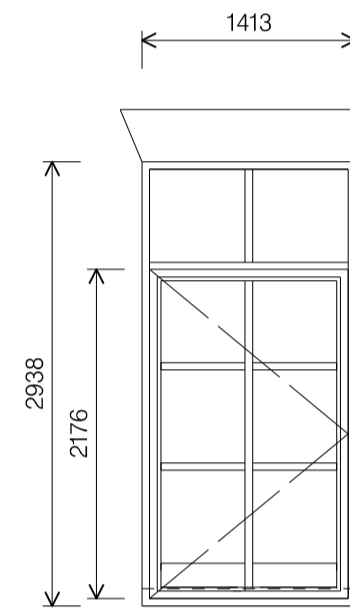
W.03
Round headed windows to Ground floor, South West Elevation



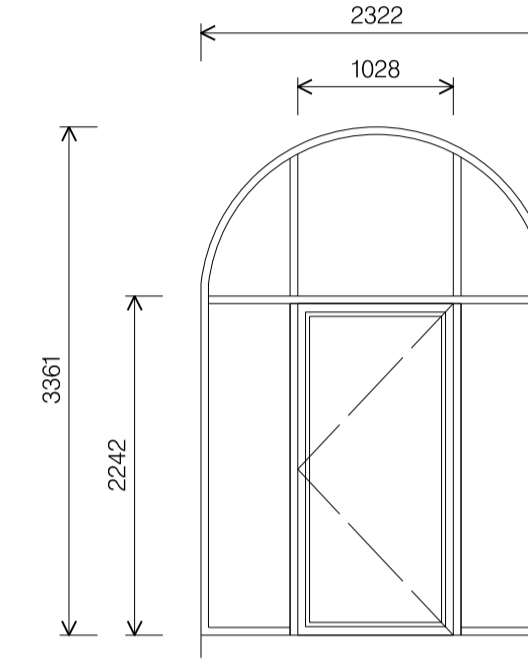
ED.02
External Door
Single Leaf, 1 pane fanlight



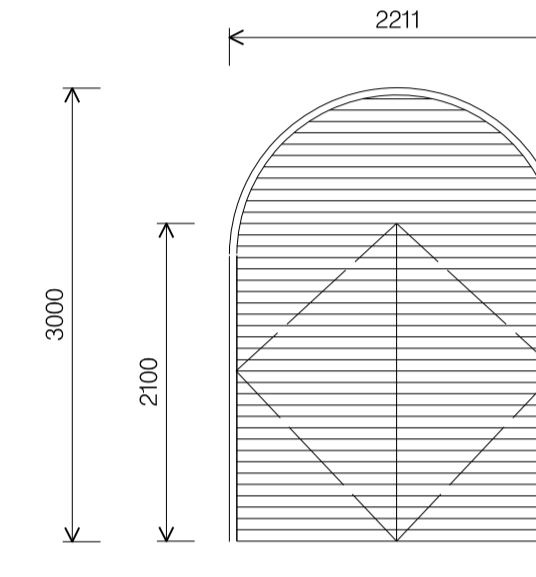
ED.03
External Door
Double Leaf, 2 pane fanlight
Fire escape to canal



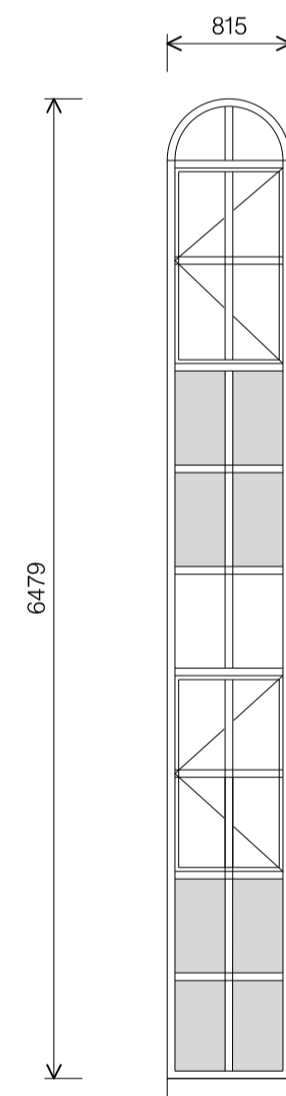
ED.04
External Door
Single Leaf, 1 pane fanlight



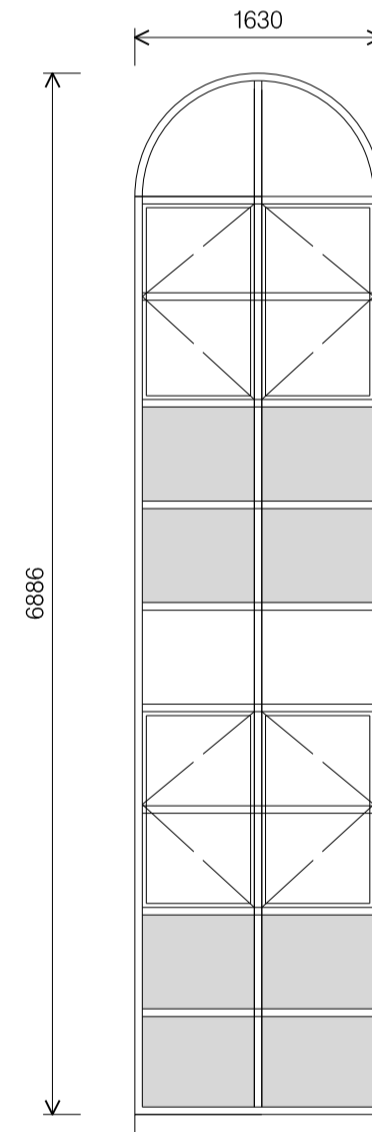
ED.05
External Door
Courtyard entrances



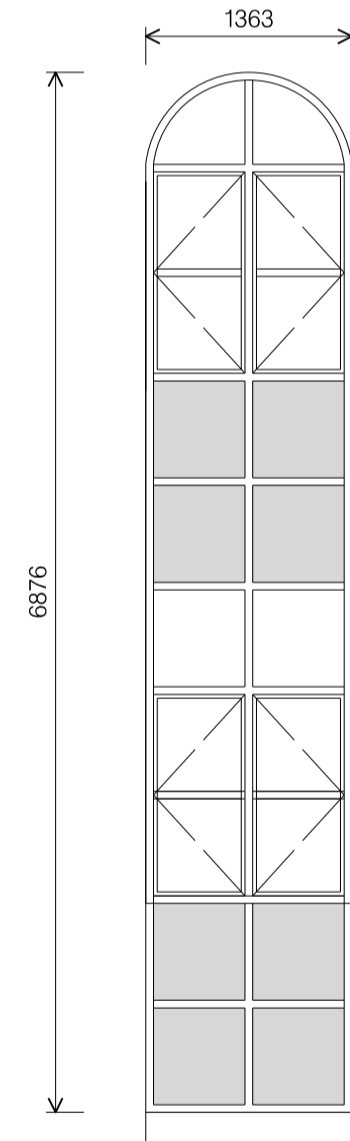
ED.06
External Door
Double leaf, round headed louvre door
Sub-station
(subject to agreement with utility company)



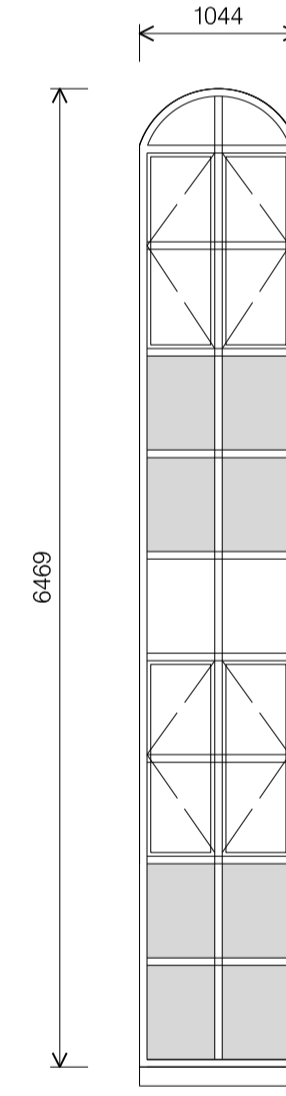
W.04
Window
Engine House – Bradford Road



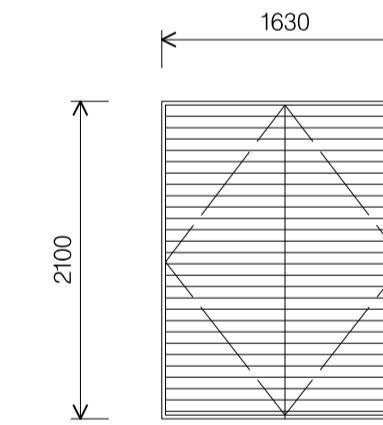
W.05
Window
Engine House – Bradford Road



W.06
Window
Engine House – Southwest Elevation



W.07
Window
Engine House – Canal



ED.07
External Door
Double leaf, frameless louvre door
Plant Rooms and Refuse Stores