

Waungron Road, Cardiff

Landscape DAS Input

May 2021

Prepared by: Matt Jackson & Ki Tong
Address: The Urbanists, The Creative Quarter, 8A Morgan Arcade, Cardiff, CF10 1AF, United Kingdom
Email: graham.bryce@theurbanists.net & paraic.mcdevitt@theurbanists.net
Website: www.theurbanists.net

Issue date	20 05 21
Drawing status	PLANNING
Revision	B
Author	KT
Checked by	MJ

All plans within this document are reproduced from Ordnance Survey with permission of the controller of Her Majesty's Stationary Office (C) Crown copyright. Unauthorised reproduction infringes Crown copyright and may lead to prosecution/civil proceedings. Licence No 100054593.

01 GENERAL ARRANGEMENT

LANDSCAPE DESIGN

The landscape design falls into 3 areas; the public space around the building to the north and east of the main building, the roof terrace on the first floor with outward views to the west and the public realm area to the west.

The design intention of the bus interchange is to create a welcoming urban design space with shared access.

The creation of large, densely-planted rain gardens along footways not only helps to sustainably manage surface run-off water, but also provides a more defensible barrier between pedestrians and the highway which is a more verdant travel experience for both parties.

A distinct feature along the western edge of the development will be the creation of artwork to integrate with the sheet pile retaining structure adjacent to the railway line. Weathering steel sheets will be laser cut with natural shapes and silhouettes, before being fixed to the sheet piling and back-lit to illuminate the shapes/patterns that will glow in the evening and night.



01 GENERAL ARRANGEMENT

CIRCULATION SPACE

The Building is located on the corner of a busy intersection of Waungron road and Western Avenue, with links to the east/west and north/south respectively.

The close proximity to the railway station and creation of a bus interchange means that the site will be used as a through-route and temporary stopping point for commuters waiting for a bus. Our landscape design seeks to leave a positive impression on all those passing through, whichever part of the site they interact with. The circulation routes around the site are legible and efficient for pedestrians without compromising the natural aesthetic.

Access, circulation, and DDA compliance have been developed alongside Lime Transport and with reference to the Manual for Streets.

SAFETY AND SECURITY

Creating a landscape where site users feel comfortable and secure is of utmost importance. Rain gardens adjacent to the footway create breathing space between pedestrians and traffic. All street trees will be specified with clear stems to maintain sightlines within the scheme. Lush planting on the eastern edge of the building creates a defensible barrier from the footway for residents on the ground floor.

BUILDING INTERFACE

The landscape has been designed to not only create a legible and green environment for site users, but also accomodate ease of access for future maintenance of the building. The East and West facades of the architecture are grounded by street trees and ornamental planting within rain gardens.



01 GENERAL ARRANGEMENT

BIODIVERSITY & ECOLOGY

Tree planting

The tree strategy includes four species offering a variety of ecological benefits. Large specimen trees (*Platanus Hispanica*) will mature into trees of significant size and canopy spread giving structure at height providing for large numbers of insect and birds species. In contrast Small multi stem trees (*Birch*) provide important habitat structure of medium height for insects and birds.



Swales

These are to be detailed with a combination of herbaceous perennial, ornamental grass species and shrubs. The planting design will provide a variety of pollenating species for bees and other insects. The seasonal planting will also provide some cover throughout the year for a variety of species to find low cover. Gravel mulch is specified for the swales which also provides good habitat for insects. At detail design a variety of materials are planned for the swales to incorporate small changes in levels and depressions in the substrate. This will be formed by timber and stone piles within the landscape to recreate a formalised one matrix which contributes to significant biodiversity with landscape design. The damp conditions within the swale will potentially support amphibians and the opportunity to provide small pockets of standing water will be explored at detail design as part of the Suds Scheme as it is recognised that even very small water bodies will support a large number of amphibians and pond life.



Green screen

This element provides dense cover against the vertical boundary condition and is idea habitat for nesting birds and small mammals. In addition sand pockets are planned which will be left for insects such as solitary bees to colonise.

Shrub planting beds (at ground level and on the roof terrace)

A range of herbaceous perennials, and woody, ornamental shrubs are planned to provide further variety including fruiting and berry producing species for birds



02 HARD LANDSCAPE

HARD LANDSCAPE

The hardscape is based on the **Cardiff Public Realm Manual Streetscape Character** but includes precedents from the local street scene along Waungron Road and Western Avenue.

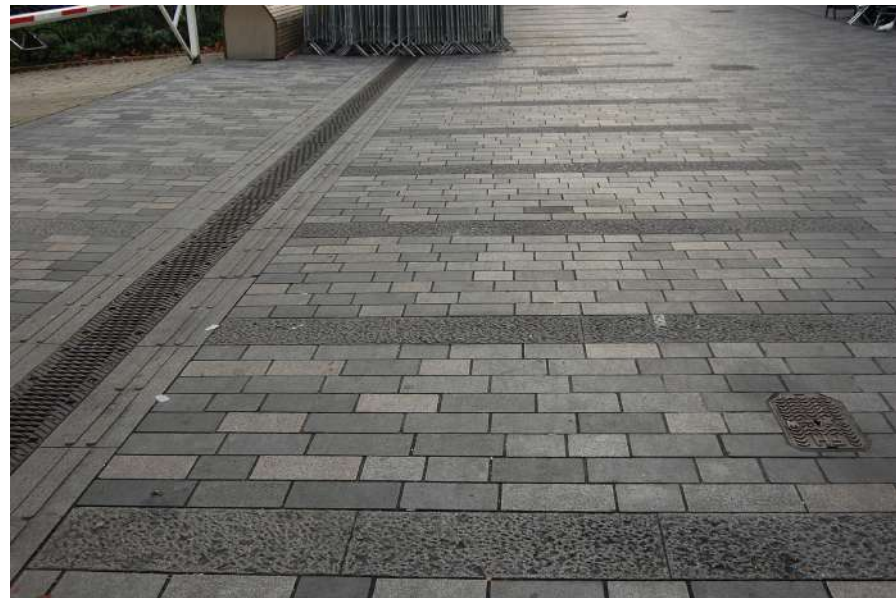
The Streetscape Character for the public realm areas adjacent to the new road and bus terminus has been identified as Area C: Non-Residential, and a hardscape palette suitable for intensive usage but maintaining a distinctive local character. Proposed hard surface materials are light grey concrete blocks or tegula sets in a stretcher bond perpendicular to the new road. Edging along the new road and SuDS planters will be conservation kerbs with standard concrete titan kerbs alongside bus stops. Dark grey banding within the hard landscape highlights the positions of the rain gardens along the street. Asphalt is used elsewhere to tie in with the wider streetscape.

The Streetscape Character for the public space adjacent to the building to the east and north have been identified as a combination of Area C: Non-Residential and Area D: Residential, and a hardscape palette reflecting the design intending from both Streetscape Character Areas. However, the hard existing streetscape along Waungron road and Western avenue are predominantly asphalt and the wholesale introduction of new materials would conflict with the existing character. A combination of asphalt to reflect what's existing and textured flag paving to reflect design aspirations for both Streetscape Characters would best integrate the scheme within the surrounding area.

Along the north and eastern facade of the building, the frontage is mixed use between commercial and residential entrances; flag paving delineates private entrances to properties from the footway and is proposed as grey/silver grey with dark grey banding in a staggered pattern perpendicular to building/roads. Flag paving is also used to delineate the cycle provision; cycle stands, public use air pump and tap.



02 HARD LANDSCAPE



03 SOFT LANDSCAPE

SOFT LANDSCAPE

Planting around the development seeks to create a natural and lush aesthetic that maintains year-round interest, complements the architecture, and provides a new ecological resource for local wildlife.

A mixture of shrubs, ornamental grasses and perennials will be the basis for planting within the public realm, with species being selected to thrive in their particular conditions on site, be that within rain gardens, shade, or full sun. The use of grasses in particular creates an extra level of dynamism and sensory experience to the landscape; swaying and rustling in the breeze. An emphasis has been placed on perennial species that benefit the local ecosystem.

Street trees play an integral role in setting the building within the landscape with vertical green height and also feature within rain gardens. Their role in combating climate change is also important, absorbing carbon dioxide and reducing the urban heat island effect.

Constrained by existing utilities underground, tree-planting is extremely challenging along the north and east boundary of the site. Hence, the design proposes trees and large shrubs in raised planters with soil volume sufficient to support growth.

A green screen on the lower western facade of the building creates an attractive feature for the development that increases vertical greening and potential biodiversity gains.

See next page for an indicative list of plant species and raised planters.



03 SOFT LANDSCAPE

Indicative Plant List

Ornamental Grasses:

Sesleria autumnalis
Deschampsia cespitosa
Calamagrostis 'Karl foerster'
Hakonechloa macra
Carex testacea 'Prairie fire'

Herbaceous Perennials:

Geranium spp.
Epimedium x *warleyense* 'orange queen'
Veronica spp.
Salvia caradonna
Persicaria affinis 'superba'
Tiarella cordifolia spring symphony
Brunnera spp.
Echinacea green jewel/green twister/wizard

Shrubs:

Cornus kelseyi
Hebe green globe/mound
Spirea spp.

Trees in SuDS features considered:

Alnus glutinosa varieties
Quercus palustris varieties

Trees in non SuDS features considered:

Betula utilis jacquemontii
Betula pendula varieties
Quercus robur fastigiata 'Koster'
Quercus x *bimundorum* 'crimson spire'
Prunus spp.



04 STREET FURNITURE

STREET FURNITURE

The street furniture palette has been chosen to respond to the architecture and provide contemporary additions to the streetscape. Cycle infrastructure such as Sheffield stands, and enhanced with cycle storage lockers and a cycle pump station to help promote active travel around the area. A drinking water station provides valuable access to drinking water, particularly during the summer months. Seating within the public realm provides a place for temporary rest for pedestrians. On the roof terrace, carefully organised seating creates peaceful spots for building users to unwind and connect with the space's nature. Residential social groups are promoted with a variety of communal 'Grow your own' areas on the roof terrace and appropriate storage facilities will be provided.

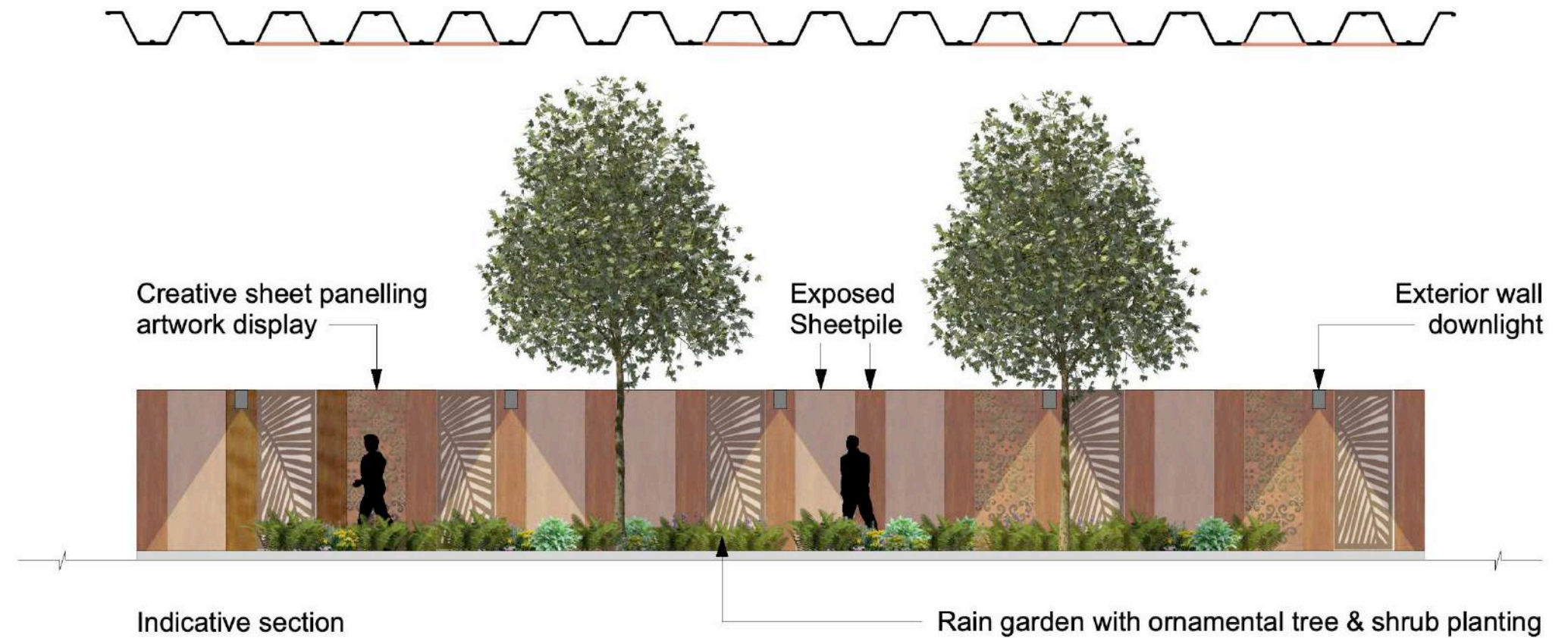


05 ARTWORK

ARTWORK

A distinct feature along the western edge of the development will be the creation of artwork to integrate with the sheet pile retaining structure adjacent to the railway line. Weathering steel sheets will be laser cut with natural shapes and silhouettes, before being fixed to the sheet piling and back-lit to illuminate the shapes/patterns that will glow in the evening and night.

See indicative section and precedents to illustrate our vision.



06 ROOF TERRACE

ROOF TERRACE

The roof terrace is a vital resource for building users, and has been designed to maximise planting. Small trees create ample shade in the summer months, and hedge planting gives more breathing room for those looking directly onto the space. Raised planters for food production will help create a sense of community around the terrace for those utilising the space, as well as reducing waste from having to buy in less fruit/vegetables. More ornamental shrub planting provides additional visual interest through the year.



06 ROOF TERRACE

TERRACE PLANTING

Indicative Platning Species

Small multi stem tree species considered:

Amelanchier lamarckii
Acer Japonica
Cornus controversa

Hedge considered:

Buxus sempervirens
Elaeagnus eb. Compacta
Pittosporum ten. Golf Ball

Ornamental grasses, herbaceous, perennials & bulbs considered:

Geranium 'Rozanne'
Rubeckia subtomentosa
Miscanthus nepalensis
Anemanthele lessoniana
Deschampsia cespitosa
Aubrieta deltoidea 'Chianti'
Armenia maritima
Achillea tomentosa
Carex alba
Erigeron karvinskiana
Fetuca rubra 'Patricks Point'
Helianthemum 'Wisley Pink'
Muscari neglectum
Silene uniflora 'Alba'
Sedum reflexum
Thymus serpyllum
Allium spp

Climbing plants considered:

Parthenosisus Tricuspidata
Hedera Helix 'Green Ripple'
Hedera Helix 'Woermer'





The Urbanists, The Creative Quarter, 8A Morgan Arcade, Cardiff, CF10 1AF, United Kingdom

