


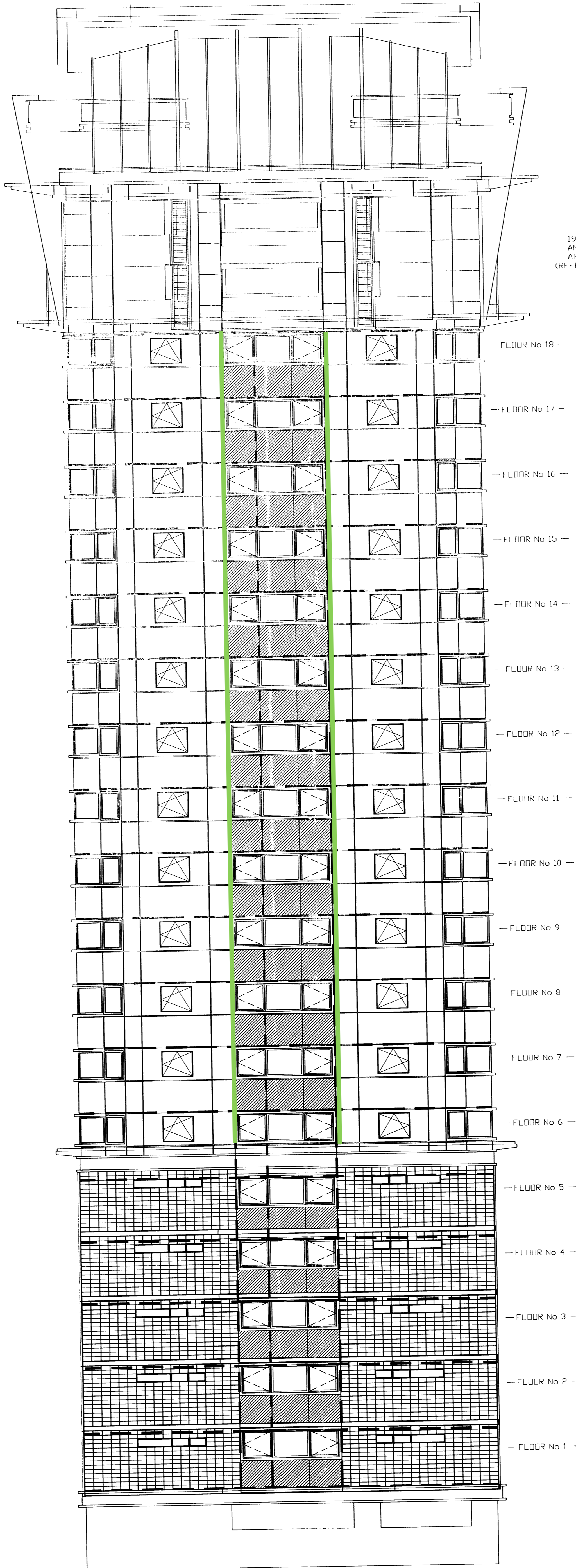


NOTE  
FOR HORIZONTAL RAIL SETTING OUT SEE DWG 286-284.  
FOR VERTICAL RAIL SETTING OUT SEE DWG 286-280.

KEY / COLOURS	
	= RAL 9007
	= STANDARD RAINSCREEN RAL 9006
	LOUVRE AND CHANNEL COLOUR XDB025
	= FIRE BREAK




19th FLOOR  
AND ABOVE IN  
ABEYANCE.  
(REFER TO MHA DWGS)

- FLOOR No 18 —
- FLOOR No 17 —
- FLOOR No 16 —
- FLOOR No 15 —
- FLOOR No 14 —
- FLOOR No 13 —
- FLOOR No 12 —
- FLOOR No 11 —
- FLOOR No 10 —
- FLOOR No 9 —
- FLOOR No 8 —
- FLOOR No 7 —
- FLOOR No 6 —
- FLOOR No 5 —
- FLOOR No 4 —
- FLOOR No 3 —
- FLOOR No 2 —
- FLOOR No 1 —

NORTH EAST ELEVATION

**MBR PROJECT**  
RECEIVED  
10 APR 2001

ISSUED FOR CONSTRUCTION

A. 1.101 ARCHITECT		DATE	19-04-01
Contract: WESTMINSTER BRIDGE ROAD		BY	19-04-01
TITLE: BLOCK 'A' NZE ELEVATION FIRE BREAKS		DATE	19-04-01
© Aliscoil (CS) Ltd Aliscoil (CS) Ltd 174, (0)1889 804113 174, (0)1889 804113 174, (0)1889 804113		SCALE	1:100
Aliscoil (CS) Ltd 174, (0)1889 804113 174, (0)1889 804113		DWG No	286-173
		REV	A