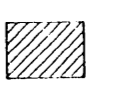


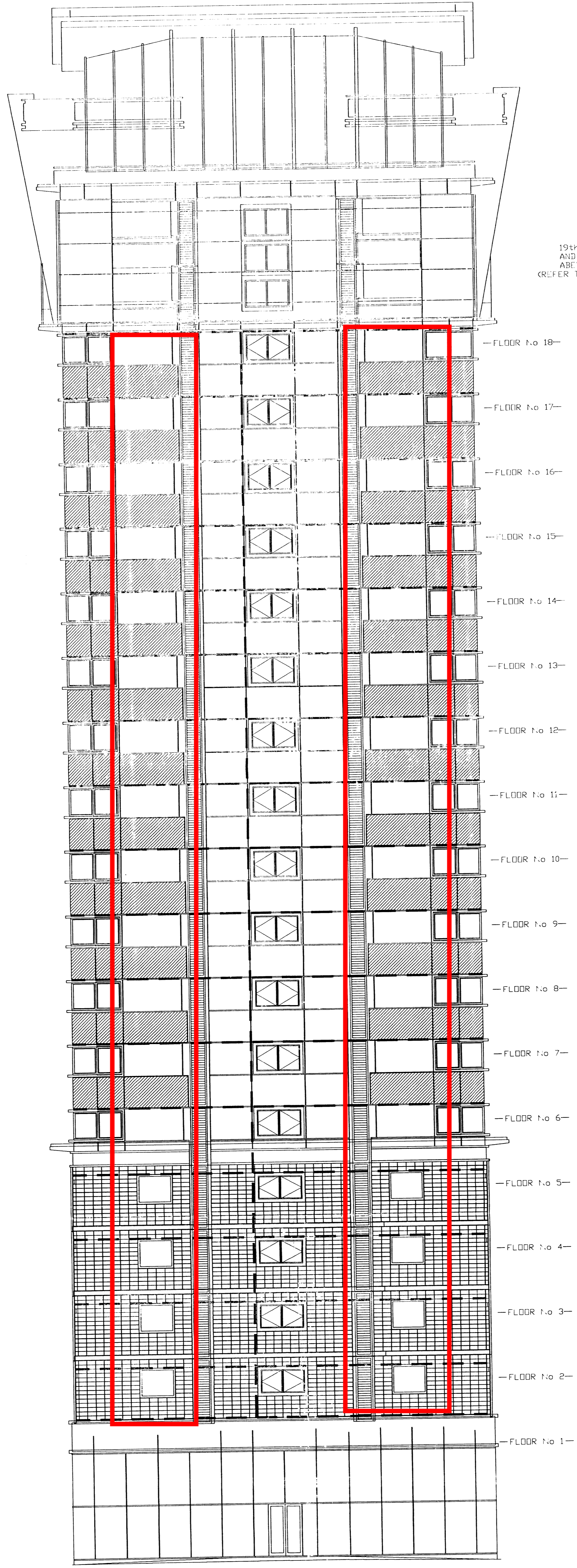


NOTE  
 FOR HORIZONTAL RAIL SETTING OUT SEE DWG 286-284  
 FOR VERTICAL RAIL SETTING OUT SEE DWG 286-280.

**KEY / COLOURS**

-  = RAL 9007
-  = STANDARD RAINSCREEN RAL 9006
- LOUVRE AND CHANNEL COULOUR XDBU25
-  = FIRE BREAK



19th FLOOR  
 AND ABOVE IN  
 ABEYANCE.  
 (REFER TO MHA DWGS)

- FLOOR No 18—
- FLOOR No 17—
- FLOOR No 16—
- FLOOR No 15—
- FLOOR No 14—
- FLOOR No 13—
- FLOOR No 12—
- FLOOR No 11—
- FLOOR No 10—
- FLOOR No 9—
- FLOOR No 8—
- FLOOR No 7—
- FLOOR No 6—
- FLOOR No 5—
- FLOOR No 4—
- FLOOR No 3—
- FLOOR No 2—
- FLOOR No 1—

SOUTH WEST ELEVATION

**WBE PROJECT**  
 RECEIVED  
 10 APR 2001

ISSUED FOR CONSTRUCTION

DATE	BY	CHKD
10 APR 2001		
PROJECT: WESTMINSTER BRIDGE ROAD TITLE: BLOCK 'A' S/W ELEVATION FIRE BREAKS DRAWN: JG SCALE: 1:100 DATE: 10 APR 2001 DWG. NO: 286-174 REV: A		