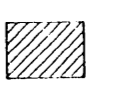


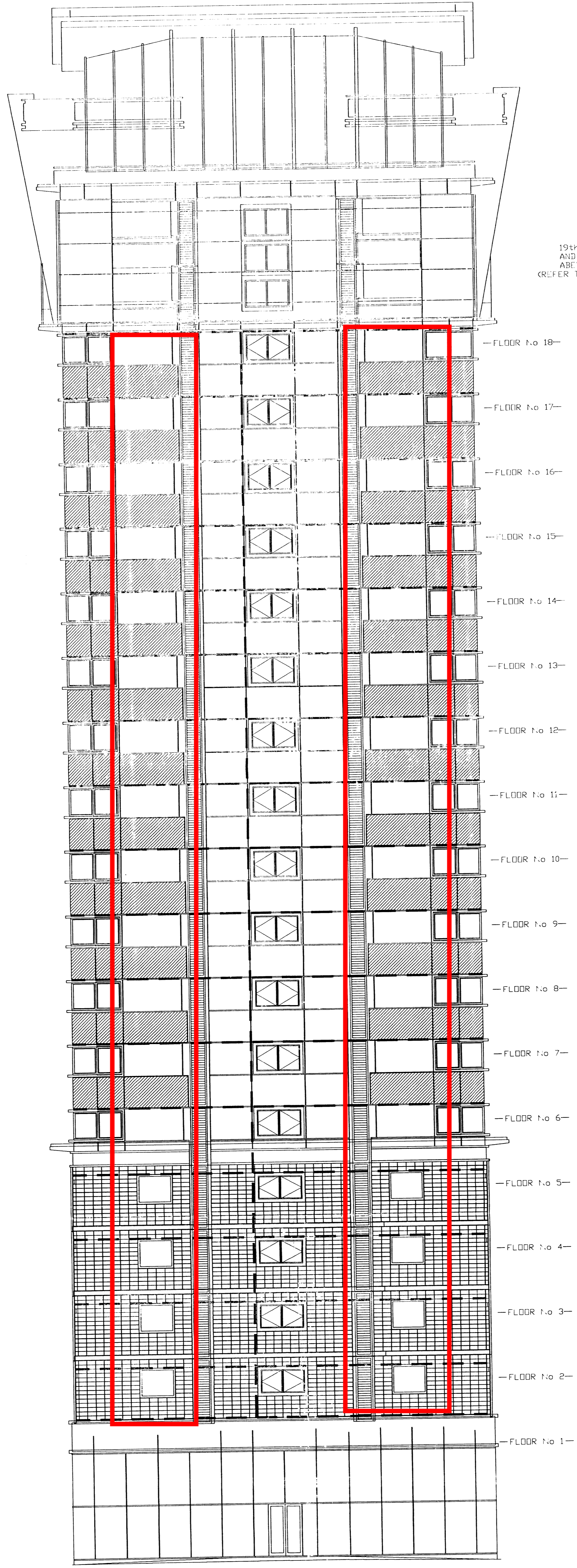


NOTE
 FOR HORIZONTAL RAIL SETTING OUT SEE DWG 286-284
 FOR VERTICAL RAIL SETTING OUT SEE DWG 286-280.

KEY / COLOURS

-  = RAL 9007
-  = STANDARD RAINSCREEN RAL 9006
- LOUVRE AND CHANNEL COULDER XDBU25
-  = FIRE BREAK



19th FLOOR
 AND ABOVE IN
 ABEYANCE.
 (REFER TO MHA DWGS)

- FLOOR No 18—
- FLOOR No 17—
- FLOOR No 16—
- FLOOR No 15—
- FLOOR No 14—
- FLOOR No 13—
- FLOOR No 12—
- FLOOR No 11—
- FLOOR No 10—
- FLOOR No 9—
- FLOOR No 8—
- FLOOR No 7—
- FLOOR No 6—
- FLOOR No 5—
- FLOOR No 4—
- FLOOR No 3—
- FLOOR No 2—
- FLOOR No 1—

SOUTH WEST ELEVATION

WBE PROJECT
 RECEIVED
 10 APR 2001

ISSUED FOR CONSTRUCTION

DATE	BY	CHKD
10 APR 2001		
TITLE BLOCK: 4A S/W ELEVATION FIRE BREAKS CONTRACT: WESTMINSTER BRIDGE ROAD © ALBERT (SBS) LTD ALBERT (SS) LTD 1000 WESTMINSTER BRIDGE ROAD WESTMINSTER, LONDON SW1E 6JG TEL: (01899) 864143 FAX: (01899) 864144 WWW: WWW.ALBERT.CO.UK DRAWN: GD SCALE: 1:100 DATE: 10 APR 2001 DWG. NO: 286-174 REV: A		