

materials key

- a brick
- b aluminium windows
- c vertical plain tile hanging
- d projecting brick sills
- e clay plain tile roof
- f existing splayed bay window
- g dilapidated conservatory

* previous window opening bricked up



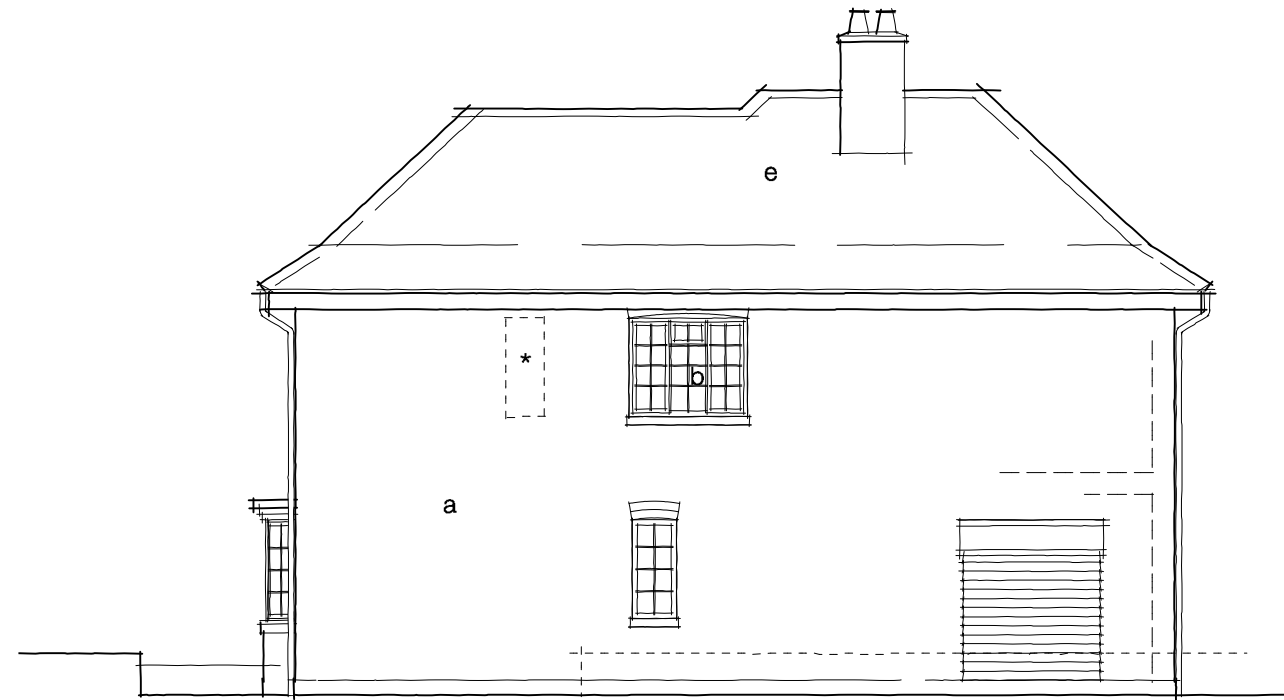
NORTH (FRONT) ELEVATION



EAST (SIDE) ELEVATION



SOUTH (REAR) ELEVATION



WEST (SIDE) ELEVATION