

existing deteriorating flat roof removed to form more robust construction, remove future access + maintenance issue and to create more head room to loft. existing roof pitch continued to form new ridge



NORTH (FRONT) ELEVATION

materials key

- a existing brick
- b new timber framed flush casement windows
- c vertical plain tile hanging
- d timber framed porch
- e timber infill covering
- f projecting brick sill as existing
- g black timber - extension
- h extended clay plain tile roof
- i rooflight
- j sliding doors
- k new timber framed bay window
- l replacement timber framed flush casement windows
- m brickwork to match existing

existing roof forms in grey

* reinstate window previously removed

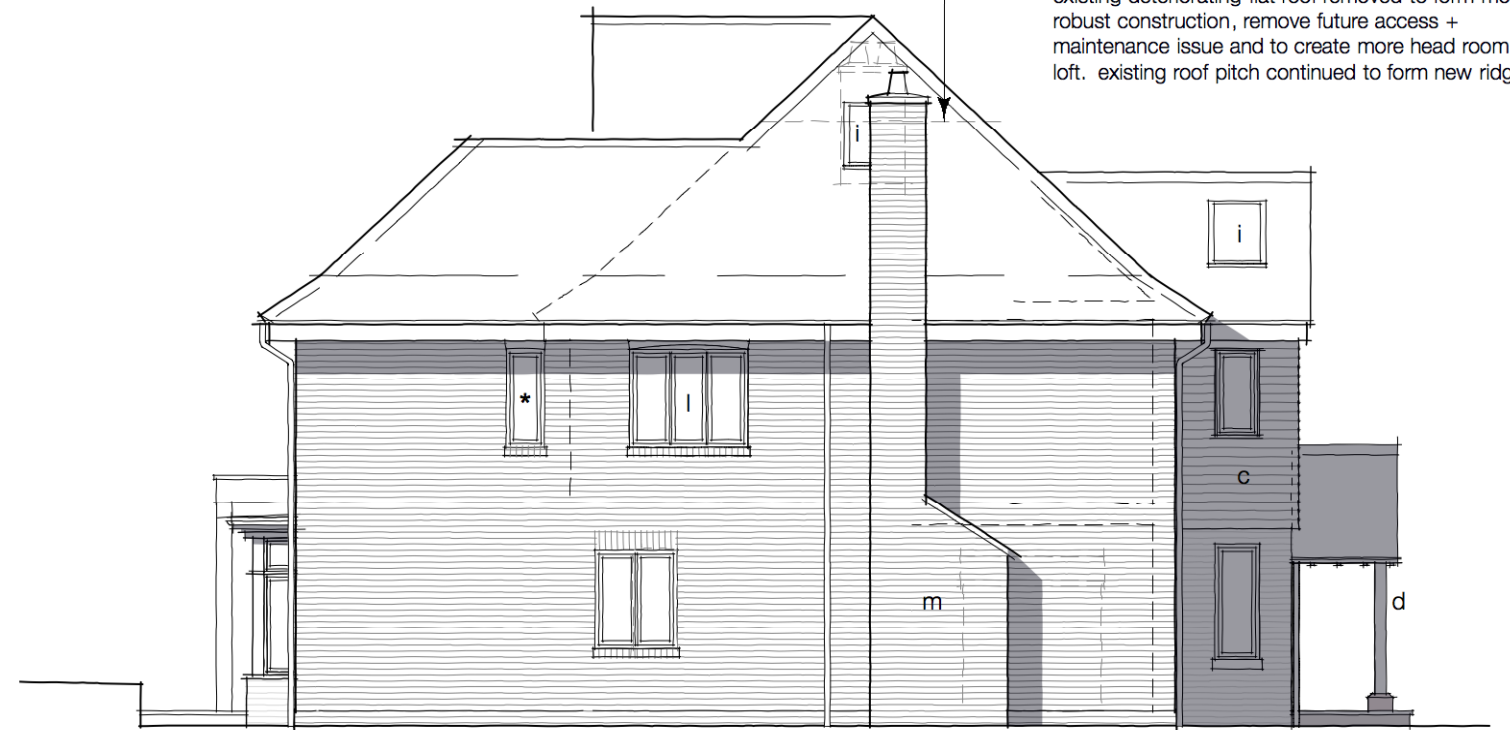


EAST (SIDE) ELEVATION



SOUTH (REAR) ELEVATION

existing deteriorating flat roof removed to form more robust construction, remove future access + maintenance issue and to create more head room to loft. existing roof pitch continued to form new ridge



WEST (SIDE) ELEVATION