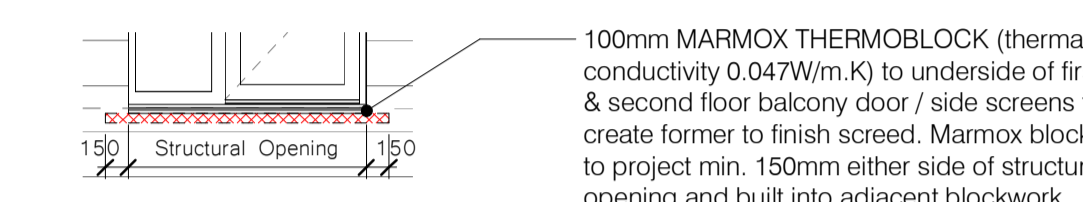


- Revisions
- L Roof terrace railings revised to 1100mm DaniAlu counterbalanced free standing system. 13 Apr'21
  - M Marmox Threshold Detail added. 13 May'21
  - N Cembrit cladding colour added to notes. 18 May'21
  - O Raised to Construction issue status following Wates design development review with Cardiff Living. 03 Jun'21



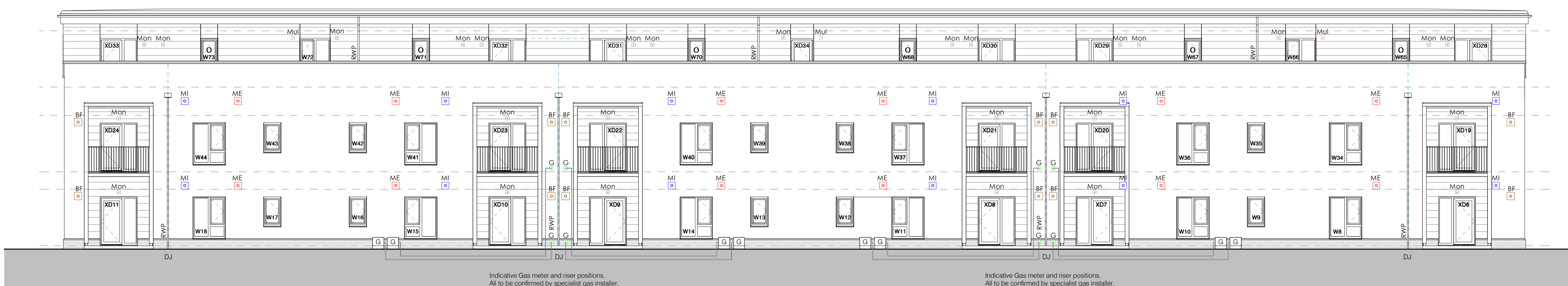
Front Elevation



Marmox Threshold Detail  
1 : 50

Airtightness Grommet Key

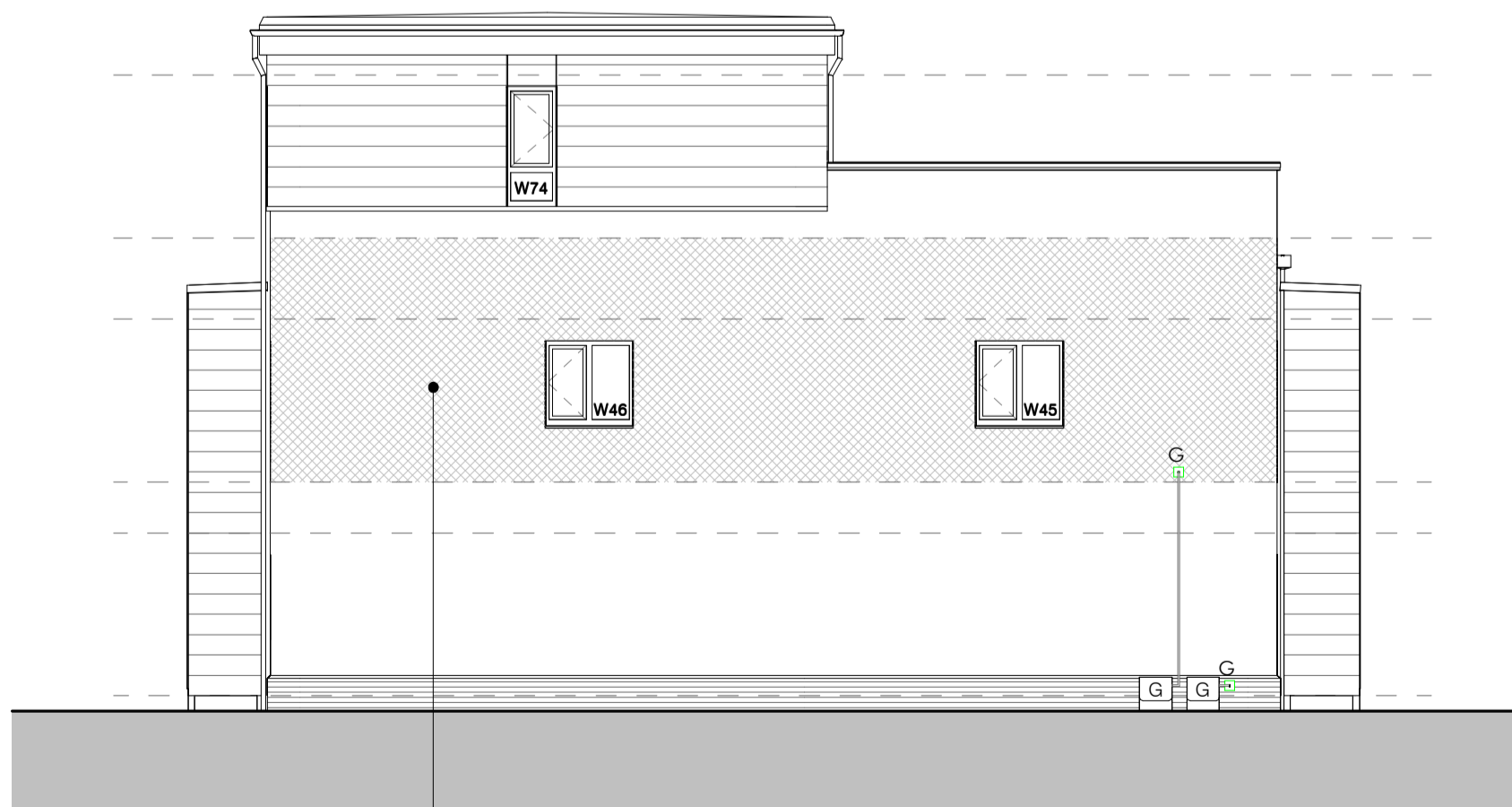
- G Incoming gas main pipe with Reflex 20 airtight pipe grommet (145 x 145mm perimeter based on 15-30mm outer diameter, size to be confirmed) sealed to blockwork internally with TESCON VANA tape prior to application of parge coat.
- BF Boiler flue terminal with EISEDICHT - HOTSchott aluminium butyl heat resistant sealing grommet (320 x 320mm perimeter based on 100 - 110mm diameter flue, size to be confirmed) sealed to blockwork internally with its self-adhesive flanges prior to application of parge coat.  
  
Boiler flue to be positioned to ensure minimum 300mm away from any opening and minimum 150mm away from a vertical rainwater downpipe (reduced to 75mm for appliances up to 5kW input). Positioning based on fanned draught balanced flue, to be confirmed with EMDS.
- MI MVHR Intake duct and 50mm ARMAFLEX insulation wrap with ROFLEX 250 airtight pipe grommet (300 x 300mm perimeter based on 220 - 270mm diameter penetration, size to be confirmed) sealed to blockwork internally with TESCON VANA tape prior to application of parge coat.
- ME MVHR Exhaust duct and 50mm ARMAFLEX insulation wrap with ROFLEX 250 airtight pipe grommet (300 x 300mm perimeter based on 220 - 270mm diameter penetration, size to be confirmed) sealed to blockwork internally with TESCON VANA tape prior to application of parge coat.  
  
MVHR Intake and Exhaust ducts to be positioned to ensure minimum 300mm away from any opening and a minimum 1000mm maintained between vertical terminals.
- Mon Electrical cable penetration with Kaflex Mono single cable grommet (145 x 145mm perimeter, based on 6-12mm outer diameter, size to be confirmed) sealed to blockwork internally with integrated self adhesive flanges prior to application of parge coat.
- Mul Electrical cable penetration with Kaflex Multi cable grommet (145 x 145mm perimeter, based on 6-12mm outer diameter, size to be confirmed, for up to 16no. cables) sealed to blockwork internally with integrated self adhesive flanges prior to application of parge coat.
- G Unibox Universal Gas Meter Box.  
  
Refer to EMDS M&E layouts for identification of specific electrical fittings and specification.



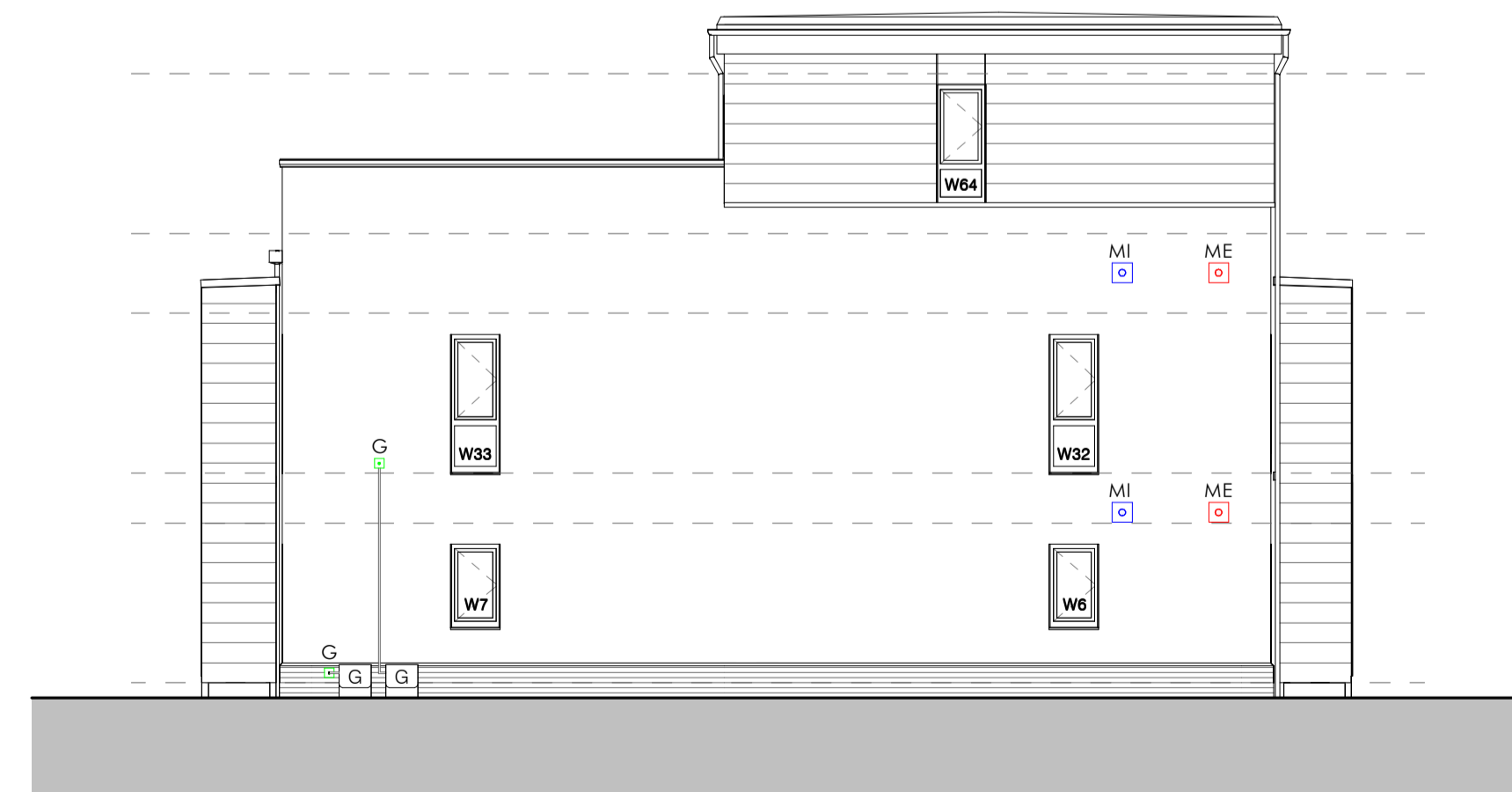
Rear Elevation

Elevation Material Key

- Walls:**  
Facing Brickwork Leicester Weathered Red Stock brick plinth.  
Mortar Colour - Natural.  
Render Off-white in scraped finish (grain size 1.5mm).  
DJ Day Joints positioned behind rainwater pipes. Locations to be confirmed with specialist subcontractor.
- Fibre Cement Cladding Horizontal Cembrit fibre cement rainscreen cladding board on Hilli bracketing system, colour - P545 Original Sand.
- Windows and Doors:**  
Windows Triple glazed windows in silver grey finish (RAL 7001).  
External Doors Triple glazed doors in silver grey finish (RAL 7001).
- Roofs:**  
Flat Roof Bitumen insulated roof system, Colour Dark Grey with metal edge trim.
- Rainwater Goods:**  
Gutters & Downpipes Deepflow, PVCu, Colour Black.
- Fascias & Soffits:** P.p.c aluminium, Colour Mid Grey.
- Roof Terrace & Balcony Guarding:** Mid grey powder coated galvanised steel.



Side Elevation



Side Elevation

Notes:  
This drawing is for indicative purposes only and co-ordination of incoming services with air tightness grommets. Exact locations to be confirmed. Refer to EMDS Building Services Consulting Engineers' drawings for M&E layouts and specification.

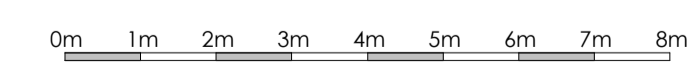
Drawings must not be scaled and any discrepancies must be reported immediately.

The drawing is to be read in conjunction with all other relevant project drawings and schedules.

All cavity barriers, fire stopping and sealants for service penetrations to be inspected and independently certified by accredited fire consultant and provision at agreed locations confirmed with local authority building control prior to concealment. All fire stopping for cable trays, ductworks, etc. must also be LPCB approved for compliance with Cardiff CC insurer's requirements.

Mounting (boxes) for all M&E, mineral fibre zones, fire barriers, day joints and movement joint requirements to be to manufacturers' detailed design & specification.

**CONSTRUCTION**



Refer to Cambria Engineers' Apartment Block Second Floor Construction drawing for further details.

**pentan**  
architects

22 Cathedral Road  
Cardiff CF11 9LJ

t: 029 2030 9010  
info@pentan.co.uk

Project	Highfields, Heath, Cardiff	Date	Jan '19
Client	Wates Residential	Scale	As indicated @ A1
Drawing Title	Apartment Block Elevations	Drawing No.	3511 / C / 220
Rev.	O	Rev.	O

NOTES Do not scale. All dimensions are in millimetres unless stated otherwise