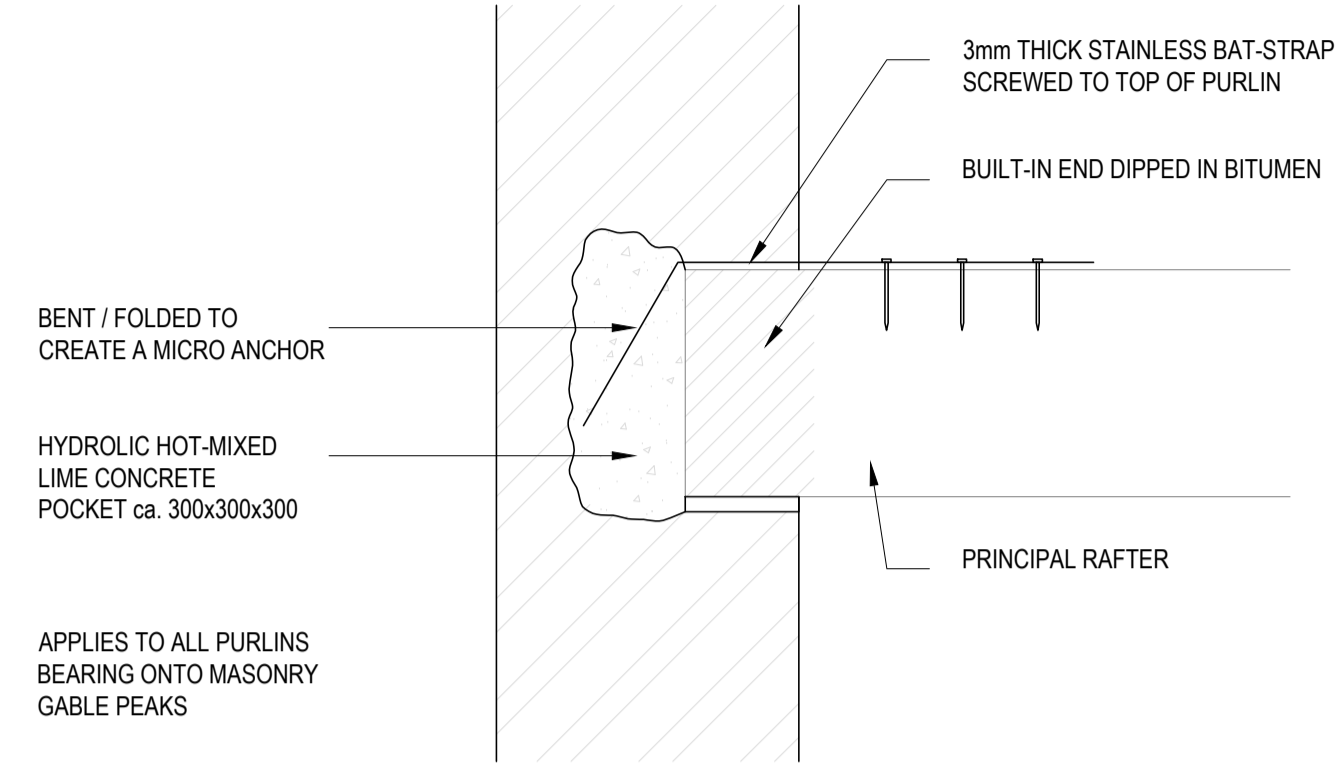
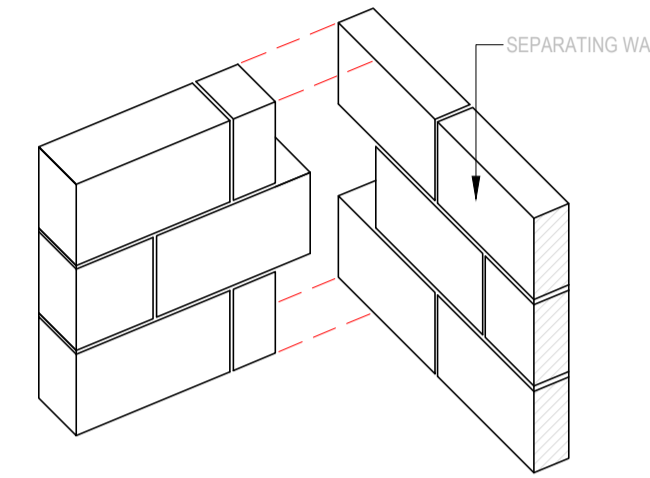


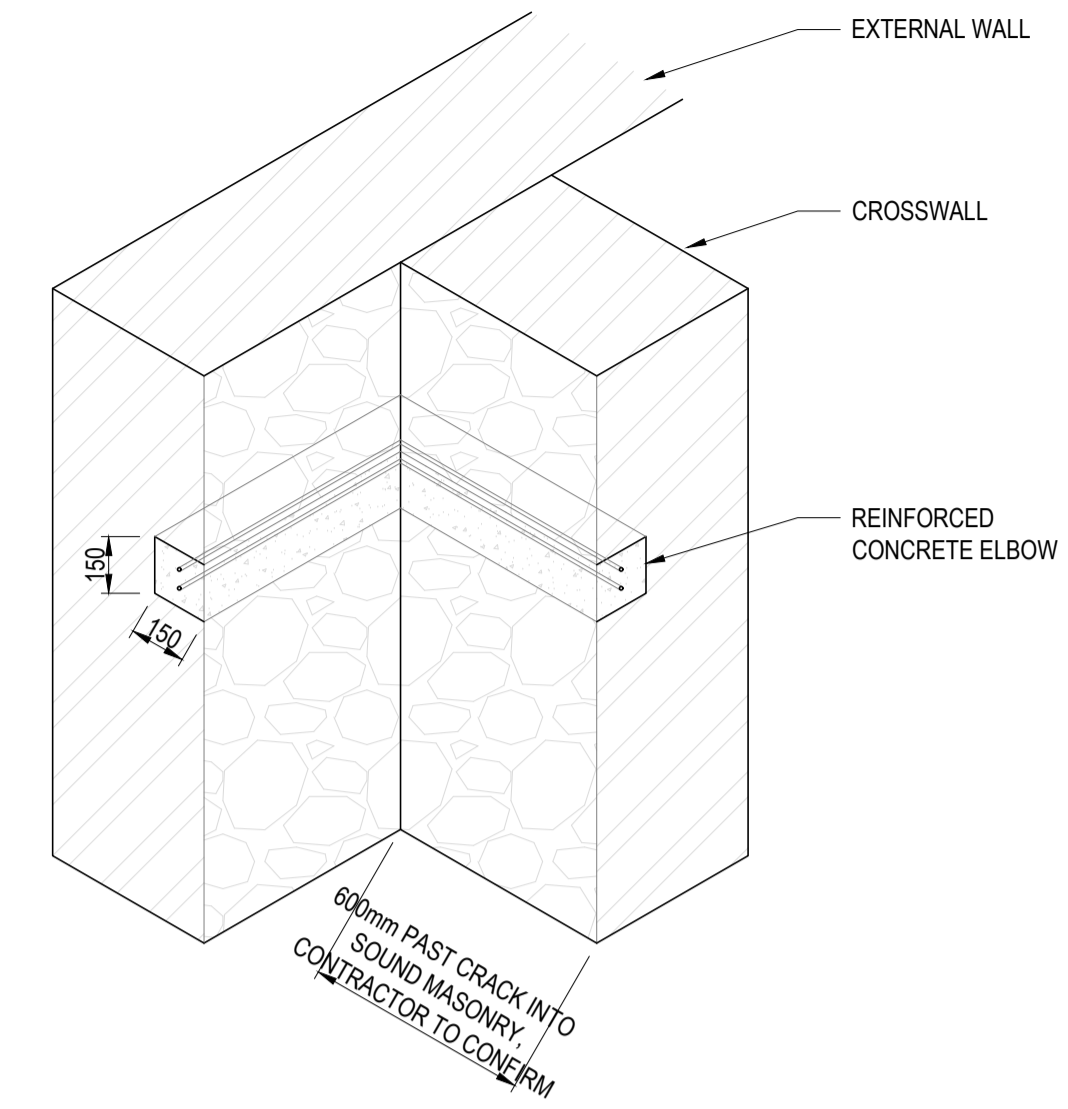
**DETAIL 06:**  
**REINFORCED CONCRETE LINTELS WITH STONE FACING**  
 SCALE 1:10



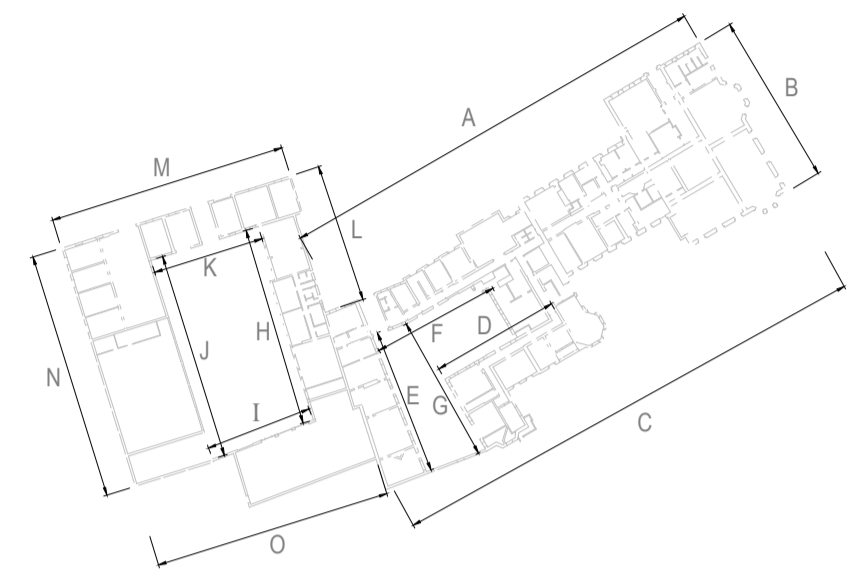
**DETAIL 07:**  
**ANCHOR FOR PURLINS BEARING ONTO MASONRY**  
 SCALE 1:10



**DETAIL 08:**  
**TOOTH BONDED WALL CONNECTION**  
 SCALE 1:20



**DETAIL 09:**  
**TYPICAL ELBOW CROSSWALL BOND REPAIR**  
 SCALE 1:20



**GENERAL NOTES:**

1. THIS DRAWING IS TO BE READ IN CONJUNCTION WITH ALL RELEVANT ARCHITECTS AND ENGINEERS DRAWINGS AND SPECIFICATIONS.
2. DO NOT SCALE THIS DRAWING. ANY AMBIGUITIES, OMISSIONS AND ERRORS ON DRAWINGS SHALL BE BROUGHT TO THE ENGINEERS ATTENTION IMMEDIATELY. ALL DIMENSIONS MUST BE CHECKED / VERIFIED ON SITE.
3. ALL DIMENSIONS ARE IN MILLIMETRES UNLESS NOTED OTHERWISE.
4. FOR GENERAL NOTES REFER TO DRAWING.

Rev.	Description	Date	By	Chkd.



28 Lowther St Kendal, Cumbria, LA9 4DH  
 01539 724823  
 kendal@curtins.com  
 www.curtins.com

Structures • Civils • Environmental • Infrastructure • Transport Planning • Sustainability • Expert Advisory Services  
 Birmingham • Bristol • Cardiff • Douglas • Dublin • Edinburgh • Glasgow • Kendal • Leeds • Liverpool • London • Manchester • Nottingham

Status: **FOR COORDINATION**

Client: **SHENTON GROUP**

Project: **CUERDEN HALL**

Orig Title: **TYPICAL REPAIR DETAILS, MASONRY**

Project No:	Size:	Date:	Drawn By:	Designed By:	Checked By:
077572	A1	15/03/2021	SJ	SJ	DC

Project Code:	Originator:	Zone:	Level:	Type:	Discipline:	Category / Number:	Rev:
077572	CUR	ZZ	ZZ	DR	S	27002	01

I:\650\Projects\_NEW\PROJECTS\_AWAITING\_BRIEF\077572\_Cuerden\_Hall\04\_Production\A\_Mobile\_Drawings\SCAD