

**Notes:**  
 Drawings are based on survey data and may not accurately represent what is physically present.  
 Do not scale from this drawing. All dimensions are to be verified on site before proceeding with the work.  
 All dimensions are in millimeters unless noted otherwise.  
 Purcell shall be notified in writing of any discrepancies.

**Key Plan**  
 not to scale  
**Repair Key**

Drawings are to be read in conjunction with the Roof repair drawing and the Structural Engineer reports.

**Generally**  
 All external masonry elevations are to receive DOFF treatment to clean algae and biological growths off masonry.

All copings to be checked. Allowance generally to remove embedded metalwork, rebed and pin copings and point joints. Allowance made for replacement and indents.

All external fixtures and fittings are to be removed from the elevations and made good.  
 An additional provisional sum of 20% to entire works noted should be allowed above items stated to cover access restrictions.

Type A1 - Repointing standard brickwork joints in lime mortar  
 Type A2 - Repointing fine ashlar joints in lime mortar.

Type B1 - Indent repair to brickwork.  
*Handmade clay brickwork to match historic brickwork in coursing, size, colour and texture.*

Type B2 - Indent repair to Stone Ashlar  
*Stonework to match colour, texture, grain and density of historic stonework*  
 Type B3 - Indent repair to stone moulding  
*Stonework to match colour, texture, grain, density and profile of existing stonework. Stainless steel pins.*

Type B4 - Composite Indent Repair to stone moulding (surround or string course)  
*Composite repair to include for removal of existing embedded ironwork, replacement of stainless steel pins at regular centres. Historic material to undergo analysis for composition.*

Type B5 - Defrass stonework and complete mortar repair.  
*Mortar repair to match moulding, colour, texture of adjacent stonework.*

Type C1 - Doff clean  
 Type C2 - Remove paint off stonework with a poultice paint remover and Doff clean.  
 Type C3 - Clean stonework  
 Type C4 - Poultice clean to remove surface salts within masonry

Type D - Remove fixture off elevation and make good masonry / stonework behind.  
 Type D2 - Remove fitting from wall and complete stone / brick indent.

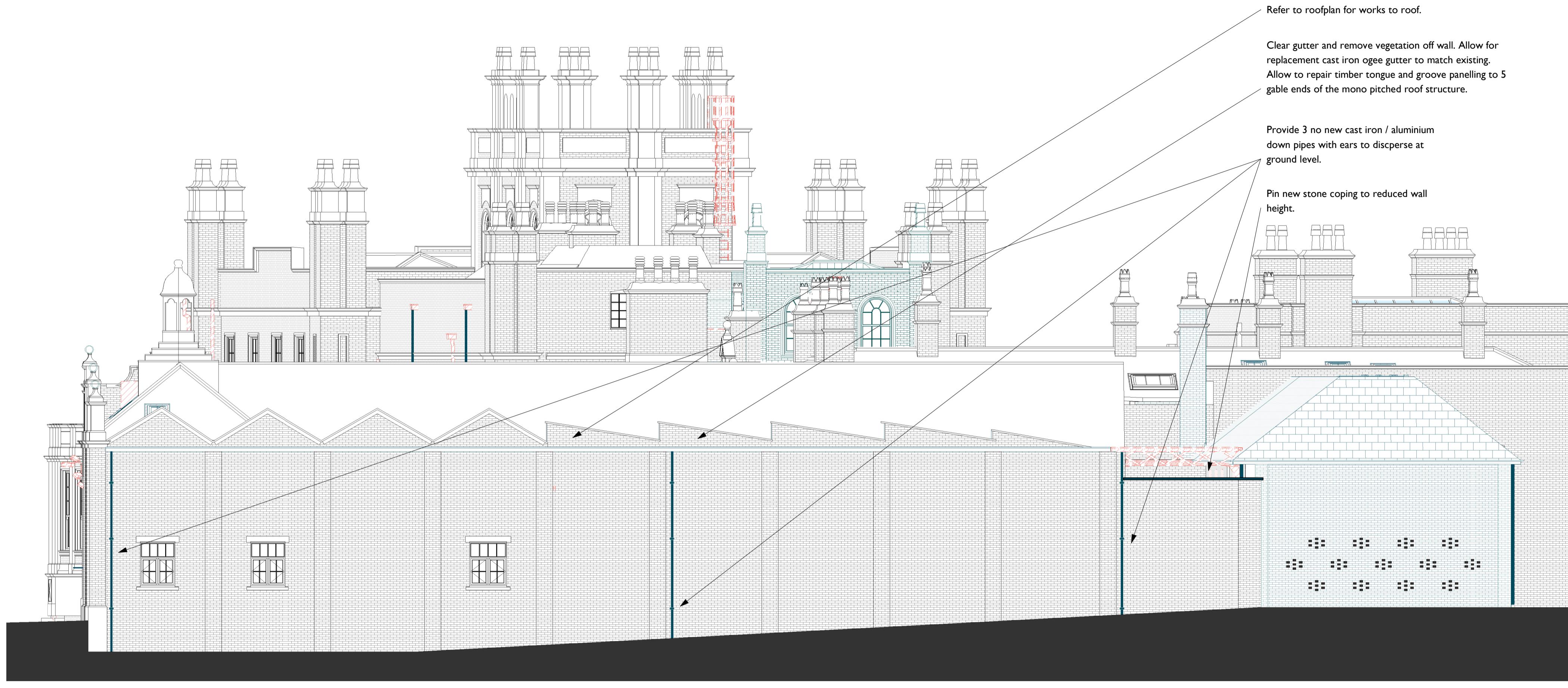
Type E - Pin Crack to stonework

Type A1 - Repointing standard brickwork joints - 50%  
 Type B1 - Indent repair to brickwork. - 15%  
 Type C1 - Doff clean - 100%

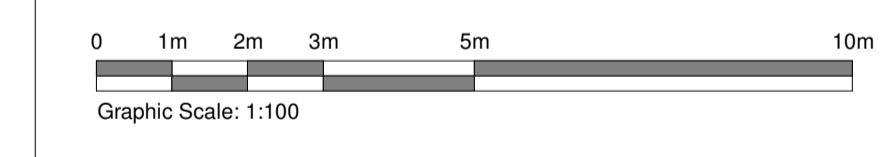
Refer to roofplan for works to roof.  
 Clear gutter and remove vegetation off wall. Allow for replacement cast iron ogee gutter to match existing. Allow to repair timber tongue and groove panelling to 5 gable ends of the mono pitched roof structure.

Provide 3 no new cast iron / aluminium down pipes with ears to disperse at ground level.

Pin new stone coping to reduced wall height.

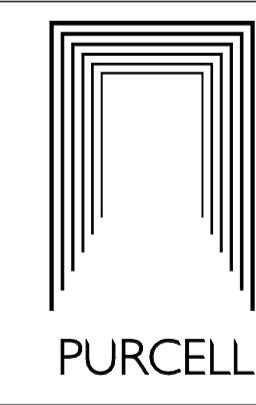


**1 Stable Yard Elevation 2 (SE2) Repairs w/Demo**  
 2200 | 1 : 100



|     |          |              |
|-----|----------|--------------|
| P01 | 21/04/21 | For Planning |
| REV | DATE     | DESCRIPTION  |

**CLIENT**  
 Colin Shenton  
**PROJECT**  
 Cuerden Hall, Chorley  
**JOB NUMBER**  
 240729



**TITLE**  
 Proposed Repair Elevations

|      |          |              |       |         |
|------|----------|--------------|-------|---------|
| SIZE | SCALE    | LAST REVISED | DRAWN | CHECKED |
| A1L  | As Shown | 07/04/2021   | ZB    |         |

**REV** SUITABILITY/REASON FOR ISSUE  
**P01 S04 - For Planning**  
**DRAWING NUMBER**  
 240729-PUR-00-XX-DR-A-2200

St James, 79 Oxford Street, Manchester, M1 4FQ  
 © PURCELL 2019. PURCELL IS THE TRADING NAME OF PURCELL ARCHITECTURE LTD.

Modern inappropriate brickwork repair to parapet and brickwork below. Allow to remove and match appropriate hand made clay brickwork to match historic brickwork.

Lead cupola to be repaired. Allow for new leadwork to roof and base with repairs to sarking boards and sub-structure. Allow 75% replacement of ornate timber structure and redecorate.

Type A1 - Repointing standard brickwork joints - 100%  
 Type B1 - Indent repair to brickwork. - 15%  
 Type C1 - Doff clean - 100%  
 Type C3 - All stone on elevation.

Defrass stonework, and allow to complete shallow mortar repairs to face with armatures. B5

Bond together brickwork at 2 no joints on elevation.

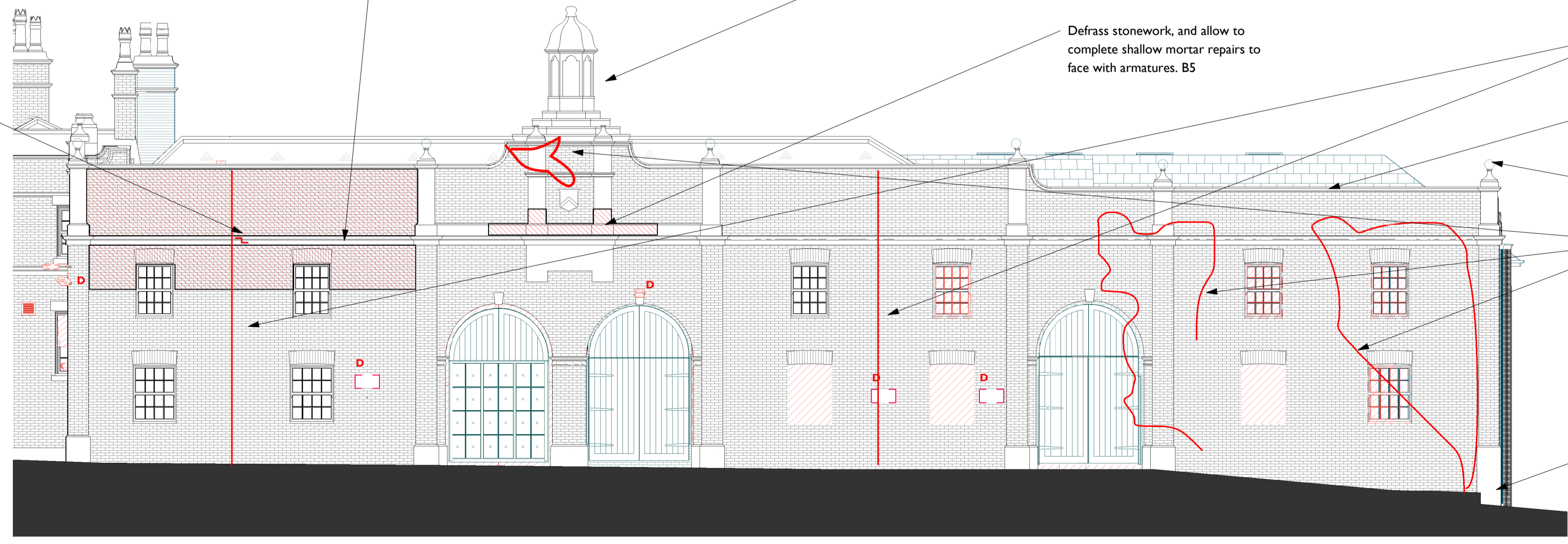
Allow for 15% replacement of stone copings to match existing moulded profile. Remove, re-bed and re-pin removing embedded metalwork.

Re-instate stone finials

Remove vegetation in front of wall and treats roots. Allowance for repairs to fabric behind

Rebuild small section of ashlar stone wall with copings approx 1m in length and 800mm high. Allow for new foundations.

Pin crack to stone string course. Point joints to stone string course.



**2 Stableyard Elevation 1 (SE1) Repairs w/Demo**  
 2200 | 1 : 100