



Type A1 - Repointing standard brickwork joints - 100%
 Type B1 - Indent repair to brickwork. - 15%
 Type C1 - Doff clean - 100%
 Type C3 - Clean all stone on elevation.

Allow to remove coping stones and iron cramps, re-pin full length of elevation. Point joints.

Allow for 15% replacements to cover breakages and 5 no stone indents.

Repoint all joints to stone string courses to full elevation and turrets. Allow to defrass stonework.

Allow for existing cast iron rainwater water pipe to be carefully removed and re-instated in cast iron. New hopper to match adjacent hopper.

C2 - Ashlar stone bay window and side of porch to be cleaned. Allow for 10 linear metres of fine ashlar patch pointing to joints in addition to repointing of joints to copings. Provisional sum of works to cover roof.

Remove modern inappropriate window and stonework. Install new windows to elevation with stone mouldings and cill.

Stone plinth to elevation.

C1 - Doff clean 100%
 C3 - Clean 100%
 Points all joints between stone uprights and slabs.
 Allow for 10 no stone indents to uprights with replacement of cast iron ventilation grills.

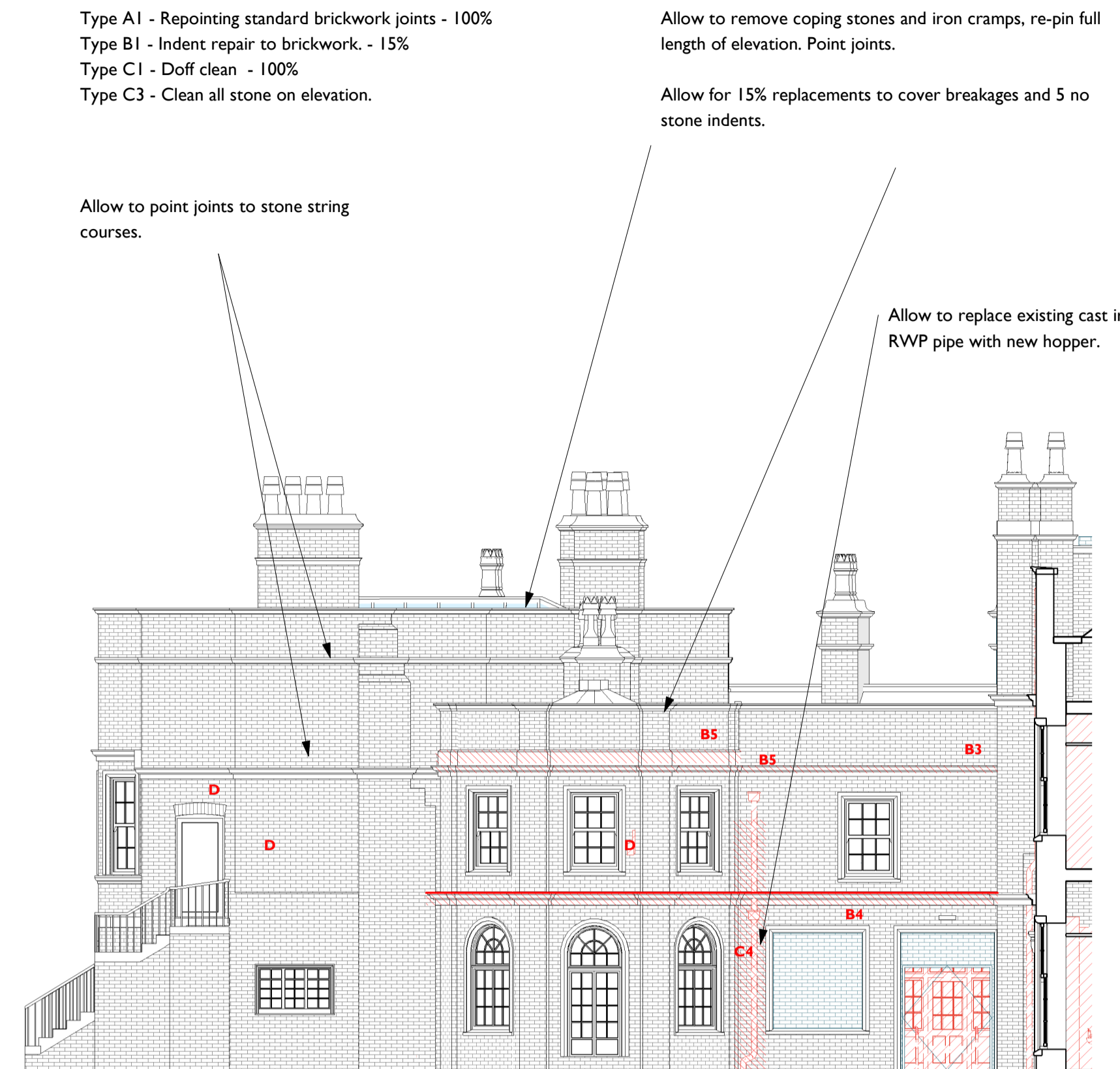
Install new double slim timber doors to replace existing modern doors. Glazing repair to remove fan.

Vegetation to turret to be removed. Provisional sum for repairs.

Existing downpipe to be carefully dismantled, repaired and redecorated.

Remove existing waste pipe and indent stone moulding into string course.

1 Wyatt Wing Elevation 1 (WE1) Repairs w/Demo
 2206 I : 100



Type A1 - Repointing standard brickwork joints - 100%
 Type B1 - Indent repair to brickwork. - 15%
 Type C1 - Doff clean - 100%
 Type C3 - Clean all stone on elevation.

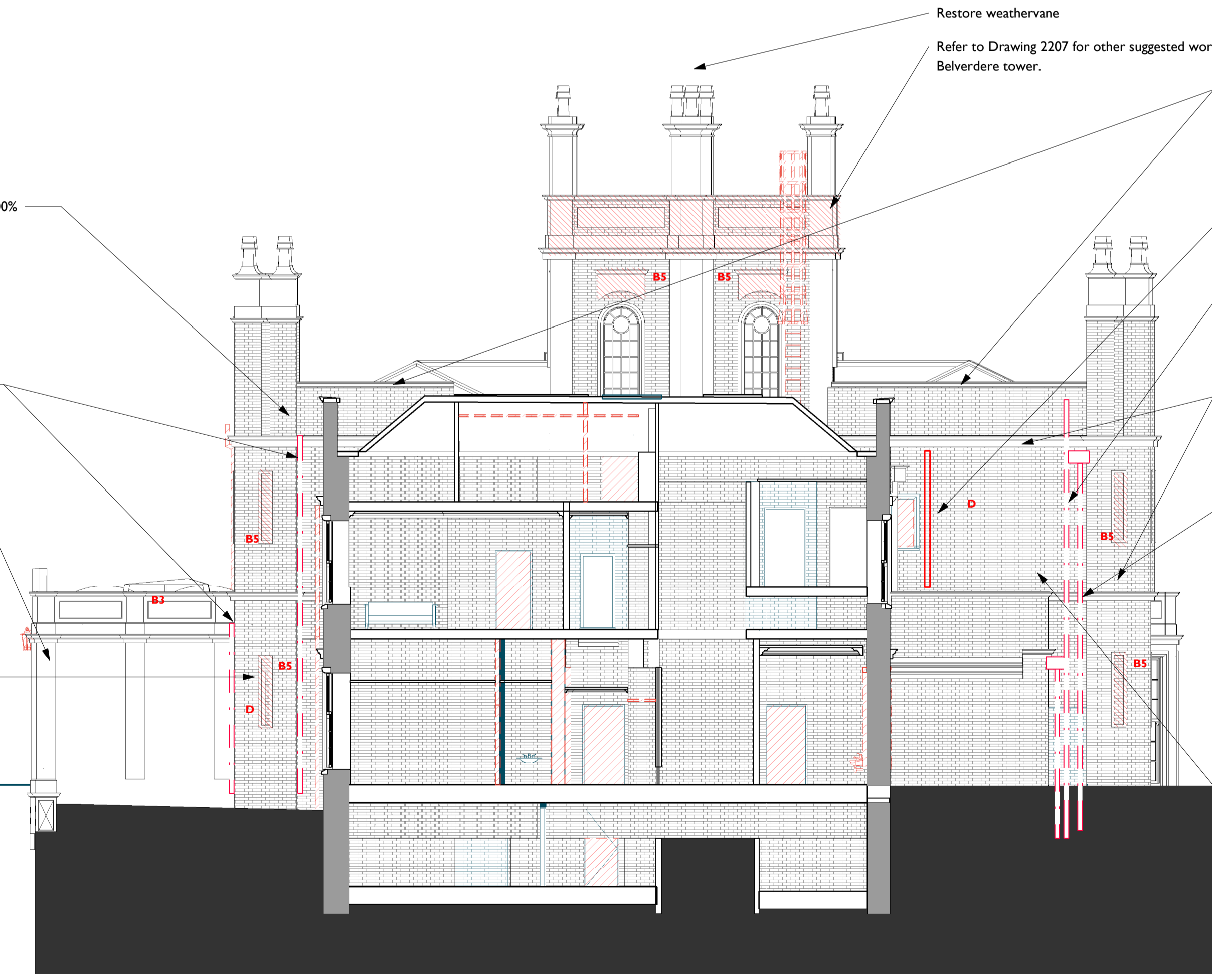
Allow to remove coping stones and iron cramps, re-pin full length of elevation. Point joints.

Allow for 15% replacements to cover breakages and 5 no stone indents.

Allow to point joints to stone string courses.

Allow to replace existing cast iron RWP pipe with new hopper.

3 Elevation 2 - a
 2206 I : 100



Type A1 - Repointing standard brickwork joints - 100%
 Type B1 - Indent repair to brickwork. - 15%
 Type C1 - Doff clean - 100%
 Type C3 - Clean all stone on elevation.

Allow to remove 2 No existing svp and indent string course. Make good stonework.

C3 Ashlar stonework to the entire porch to be cleaned with 10% fine ashlar repointing (Type A1)

Replace former window with a new piece of stone to match detail above.

Restore weathervane

Refer to Drawing 2207 for other suggested works to the Belvedere tower.

Allow to remove coping stones and iron cramps, re-pin full length of elevation. Point joints.

Allow for 15% replacements to cover breakages and 5 no stone indents.

Tooth in brickwork.

Remove existing SVP and indent stonework at string courses.

String courses to be repointed.

Existing cast iron rainwater pipe to be repaired. Allow for new in cast iron. Altered to discharge on conservatory roof.

Type A1 - Repointing standard brickwork joints - 100%
 Type B1 - Indent repair to brickwork. - 15%
 Type C1 - Doff clean - 100%
 Type C3 - Clean all stone on elevation.

2 Wyatt Wing Elevation 2 (WE2) Repairs w/Demo
 2206 I : 100

Notes:
 Drawings are based on survey data and may not accurately represent what is physically present.

Do not scale from this drawing. All dimensions are to be verified on site before proceeding with the work.

All dimensions are in millimeters unless noted otherwise.

Purcell shall be notified in writing of any discrepancies.

Key Plan
 not to scale

Repair Key

Drawings are to be read in conjunction with the Roof repair drawing and the Structural Engineer reports.

Generally

All external masonry elevations are to receive DOFF treatment to clean algae and biological growths off masonry.

All copings to be checked. Allowance generally to remove embedded metalwork, rebbed and pin copings and point joints. Allowance made for replacement and indents.

All external fixtures and fittings are to be removed from the elevations and made good.

An additional provisional sum of 20% to entire works noted should be allowed above items stated to cover access restrictions.

Type A1 - Repointing standard brickwork joints in lime mortar
 Type A2 - Repointing fine ashlar joints in lime mortar.

Type B1 - Indent repair to brickwork.
Handmade clay brickwork to match historic brickwork in coursing, size, colour and texture.

Type B2 - Indent repair to Stone Ashlar
Stonework to match colour, texture, grain and density of historic stonework

Type B3 - Indent repair to stone moulding
Stonework to match colour, texture, grain, density and profile of existing stonework. Stainless steel pins.

Type B4 - Composite Indent Repair to stone moulding (surround or string course)
Composite repair to include for removal of existing embedded ironwork, replacement of stainless steel pins at regular centres. Historic material to undergo analysis for composition.

Type B5 - Defrass stonework and complete mortar repair.
Mortar repair to match moulding, colour, texture of adjacent stonework.

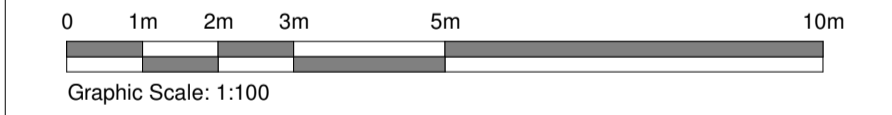
Type C1 - Doff clean
 Type C2 - Remove paint off stonework with a poultice paint remover and Doff clean.

Type C3 - Clean stonework
 Type C4 - Poultice clean to remove surface salts within masonry

Type D - Remove fixture off elevation and make good masonry / stonework behind.

Type D2 - Remove fitting from wall and complete stone / brick indent.

Type E - Pin Crack to stonework



P01	21/04/21	For Planning
REV	DATE	DESCRIPTION

CLIENT
 Colin Shenton

PROJECT
 Cuerden Hall, Chorley

JOB NUMBER
 240729

PURCELL

TITLE
 Proposed Repair Elevations Sheet 07

SIZE	SCALE	LAST REVISED	DRAWN	CHECKED
A1L	As Shown	07/04/2021	ZB	ZB

REV SUITABILITY/REASON FOR ISSUE
P01 S04 - For Planning

DRAWING NUMBER
 240729-PUR-00-XX-DR-A-2206