

Type A1 - Repointing standard brickwork joints - 100%
 Type B1 - Indent repair to brickwork - 10%
 Type C1 - Doff clean - 100%

Notes:
 Drawings are based on survey data and may not accurately represent what is physically present.
 Do not scale from this drawing. All dimensions are to be verified on site before proceeding with the work.
 All dimensions are in millimeters unless noted otherwise.
 Purcell shall be notified in writing of any discrepancies.

Key Plan:
 not to scale
 Drawings are to be read in conjunction with the Roof repair drawing and the Structural Engineer reports.

Generally:
 All external masonry elevations are to receive DOFF treatment to clean algae and biological growths off masonry.

All copings to be checked. Allowance generally to remove embedded metalwork, rebed and pin copings and point joints. Allowance made for replacement and indents.

All external fixtures and fittings are to be removed from the elevations and made good.

An additional provisional sum of 20% to entire works noted should be allowed above items stated to cover access restrictions.

Type A1 - Repointing standard brickwork joints in lime mortar
 Type A2 - Repointing fine ashlar joints in lime mortar.

Type B1 - Indent repair to brickwork.
Handmade clay brickwork to match historic brickwork in coursing, size, colour and texture.

Type B2 - Indent repair to Stone Ashlar
Stonework to match colour, texture, grain and density of historic stonework

Type B3 - Indent repair to stone moulding
Stonework to match colour, texture, grain, density and profile of existing stonework. Stainless steel pins.

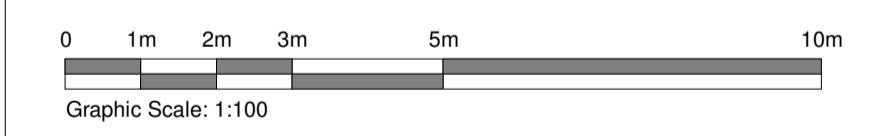
Type B4 - Composite Indent Repair to stone moulding (surround or string course)
Composite repair to include for removal of existing embedded ironwork, replacement of stainless steel pins at regular centres. Historic material to undergo analysis for composition.

Type B5 - Defrass stonework and complete mortar repair.
Mortar repair to match moulding, colour, texture of adjacent stonework.

Type C1 - Doff clean
 Type C2 - Remove paint off stonework with a poultice paint remover and Doff clean.
 Type C3 - Clean stonework
 Type C4 - Poultice clean to remove surface salts within masonry

Type D - Remove fixture off elevation and make good masonry / stonework behind.
 Type D2 - Remove fitting from wall and complete stone / brick indent.

Type E - Pin Crack to stonework



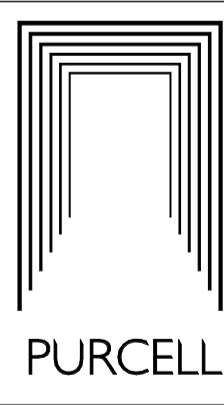
PO1	21/04/21	For Planning
REV	DATE	DESCRIPTION

CLIENT
 Colin Shenton

PROJECT
 Cuerden Hall, Chorley

JOB NUMBER
 240729

TITLE
 Proposed Repair Elevations Sheet 04



SIZE	SCALE	LAST REVISED	DRAWN	CHECKED
A1L	As Shown	07/04/2021	ZB	

REV P01 S04 - For Planning

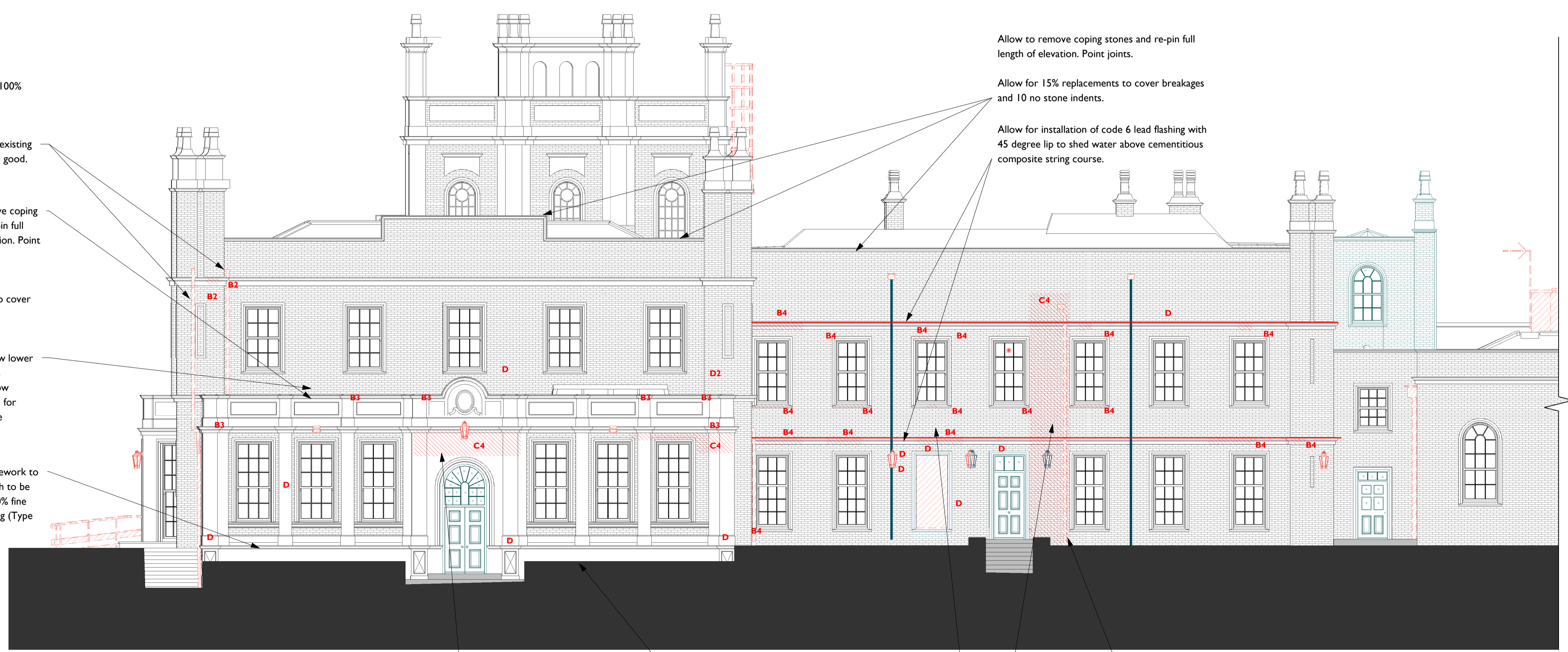
DRAWING NUMBER
 240729-PUR-00-XX-DR-A-2203

St James, 79 Oxford Street, Manchester, M1 4FQ
 © PURCELL 2019. PURCELL IS THE TRADING NAME OF PURCELL ARCHITECTURE LTD.

1 1717 House Elevation I (HEI) Repairs 2 w/Demo
 2203 | 1:100

Type A1 - Repointing standard brickwork joints - 100%
 Type B1 - Indent repair to brickwork - 10%
 Type C1 - Doff clean - 100%

Remove 2 No. existing SVP's and make good.
 Allow to remove coping stones and re-pin full length of elevation. Point joints.
 Allow for 5% replacements to cover breakages
 Access to review lower half of windows restricted. Allow provisional sum for repairs to stone mouldings and brickwork.
 C3 Ashlar stonework to the entire porch to be cleaned with 10% fine ashlar repointing (Type A1)



2 1717 House Elevation I (HEI) Repairs w/Demo
 2203 | 1:100