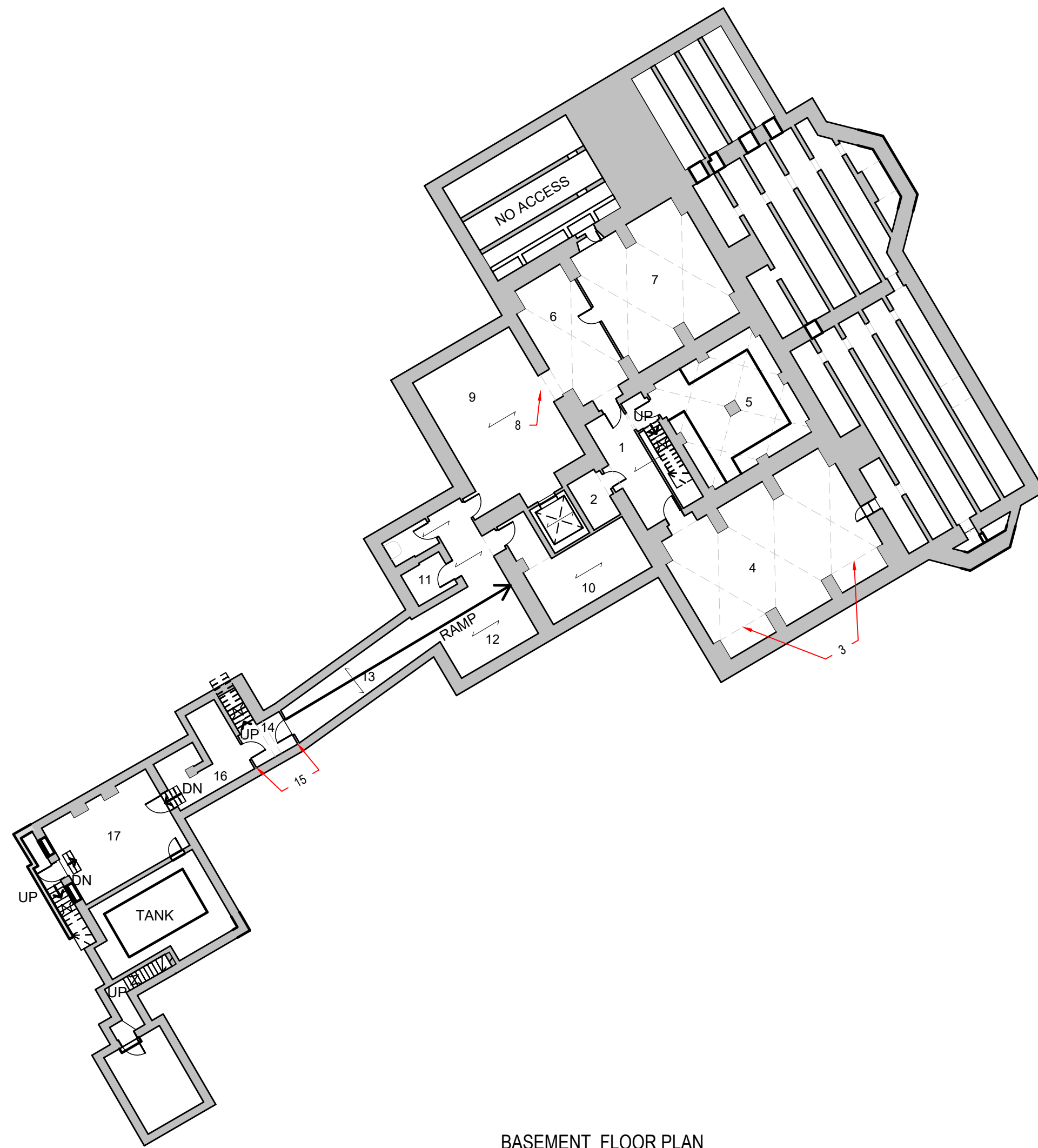


GENERAL NOTES:

1. THIS DRAWING IS TO BE READ IN CONJUNCTION WITH ALL RELEVANT ARCHITECTS AND ENGINEERS DRAWINGS AND SPECIFICATIONS.
2. DO NOT SCALE THIS DRAWING. ANY AMBIGUITIES, OMISSIONS AND ERRORS ON DRAWINGS SHALL BE BROUGHT TO THE ENGINEERS ATTENTION IMMEDIATELY. ALL DIMENSIONS MUST BE CHECKED / VERIFIED ON SITE.
3. ALL DIMENSIONS ARE IN MILLIMETRES UNLESS NOTED OTHERWISE.
4. FOR GENERAL NOTES REFER TO DRAWING.



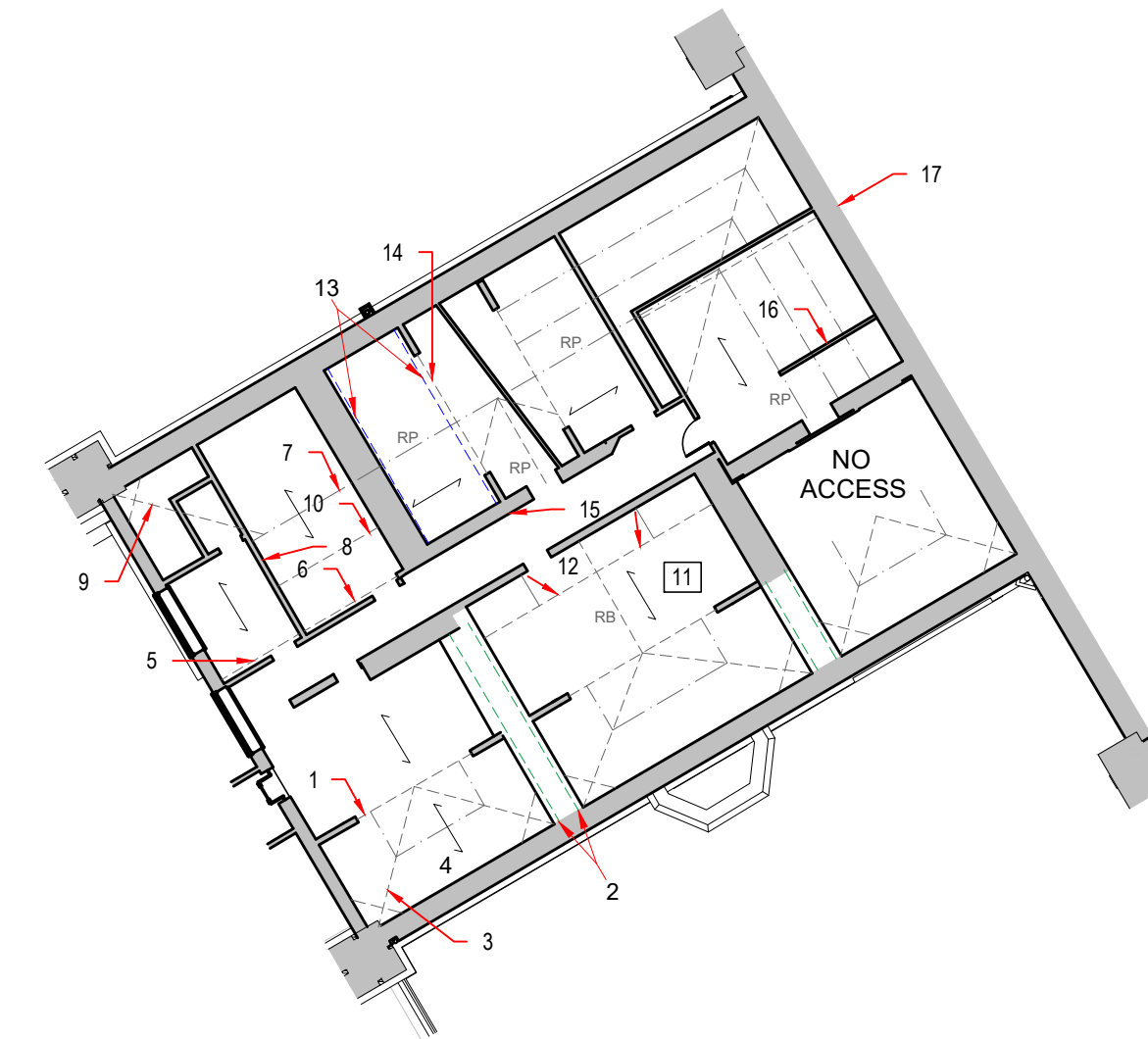
BASEMENT FLOOR PLAN

1:200



WYATT WING ATTIC PLAN

1:200



CENTRAL WING ATTIC PLAN

1:200



ZONES 01-03a: BASEMENT

1. BARREL VAULT CUT OFF AT CROWN TO MAKE WAY FOR STAIRCASE. HOLES IN VAULT FOR SERVICES VERTICALLY SUPPORTED BY BLOCKWORK WALL. REMNANTS OF VAULT HAS BEEN REMOVED. CONCRETE FLOOR ABOVE. ARCHED OPENING HAS BEEN WIDENED. MASONRY CORBELLING EITHER SIDE OVER JAMBS. CONSOLIDATE MASONRY.
2. STEEL BEAMS THROUGH BARREL VAULT SUPPORTING MASONRY AND SERVICES. CORRODING AT EMBEDDED END (CIRCA 20MM DELAMINATION + CIRCA 3MM SECTION LOSS).
3. GEOMETRY OF QUADRIPARTITE VAULTS SOUND. NO STRUCTURAL DEFECT OF NOTE.
4. NO STRUCTURAL DEFECT OF NOTE QUADRIPARTITE VAULTS. SHELVING MADE OF SOLID STONE SLABS ARRANGED VERTICALLY AND SOME ARE UNSTABLE.
5. NO STRUCTURAL DEFECT OF NOTE TO QUADRIPARTITE VAULT.
6. NO STRUCTURAL DEFECT OF NOTE TO QUADRIPARTITE VAULT.
7. NO STRUCTURAL DEFECT OF NOTE TO QUADRIPARTITE VAULT.
8. SHALLOW ARCHED OPENING APPEARS TO HAVE ARTICULATED AND FLATTENED. JAMBS LEAN OUT AT SPRINGER POINT.
9. NO STRUCTURAL DEFECT OF NOTE TO THIS ROOM ALTHOUGH CHECK BELOW FINISHES.
10. SERVICES RUNNING THROUGH VAULT. NO STRUCTURAL DEFECT OF NOTE.
11. HALF OF VAULT REMOVED IN THIS BAR. CROWN DETAIL UNKNOWN.
12. GEOMETRY OF BARREL VAULT FLATTENED SLIGHTLY. SOME BRICK UNITS HAVE SLIPPED. SERVICES HAVE BROKEN THROUGH BARREL VAULT AT THIS LOCATION.
13. NO STRUCTURAL DEFECT OF NOTE TO BARREL VAULT.
14. 2 NO. STEEL BEAMS SUPPORTING WALL ABOVE.
15. BLOCKWORK WALLS.
16. NO STRUCTURAL DEFECT OF NOTE ALTHOUGH SERVICES RUNNING THROUGH WALLS.
17. STEEL BEAMS AND AERATED CONCRETE FLOOR ABOVE. NO STRUCTURAL DEFECT OF NOTE TO MASONRY.

ZONE 01: WYATT WING - ATTIC

1. DIAGONAL TIMBER BRACES SUPPORTING HIPPED ROOF
2. DEEP WALLPLATES
3. KING POST TRUSSES WITH IRON TIE STRAP BETWEEN TIE BEAM AND VERTICAL STRUT
4. TIMBER SECTIONS TYING COMMON RAFTERS AT 3RD POINTS BETWEEN TRUSSES
5. STEEL PLATE BOLTED TO WALLPLATE ALONG THIS SECTION
6. COMMON RAFTERS ON THIS SLOPE HAVE BEEN DOUBLED UP
7. CORBELLED BEARING FOR PURLIN ON BOTH SIDES OF MASONRY PEAK
8. SPLICE REPAIR TO TRUSS BEARING
9. SPLICE REPAIR TO INTERMEDIATE BEAM BEARING
10. SPLICE REPAIR TO TRUSS BEARING
11. STEEL C-SECTION BOLTED TO WALLPLATE.
12. SPLICE REPAIR TO TRUSS BEARINGS BOTH SIDES
13. SPLICE REPAIR TO TRUSS BEARINGS
14. SPLICE REPAIR TO INTERMEDIATE BEAM BEARING
15. WALLHEAD BADLY REBUILT WITH BRICK SIZED CONCRETE BLOCKS
16. DIAGONAL STEEL BRACES BELOW TIMBER BRACES SUPPORTING HIPPED ROOF
17. NO ACCESS

ZONE 02: CENTRAL WING - SECOND FLOOR ATTIC

1. THE BEAM OF TRUSS CUT (SEE SECTION). FLOOR SAGS ABOVE TIE AT FLOOR LEVEL.
2. NO. BRESSUMMER BEAMS TAKE THE LOAD OF THE TRUSS.
3. TRIANGULAR CROSS SECTIONS OF HIPPED RAFTERS ARE NOTCHED TO RECEIVE PURLINS AND ARE DECAYED. BEARS ON A PIECE OF TIMBER, WHICH IS IN TURN SUPPORTED BY A DIAGONAL TIMBER SITTING ON THE WALL ON ONE SIDE AND THE BRESSUMMER BEAM ON THE OTHER.
4. WALL PLATE AND THIS SECTION OF HIPPED ROOF APPEAR NEW / RECENT AND IN GOOD CONDITION.
5. TIMBER BRESSUMMER
6. STEEL BEAM
7. TRUSS CUT AS IN ITEM 1.
8. PARTITION SITTING ON FLOORBOARDS. CIRCA 20MM GAP BETWEEN FLOORBOARDS AND PARTITION ON THIS SIDE. CIRCA 15MM GAP ON WALL AT CEILING INTERFACE. FLOOR SAGS BOTH SIDES.
9. HIPPED RAFTER AS IN ITEM 3.
10. SMALLER TRUSS BEARING ON PARTITION.
11. AS IN ITEMS 1-4. RIDGE BOARD APEX DETAIL.
12. PURLINS CRANKED DOWN TO COMMON RAFTERS. BOXED OUT AS A TRUSS.
13. STEEL BEAMS. RETAIN PARAPET?
14. TRUSS CUT AS IN ITEM 1 BUT HAS NO BEARING.
15. MASONRY WALL.
16. PRINCIPAL RAFTER FROM TRUSS SUPPORTED ON PARTITION. PURLINS SPAN ON TO PRINCIPAL RAFTER WHILE SUPPORTING COMMON RAFTER.
17. PRINCIPAL TRUSS SUPPORTED ON TIMBER PARTITION ON FLOORBOARDS. PRINCIPAL RAFTER BEARING CUT OFF. SUPPORTS HIP JUNCTION (SEE SECTION).

Rev.	Description	Date	By	Chkd



28 Loxher St Kendal, Cumbria, LA9 4DH
01539 724823
kendal@curtins.com
www.curtins.com

Structures • Civils • Environmental • Infrastructure • Transport Planning • Sustainability • Expert Advisory Services
Birmingham • Bristol • Cardiff • Douglas • Dublin • Edinburgh • Glasgow • Kendal • Leeds • Liverpool • London • Manchester • Nottingham

Status: **FOR COORDINATION**

Client: **SHENTON GROUP**

Project: **CUERDEN HALL**

Orig Title: **SURVEY RECORD DRAWINGS, BASEMENT AND ATTIC FLOOR PLANS**

Project No:	Size:	Date:	Drawn By:	Designed By:	Checked By:
077572	A1	01/02/2021	SJ	SJ	DC
Scale:		AS STATED			

Project Code: Originator: Zone: Level: Type: Discipline: Category / Number: Rev: 077572 - CUR - ZZ - ZZ - DR - S - 20004 - 02

I:\Projects\NEW PROJECTS\AWAITING BRIEF\077572_Cuerden Hall\04-Production\A-Model-Drawings\SCAD