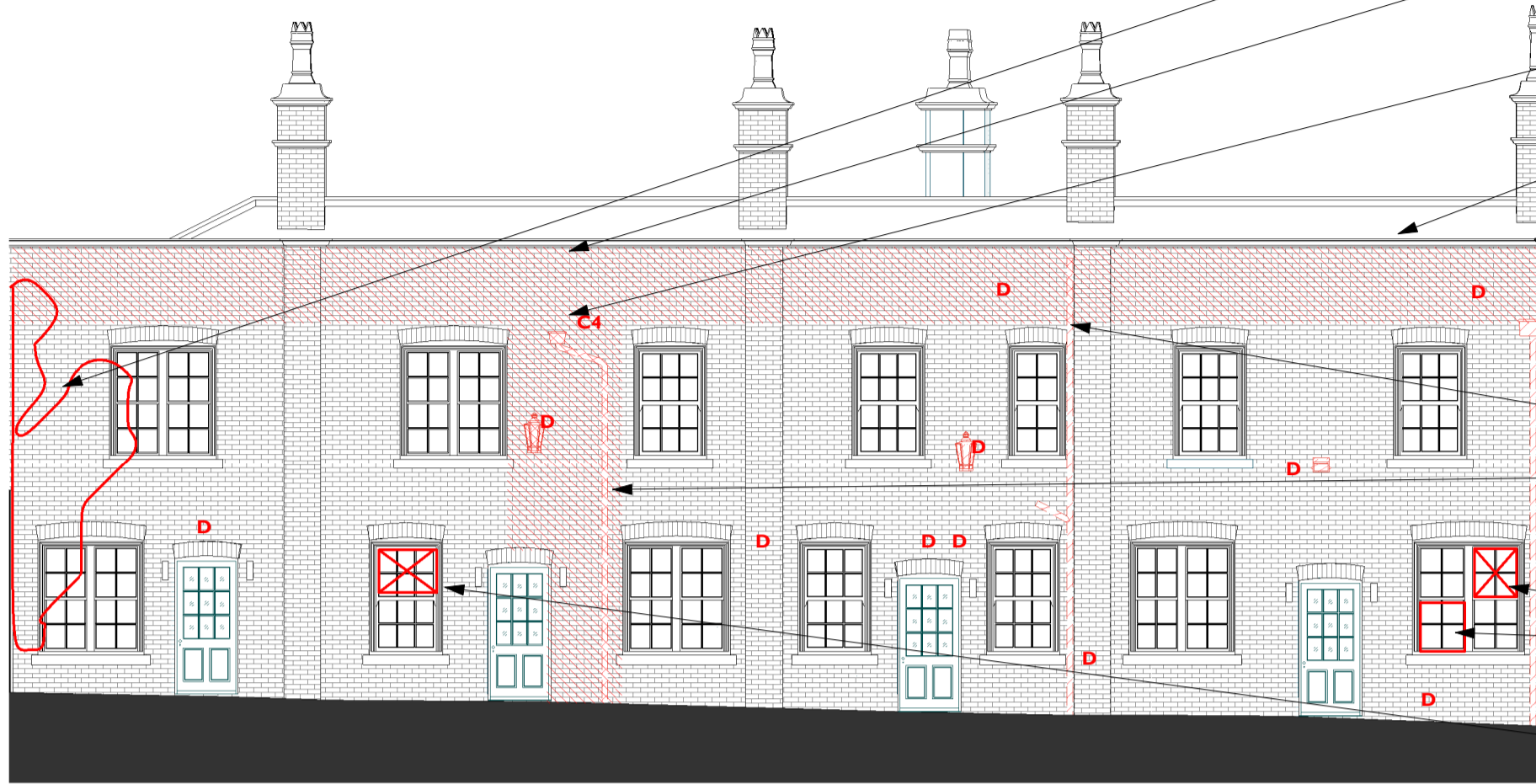
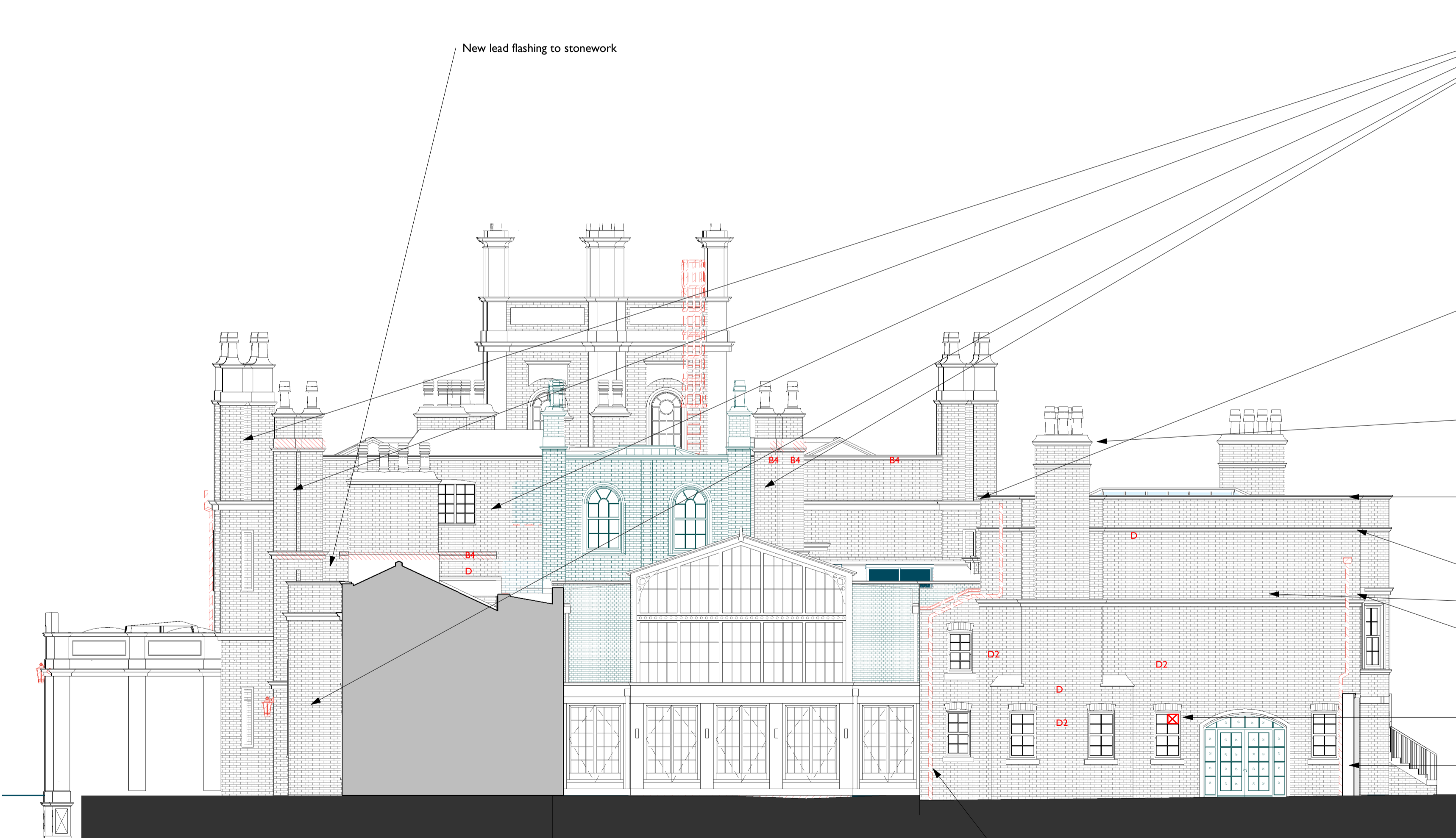


Type A1 - Repointing standard brickwork joints with lime mortar- 100%  
 Type B1 - Indent repair to brickwork. - 10%  
 Type C1 - Doff clean - 100%  
 Type C3 - Clean stonework - Stone coping and stone sills



- Remove ivy from elevation and allow for repairs.
- Allow to carefully dismantle sections of parapet and re-build with matching bricks. Install lead DPC below parapet copings.
- Remove vegetation growth from sump.
- Allow to remove coping stones and iron cramps, re-pin full length of elevation. Point joints. Install
- Allow for 15% replacements to cover breakages and 5 no stone indents.
- Remove modern plastic rwp and hopper and replace with cast iron / aluminium with ears.
- Remove existing RWP and SVP. RWP to be replaced with cast aluminium / iron alternative with ears.
- Re-instate top sash window with matching glazing bars to replace existing louvre. Remove grill to bottom left sash.
- Remove existing fan from top sash. Re-instate sash with glazing bars.

**1 Office Wing Elevation 1 (OE1) Repairs w/Demo**  
 I : 100



- New lead flashing to stonework
- West Elevation 1717 House.  
 Allow to remove coping stones and iron cramps, re-pin full length of elevation. Point joints.  
 Allow for 15% replacements to cover breakages and 5 no stone indents.  
 Repoint stone string course.  
 100 % Type A repointing  
 15% B1 brick replacement  
 100% C1 Doff
- North Parapet  
 Parapet wall leaning outwards. Allow to take down and rebuilt.  
 Repoint stone string course.  
 100 % Type A repointing  
 15% B1 brick replacement
- Allow to renew former cast iron down pipe and hopper with cast iron / aluminium. Circa 800mm height
- Chimney to be taken down to suitable level as noted by S.E and rebuilt. Flashing and new terracotta pots with caps to be installed.
- Allow to remove coping stones and iron cramps, re-pin full length of elevation. Point joints.
- Allow for 15% replacements to cover breakages and 5 no stone indents.
- Repoint open joints to stone string courses.
- Existing SVP to be carefully removed.
- Remove fan from glazed window.
- Garden wall to courtyard.
- Remove vegetation off wall.  
 100% Type A pointing to both sides.  
 30% B1 Brick replacements to both sides.  
 100% C1 Doff Clean.  
 Remove stone copings, re-bed and pin. Allow for 25% new copings to match existing.
- Additional allowance for unknown repairs.

**2 Office Wing Elevation 2 (OE2) Repairs w/Demo**  
 I : 100

**Notes:**  
 Drawings are based on survey data and may not accurately represent what is physically present.  
 Do not scale from this drawing. All dimensions are to be verified on site before proceeding with the work.  
 All dimensions are in millimeters unless noted otherwise.  
 Purcell shall be notified in writing of any discrepancies.

**Key Plan**  
 not to scale  
 Drawings are to be read in conjunction with the Roof repair drawing and the Structural Engineer reports.

**Generally.**  
 All external masonry elevations are to receive DOFF treatment to clean algae and biological growths off masonry.

All copings to be checked. Allowance generally to remove embedded metalwork, rebed and pin copings and point joints. Allowance made for replacement and indents.

All external fixtures and fittings are to be removed from the elevations and made good.

An additional provisional sum of 20% to entire works noted should be allowed above items stated to cover access restrictions.

Type A1 - Repointing standard brickwork joints in lime mortar  
 Type A2 - Repointing fine ashlar joints in lime mortar.

Type B1 - Indent repair to brickwork.  
 Handmade clay brickwork to match historic brickwork in coursing, size, colour and texture.

Type B2 - Indent repair to Stone Ashlar  
 Stonework to match colour, texture, grain and density of historic stonework  
 Type B3 - Indent repair to stone moulding  
 Stonework to match colour, texture, grain, density and profile of existing stonework. Stainless steel pins.

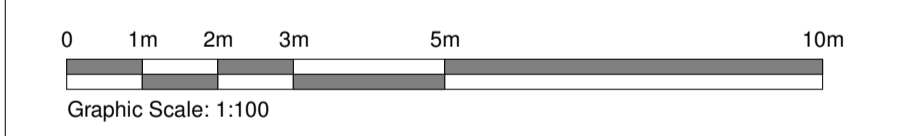
Type B4 - Composite Indent Repair to stone moulding (surround or string course)  
 Composite repair to include for removal of existing embedded ironwork, replacement of stainless steel pins at regular centres. Historic material to undergo analysis for composition.

Type B5 - Defrass stonework and complete mortar repair.  
 Mortar repair to match moulding, colour, texture of adjacent stonework.

Type C1 - Doff clean  
 Type C2 - Remove paint off stonework with a poultice paint remover and Doff clean.  
 Type C3 - Clean stonework  
 Type C4 - Poultice clean to remove surface salts within masonry

Type D - Remove fixture off elevation and make good masonry / stonework behind.  
 Type D2 - Remove fitting from wall and complete stone / brick indent.

Type E - Pin Crack to stonework



P01	21/04/21	For Planning
REV	DATE	DESCRIPTION

**CLIENT**  
 Colin Shenton

**PROJECT**  
 Cuerden Hall, Chorley

**JOB NUMBER**  
 240729

**PURCELL**

**TITLE**  
 Proposed Repair Elevations Sheet 06

SIZE	SCALE	LAST REVISED	DRAWN	CHECKED
A1L	As Shown	07/04/2021	ZB	

**REV**      **SUITABILITY/REASON FOR ISSUE**  
**P01**      **S04 - For Planning**

**DRAWING NUMBER**  
 240729-PUR-00-XX-DR-A-2205