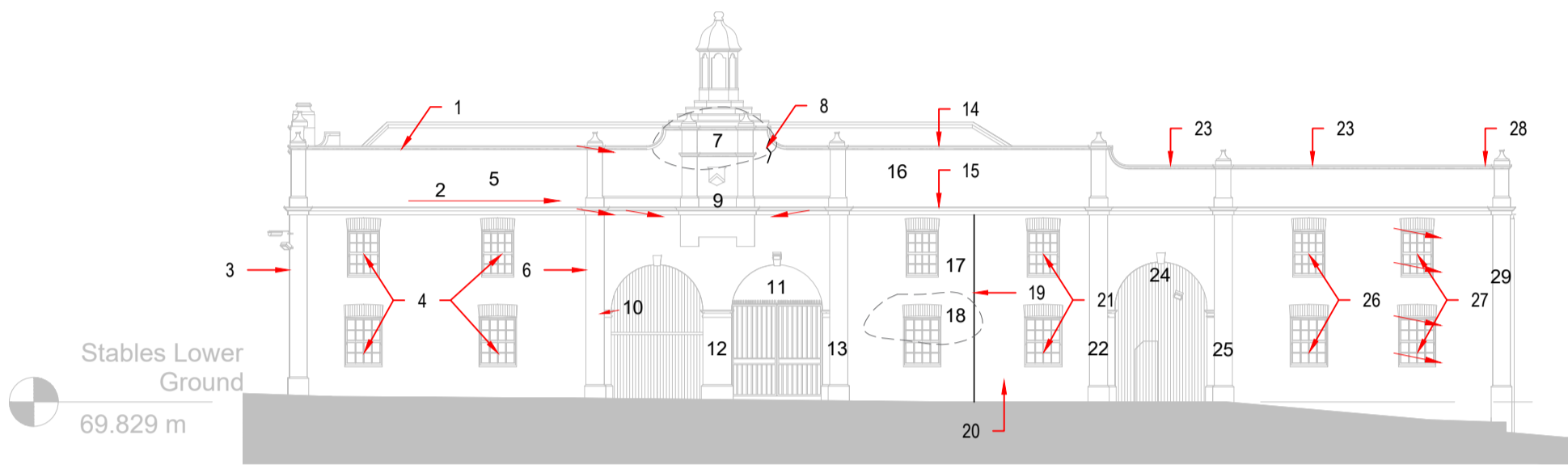
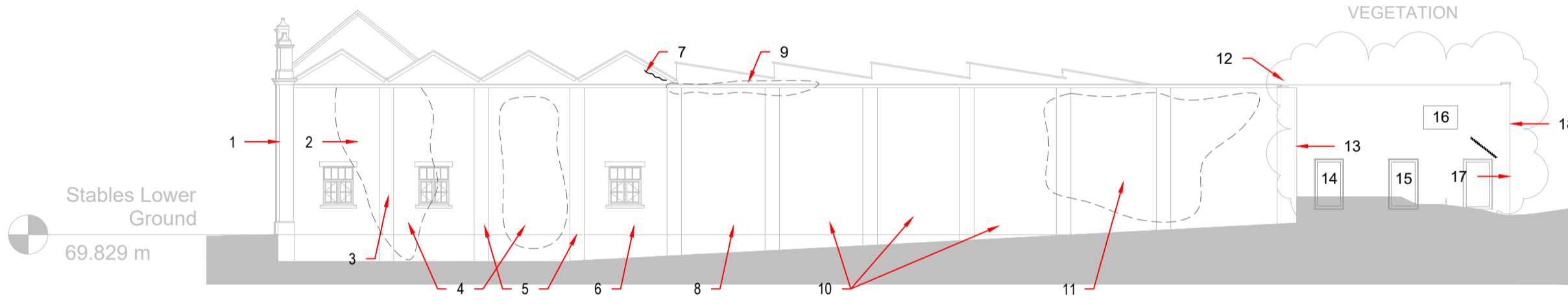


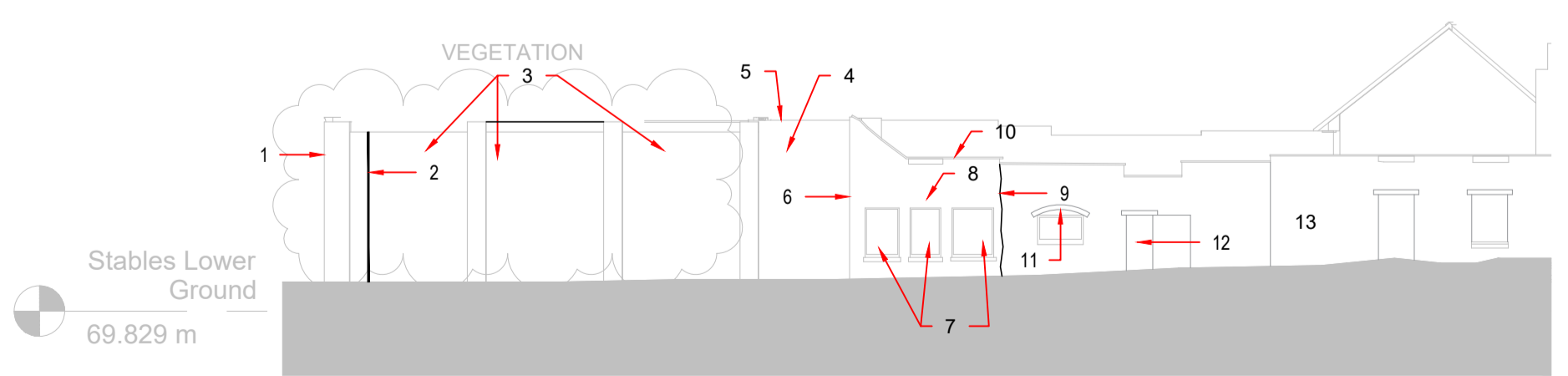
ELEVATION L
1:200



ELEVATION M
1:200



ELEVATION N
1:200



ELEVATION O
1:200

ZONE 04 : ELEVATION L

1. RIDGELINE UNULATES.
2. TOP OF PARAPET AND STRING COURSE TEND DOWN TOWARDS THE COURTYARD INTERFACE FROM SECOND CIRCLE FEATURE CIRCA 30MM.
3. TOP OF PARAPET AND STRING COURSE TEND DOWN TOWARDS DECORATED GABLE FROM SECOND CIRCLE FEATURE CIRCA 30MM OVER LENGTH.
4. OUTWARD BOW ON PLAN OF WALL AT THIS LOCATION. STRING COURSE AND PARAPET FOLLOW OUTWARD BOW.
5. GEOMETRY SOUND TO CIRCULAR FEATURES. BED JOINTS OF INFILL MASONRY TEND TO LEFT, COMPARED WITH SURROUNDING MASONRY.
6. BED JOINT UNULATES SLIGHTLY IN THIS SECTION ALTHOUGH NO STRUCTURAL DEFECT OF NOTE.
7. MASONRY ABOVE CROWN OF CIRCULAR FEATURE SAGGING SLIGHTLY. GEOMETRY OF CIRCULAR FEATURE APPEARS FLATTENED / PUSHED IN ON LOWER RIGHT SIDE. DIAGONAL HARKLINE CRACK WITH OPEN JOINTS TRACKING DOWN FROM THIS LOCATION.
8. MASONRY ABOVE CIRCULAR FEATURE SAGS SLIGHTLY AND OPEN JOINTS AT CROWN. GEOMETRY TO BOTTOM OF CIRCLE APPEARS CUSPED.
9. AN ALTERATION APPEARS TO HAVE TAKEN PLACE AT GROUND LEVEL TO INSTALL TWO SMALL WINDOWS IN A DIFFERENT STYLE TO THE OTHER ELEVATIONS. CEMENT POINTING NOW CRACKED IN PLACES. WELL BONDED TO SURROUNDING MASONRY.
10. ANOTHER ALTERATION FOR A LINTELLED DOORWAY AND A SMALL WINDOW. RELAYED WITH MODERN BRICKS AND CEMENT MORTAR. PARTLY BONDED TO EXISTING EITHER SIDE BUT INEFFECTIVE IN PLACES. REPOINTING OR CONSOLIDATION RECOMMENDED.
11. MASONRY ABOVE FLAT ARCH SAGS AS FLAT ARCH HAS ARTICULATED. OPENING REASONABLY SQUARE BUT BED JOINTS IN INFILL PANEL TEND DOWN TO LEFT, AS DOES INFILLED CILL.
12. UNSUCCESSFUL ATTEMPTS HAVE BEEN MADE FOR FABRIC REPAIR OF INDIVIDUAL BRICKS WHERE THESE HAVE SPALLED DUE TO EMBEDDED METAL WORK. ORIGINAL MASONRY LAYED IN A VARIETY OF ENGLISH GARDEN BOND.
13. RELATIVELY SQUARE. ALTHOUGH SLIGHT HOG IN CILL.
14. ALTERATION ABOVE OPENING IN RETURN. NEW LINTEL AND CEMENT MORTAR ABOVE. SOME BRICKS CORBELLING ABOVE DOWNPIPE.
15. CRACKING AT CORNER RETURNS 10MM WEST SIDE (MASONRY PANEL LOOSE AND HANGING ABOVE LINTEL) AND 30MM EAST SIDE.
16. STRING COURSE ON RETURN LEANS WEST (INTO PAGE).
17. PIER BOWS OUT VERTICALLY BOTH SIDES CIRCA 50MM RETURNING A WALLHEAD. MAXIMUM DISPLACEMENT AT HEIGHT OF OPENING ALTERATIONS.
18. TOP OF PIER LEANS OUT CIRCA 20MM OVER HEIGHT. OPEN JOINT BETWEEN TOP OF PIER AND DECORATIVE WALLHEAD CIRCA 15MM.
19. VERTICAL CRACK UP RETURN OF PIER CIRCA 5-15MM THICK DOWN TO JAMB OF INFILLED OPENING BELOW. FLAT ARCH NOT EFFECTIVE FULL THICKNESS.
20. STRING COURSE TENDS DOWN SLIGHTLY TOWARDS CENTRE. VEGETATION GROWING HIGH LEVEL.
21. TOP OF FINIAL BROKEN OFF.
22. GEOMETRY SOUND. CLOCK REMAINS. NO STRUCTURAL DEFECT OF NOTE.
23. GEOMETRY OF PIERS ETC SQUARE. NO STRUCTURAL DEFECT OF NOTE THIS CENTRAL SECTION.
24. OPEN JOINT IN COPING CIRCA 30MM.
25. FINIAL BROKEN OFF.
26. PIER NOT WELL BONDED. JOINTS OPENING AT INTERFACES.
27. CRACKING ALONG FULL HEIGHT OF PIER RETURN INTERFACE. THICKNESS VARIES BETWEEN HARKLINE AND 20MM.
28. OUTWARD LEAN OF CORNER PIER BOTH DIRECTIONS. MAXIMUM DISPLACEMENT CIRCA 40MM AT STRING COURSE LEVEL.
29. STRING COURSE LEANS DOWN TO CORNER.
30. WHOLE GABLE ELEVATION BOWS OUT IN SECTION. MAXIMUM DISPLACEMENT AT MID POINT OF CENTRAL PIERS CIRCA 50-60MM. DECORATIVE PARAPET HEIGHT ABOVE LEANS IN / BOWS IN ON PLAN CIRCA 20MM OVER ITS HEIGHT.
31. FABRIC REPAIR REQUIRED TO MASONRY AT LOWER LEVEL.

ZONE 04 : ELEVATION M

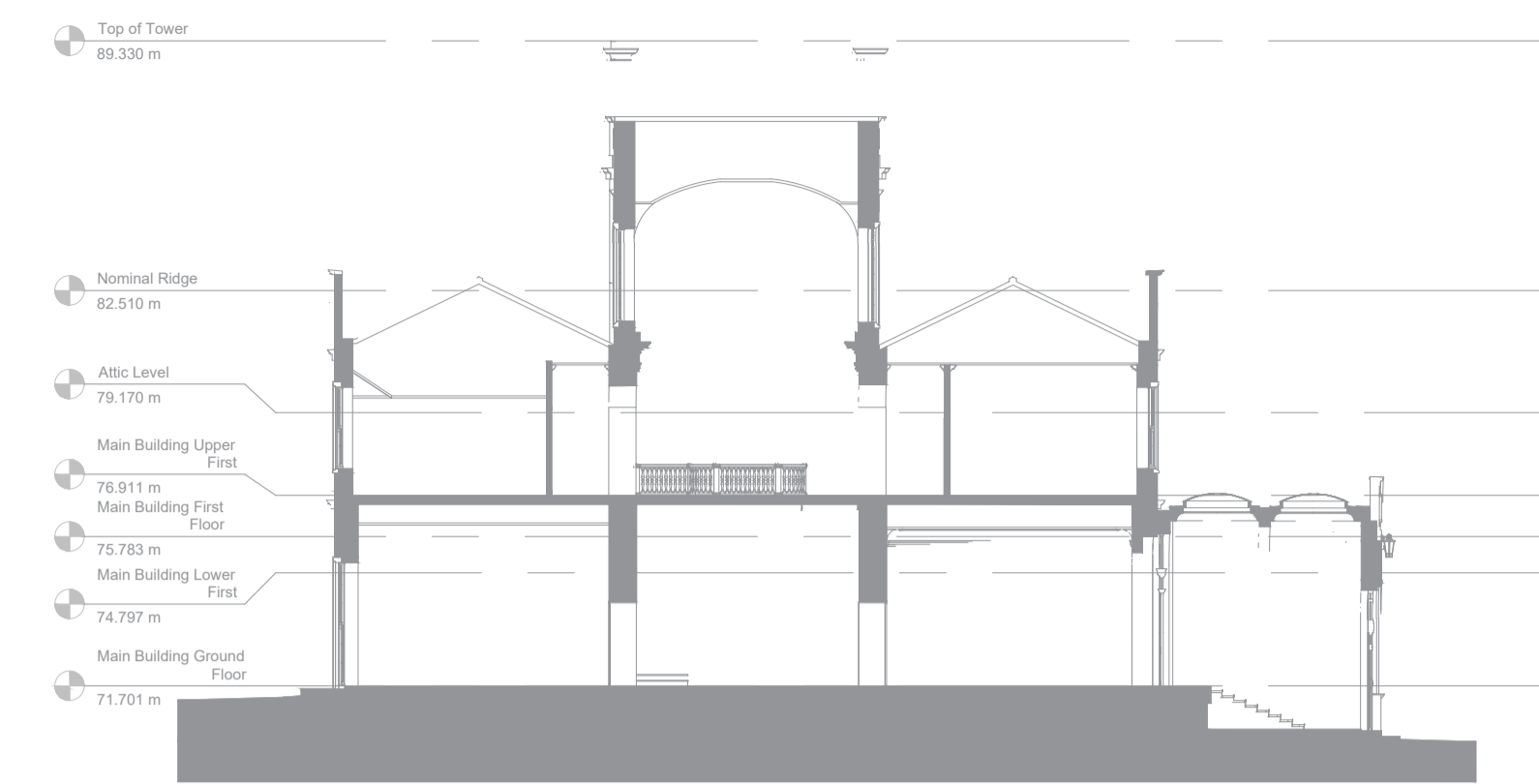
1. TOP OF PARAPET STRAIGHT AND LEVEL. ALTHOUGH OPEN PERPEND JOINTS BETWEEN COPES.
2. STRING COURSE LEANS DOWN TOWARDS CENTRAL PIERS.
3. CORNER PIER LEANS OUT BOTH DIRECTIONS. PARTLY BONDED TO MASONRY FACADE AT RETURN. 5-8MM THICK CRACK UP RETURN.
4. WINDOW OPENINGS SQUARE. FLAT ARCHES AND STONE CILL NO STRUCTURAL DEFECTS OF NOTE.
5. MASONRY SPALLING AT HIGH LEVEL ON PARAPET. LARGE PIECES ON THE GROUND.
6. MASONRY CENTRAL PIER APPEARS PLUMB FACE ON, BUT LEANS OUT SLIGHTLY AS OBSERVED FROM EAST. HARKLINE TO 5MM THICK CRACK UP LEFT RETURN BUT NONE ON RIGHT SIDE. STRING COURSE LEANS / CRANKED AT HIGH LEVEL.
7. MASONRY IN CENTRAL SECTION OF PARAPET HEAVILY WEATHERED. OPEN JOINT BETWEEN COPES AND VEGETATION GROWING.
8. VERTICAL CRACKING FROM COPES UTIL. HALFWAY DOWN PARAPET.
9. STRING COURSE CRANKED DOWN TOWARDS CENTRAL SECTION.
10. ARCH OPENING GEOMETRY SOUND. LEFT SPRINGER ROTATED. NO STRUCTURAL DEFECT OF NOTE TO ARCH.
11. ARCH GEOMETRY SOUND. ALTHOUGH SKIN SEPARATION WITH INNER ARCH CIRCA 15-20MM AT CROWN. 3 NO. MASONRY UNITS IN ARCH DECAYED / SPALLING.
12. NO STRUCTURAL DEFECTS OF NOTE TO PIER.
13. PIER APPEARS PLUMB BOTH DIRECTIONS. BOTH RETURNS TIGHT.
14. TOP OF PARAPET UNULATES. COPES DISPLACED, OPEN PERPEND JOINTS, TENDING GRADUALLY DOWN TO WEST.
15. STRING COURSE TENDS DOWN TO WEST AND VEGETATION GROWING.
16. PARAPET MASONRY DECAYED AND SPALLING. FABRIC REPAIR REQUIRED.
17. WINDOW OPENING SQUARE. BRICK UNITS IN FLAT ARCH DECAYED.
18. MASONRY HEAVILY DECAYED IN THIS SECTION. OPEN JOINTS BETWEEN BRICK VOISSORS IN FLAT ARCH. FABRIC REPAIR REQUIRED. WINDOW OPENING SQUARE.
19. BUTT JOINT NOT PLUMB AND OPEN CIRCA 10MM GAP.
20. MASONRY IN THIS SECTION ENGLISH GARDEN BOND (HEADER AND 4 STRETCH).
21. WINDOW OPENINGS SQUARE.
22. MASONRY PIER APPEARS PLUMB BOTH DIRECTIONS. RETURNS TIGHT BOTH SIDES.
23. OPEN JOINT BETWEEN COPES ON TOP OF PARAPET, TENDING DOWN TO WEST CORNER.
24. PART OF ARCH OBSCURED BY VEGETATION. GEOMETRY OF VISIBLE SECTION NO STRUCTURAL DEFECT OF NOTE.
25. PIER OBSCURED BY VEGETATION.
26. RELATIVE SQUARE ALTHOUGH OBJECTIVE APPRAISAL OF GEOMETRY PRECLUDED BY VEGETATION AND HOARDING.
27. WINDOW OPENINGS CRANKED DOWN TO WEST CORNER.
28. 30MM GAP BETWEEN COPES.
29. PIER BOWING OUT BOTH DIRECTIONS. RETURNS TIGHT EITHER SIDE.

ZONE 04 : ELEVATION N

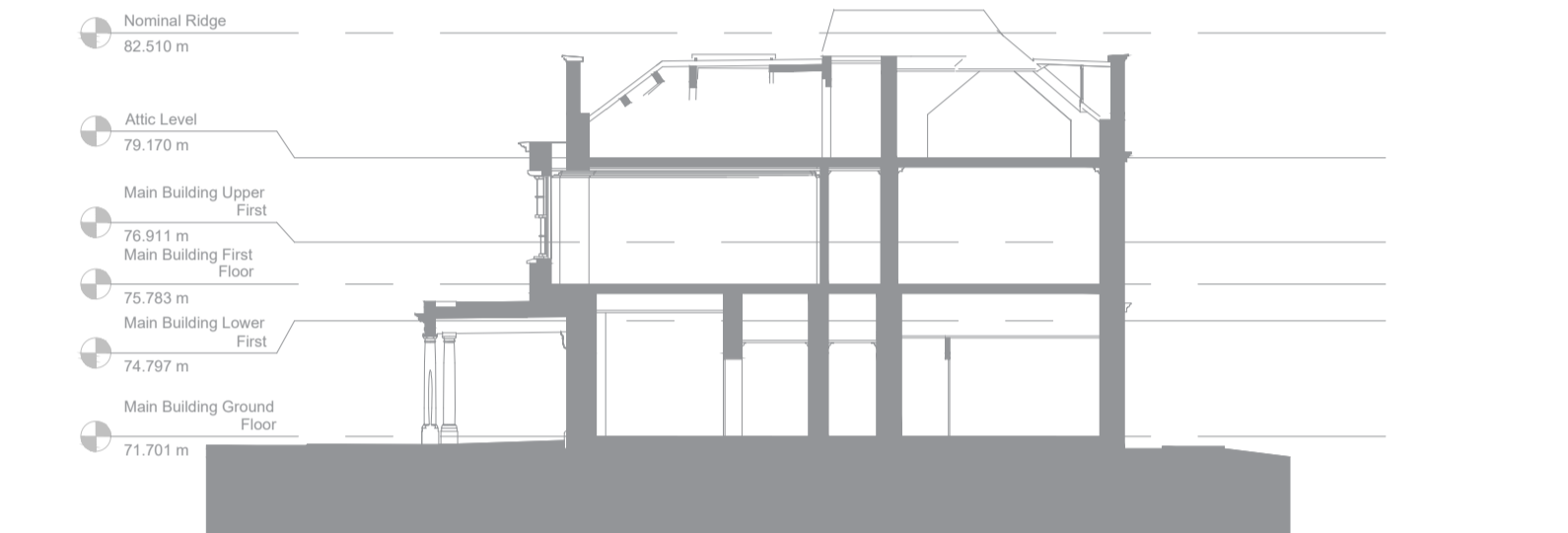
1. PIER LEANS IN SLIGHTLY OVER ITS HEIGHT, STRAIGHTENING UP AT WALL HEAD.
2. MASONRY SATURATED AND LACK OF MORTAR IN JOINTS. RAINWATER FROM CHANNEL BETWEEN ROOFS APPEARS TO DISCHARGE DIRECTLY ONTO MASONRY.
3. MASONRY PIER WELL BONDED TO GABLE WALLS.
4. VEGETATION COVERS THIS SECTION OF WALL.
5. MASONRY PIERS ARE PLUMB AND WELL BONDED. NO STRUCTURAL DEFECTS OF NOTE.
6. NO STRUCTURAL DEFECT OF NOTE TO THIS GABLE. WINDOW OPENING SQUARE. INDIVIDUAL BRICKS ARE DECAYED.
7. DIAGONAL CRACK ALONG EDGE OF GABLE WALL HEAD. APPEARS ADJACENT EAVES ARE JACKED UP.
8. MASONRY IN THIS SECTION SATURATED AND MOSS GROWTH.
9. GRASS GROWING AT EAVES LINE.
10. NO STRUCTURAL DEFECT OF NOTE TO THESE SECTIONS.
11. THIS SECTION HIDDEN BY VEGETATION. LACK OF MORTAR IN JOINTS.
12. MATURE VEGETATION JACKING OUT TOP 1M OF MASONRY PIER CIRCA 30-50MM. LARGE LOOSE BLOCKS OF MASONRY AT HIGH LEVEL UNSTABLE. TAKE DOWN AND REBUILD WELL BONDED.
13. VERTICALITY OF WALL ELEVATION APPEARS PLUMB.
14. BRICKED UP OPENING. FLAT ARCH ABOVE.
15. BRICKED UP WINDOW OPENING.
16. WINDOW OPENING IN MASONRY. FLAT ARCH ABOVE WITH SPLIT KEYSTONE SLIDING DOWN. DECAYED TIMBER SAFE LINTEL BEHIND. SILL JACKED OUT BY VEGETATION.
17. DIAGONAL HARKLINE CRACK ABOVE DOOR OPENING. SAG IN MASONRY ABOVE FLAT ARCH. TIMBER SAFE LINTEL BEHIND. TOP RIGHT CORNER OF OPENING LEANS OUT.
18. CORNER LEANS OUT OVER ITS HEIGHT.

ZONE 04 : ELEVATION O

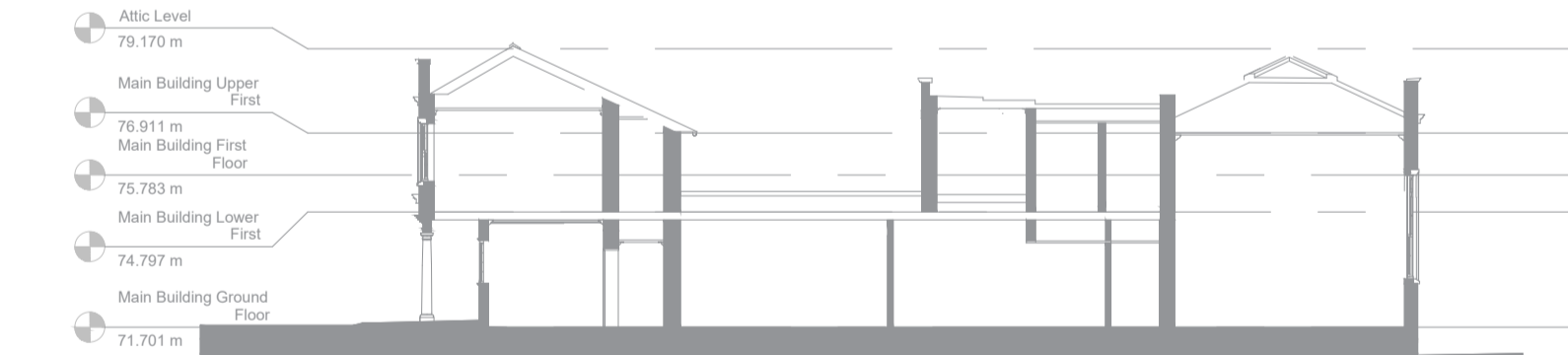
1. TOP 1M OF PIER LEANS OUT, AS PER ELEVATION N.
2. MASONRY BEHIND RAINWATER PIPE SATURATED AND MORTAR DECAYED IN JOINTS.
3. NO STRUCTURAL DEFECT OF NOTE, ALTHOUGH LOOSE MASONRY AT WALL HEAD.
4. 7 NO MATURE TREES IN CLOSE PROXIMITY TO WALL IN THIS SECTION. THESE MAKE IT DIFFICULT TO APPRAISE VERTICALITY. BUT WALL APPEARS TO BE LEANING OUT OVER ITS HEIGHT.
5. DISPLACED COPES IN THIS SECTION.
6. CORNER PLUMB LOOKING NORTH.
7. GEOMETRY OF BRICKED UP WINDOW OPENINGS APPEAR SQUARE. MASONRY WALL BULGES OUT OF PAGE CIRCA 40MM AT THIS LOCATION WITH MAXIMUM DISPLACEMENT ABOVE WINDOWS AND LEANING IN AT WALL HEAD. SKIN SEPARATION, PARTICULARLY OF PIER BETWEEN WINDOWS. CRACKS THROUGH RIGHT FLAT ARCH - FALLING.
8. OPEN JOINT AT BUTT JOINT.
9. COPES DISPLACED AT WALL HEAD.
10. ELLIPTICAL ARCH GEOMETRY SOUND. BLOCKED UP OPENING BELOW. TIMBER LINTEL DECAYED AND FAILING.
11. BLOCKED UP OPENING WITH STONE LINTEL BEARING ON HEAVILY DECAYED TIMBER. BED JOINTS IN MASONRY ABOVE SAGGING.
12. WALL LEANS OUT OVER ITS HEIGHT BY CIRCA 60MM. MAX DISPLACEMENT AT WALL HEAD.



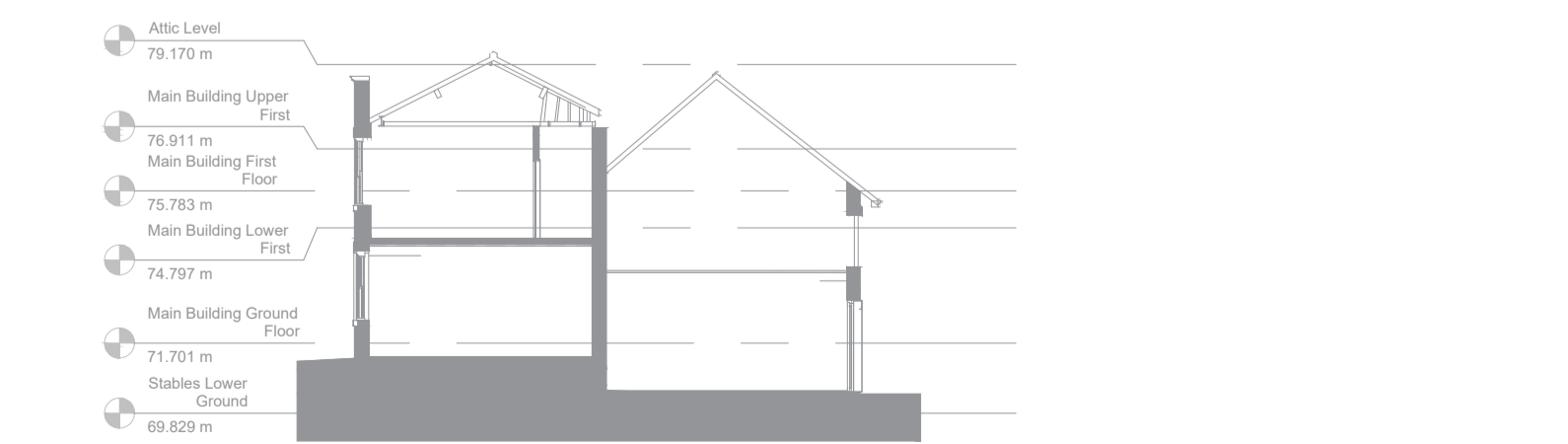
SECTION A-A
1:200



SECTION B-B
1:200



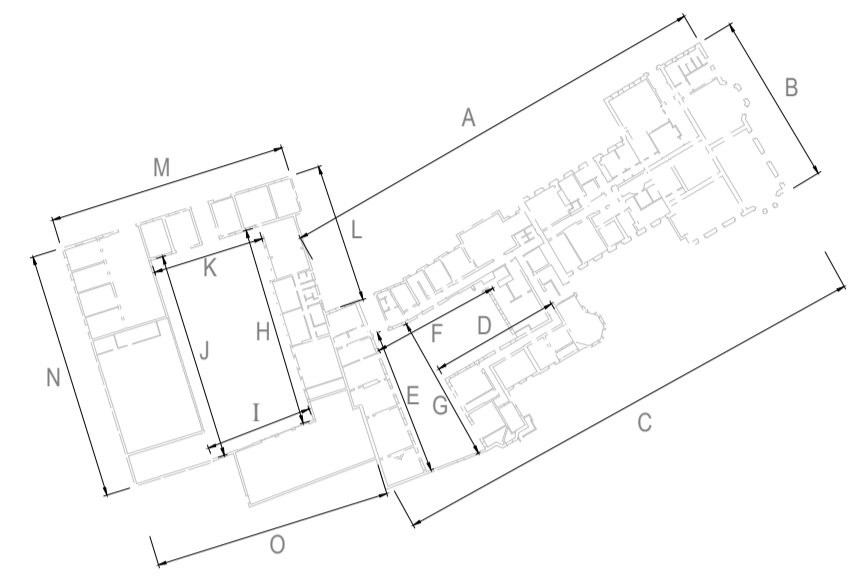
SECTION C-C
1:200



SECTION D-D
1:200

GENERAL NOTES:

1. THIS DRAWING IS TO BE READ IN CONJUNCTION WITH ALL RELEVANT ARCHITECTS AND ENGINEERS DRAWINGS AND SPECIFICATIONS.
2. DO NOT SCALE THIS DRAWING. ANY AMBIGUITIES, OMISSIONS AND ERRORS ON DRAWINGS SHALL BE BROUGHT TO THE ENGINEERS ATTENTION IMMEDIATELY. ALL DIMENSIONS MUST BE CHECKED / VERIFIED ON SITE.
3. ALL DIMENSIONS ARE IN MILLIMETRES UNLESS NOTED OTHERWISE.
4. FOR GENERAL NOTES REFER TO DRAWING.



Rev.	Description	Date	By	Chkd



28 Lower St Kendal, Cumbria, LA9 4DH
01539 724823
kendal@curtins.com
www.curtins.com

Structures • Civils • Environmental • Infrastructure • Transport Planning • Sustainability • Expert Advisory Services
Birmingham • Bristol • Cardiff • Douglas • Dublin • Edinburgh • Glasgow • Kendal • Leeds • Liverpool • London • Manchester • Nottingham

Status:

FOR COORDINATION

Client:

SHENTON GROUP

Project:

CUERDEN HALL

Dwg Title:

**SURVEY RECORD DRAWINGS,
STABLEYARD EXTERNAL ELEVATIONS**

Project No.	Size	Date	Drawn By	Designed By	Checked By
077572	A1	01/02/2021	SJ	SJ	DC

Scale: 1:200

Project Code	Originator	Zone	Level	Type	Discipline	Category	Number	Rev
077572 - CUR - ZZ								

077572 - CUR - ZZ - ZZ - DR - S - 21003 - 02

I:\Projects\2021\077572_Cuerden Hall\04-Production\A-Moore-Drawings\CAD