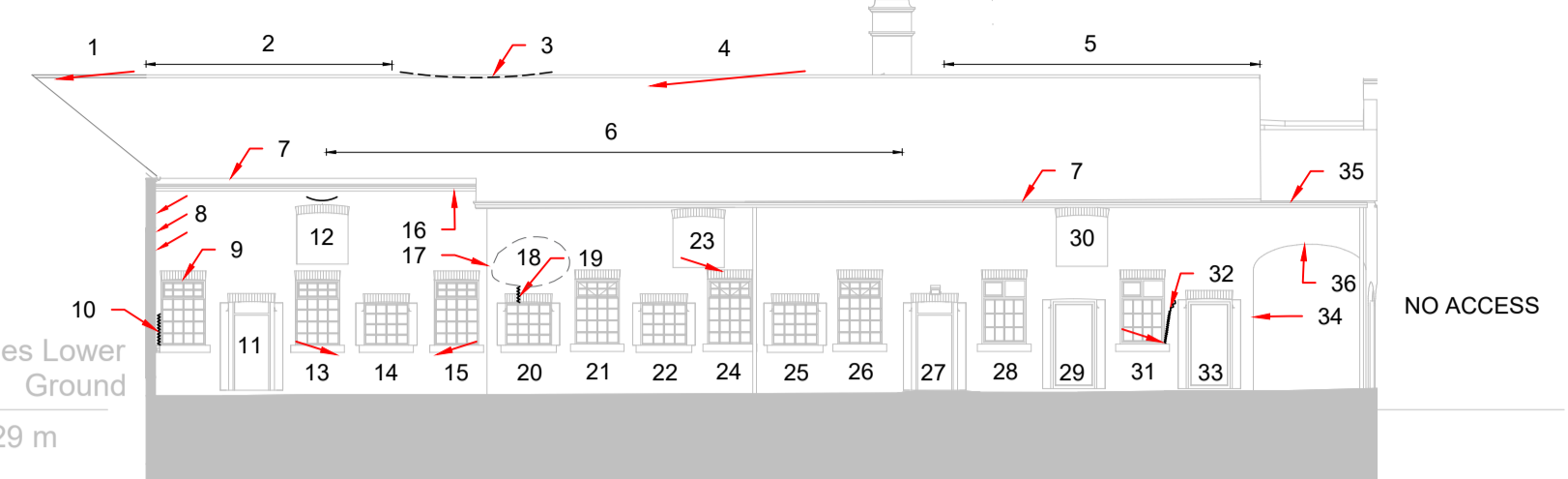


ELEVATION D
1:200

- ZONE 03 : ELEVATION D**
- RIDGELINE STRAIGHT AND LEVEL.
 - ROOF STRAIGHT.
 - EAVES LINE STRAIGHT AND LEVEL.
 - WINDOW OPENING RELATIVELY SQUARE.
 - GROUND FLOOR WINDOW CRANKED DOWN TOWARDS CORNER.
 - DOOR OPENING RELATIVELY SQUARE.
 - JUMP IN WALL ALIGNMENT APPEARS TIGHT.
 - ALL WINDOW OPENINGS SQUARE ON THIS SECTION. NO STRUCTURAL DEFECT OF NOTE.
 - CORNER VERTICALITY PLUMB.
 - WALL HEAD LEANS IN ON PLAN ABOVE STRING COURSE. OPEN PERPEND JOINTS BETWEEN COPIES.
 - JAMBS OF WINDOW OPENING LEANING IN.
 - GAP BETWEEN COPIES CIRCA 20-30MM.
 - TOP OF CORNER LEANS OUT ABOVE STRING COURSE. OPEN JOINTS / LACK OF MORTAR ALONG HAIRLINE CRACK.
 - TOP OF CHIMNEY HEAVILY WEATHERED. FABRIC REPAIR REQUIRED.



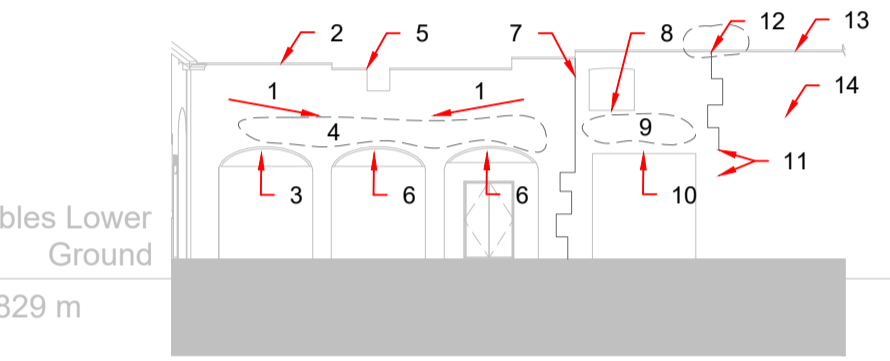
ELEVATION H
1:200

- ZONE 04 : ELEVATION H**
- RIDGELINE TENDS DOWN TO HIP VALLEY.
 - RIDGELINE STRAIGHT AND LEVEL.
 - SAG IN RIDGELINE.
 - RIDGELINE TENDS DOWN.
 - HOG IN RIDGELINE THEN UNDLATES ALONG REST OF LENGTH.
 - SLOPE UNDLATES ACCORDING TO RIDGELINE.
 - EAVES LINE STRAIGHT AND LEVEL.
 - CIRCA 5MM CRACK UP RETURN ON WINDOW.
 - SQUARE.
 - BED JOINTS SAG ABOVE SHALLOW ARCH OVER OPENING.
 - RELATIVELY SQUARE. PERHAPS VERY SLIGHT CRANK DOWN TO RIGHT.
 - OPENING APPEARS TO HAVE BEEN ALTERED FROM A DOORWAY TO A WINDOW. REINSTATEMENT OF SPANDREL WITH NEWER BRICKS (DIFFERENT SIZE) PARTLY BONDED TO EXISTING. SPLIT CILL AT MIDPOINT.
 - RELATIVELY SQUARE. PERHAPS VERY SLIGHT CRANK DOWN TO LEFT.
 - GUTTER SUPPORTED BY TIMBER CANTILEVERS ALONG WHOLE ELEVATION.
 - CORNER BOWS OUT IN BOTH DIRECTIONS. RETURNING AT WALLHEAD.
 - OUT OF PAGE BOW OF WALL IN THIS AREA CIRCA 20-25MM.
 - CIRCA 2MM THICK CRACK FROM VENT DOWN TO UNDERSIDE OF FLAT ARCH.
 - OPENING APPEARS TO HAVE BEEN ALTERED FROM A DOORWAY TO A WINDOW. REINSTATEMENT OF SPANDREL WITH NEWER BRICKS (DIFFERENT SIZE) PARTLY BONDED TO EXISTING. SPLIT CILL AT MIDPOINT.
 - SQUARE.
 - OPENING APPEARS TO HAVE BEEN ALTERED FROM A DOORWAY TO A WINDOW. REINSTATEMENT OF SPANDREL WITH NEWER BRICKS (DIFFERENT SIZE) PARTLY BONDED TO EXISTING. SPLIT CILL AT MIDPOINT.
 - SQUARE. RED JOINT UNDLATING. MASONRY FABRIC DECAYED IN SPANDREL.
 - CRANKED DOWN SLIGHTLY TOWARDS FLAT ARCH.
 - SQUARE. RED JOINT UNDLATING. MASONRY FABRIC DECAYED IN SPANDREL.
 - OPENING APPEARS TO HAVE BEEN ALTERED FROM A DOORWAY TO A WINDOW. REINSTATEMENT OF SPANDREL WITH NEWER BRICKS (DIFFERENT SIZE) PARTLY BONDED TO EXISTING. SPLIT CILL AT MIDPOINT. DPM UNDER NEW BRICKS AT GROUND LEVEL WITH NO RETURN.
 - SQUARE.
 - OPENING APPEARS TO HAVE BEEN ALTERED FROM A DOORWAY TO A WINDOW. REINSTATEMENT OF SPANDREL WITH NEWER BRICKS (DIFFERENT SIZE) PARTLY BONDED TO EXISTING. SPLIT CILL AT MIDPOINT.
 - MASONRY DECAY ON JAMBS AT LOWER LEVEL. OPENING SQUARE.
 - SQUARE.
 - SQUARE.
 - SQUARE.
 - SILL CRANKED DOWN TO RIGHT. SPLIT CILL AT MIDPOINT.
 - EMBEDDED METAL WITH 2MM CRACK ALONG JOINTS REDUCING TO HAIRLINE AT CILL (LEFT AND FLAT ARCH (RIGHT)).
 - ARCH GEOMETRY OK BUT SKIN SEPARATION APPARENT. CIRCA 20MM BOTH IN ARCH AND IN MASONRY ABOVE.
 - JAMBS BOWING INWARDS SLIGHTLY BOTH SIDES OF OPENING AND BED JOINTS ABOVE FLAT ARCH SAG. ARCH APPEARS TO HAVE ARTICULATED BUT NO OPEN JOINTS.
 - CORNER RELATIVELY PLUMB BOTH DIRECTIONS.
 - LOOSE MASONRY AND OPEN WALLHEADS.
 - MASONRY FABRIC HEAVILY DECAYED IN ARCH AND IN MASONRY ABOVE. GEOMETRY SHALLOW ARCH BUT OK.



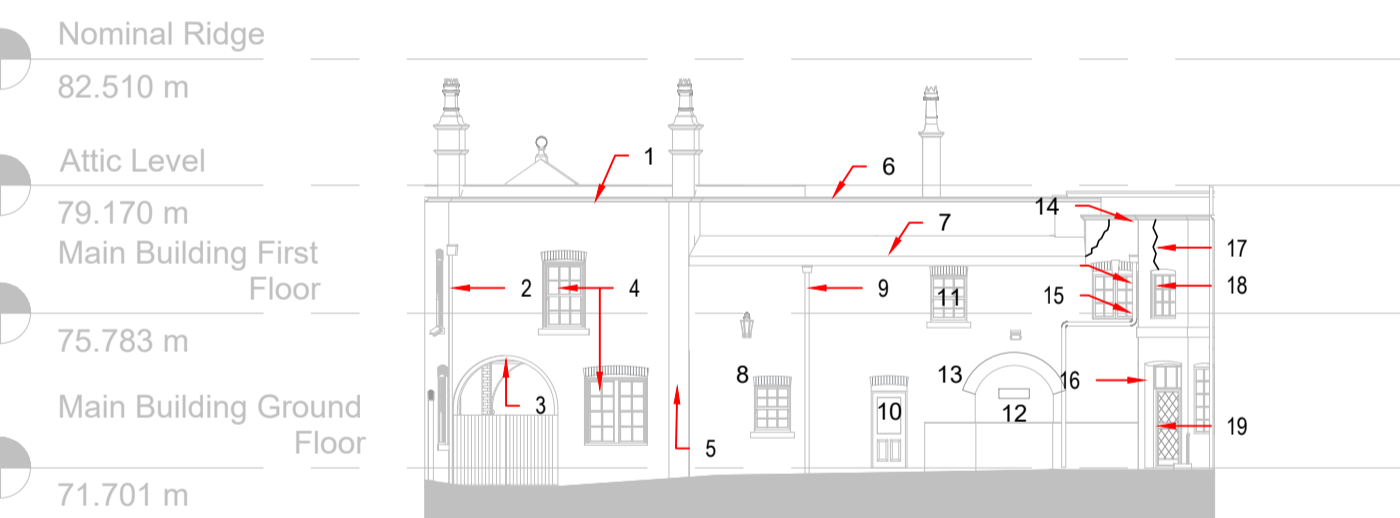
ELEVATION E
1:200

- ZONE 03 : ELEVATION E**
- CORNER LEANING OUT (LEFT) UP ITS HEIGHT, ALTHOUGH DIFFICULT TO APPRAISE BY HOW MUCH DUE TO VEGETATION. ALSO LEANS INTO PAGE FROM FIRST FLOOR TO TOP OF PARAPET CIRCA 100MM.
 - REMAINDER OF WALL LEANS IN FROM FIRST FLOOR AND LEANS IN FURTHER AT PARAPET LEVEL CIRCA 100-150MM OVER ITS HEIGHT.
 - RELATIVELY SQUARE ARCHED OPENINGS. GEOMETRICALLY SOUND.
 - PIER PLUMB UNTIL PARAPET LEVEL, WHERE IT LEANS IN COMMENSURATE WITH PARAPET.
 - WALLHEAD OF PARAPET LOCALLY LEANS OUT AND 2 NO 10MM THICK CRACKS ARE PRESENT UNDER OPEN PERPEND JOINTS (CIRCA 20-30MM). CHECK FOR SKIN SEPARATION.
 - WALLHEAD STRAIGHT AND LEVEL ALTHOUGH PARAPET LEANS IN BY CIRCA 50MM CONSISTENTLY ALONG LENGTH.
 - SQUARE ON THIS BAY.
 - PIER PLUMB UNTIL PARAPET LEVEL, WHERE IT LEANS IN COMMENSURATE WITH PARAPET.
 - WALLHEAD STRAIGHT AND LEVEL ALTHOUGH PARAPET LEANS IN BY CIRCA 50MM CONSISTENTLY ALONG LENGTH BUT WITH OPEN PERPEND JOINTS BETWEEN COPIES.
 - SQUARE.
 - CRANKED DOWN SLIGHTLY TOWARDS PIER.
 - PIER PLUMB UNTIL PARAPET LEVEL WHERE IT LEANS IN COMMENSURATE WITH PARAPET.
 - WALLHEAD STRAIGHT AND LEVEL ALTHOUGH PARAPET LEANS IN BY CIRCA 50MM CONSISTENTLY ALONG LENGTH BUT WITH OPEN PERPEND JOINTS BETWEEN COPIES.
 - SQUARE.
 - CRANKED DOWN ABOVE DRAIN LOCATION.
 - CORNER JOINT TIGHT.
 - DOWN PIPE FROM GUTTER BEHIND PARAPET.



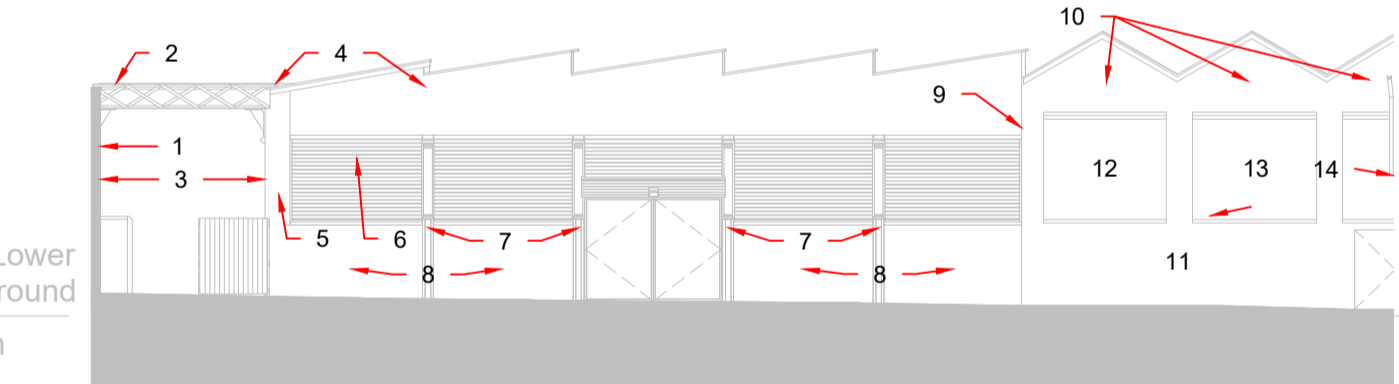
ELEVATION I
1:200

- ZONE 04 : ELEVATION I**
- BEDJOINTS AND WALLHEAD TEND DOWN TOWARDS CENTRE ARCH CROWN.
 - WALLHEAD CAPPED WITH NO MAJOR GAPS BETWEEN CAPPING STONES. MASONRY FABRIC STILL DECAYED AT WALLHEAD.
 - ARCH GEOMETRY OK BUT SKIN SEPARATION APPARENT. CIRCA 20MM BOTH IN ARCH AND IN MASONRY ABOVE.
 - PIER LEANS OUT CIRCA 30MM UNTIL SPRINGER BLOCK THEN WALL ABOVE LEANS IN CIRCA 50-55MM UNTIL WEAHEAD. WORST ABOVE SPRINGER LOCATION BETWEEN LEFT AND CENTRAL ARCH BUT OCCURS ABOVE ALL ARCHES. WALL IS FREESTANDING ALONG THIS SECTION.
 - MASONRY FABRIC DECAYED / SOME MISSING UNITS AROUND THIS OPENING.
 - ARCH GEOMETRY OK BUT SKIN SEPARATION CIRCA 20MM AND BEDJOINTS SAG ABOVE CROWN.
 - PARTLY / POORLY BONDED BUTT JOINT, BUT TIGHT CROSSWALL BEHIND.
 - LOOSE MASONRY ON CILL OF OPENING BUT GEOMETRY SQUARE.
 - BEDJOINTS IN THIS AREA UNDLATE.
 - STEEL LINTELS CORRODING / SLIGHT SAG OVER SPAN.
 - JOINT WELL BONDED AT LOWER LEVEL. PARTLY BONDED HIGHER LEVEL.
 - MATURE VEGETATION JACKING UP WALLHEAD CIRCA 20-30MM.
 - MATURE TREE DIRECTLY BEHIND WALL, LIKELY PROPPING.
 - WALL LEANS OUT (INTO PAGE) ALONG ITS HEIGHT CIRCA 80-100MM. RETAINED AT RIGHT END BY TRUSS.



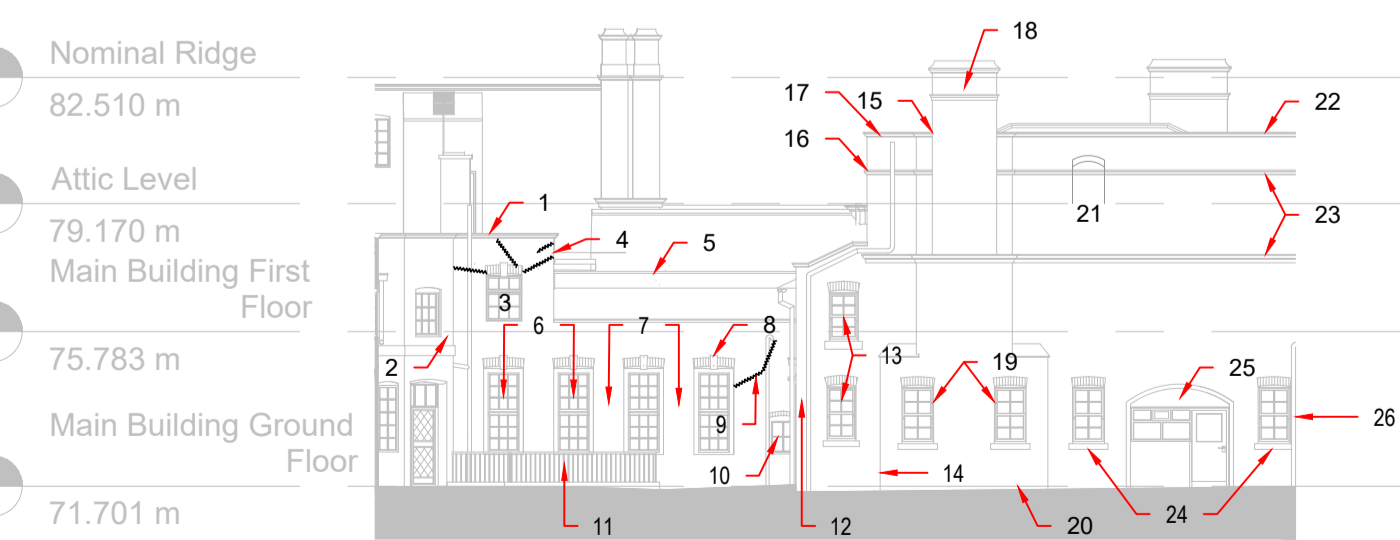
ELEVATION F
1:200

- ZONE 03 : ELEVATION F**
- TOP OF PARAPET STRAIGHT AND LEVEL. OPEN PERPEND JOINTS BETWEEN COPIES, WHICH ARE DISPLACED AT WALL HEAD, BOWING OUT AT MID POINT.
 - CORNER BOND TIGHT.
 - ARCH GEOMETRY SOUND. INTRADOS OF INNER ARCH DAMAGED BELOW QUARTER POINTS.
 - WINDOW OPENING SQUARE.
 - PIER PLUMB. NO STRUCTURAL DEFECT OF NOTE.
 - TOP OF PARAPET STRAIGHT AND LEVEL. OPEN PERPEND JOINTS BETWEEN COPIES.
 - SLOPE UNDLATES SLIGHTLY, PARTICULARLY ON LEFT SIDE.
 - NO STRUCTURAL DEFECT OF NOTE TO MASONRY THIS SECTION. WINDOW OPENING SQUARE.
 - MASONRY FABRIC DAMP BEHIND DOWN PIPE. DEEP PACK POINTING REQUIRED.
 - DOOR OPENING SQUARE.
 - WINDOW OPENING SQUARE.
 - ARCHED OPENING IS BRICK THICK ARCH ON OUTER SKIN. FLAT ARCH INSIDE INFILL BRICK PANEL. ALL WELL BONDED. ARCH GEOMETRY SOUND.
 - NO STRUCTURAL DEFECT OF NOTE TO MASONRY WALL ALONG THIS SECTION.
 - TOP OF PARAPET LEANS DOWN TOWARDS CORNER. DIAGONAL CRACK FROM CORNER OF EAVES CIRCA 10-15MM REDUCING TO HAIRLINE BELOW COPIES. WALL HEAD BULGES OUT SLIGHTLY ON PLAN.
 - WINDOW OPENING CRANKED DOWN TO CORNER. ARCH GEOMETRY SOUND.
 - MASONRY IN CORNER SATURATED BELOW RAINWATER PIPE.
 - VERTICAL CRACKING DOWN FROM DISPLACED COPIES AT WALL HEAD TO TOP OF FLAT ARCH ABOVE WINDOW OPENING. CIRCA 5-10MM THICK AT WALL HEAD REDUCING TO HAIRLINE.
 - WINDOW OPENING SQUARE.
 - DOOR OPENING SQUARE.



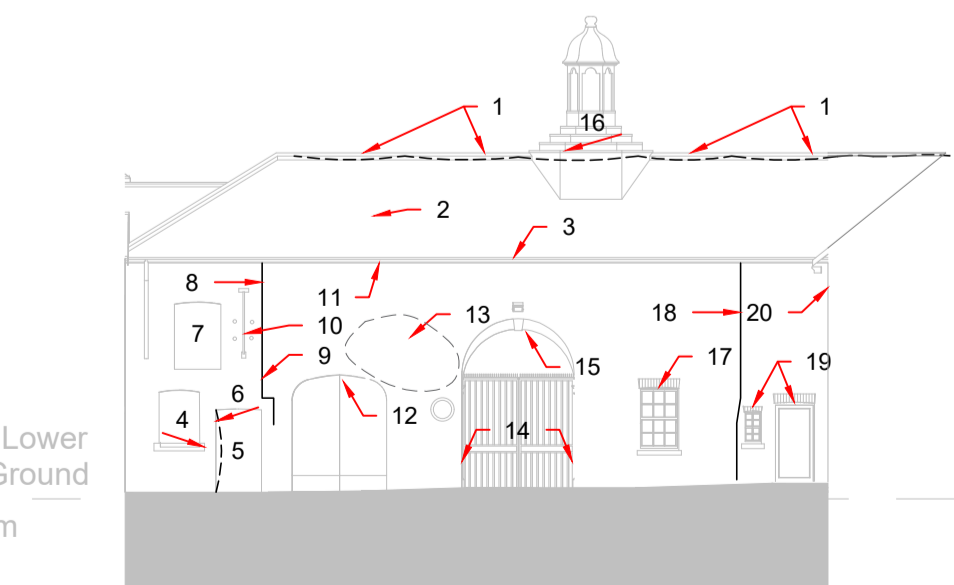
ELEVATION J
1:200

- ZONE 04 : ELEVATION J**
- EXTERNAL WALL LEANING OUT OVER HEIGHT, CIRCA 80MM AT WALLHEAD.
 - IRON TRUSS ACROSS OPENING CRANKED DOWN TO SOUTH. SEVERELY CORRODED - DELAMINATION 2-15MM THROUGHOUT. SOME PARTS CORRODED THROUGH. EMBEDDED STEEL IN MASONRY. JACKING UNITS OUT. TRUSS APPEARS TO HAVE RETAINED (LEFT) WALL LEANING OUT. ELABORATELY DECORATED BRACKET COMING OFF SUPPORTS.
 - MASONRY WALLS INSIDE APPEAR RELATIVELY PLUMB BUT COMPRESSIVE TIMBER BRACING IN PLACE.
 - CONNECTION PLATE BETWEEN TRUSSES / BEAM.
 - MASONRY PIER AT THE END OF CROSSWALL. TRUSS BEARING AT WALLHEAD SITTING ON PADSTONE. CORNER PLUMB BOTH DIRECTIONS.
 - TIMBER LOUVRES.
 - CAST IRON COLUMNS SUPPORTING BEAM / TRUSS CONNECTIONS AT WALLHEAD. ELABORATELY DECORATED. PAINT MOSTLY INTACT BUT SOME SURFACE CORROSION APPARENT.
 - NO STRUCTURAL DEFECT TO NOTE TO MASONRY AT LOWER LEVEL.
 - PLUMB.
 - CABLE PEAKS LEAN IN SLIGHTLY OVER HEIGHT. 0.5 BRICK THICK WITH 1 BRICK THICK PIER AT CENTRE SUPPORTING RIDGE PURLIN.
 - NO STRUCTURAL DEFECT TO NOTE TO MASONRY AT LOWER LEVEL.
 - RECESS SQUARE 1.2R BRICK THICK.
 - RECESS SQUARE EXCEPT BOTTOM LEFT CORNER WHERE BEDJOINT SLOPES DOWN.
 - MASONRY UNBONDED AT THIS INTERFACE.



ELEVATION G
1:200

- ZONE 03 : ELEVATION G**
- COPIES AT THE TOP OF PARAPET DISPLACED. OPEN PERPEND JOINTS BETWEEN THEM CIRCA 20MM.
 - JOINT TIGHT AT CORNER INTERFACE.
 - DIAGONAL CRACKING RADIATING FROM FLAT ARCH ABOVE WINDOW. CIRCA 5-10MM THICK AT WALL HEAD OR RIGHT HAND CORNER BUT 2-3MM CLOSER TO WINDOW OPENING. ARCH CRANKED DOWN TO LEFT.
 - BED JOINT FAILURE AT CORNER. WHOLE TOP SECTION APPEARS TO BE PUSHED UP AND OUT.
 - TOP OF PARAPET RELATIVELY STRAIGHT AND LEVEL UNTIL LAST 1M ON RIGHT HAND SIDE, WHERE PARAPET AND STRING COURSE LEAN DOWN TO CORNER.
 - WINDOW OPENINGS SQUARE.
 - BED JOINTS APPEAR TO BE JACKED UP CIRCA 5-8MM.
 - KEystone APPEARS TO HAVE DROPPED DOWN CIRCA 10MM. OPEN JOINT IN FLAT ARCH.
 - 5MM HORIZONTAL CRACK FROM JAMB, REDUCING TO HAIRLINE PAST EMBEDDED METAL AT RAINWATER HOPPER.
 - WINDOW OPENING SQUARE.
 - STAIRS DOWN TO BASEMENT IN FRONT OF WALL.
 - CORNER RELATIVELY PLUMB.
 - WINDOW OPENINGS SQUARE.
 - CORNER JOINT WELL BONDED.
 - CORNER JOINT WELL BONDED.
 - PARAPET LEANS OUT FROM STRING COURSE LEVEL CIRCA 10-15MM.
 - 40MM GAP BETWEEN COPIES.
 - CHIMNEY APPEARS PLUMB, ALTHOUGH HEAVILY WEATHERED MASONRY ON TOP SECTION.
 - WINDOW OPENINGS SQUARE.
 - MASONRY DECAYED AT LOWER LEVEL.
 - EMBEDDED METAL AT HIGH LEVEL.
 - TOP OF PARAPET STRAIGHT AND LEVEL.
 - STRING COURSE STRAIGHT AND LEVEL.
 - WINDOW OPENINGS SQUARE.
 - NO STRUCTURAL DEFECT OF NOTE TO MASONRY ARCH. INFILL WITH MODERN BRICKS.
 - CORNER DAMP NEAR RAINWATER PIPE LOCATION.

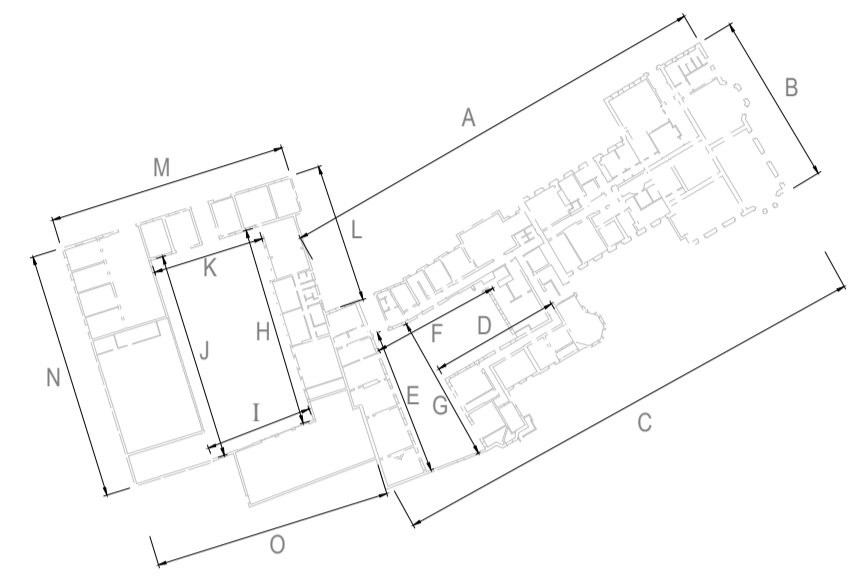


ELEVATION K
1:200

- ZONE 04 : ELEVATION K**
- RIDGELINE SAGGING BETWEEN POINTS OF SUPPORT.
 - SLOPE SAGS ACCORDING TO RIDGELINE.
 - EAVES LINE UNDLATES ALONG LENGTH.
 - FLAT ARCH LINTEL OVER OPENING AND CILL CRANKED DOWN CIRCA 30MM. EVIDENCE OF PAST REPOINTING WORK BELOW BOTTOM LEFT CILL BEARING. CIRCA 15MM FULL THICKNESS CRACK INTERNALLY.
 - LOOSE MASONRY IN JAMB OF DOOR OPENING. JAMB APPEARS TO BOW INWARD AS THOUGH PUSHED BY ADJACENT WINDOW CILL. FLAT ARCH ABOVE OPENING CRANKED DOWN TO LEFT. SPRINGER CIRCA 40MM LOWER THAN ON RIGHT.
 - FLAT ARCH ABOVE OPENING CRANKED DOWN TO LEFT.
 - FIRST FLOOR OPENING SQUARE.
 - OPEN BUTT JOINT AT THIS CROSSWALL LOCATION. CLEAR OFFSET IN VERTICALITY CIRCA 80MM MAX DISPLACEMENT AT EAVES LEVEL REDUCING TO NIL ABOVE FLAT ARCH.
 - OUTWARD (OUT OF PAGE) BULGE IN WALL IN THIS AREA AND LEANING BACK IN UNTIL EAVES LEVEL ABOVE.
 - HEAVY CAST IRON LIFTING / CRANE MECHANISMS.
 - WALLHEAD APPEARS TO HAVE BEEN REBUILT ALONG ELEVATION.
 - ARCH GEOMETRY OK ALTHOUGH BEDJOINTS SAG SLIGHTLY ABOVE CROWN.
 - OUTWARD BOW OF WALL IN THIS LOCATION AND LEANING IN TOWARDS EAVES LEVEL.
 - JAMBS OF ARCH OPENING BOW IN SLIGHTLY BOTH SIDES.
 - ARCH GEOMETRY OK.
 - BASE OF BELL TOWER CRANKED DOWN TO WEST (LEFT) AND BELL TOWER ABOVE LEANS SLIGHTLY.
 - SQUARE.
 - BUTT JOINT UP WHOLE HEIGHT WIDENING TOWARDS EAVES LEVEL. EVIDENCE OF REPOINTING BUT SINCE CRACKED.
 - SQUARE.
 - CORNER CROSSBOND BONDED TIGHTLY ALTHOUGH SOME LOOSE UNITS AT EAVES LEVEL.

GENERAL NOTES:

- THIS DRAWING IS TO BE READ IN CONJUNCTION WITH ALL RELEVANT ARCHITECTS AND ENGINEERS DRAWINGS AND SPECIFICATIONS.
- DO NOT SCALE THIS DRAWING. ANY AMBIGUITIES, OMISSIONS AND ERRORS ON DRAWINGS SHALL BE BROUGHT TO THE ENGINEERS ATTENTION IMMEDIATELY. ALL DIMENSIONS MUST BE CHECKED / VERIFIED ON SITE.
- ALL DIMENSIONS ARE IN MILLIMETRES UNLESS NOTED OTHERWISE.
- FOR GENERAL NOTES REFER TO DRAWING.



Rev.	Description	Date	By	Chkd
------	-------------	------	----	------

28 Loxther St Kendal, Cumbria, LA9 4DH
01539 724823
kendal@curtins.com
www.curtins.com

Structures • Civils • Environmental • Infrastructure • Transport Planning • Sustainability • Expert Advisory Services
Birmingham • Bristol • Cardiff • Douglas • Dublin • Edinburgh • Glasgow • Kendal • Leeds • Liverpool • London • Manchester • Nottingham

FOR COORDINATION

Client: **SHENTON GROUP**

Project: **CUERDEN HALL**

Dwg Title: **SURVEY RECORD DRAWINGS, COURTYARD AND STABLEYARD ELEVATIONS**

Project No:	Size:	Date:	Drawn By:	Designed By:	Checked By:
077572	A1	01/02/2021	SJ	SJ	DC

Project Code: Originator: Zone: Level: Type: Discipline: Category / Number: Rev: 077572 - CUR - ZZ - ZZ - DR - S - 21002 - 02