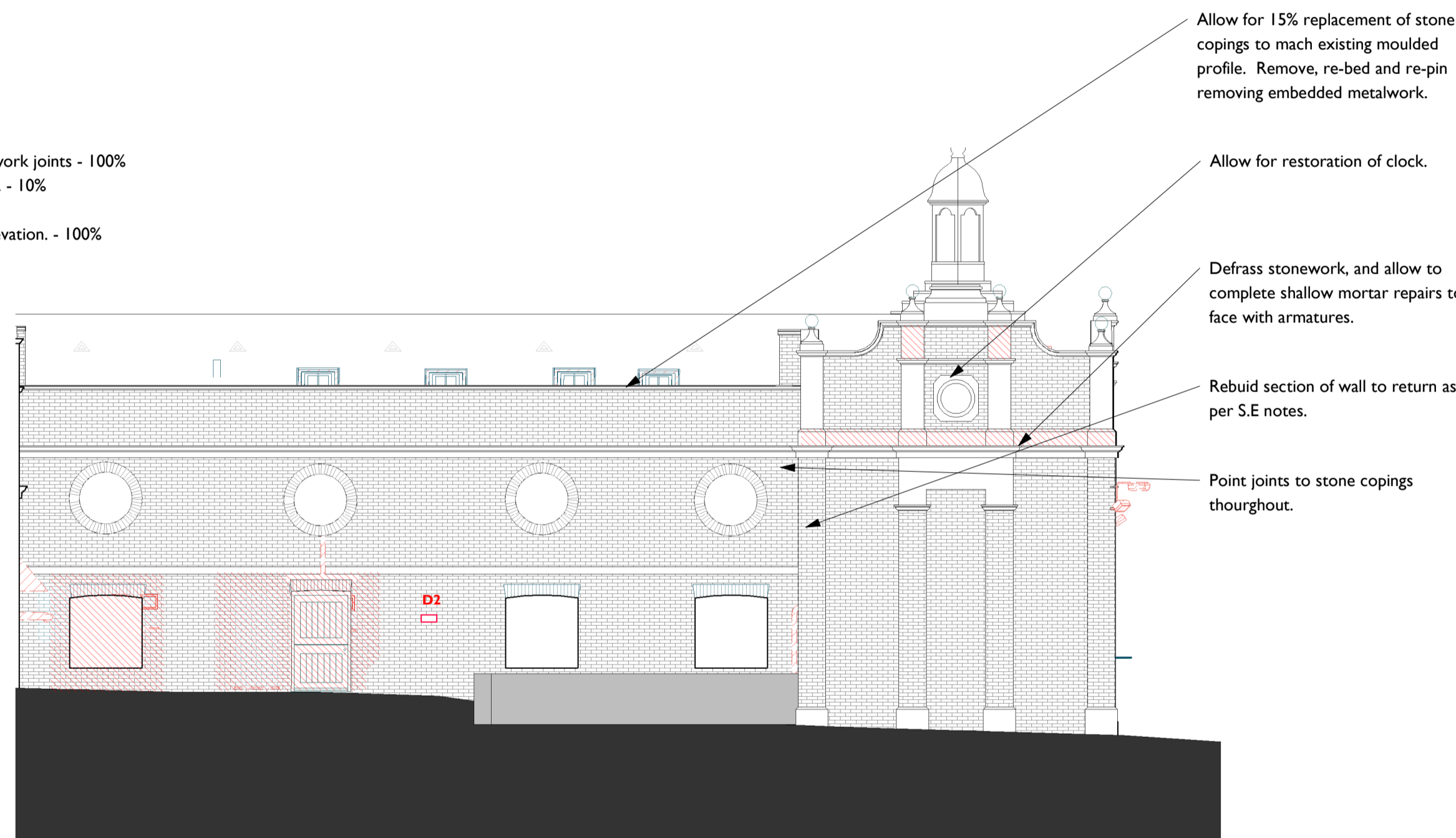


Type A1 - Repointing standard brickwork joints - 100%
 Type B1 - Indent repair to brickwork. - 30% excluding rebuilding above wall line.
 Type C1 - Doff clean - 100%

Refer to structural engineers report for existing wall in this location.

1 Stableyard Elevation 3 (SE3) Repairs w/Demo
 2201 I : 100

Type A1 - Repointing standard brickwork joints - 100%
 Type B1 - Indent repair to brickwork. - 10%
 Type C1 - Doff clean - 100%
 Type C3 - Clean all stonework on elevation. - 100%



Allow for 15% replacement of stone copings to match existing moulded profile. Remove, re-bed and re-pin removing embedded metalwork.

Allow for restoration of clock.

Defrass stonework, and allow to complete shallow mortar repairs to face with armatures.

Rebuild section of wall to return as per S.E notes.

Point joints to stone copings throughout.

Existing UPVC gutter removed. New cast iron / aluminium gutter to match profile of East elevation. with new downpipes with ears.

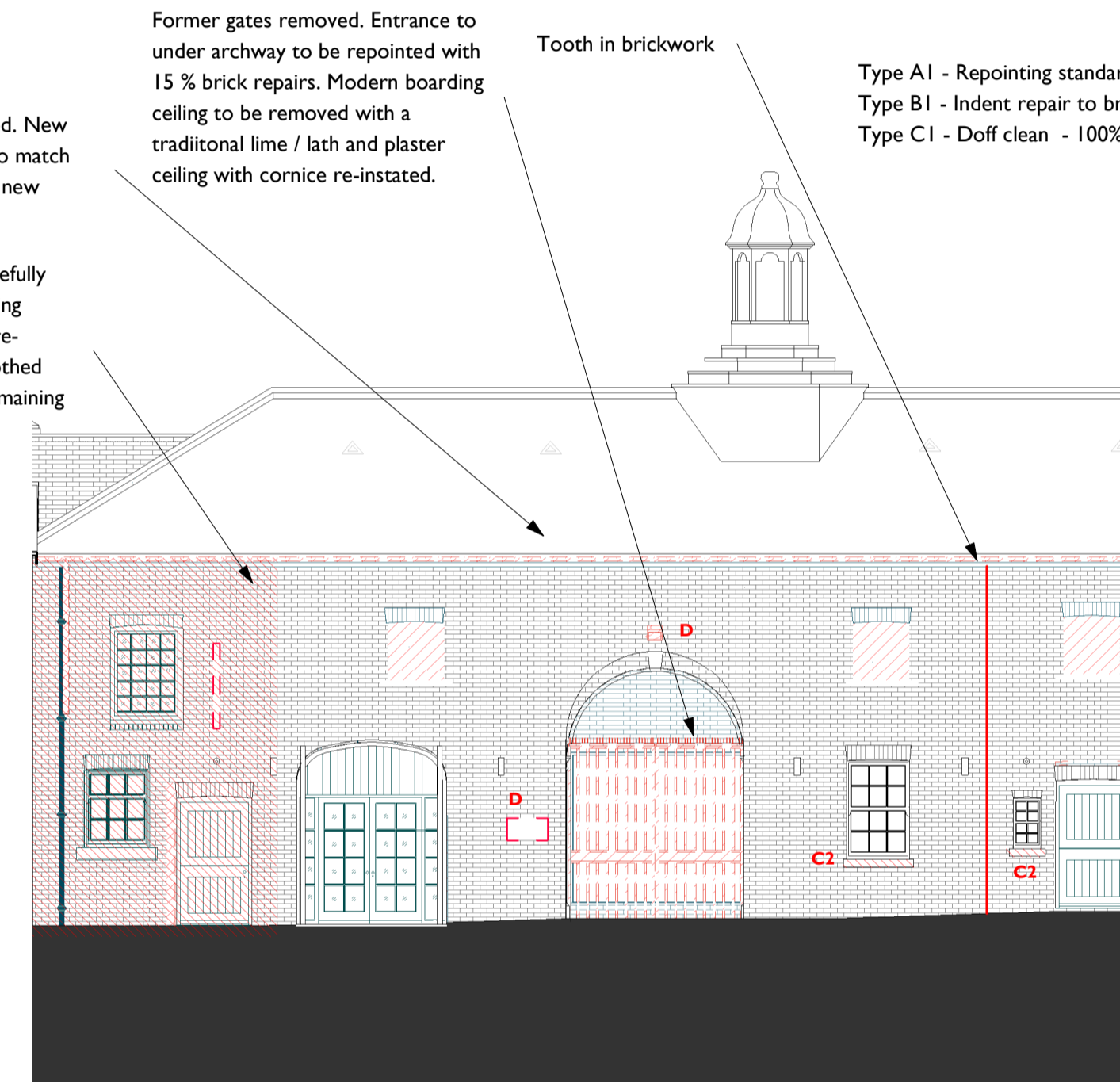
Unstable brickwork to be carefully taken down and rebuilt, existing opening to be recorded and re-instated. Brickwork to be toothed into historic brickwork on remaining elevation.

Former gates removed. Entrance to under archway to be repointed with 15% brick repairs. Modern boarding ceiling to be removed with a traditional lime / lath and plaster ceiling with cornice re-instated.

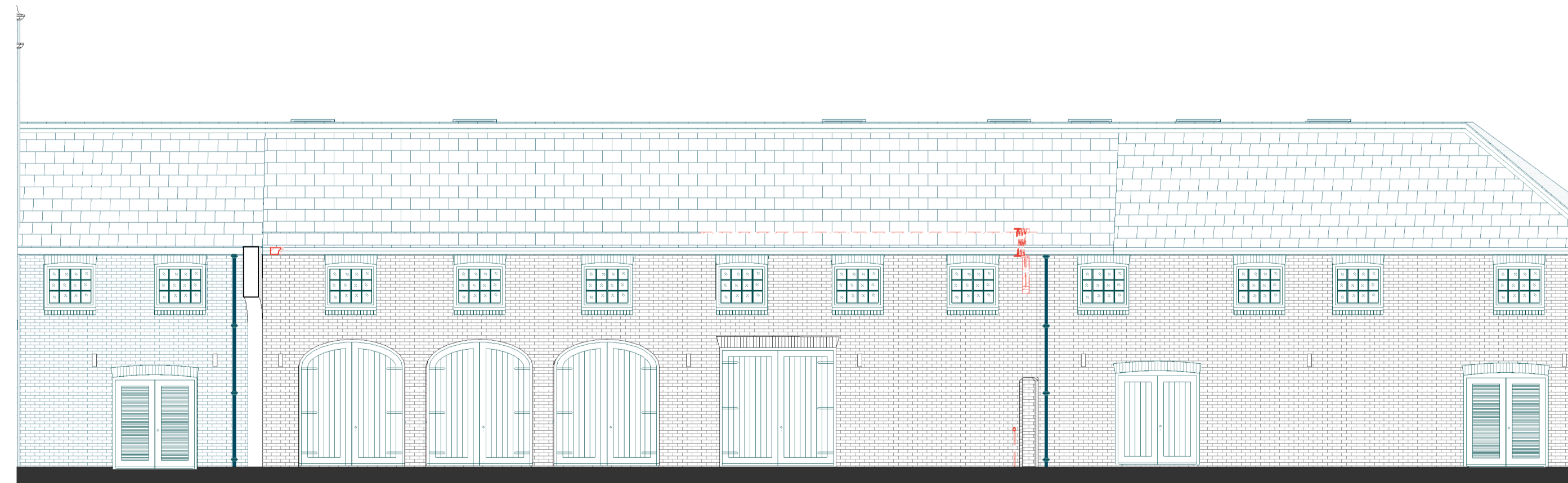
Tooth in brickwork

Type A1 - Repointing standard brickwork joints - 100%
 Type B1 - Indent repair to brickwork. - 10%
 Type C1 - Doff clean - 100%

3 Stableyard Elevation 5 (SE5) Repairs w/Demo
 2201 I : 100



2 Stableyard Elevation 4 (SE4) Repairs w/Demo
 2201 I : 100



Type A1 - Repointing standard brickwork joints - 100%
 Type B1 - Indent repair to brickwork. - 30%
 Type C1 - Doff clean - 100%

Additional allowances required due to condition of wall. Refer to structural report.

Existing brickwork facade to be retained where physically possible and built to match.

4 Stableyard Elevation 8 (SE8) Repairs w/Demo
 2201 I : 100

Notes:
 Drawings are based on survey data and may not accurately represent what is physically present.

Do not scale from this drawing. All dimensions are to be verified on site before proceeding with the work.

All dimensions are in millimeters unless noted otherwise.

Purcell shall be notified in writing of any discrepancies.

Key Plan
 not to scale
 Repair Key

Drawings are to be read in conjunction with the Roof repair drawing and the Structural Engineer reports.

Generally.

All external masonry elevations are to receive DOFF treatment to clean algae and biological growths off masonry.

All copings to be checked. Allowance generally to remove embedded metalwork, rebed and pin copings and point joints. Allowance made for replacement and indents.

All external fixtures and fittings are to be removed from the elevations and made good.

An additional provisional sum of 20% to entire works noted should be allowed above items stated to cover access restrictions.

Type A1 - Repointing standard brickwork joints in lime mortar
 Type A2 - Repointing fine ashlar joints in lime mortar.

Type B1 - Indent repair to brickwork.
Handmade clay brickwork to match historic brickwork in coursing, size, colour and texture.

Type B2 - Indent repair to Stone Ashlar
Stonework to match colour, texture, grain and density of historic stonework

Type B3 - Indent repair to stone moulding
Stonework to match colour, texture, grain, density and profile of existing stonework. Stainless steel pins.

Type B4 - Composite Indent Repair to stone moulding (surround or string course)
Composite repair to include for removal of existing embedded ironwork, replacement of stainless steel pins at regular centres. Historic material to undergo analysis for composition.

Type B5 - Defrass stonework and complete mortar repair.
Mortar repair to match moulding, colour, texture of adjacent stonework.

Type C1 - Doff clean
 Type C2 - Remove paint off stonework with a poultice paint remover and Doff clean.

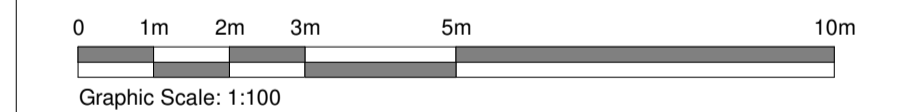
Type C3 - Clean stonework
 Type C4 - Poultice clean to remove surface salts within masonry

Type D - Remove fixture off elevation and make good masonry / stonework behind.

Type D2 - Remove fitting from wall and complete stone / brick indent.

Type E - Pin Crack to stonework

Type E - Pin Crack to stonework



PO1	21/04/21	For Planning
REV	DATE	DESCRIPTION

CLIENT
 Colin Shenton

PROJECT
 Cuerden Hall, Chorley

JOB NUMBER
 240729

PURCELL

TITLE
 Proposed Repair Elevations Sheet 2

SIZE	SCALE	LAST REVISED	DRAWN	CHECKED
A1L	As Shown	07/04/2021	ZB	

REV **SUITABILITY/REASON FOR ISSUE**
P01 **S04 - For Planning**

DRAWING NUMBER
 240729-PUR-00-XX-DR-A-2201

St James, 79 Oxford Street, Manchester, M1 4FQ
 © PURCELL 2019. PURCELL IS THE TRADING NAME OF PURCELL ARCHITECTURE LTD.