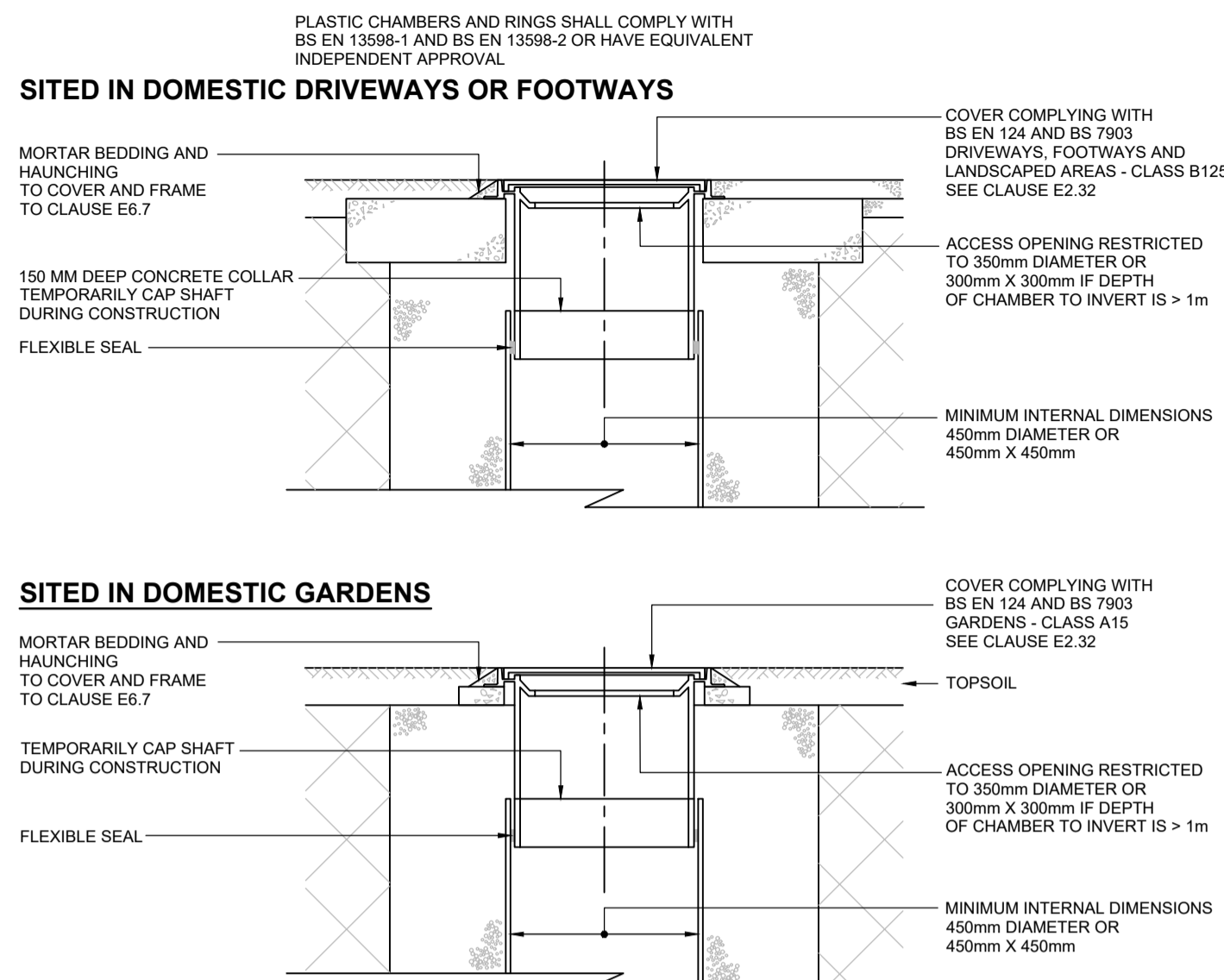


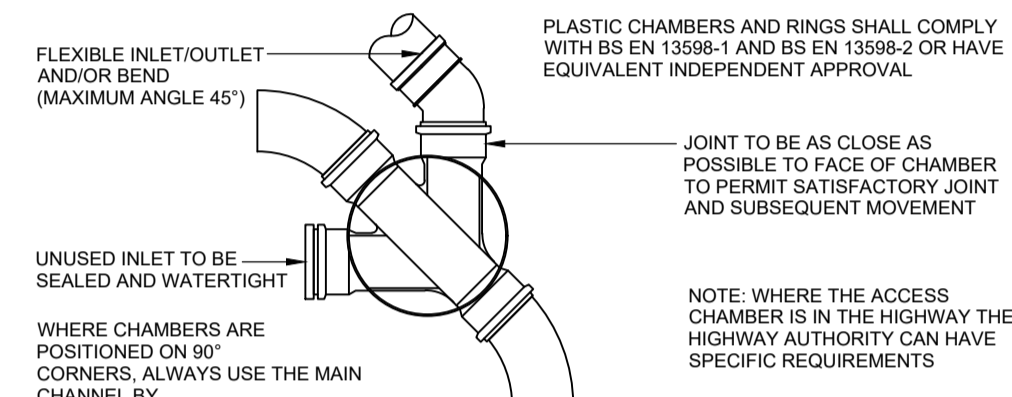
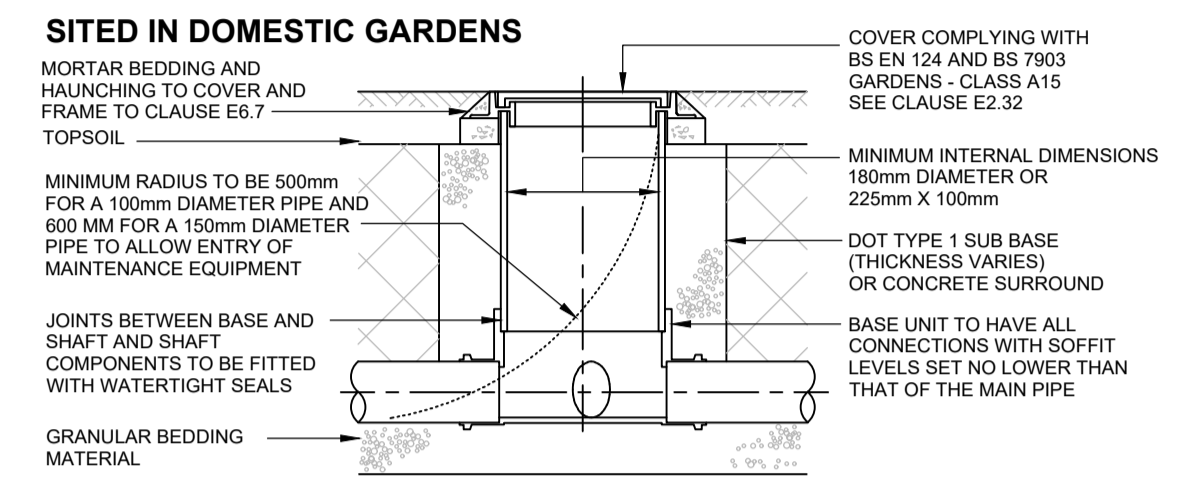
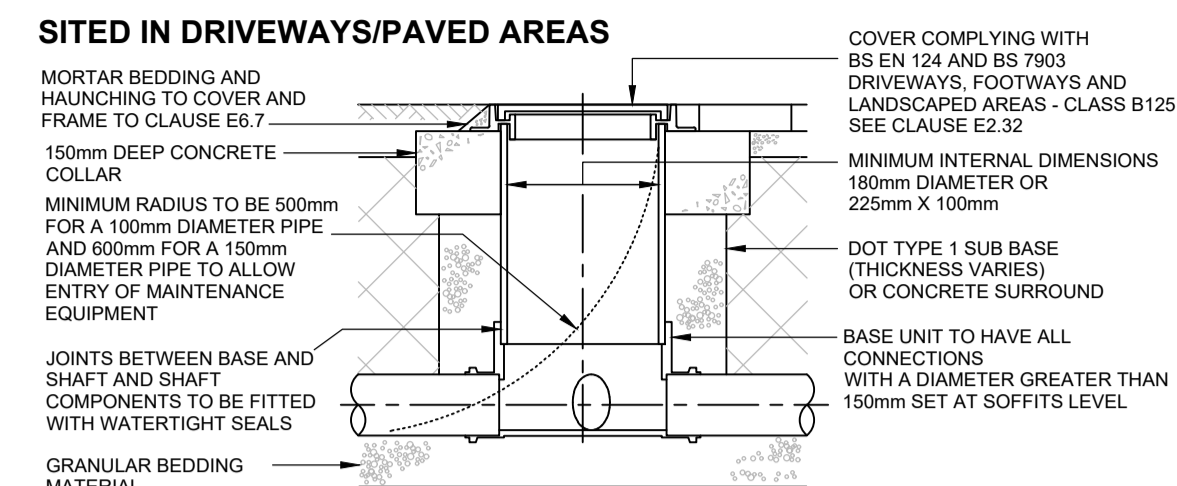
TYPICAL INSPECTION CHAMBER DETAIL - TYPE 3 (FLEXIBLE MATERIAL DETAIL)
 MAXIMUM DEPTH FROM COVER LEVEL TO SOFFIT OF PIPE IN AREAS SUBJECT TO VEHICLE LOADING 3 M, NON-ENTRY NTS



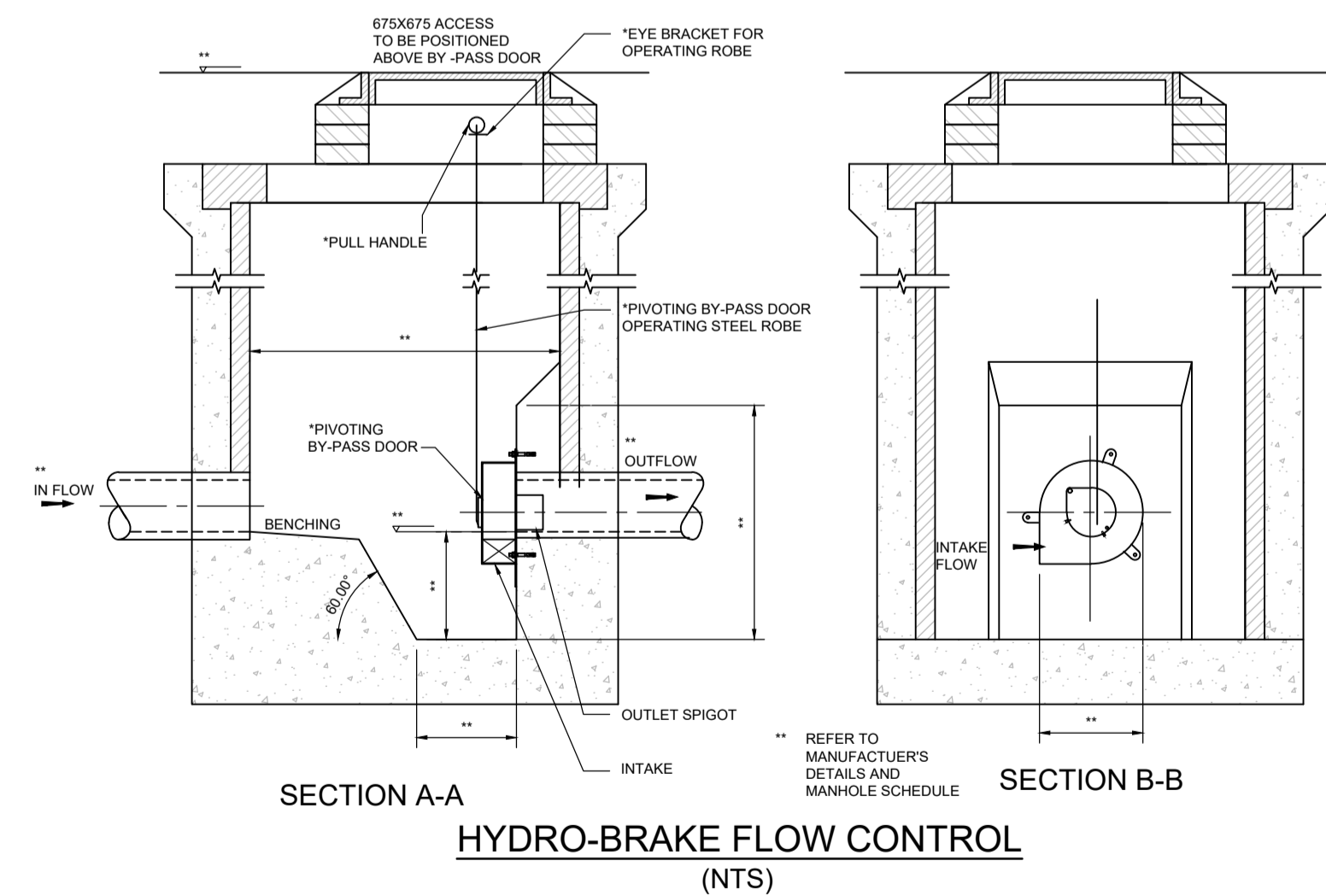
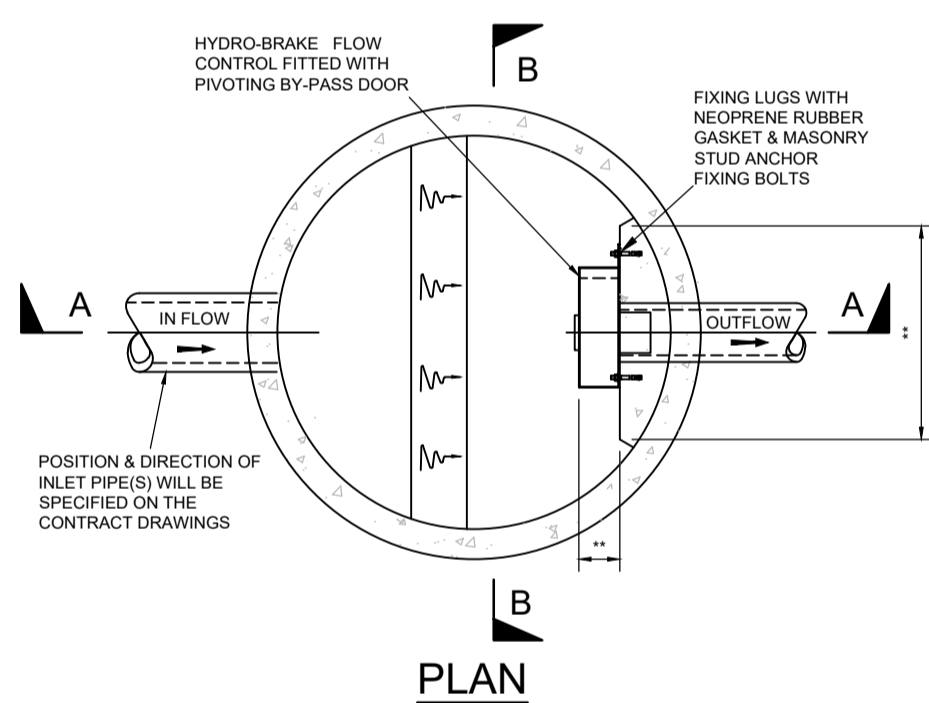
NOTE: WHERE THE ACCESS CHAMBER IS IN THE HIGHWAY THE HIGHWAY AUTHORITY CAN HAVE SPECIFIC REQUIREMENTS
ALTERNATIVE TOP DETAILS FOR LIGHT VEHICLE LOADING AND LANDSCAPED AREAS - TYPE 3 NTS

MINIMUM DIMENSIONS FOR ACCESS FITTINGS AND INSPECTION CHAMBERS					
TYPE OF ACCESS	DEPTH TO INVERT FROM COVER LEVEL (m)	MINIMUM INTERNAL DIMENSIONS (1)		MINIMUM CLEAR OPENING SIZE (1)	
		LENGTH x WIDTH (mm x mm)	CIRCULAR (mm)	LENGTH x WIDTH (mm x mm)	CIRCULAR (mm)
RODDING EYE	-	AS DRAIN BUT MINIMUM 100mm.	-	-	SAME SIZE AS PIPEWORK
ACCESS FITTING	0.6m OR LESS EXCEPT WHERE SITUATED IN A CHAMBER	150 x 100 225 x 100	150 225	150 x 100 (1) 225 x 100 (1)	SAME SIZE AS ACCESS FITTING
INSPECTION CHAMBER					
SHALLOW	0.6m OR LESS	225 x 100	190 (2)	190 (1)	
MEDIUM	1.2m OR LESS	450 x 450	450	MIN 430 x 430	430
DEEP	GREATER THAN 1.2m	450 x 450	450	MAX 300 x 300 (3)	ACCESS RESTRICTED TO MAX 350 (3)

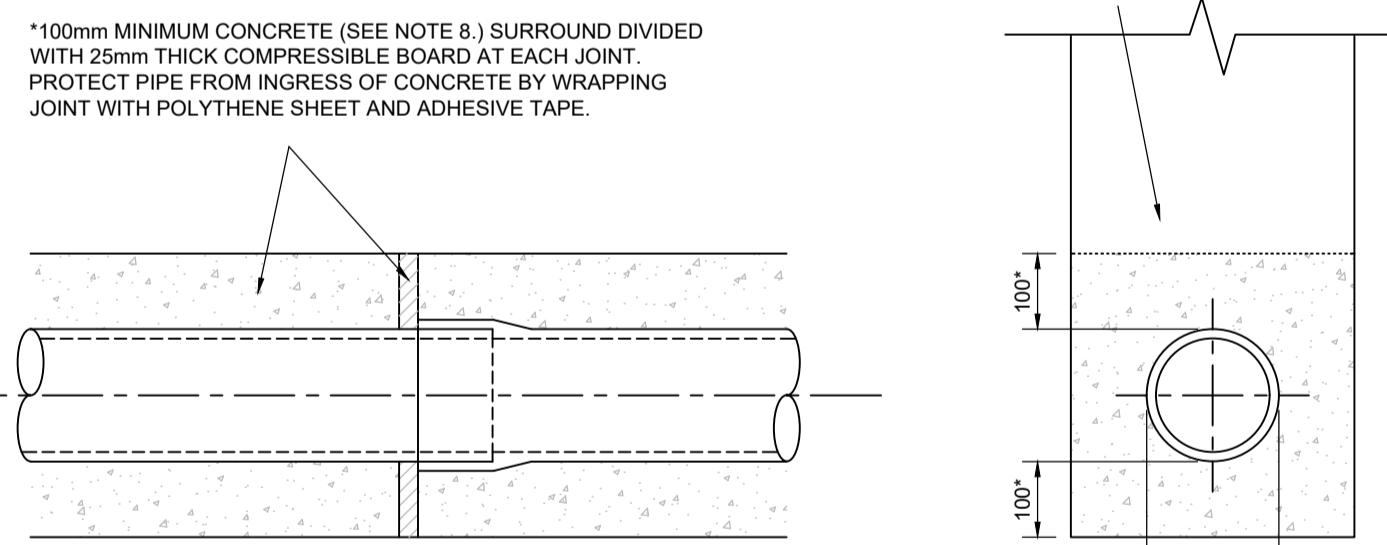
NOTES:
 (1) THE CLEAR OPENING MAY BE REDUCED BY 20mm IN ORDER TO PROVIDE PROPER SUPPORT FOR THE COVER AND FRAME.
 (2) DRAINS UP TO 150mm DIAMETER.
 (3) A LARGER CLEAR OPENING COVER MAY BE USED IN CONJUNCTION WITH A RESTRICTED ACCESS. THE SIZE IS RESTRICTED FOR HEALTH AND SAFETY REASONS TO DETER ENTRY.



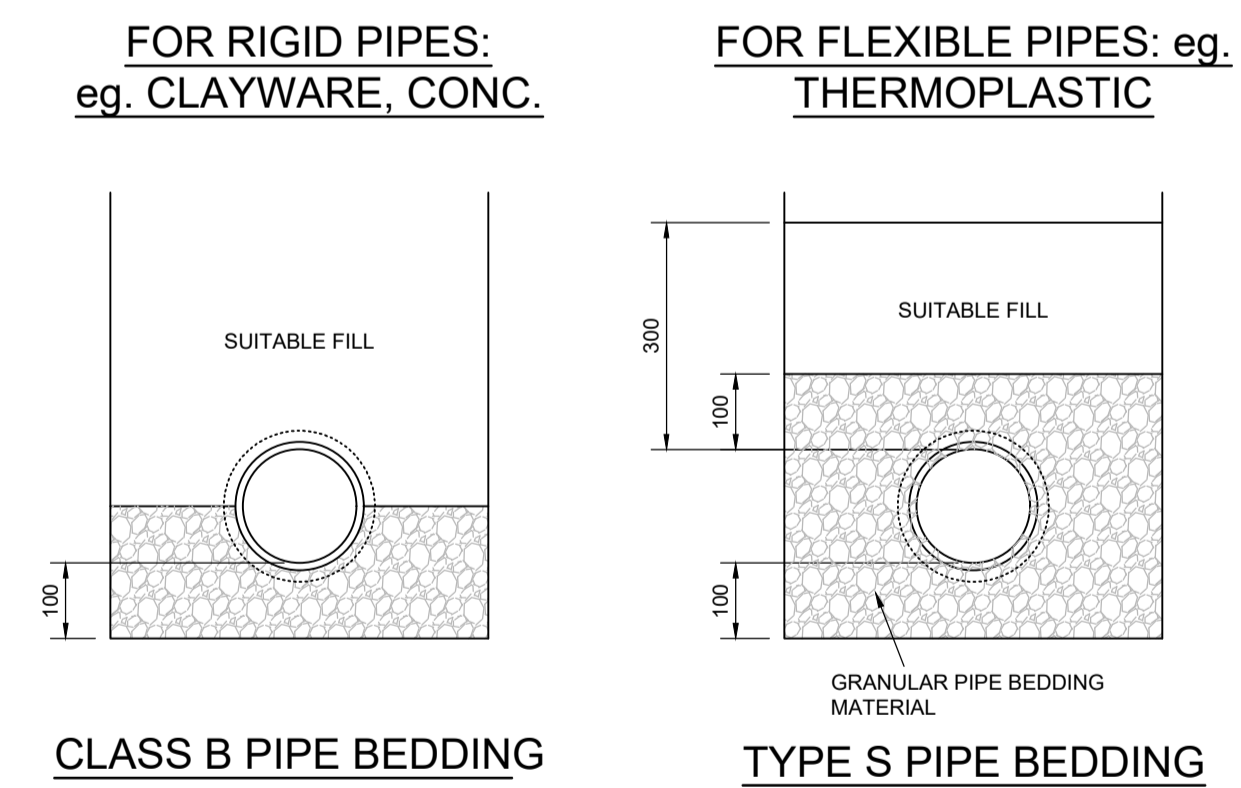
TYPICAL INSPECTION CHAMBER DETAIL TYPE 4 (FLEXIBLE MATERIAL DETAIL)
 MAXIMUM DEPTH FROM COVER LEVEL TO SOFFIT OF PIPE 2, NON-ENTRY NTS



HYDRO-BRAKE FLOW CONTROL (NTS)



SIDE ELEVATION CROSS SECTION TYPE Z BEDDING (CONCRETE ENCASED PIPES) FOR PIPES WITH LESS THAN 1.2m COVER NOT TO SCALE
 * FOR HEAVY DUTY/INDUSTRIAL APPLICATIONS INCLUDING MAIN ROADS OR ADOPTABLE ROADS INCREASE CONCRETE TO 150mm



TYPICAL PIPE BEDDING DETAILS
 SUITABLE FILL - THE SUITABLE FILL SHALL BE SUITABLE FOR THE LOCATION AND SHALL BE CAREFULLY COMPACTED TO PROVIDE A STABLE FILL WITHOUT DAMAGING THE PIPE. FILL UNDER CAR PARKING AREAS, SHARED DRIVES AND PRIVATE ROADS SHALL BE WELL COMPACTED GRADED GRANULAR MATERIAL. FILL UNDER ADOPTABLE ROADS MAY NEED TO BE TYPE 1 GRANULAR SUB-BASE MATERIAL - CHECK WITH HIGHWAY AUTHORITY IF APPROPRIATE.
 GRANULAR MATERIAL - FOR RIGID PIPES THE GRANULAR MATERIAL SHOULD CONFORM TO BS EN: 1610 Annex B Table B.15 AND SHOULD BE SINGLE SIZE MATERIAL OR GRADED MATERIAL FROM 5mm UP TO A MAXIMUM SIZE OF: 10mm FOR 100mm DIAMETER PIPES, 14mm FOR 150mm DIAMETER PIPES, 20mm FOR PIPES FROM 150mm TO 600mm DIAMETER AND 40mm FOR PIPES MORE THAN 600mm DIAMETER.

- Notes:**
- Do not scale this drawing.
 - This drawing is to be read in conjunction with all other relevant drawing issues and specification.
 - All building materials, components and workmanship is to comply with the appropriate building regulations, British Standards and codes of practice and the appropriate manufacturers recommendations.
 - For all specialist work see relevant drawings.
 - Any discrepancies, errors or omissions are to be reported to the project coordinator for further instructions before commencement of works.
 - The engineer is not responsible for dimensions, except where shown on their drawings. All setting out information, dimensions, etc., shall be calculated from the architect's drawings. For dimensioned layouts of walls see architect's drawings.
- ALL DIMENSIONS IN MILLIMETERS UNLESS STATED OTHERWISE.
 - DRAWING TO BE FOLLOWED IN CONJUNCTION WITH ALL ACCOMPANYING DRAWINGS AND SPECIFICATIONS AS LISTED IN THE CONTRACT DOCUMENTS.
 - ALL BUILDING DRAINAGE TO BE INSTALLED AND TESTED IN COMPLIANCE WITH THE BUILDING REGULATIONS 2000 DRAINAGE AND WASTE DISPOSAL APPROVED DOCUMENT H 2002 EDITION.
 - ALL COMPONENTS AND MATERIALS ARE TO BE MANUFACTURED AND SUPPLIED IN ACCORDANCE WITH THE RELEVANT BRITISH STANDARDS, AND LAID AND BACKFILLED IN ACCORDANCE WITH MANUFACTURERS INSTRUCTIONS AND THE RELEVANT BRITISH STANDARDS.
 - THE CONTRACTOR SHALL BEFORE COMMENCING THE WORKS, VERIFY ALL SITE AND SETTING OUT DIMENSIONS. THE CONTRACTOR SHALL BE RESPONSIBLE FOR THE TRUE AND PROPER SETTING OUT OF THE WORKS AND FOR THE CORRECTNESS OF THE POSITION, LEVELS, DIMENSIONS, AND ALIGNMENT OF ALL PARTS OF THE WORKS.
 - SMALL LIGHTWEIGHT ACCESS COVERS SHOULD BE SECURED (FOR EXAMPLE WITH SCREWS) TO DETER UNAUTHORISED ACCESS.
 - INSPECTION CHAMBERS AND MANHOLES IN BUILDINGS TO HAVE MECHANICALLY FIXED AIRTIGHT COVERS UNLESS THE DRAIN ITSELF HAS WATER-TIGHT ACCESS COVERS.
 - MANHOLES DEEPER THAN 1m TO HAVE GALVANISED STEEL STEP IRONS OR FIXED LADDERS.
 - ALL ABOVE GROUND DRAINAGE TO INCORPORATE RODDING ACCESS FACILITIES.
 - INSITU CONCRETE FOR USE IN GENERAL DRAINAGE WORKS, GRADE TO BS: 5328, USE AS FOLLOWS:

CLASS 1 SULFATE CONDITIONS:	
ADAPTABLE STANDARD WORKS AND AREAS SUBJECT TO HEAVY LOADING	GEN 3 or ST4
AREAS SUBJECT TO LIGHT LOADING eg. HOUSING AND PRIVATE DRIVES, SMALL CAR PARKS.	GEN1 or ST2
FOR BURIED CONCRETE EXPOSED TO OTHER SULFATE CONDITIONS:	
CLASS 2	FND 2
CLASS 3	FND 3
CLASS 4A	FND 4A
CLASS 4B	FND 4B

Rev	Description	Iss	Chk	Date
2	Stage 3 Issue	RAC	STB	21.12.20
1	First Issue	RAC	STB	27.11.20

Client
TUNBRIDGE WELLS BOROUGH COUNCIL

Project
BENHALL MILL DEPOT

Drawing
DRAINAGE CONSTRUCTION DETAILS SHEET 1 OF 2

Scale @ A1
 N.T.S.

PRELIMINARY

crofton THE HOPPERS GOBLANDS FARM BUSINESS CENTRE HADLOW KENT TN11 0LT
 T 01732 850440
 E kent@crofton-design.com
 W www.crofton-design.com

Consulting Engineers
 London | Kent | East Sussex

Job No.	Drg. No.	Rev
20012	D-0002	P2

20012-CFN-00-XX-DR-D-0002-S2-P2

