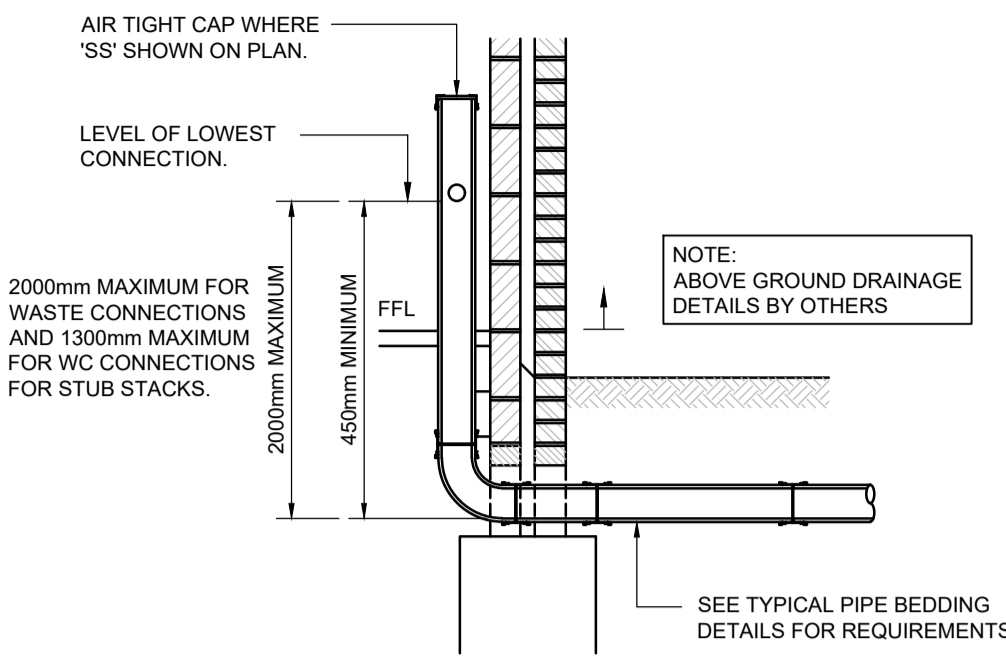
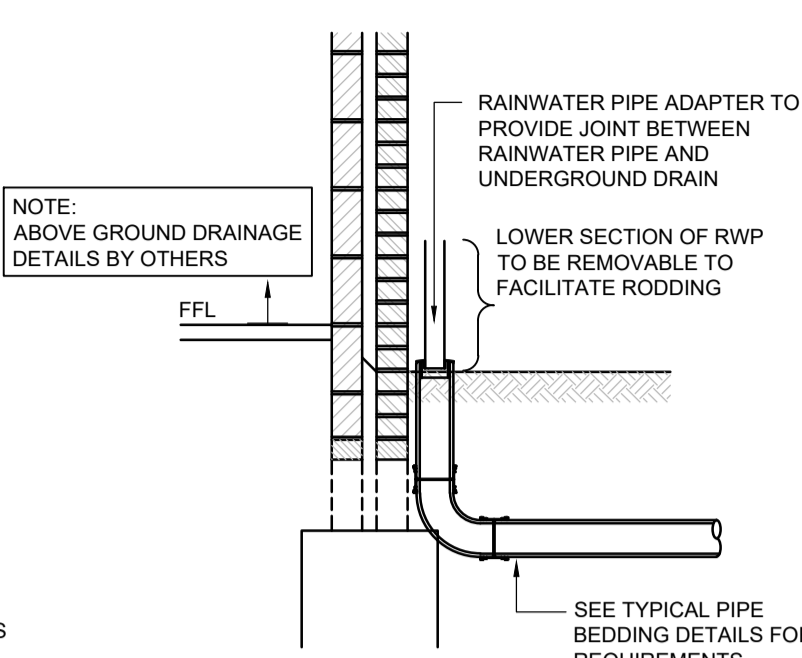


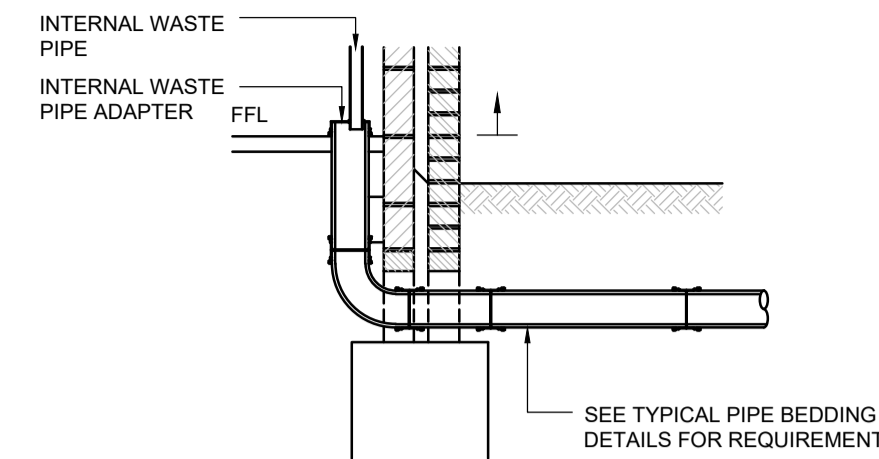
TYPICAL WC CONNECTION DETAIL
SCALE 1:25



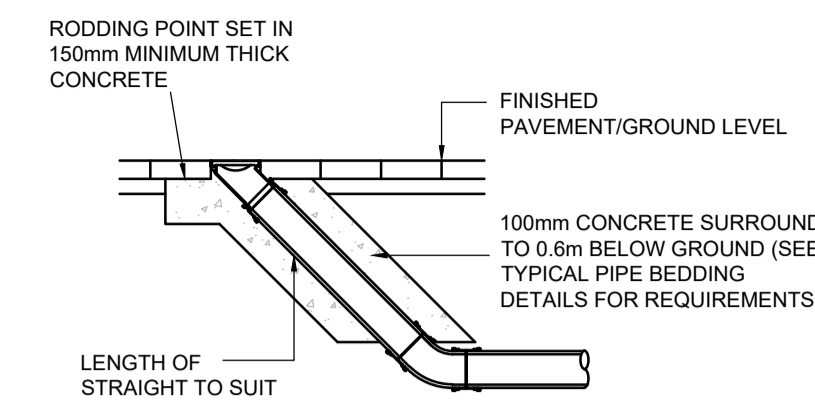
TYPICAL STUB STACK PIPE (SS) CONNECTION DETAIL
SCALE 1:25



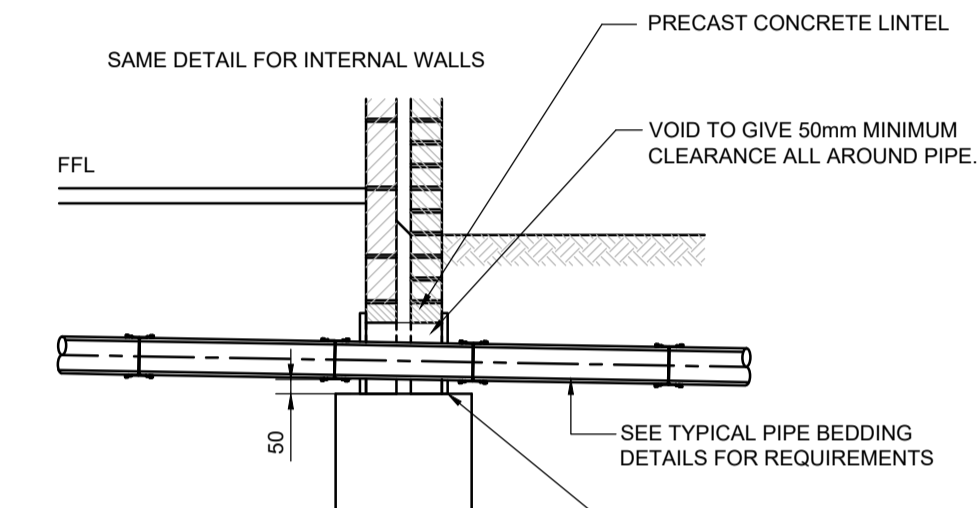
TYPICAL RAINWATER PIPE CONNECTION POINT DETAIL
SCALE 1:25



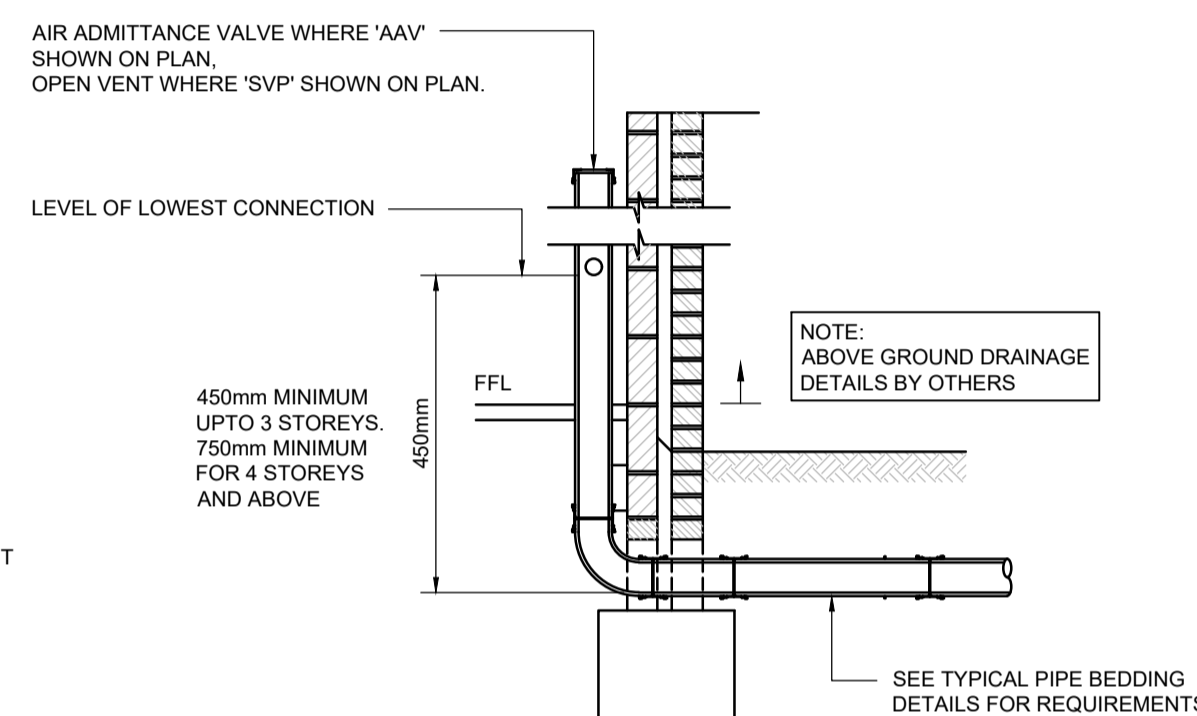
TYPICAL INTERNAL WASTE PIPE CONNECTION DETAIL
SCALE 1:25



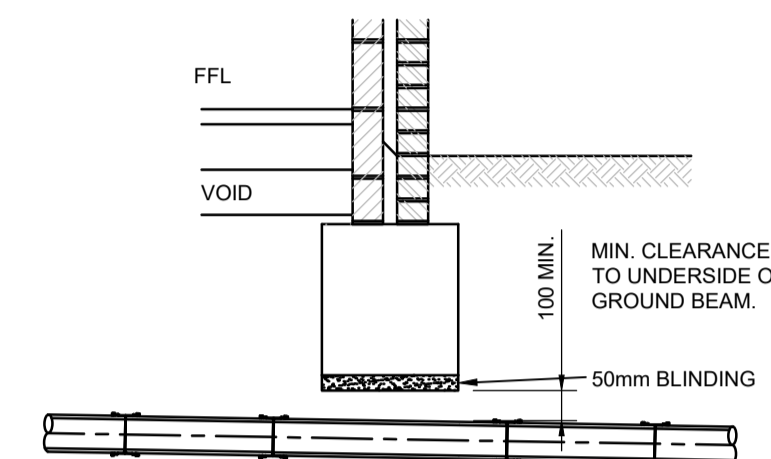
TYPICAL RODDING EYE ACCESS POINT
SCALE 1:25



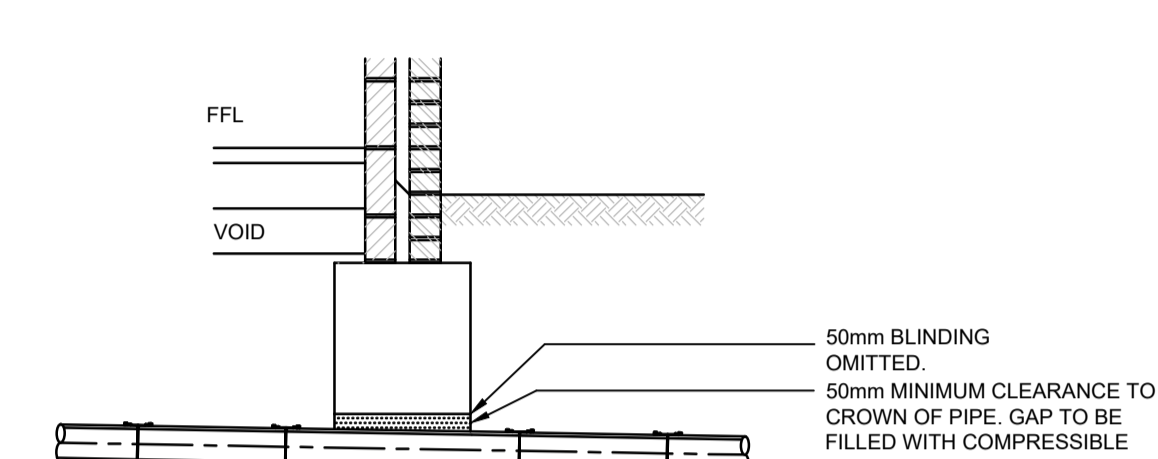
TYPICAL SECTION OF DRAIN PASSING OVER FOUNDATION
SCALE 1:25



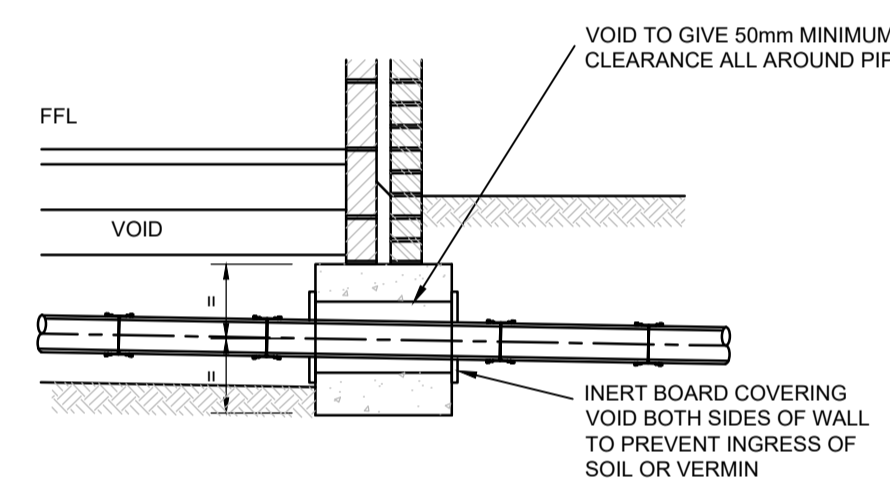
TYPICAL SOIL VENT PIPE (SVP) CONNECTION DETAIL
SCALE 1:25



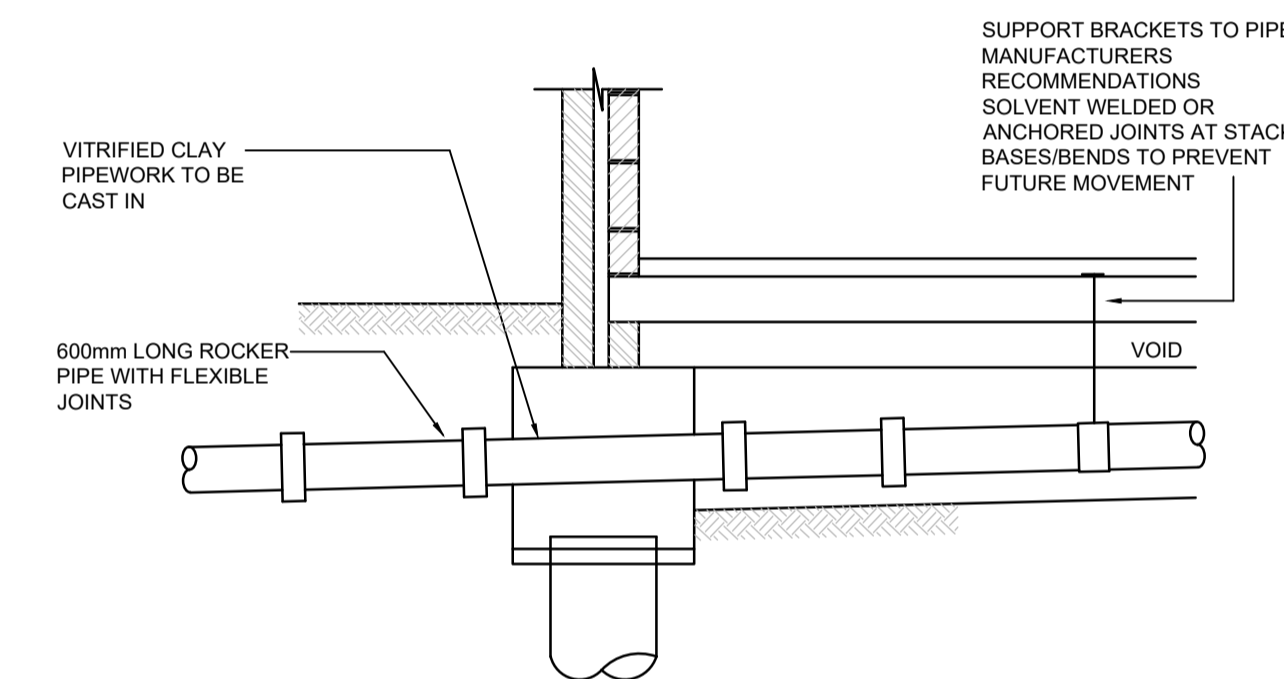
TYPICAL DETAIL OF DRAIN PASSING UNDER GROUND BEAM - ALTERNATIVE 1
SCALE 1:25



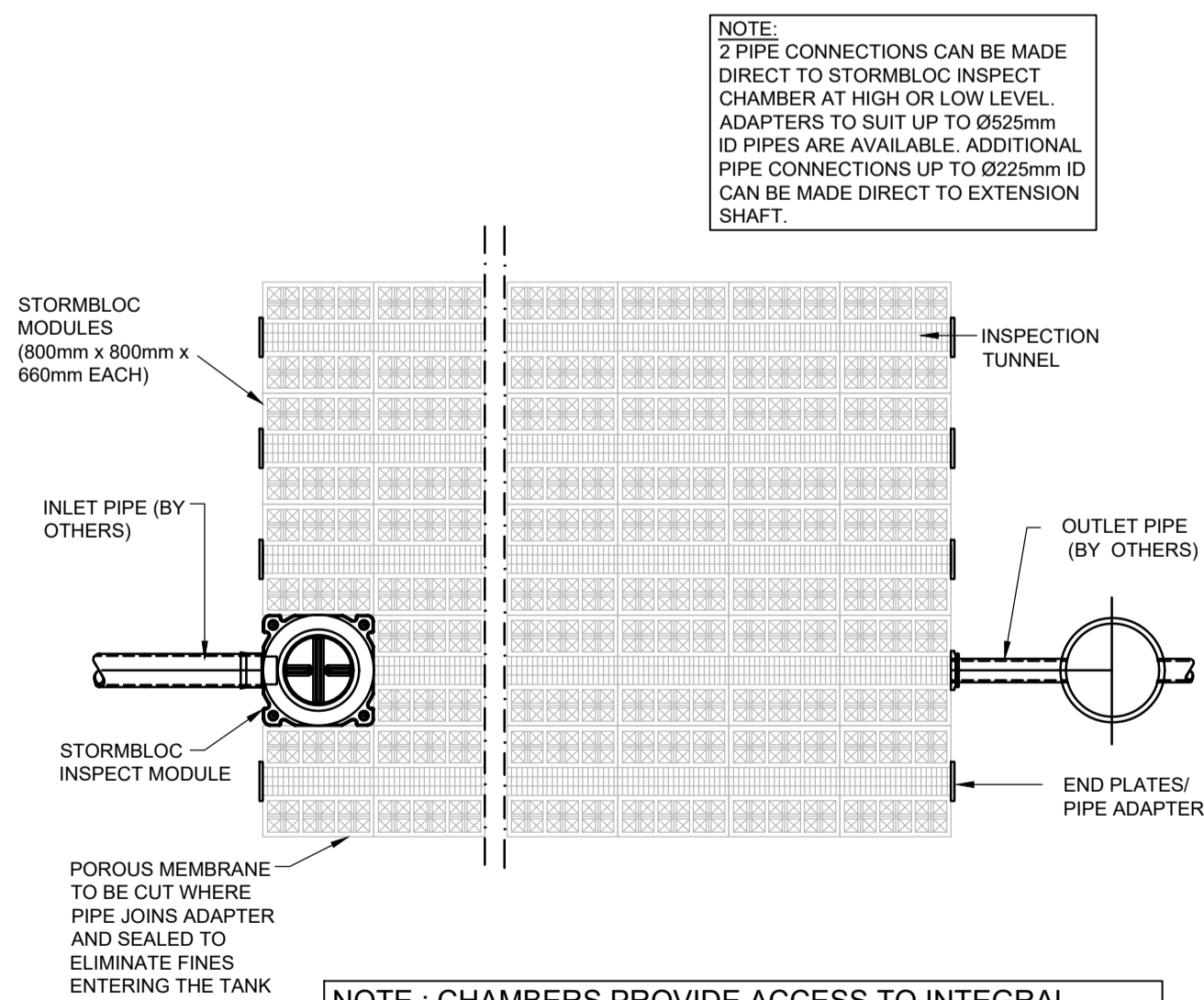
TYPICAL DETAIL OF DRAIN PASSING UNDER GROUND BEAM - ALTERNATIVE 2
SCALE 1:25



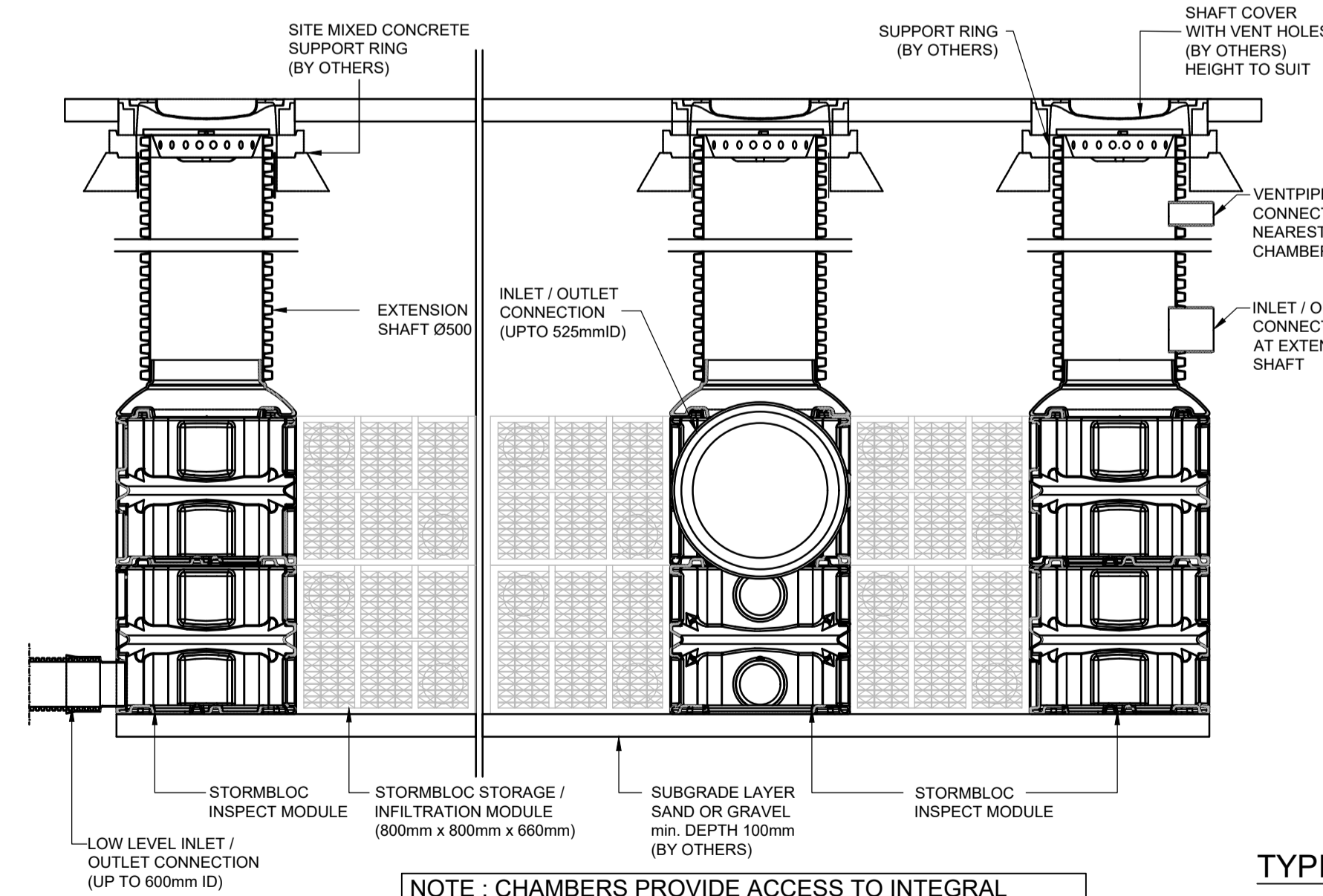
TYPICAL DETAIL OF DRAIN PASSING THROUGH GROUND BEAM - OPTION 1 (uPVC)
SCALE 1:25



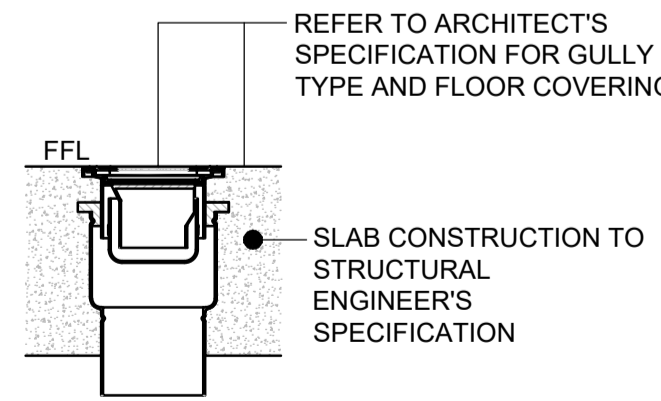
TYPICAL DETAIL OF DRAIN PASSING THROUGH GROUND BEAM - OPTION 2 (VC)
SCALE 1:25



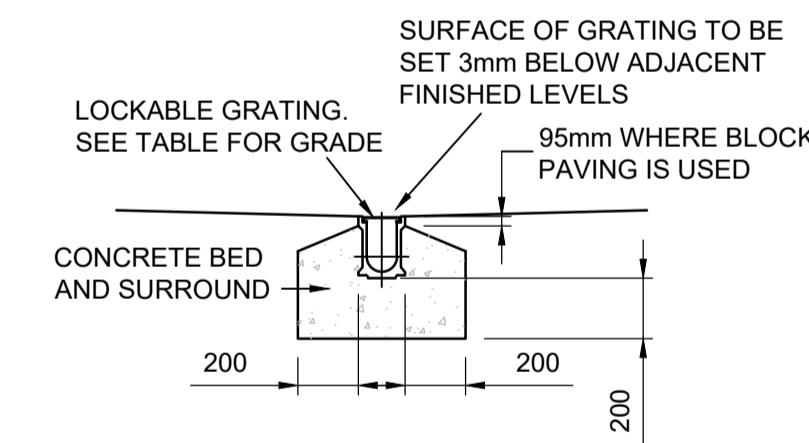
STORMBLOCK SURFACE WATER ATTENUATION RESERVOIR - PLAN (NTS)



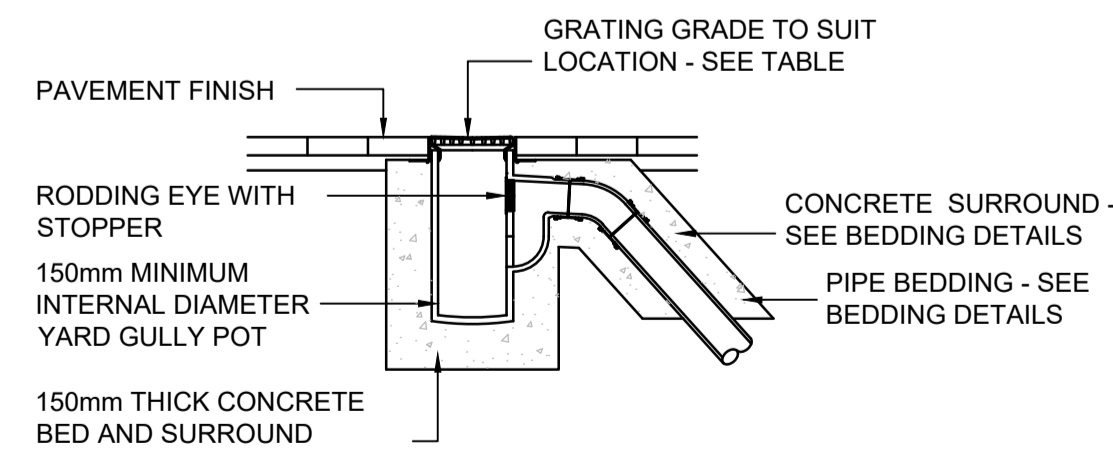
TYPICAL SECTION THROUGH STORMBLOCK SURFACE WATER ATTENUATION RESERVOIR (NTS)



TYPICAL FLOOR GULLY DETAIL
SCALE NTS



TYPICAL SECTION THROUGH CHANNEL DRAIN
SCALE 1:25



TYPICAL YARD GULLY DETAIL
SCALE 1:25

- Notes:**
- Do not scale this drawing.
 - This drawing is to be read in conjunction with all other relevant drawing issues and specification.
 - All building materials, components and workmanship is to comply with the appropriate building regulations, British Standards and codes of practice and the appropriate manufacturers recommendations.
 - For all specialist work see relevant drawings.
 - Any discrepancies, errors or omissions are to be reported to the project coordinator for further instructions before commencement of works.
 - The engineer is not responsible for dimensions, except where shown on their drawings. All setting out information, dimensions, etc. shall be calculated from the architect's drawings. For dimensioned layouts of walls see architect's drawings.
- ALL DIMENSIONS IN MILLIMETERS UNLESS STATED OTHERWISE.
 - DRAWING TO BE FOLLOWED IN CONJUNCTION WITH ALL ACCOMPANYING DRAWINGS AND SPECIFICATIONS AS LISTED IN THE CONTRACT DOCUMENTS.
 - ALL BUILDING DRAINAGE TO BE INSTALLED AND TESTED IN COMPLIANCE WITH THE BUILDING REGULATIONS 2000 DRAINAGE AND WASTE DISPOSAL APPROVED DOCUMENT H 2002 EDITION.
 - ALL COMPONENTS AND MATERIALS ARE TO BE MANUFACTURED AND SUPPLIED IN ACCORDANCE WITH THE RELEVANT BRITISH STANDARDS, AND LAID AND BACKFILLED IN ACCORDANCE WITH MANUFACTURERS INSTRUCTIONS AND THE RELEVANT BRITISH STANDARDS.
 - THE CONTRACTOR SHALL, BEFORE COMMENCING THE WORKS, VERIFY ALL SITE AND SETTING OUT DIMENSIONS. THE CONTRACTOR SHALL BE RESPONSIBLE FOR THE TRUE AND PROPER SETTING OUT OF THE WORKS AND FOR THE CORRECTNESS OF THE POSITION, LEVELS, DIMENSIONS, AND ALIGNMENT OF ALL PARTS OF THE WORKS.
 - SMALL LIGHTWEIGHT ACCESS COVERS SHOULD BE SECURED (FOR EXAMPLE WITH SCREWS) TO DETER UNAUTHORISED ACCESS.
 - INSPECTION CHAMBERS AND MANHOLES IN BUILDINGS TO HAVE MECHANICALLY FIXED AIRTIGHT COVERS UNLESS THE DRAIN ITSELF HAS WATERTIGHT ACCESS COVERS.
 - MANHOLES DEEPER THAN 1m TO HAVE GALVANISED STEEL STEP IRONS OR FIXED LADDERS.
 - ALL ABOVE GROUND DRAINAGE TO INCORPORATE RODDING ACCESS FACILITIES.
 - INSITU CONCRETE FOR USE IN GENERAL DRAINAGE WORKS, GRADE TO BS: 5328, USE AS FOLLOWS:

CLASS 1 SULFATE CONDITIONS:	
ADAPTABLE STANDARD WORKS AND AREAS SUBJECT TO HEAVY LOADING	GEN 3 or ST4
AREAS SUBJECT TO LIGHT LOADING eg HOUSING AND PRIVATE DRIVES, SMALL CAR PARKS.	GEN1 or ST2
FOR BURIED CONCRETE EXPOSED TO OTHER SULFATE CONDITIONS:	
CLASS 2	FND 2
CLASS 3	FND 3
CLASS 4A	FND 4A
CLASS 4B	FND 4B

NOTE:
WALLS FLOORS & FOUNDATIONS SHOWN ON THIS DRAWING ARE INDICATIVE ONLY. REFER TO STRUCTURAL ENGINEERS DRAWINGS FOR TYPICAL WALL/FLOOR/FOUNDATIONS SECTIONS.

Rev	Description	Iss	Chk	Date
2	Stage 3 Issue	AC	STB	21.12.20
1	First Issue	RAC	STB	27.11.20

Client
TUNBRIDGE WELLS BOROUGH COUNCIL

Project
BENHALL MILL DEPOT

Drawing
DRAINAGE CONSTRUCTION DETAILS SHEET 2 OF 2

Scale @ A1
1:25

PRELIMINARY

crofton
THE HOPPERS
GOBLANDS FARM BUSINESS CENTRE
CENETERY LANE
HADLOW
KENT TN11 0LT
T 01732 850440
E kent@crofton-design.com
W www.crofton-design.com
Consulting Engineers
London | Kent | East Sussex

Job No.	Drg. No.	Rev
20012-CFN-00-XX-DR-D-0003-S2-P2	20012 D-0003	P2

