

# DESIGN PROPOSAL

LAND REAR OF THE BLUE BELL INN, LOW STREET,  
EAST DRAYTON, NOTTINGHAMSHIRE, DN22 0LN





# PROPOSED MASTERPLAN

LAND REAR OF THE BLUE BELL INN, LOW STREET,  
EAST DRAYTON, NOTTINGHAMSHIRE, DN22 0LN



**KEY (LANDSCAPING)**

- T= PROPOSED TREE PLANTING
- S= PROPOSED SHRUB PLANTING
- G= PROPOSED GROUND COVER PLANTING

FOR FURTHER INFORMATION ON LANDSCAPING SPECIFICATION PLEASE REFER TO APPROVED CONDITION 12 DOCUMENT.

**KEY (LEVELS)**

- 00.00 LEVELS AS EXISTING
- 00.00 LEVELS AS PROPOSED IN BOX

PROPOSED MASTERPLAN BASED ON APPROVED PLANS DATED 12 MAY 2008.  
DWG NO. BB/04/01REVC WITH A FEW REVISIONS BASED ON FEEDBACK.

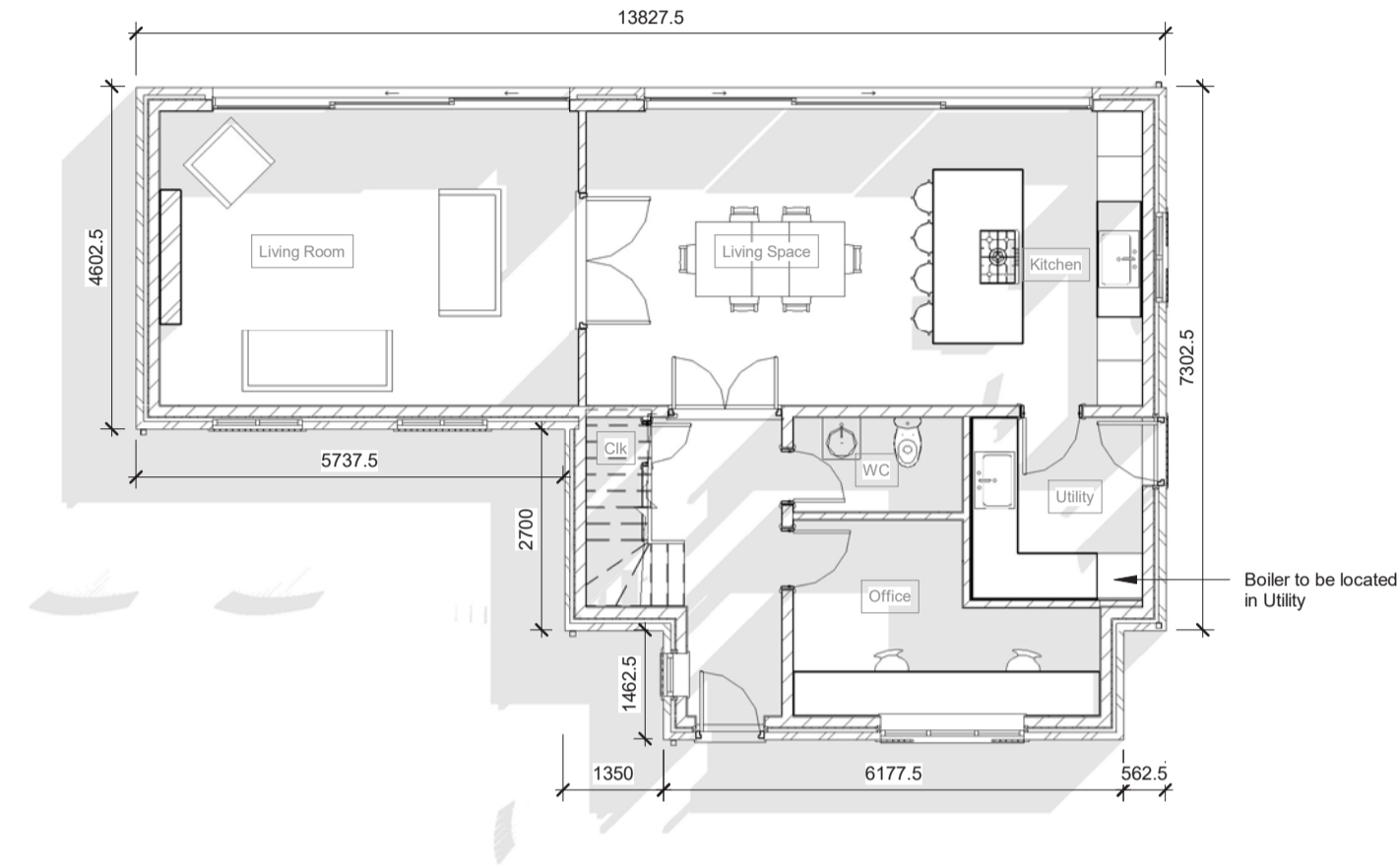
# HOUSE TYPES

LAND REAR OF THE BLUE BELL INN, LOW STREET,  
EAST DRAYTON, NOTTINGHAMSHIRE, DN22 0LN

# HOUSE TYPE 01

LAND REAR OF THE BLUE BELL INN, LOW STREET,  
EAST DRAYTON, NOTTINGHAMSHIRE, DN22 0LN

GROUND FLOOR GIA - 80.30M<sup>2</sup> / 864.34FT<sup>2</sup>  
FIRST FLOOR GIA - 78M<sup>2</sup> / 839.56FT<sup>2</sup>



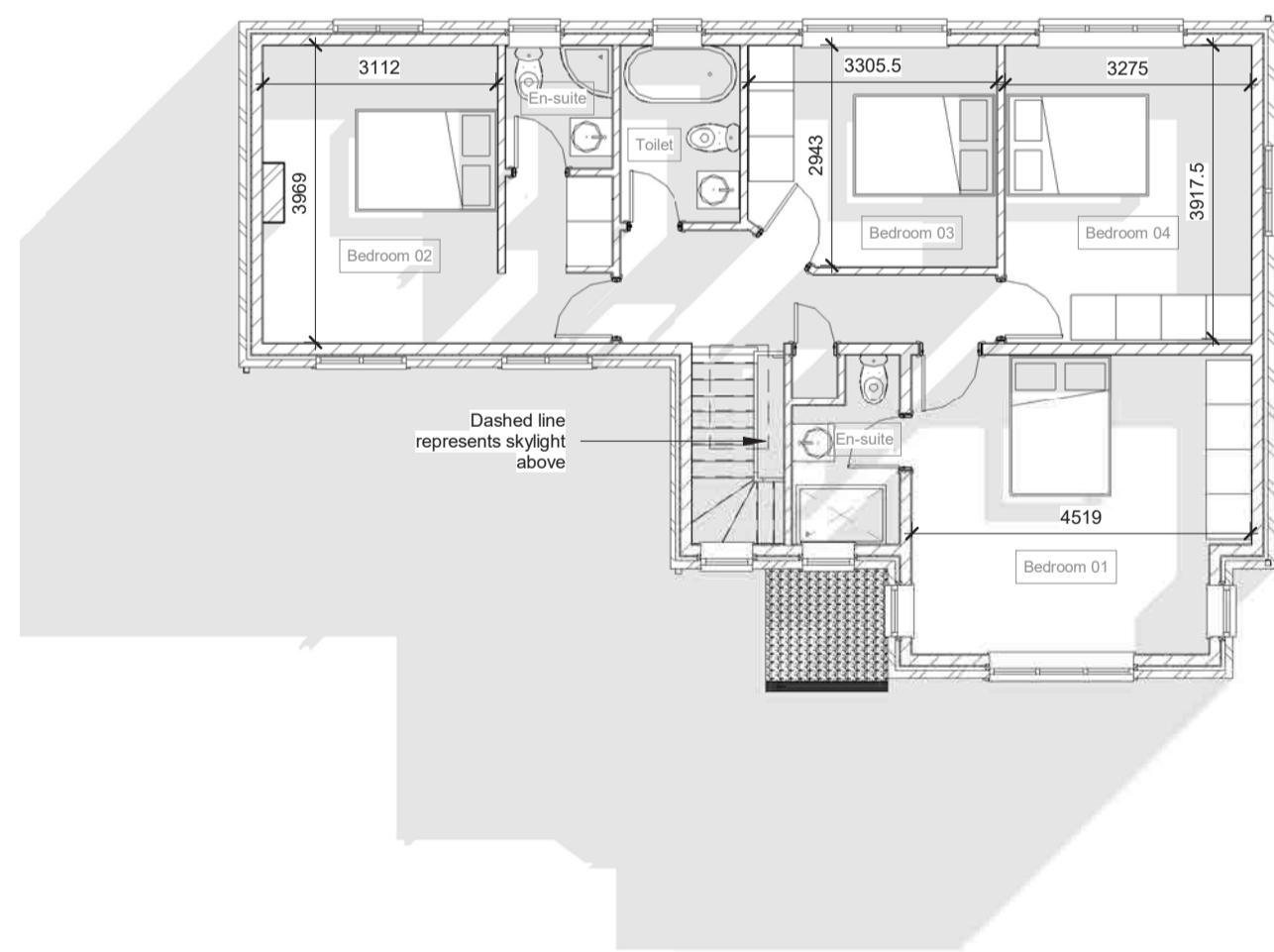
HOUSE 1 - GROUND FLOOR  
esc: 1:100



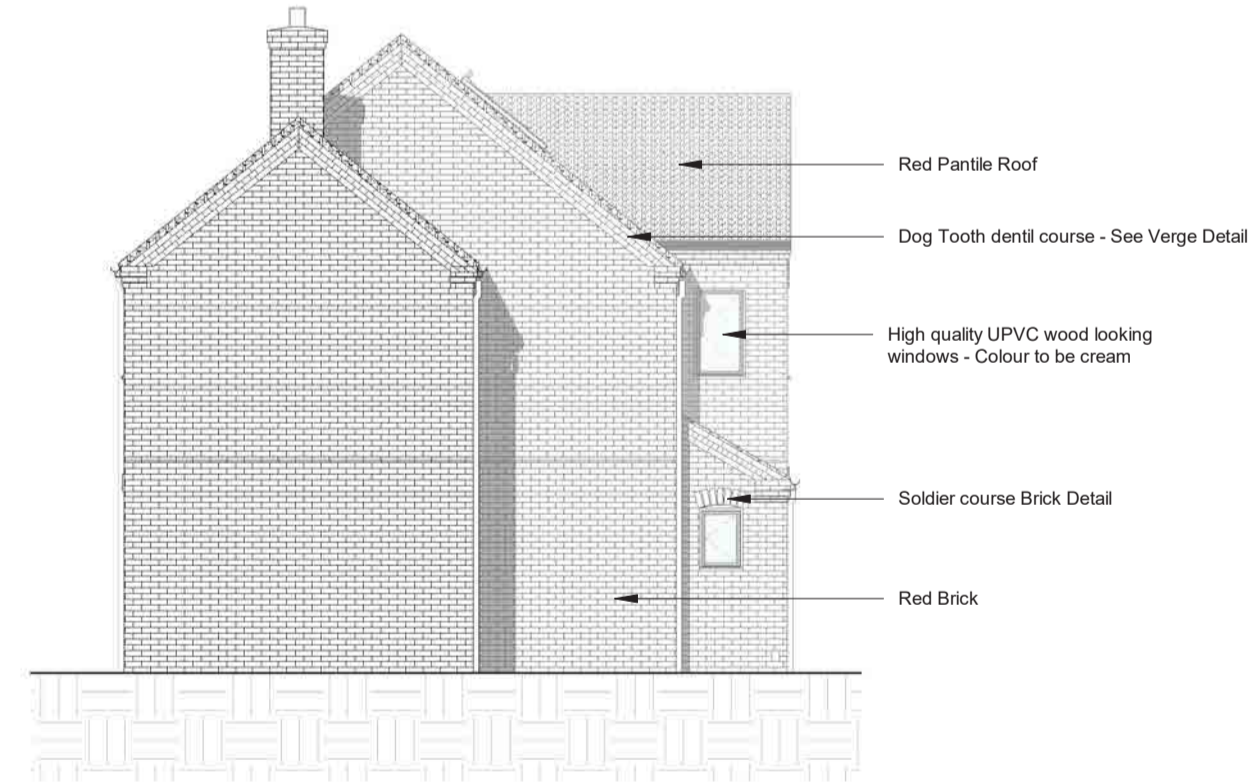
HOUSE 1 - FRONT ELEVATION  
esc: 1:100



HOUSE 1 - REAR ELEVATION  
esc: 1:100



HOUSE 1 - FIRST FLOOR  
esc: 1:100



HOUSE 1 - LEFT ELEVATION  
esc: 1:100



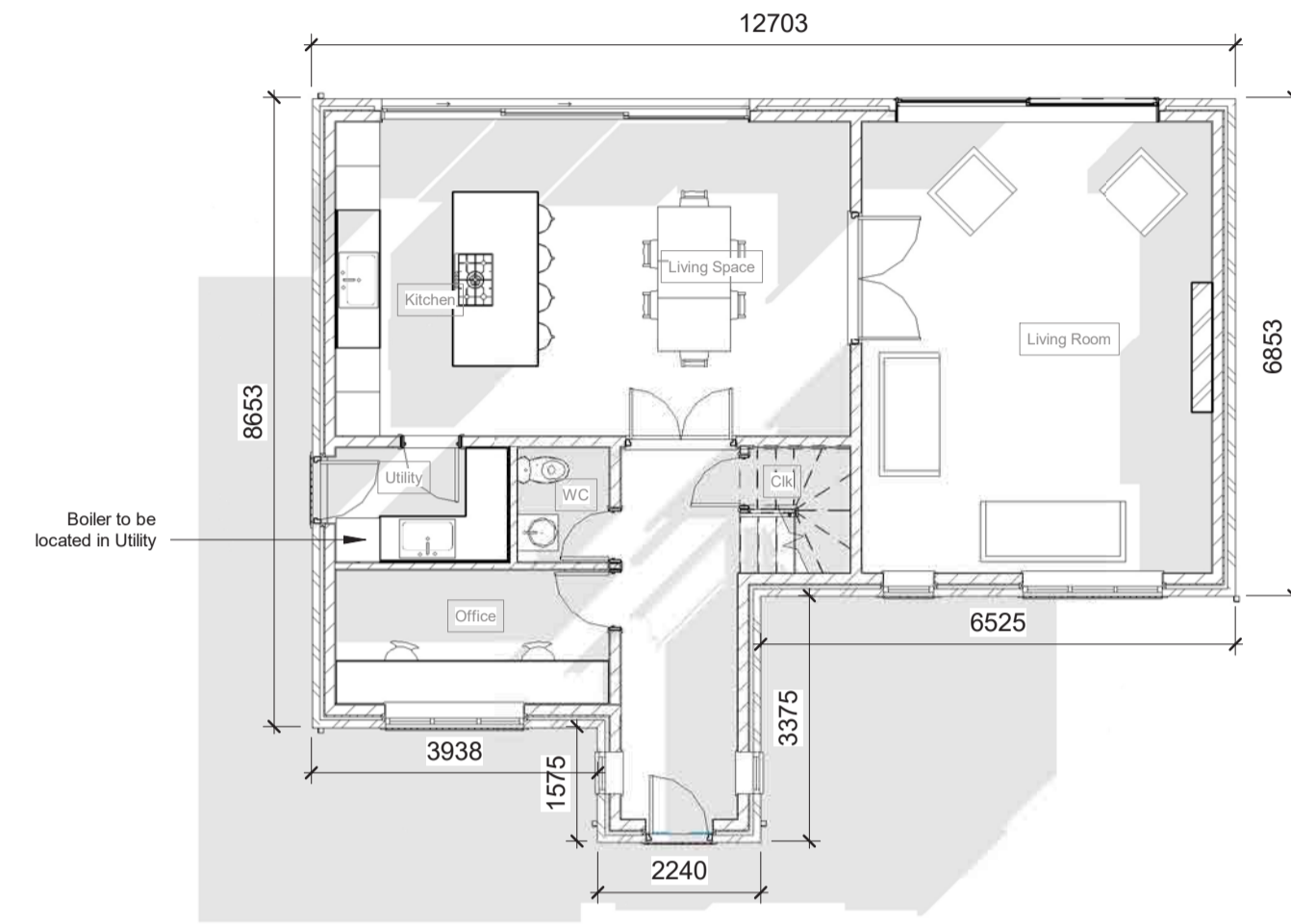
HOUSE 1 - RIGHT ELEVATION  
esc: 1:100



# HOUSE TYPE 02

LAND REAR OF THE BLUE BELL INN, LOW STREET,  
EAST DRAYTON, NOTTINGHAMSHIRE, DN22 0LN

GROUND FLOOR GIA - 87.30M2 / 939.69FT2  
FIRST FLOOR GIA - 84.78M2 / 912.56FT2



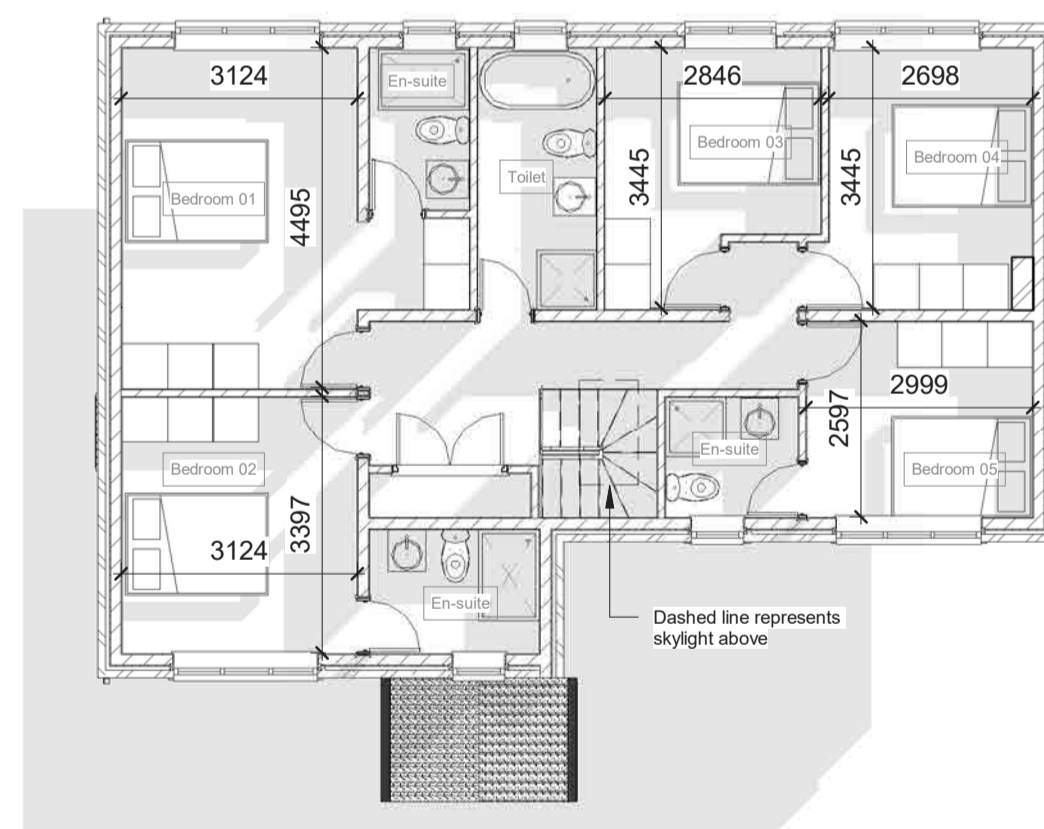
HOUSE 2 - GROUND FLOOR  
scale: 1:100



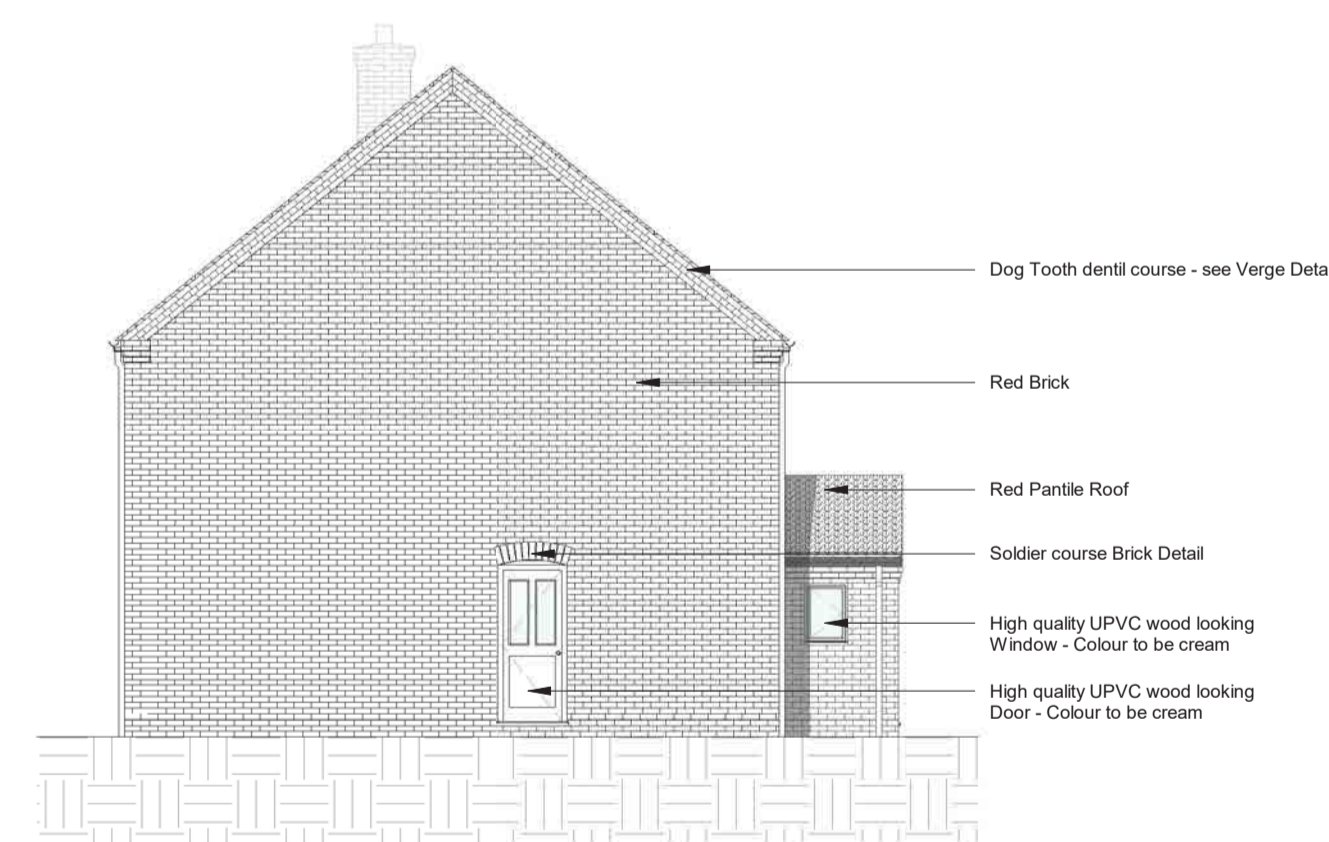
HOUSE 2 - FRONT ELEVATION  
scale: 1:100



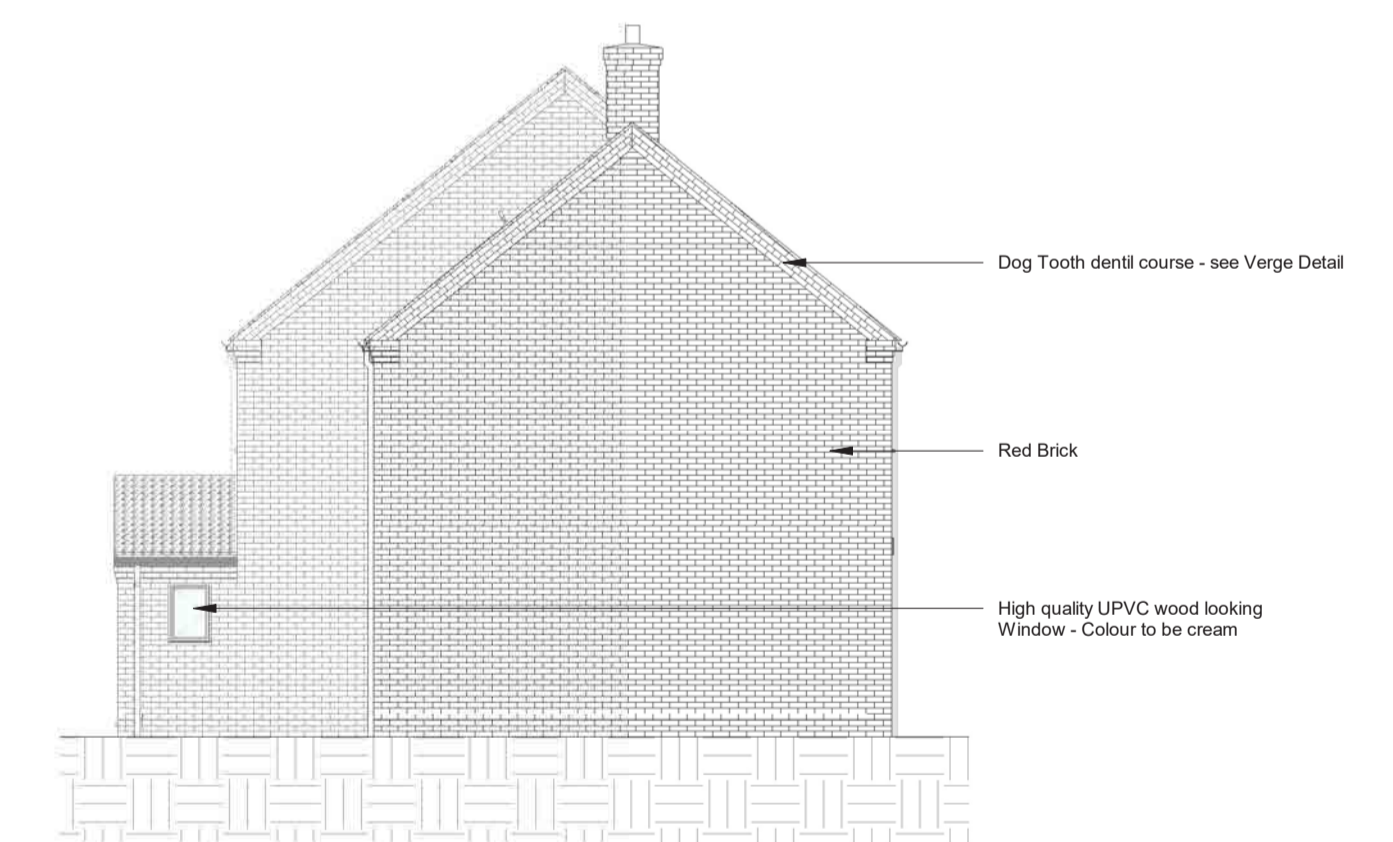
HOUSE 2 - REAR ELEVATION  
scale: 1:100



HOUSE 2 - FIRST FLOOR  
scale: 1:100



HOUSE 2 - LEFT ELEVATION  
scale: 1:100



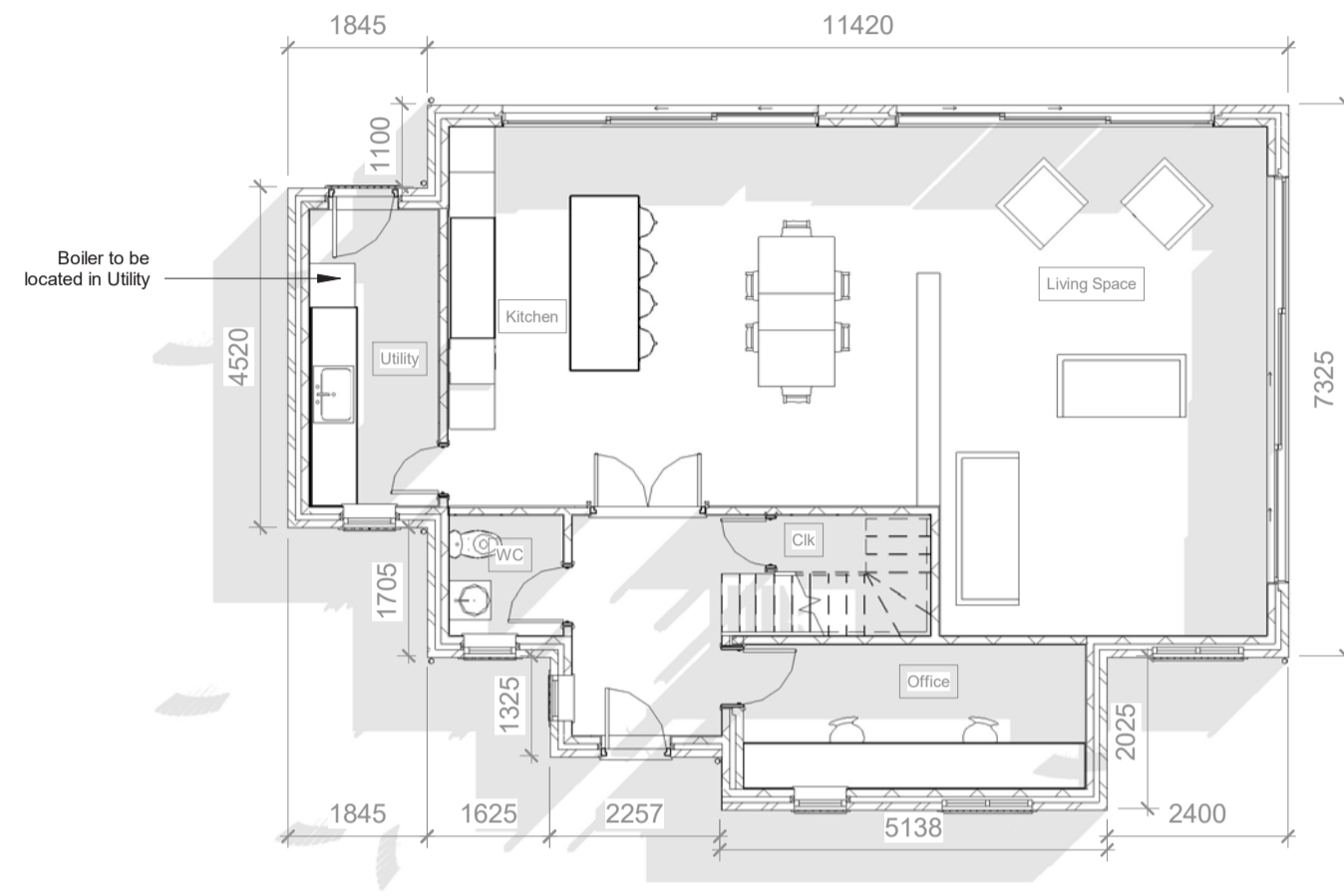
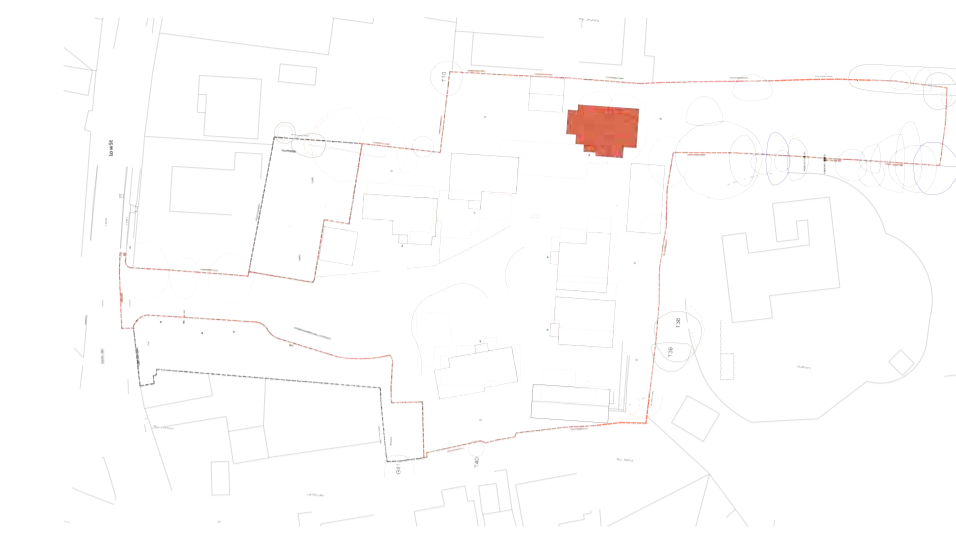
HOUSE 2 - RIGHT ELEVATION  
scale: 1:100



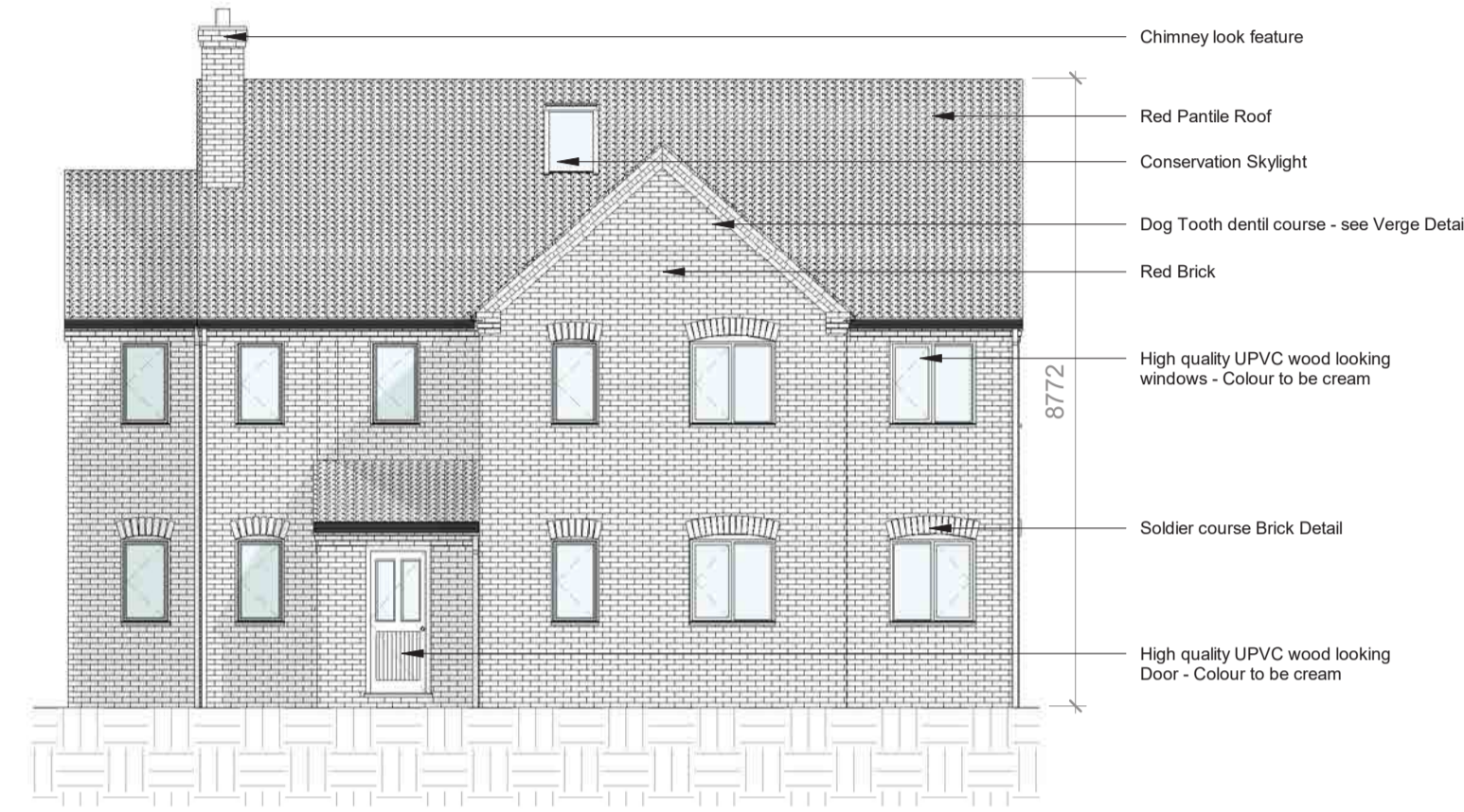
# HOUSE TYPE 03

LAND REAR OF THE BLUE BELL INN, LOW STREET,  
EAST DRAYTON, NOTTINGHAMSHIRE, DN22 0LN

GROUND FLOOR GIA - 92.60M<sup>2</sup> / 996.74FT<sup>2</sup>  
FIRST FLOOR GIA - 89.61M<sup>2</sup> / 964.55FT<sup>2</sup>



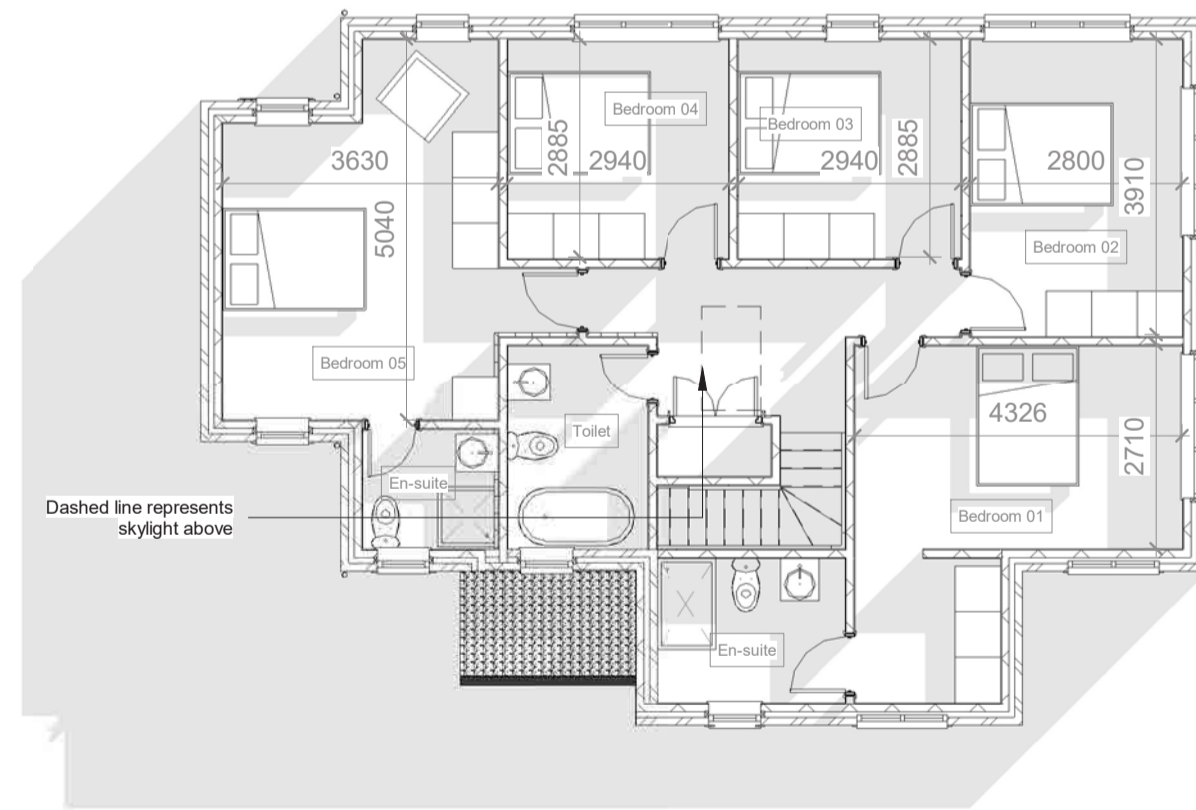
HOUSE 3 - GROUND FLOOR  
scale: 1:100



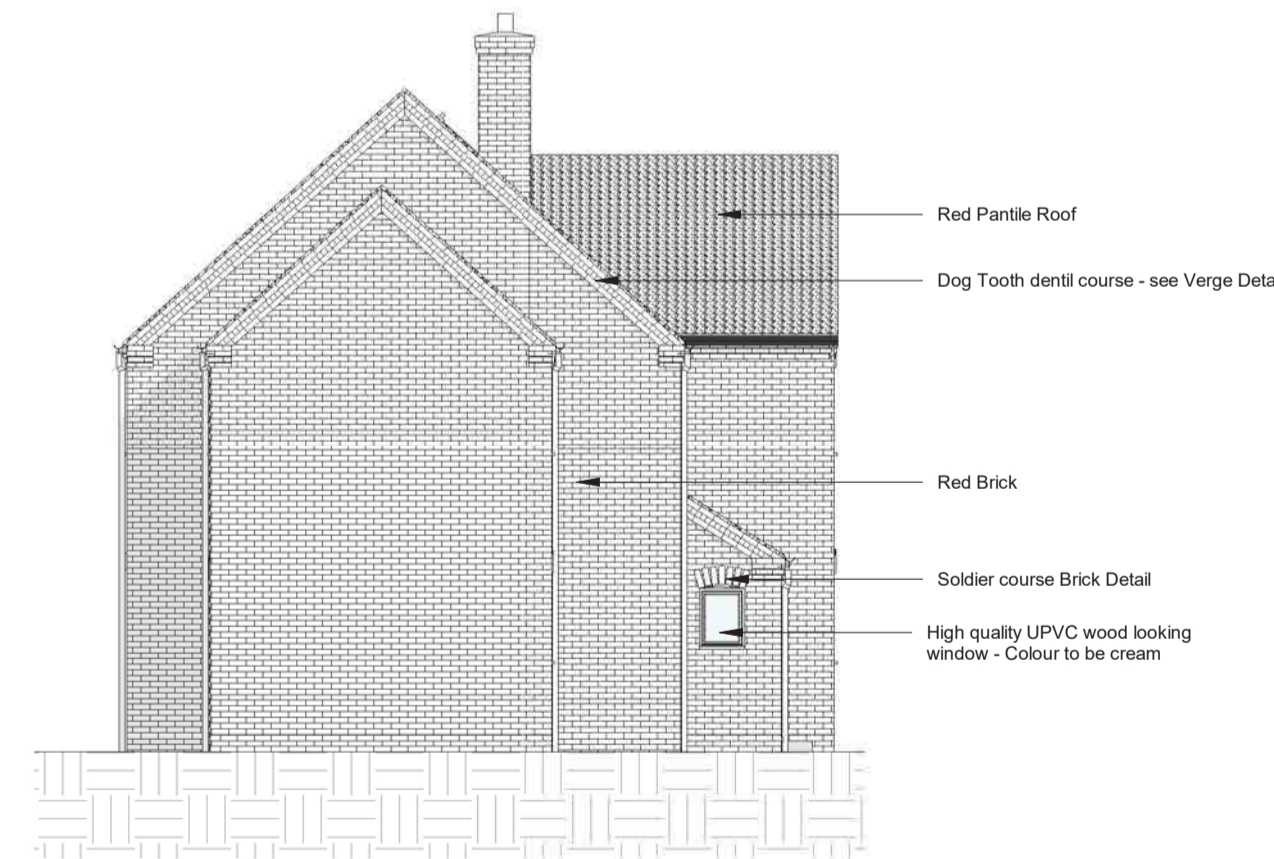
HOUSE 3 - FRONT ELEVATION  
scale: 1:100



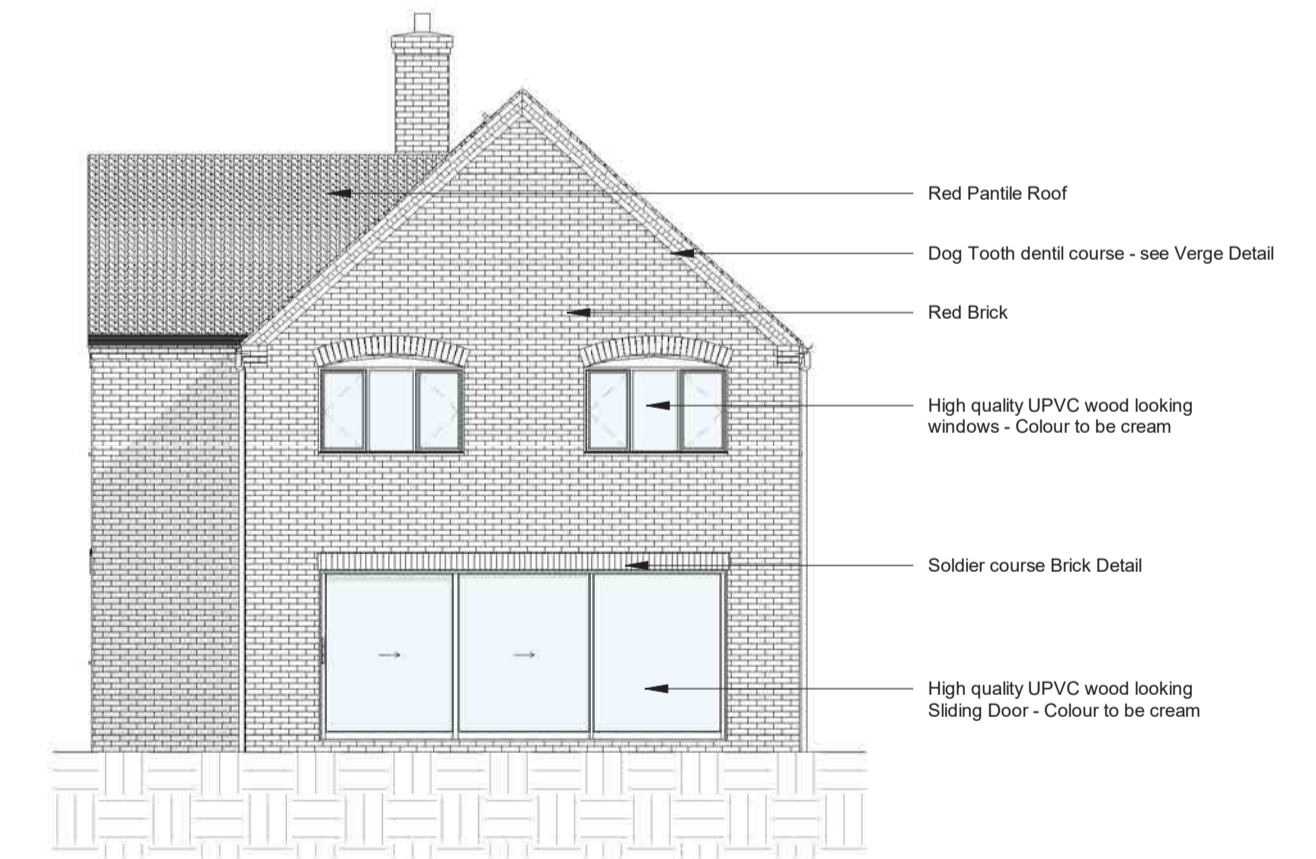
HOUSE 3 - REAR ELEVATION  
scale: 1:100



HOUSE 3 - FIRST FLOOR  
scale: 1:100



HOUSE 3 - LEFT ELEVATION  
scale: 1:100



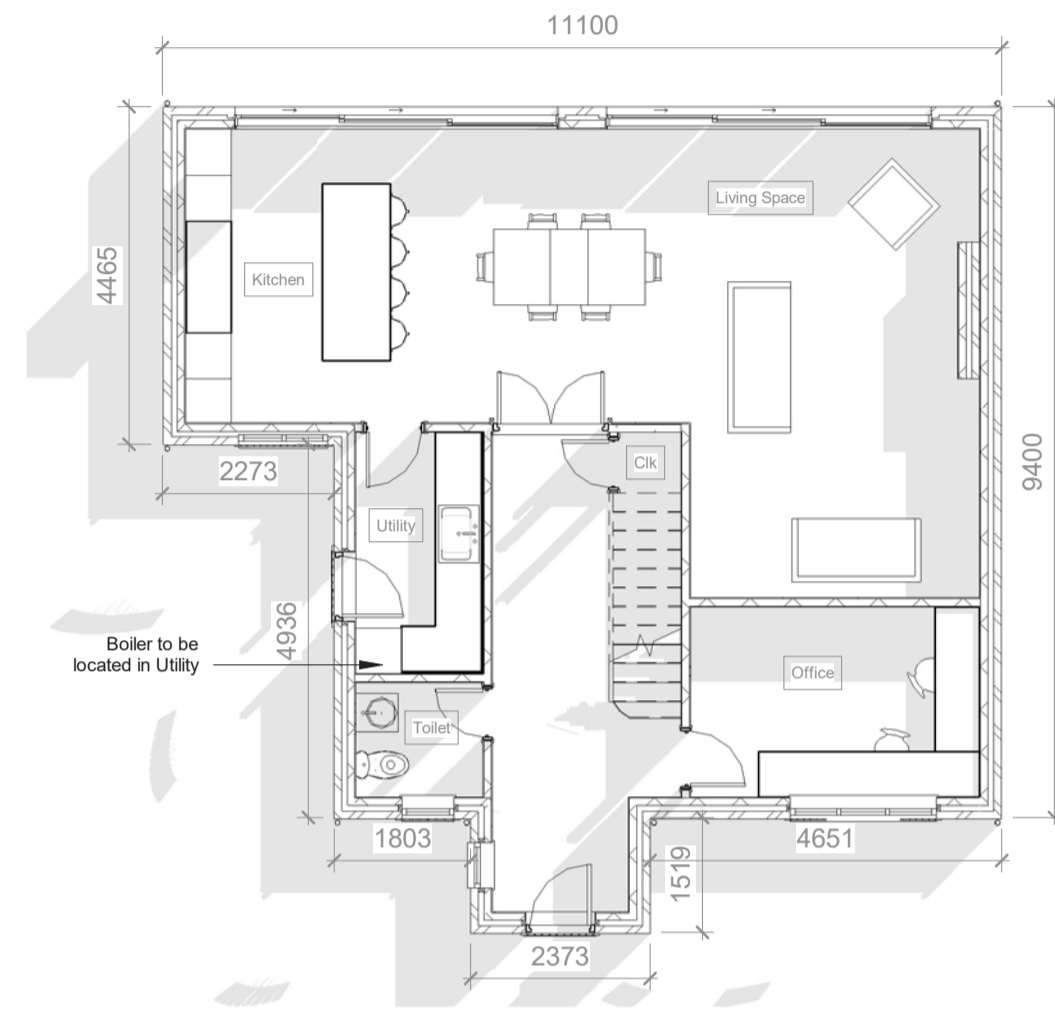
HOUSE 3 - RIGHT ELEVATION  
scale: 1:100



# HOUSE TYPE 04

LAND REAR OF THE BLUE BELL INN, LOW STREET,  
EAST DRAYTON, NOTTINGHAMSHIRE, DN22 0LN

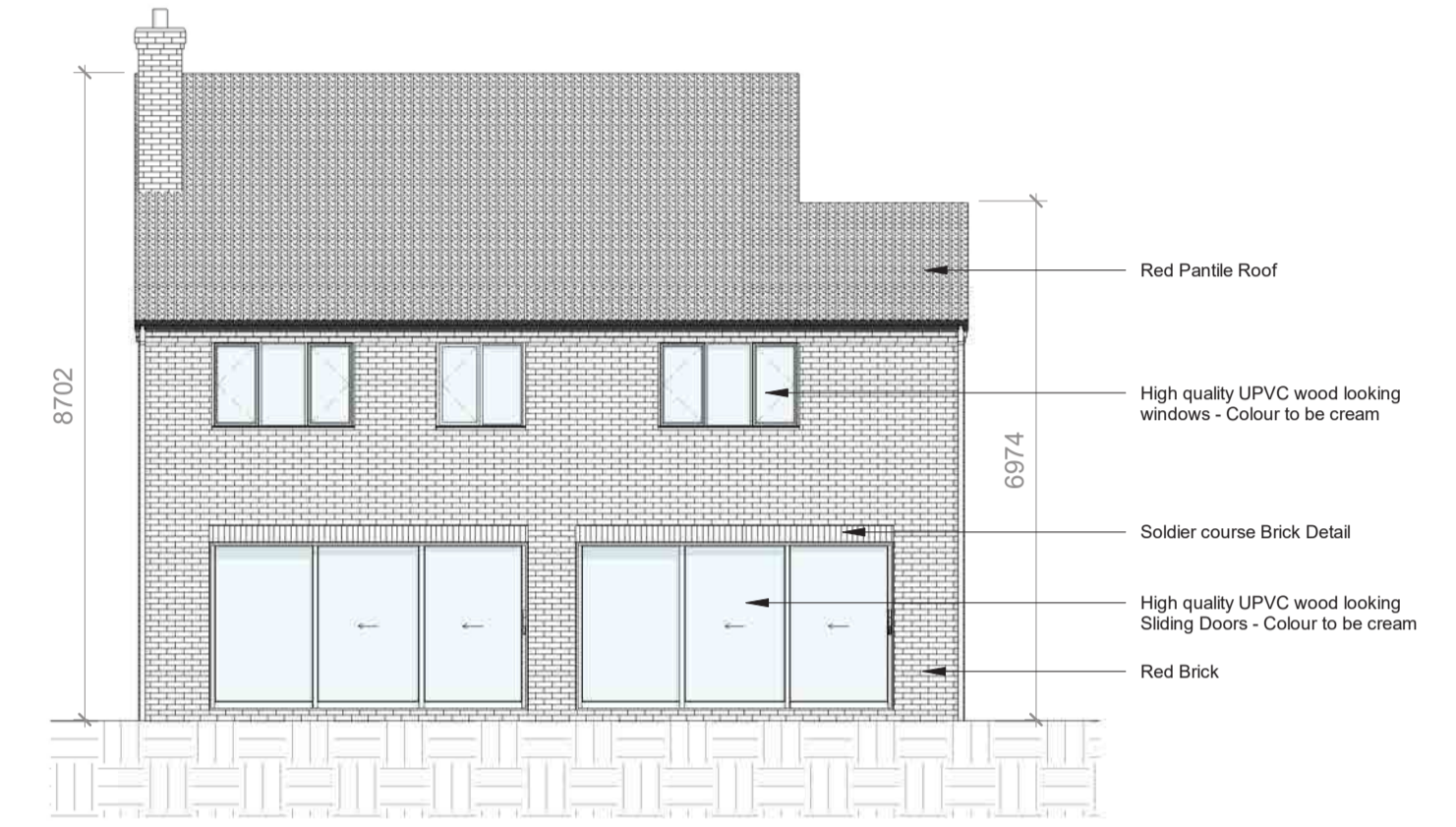
GROUND FLOOR GIA - 84.30M2 / 907.40FT2  
FIRST FLOOR GIA - 81.57M2 / 878.01FT2



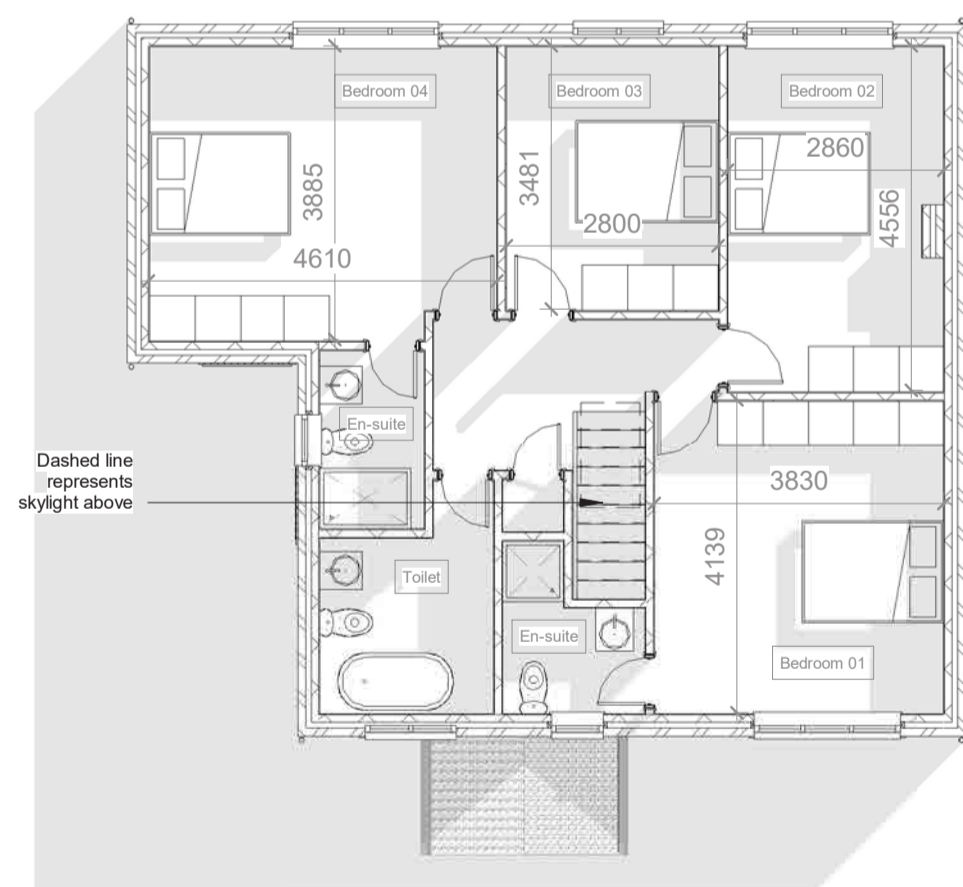
HOUSE 4 - GROUND FLOOR  
scale: 1:100



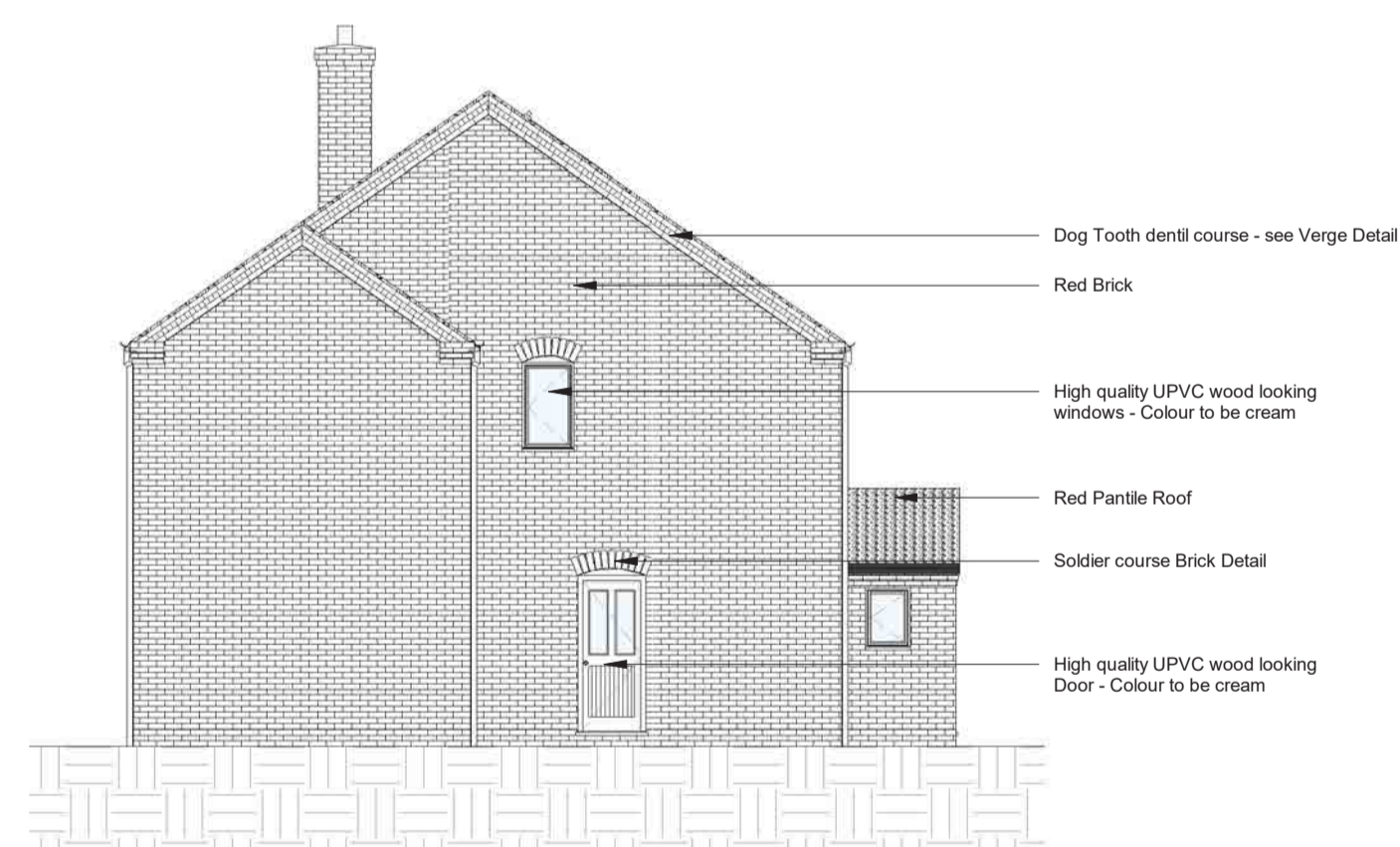
HOUSE 4 - FRONT ELEVATION  
scale: 1:100



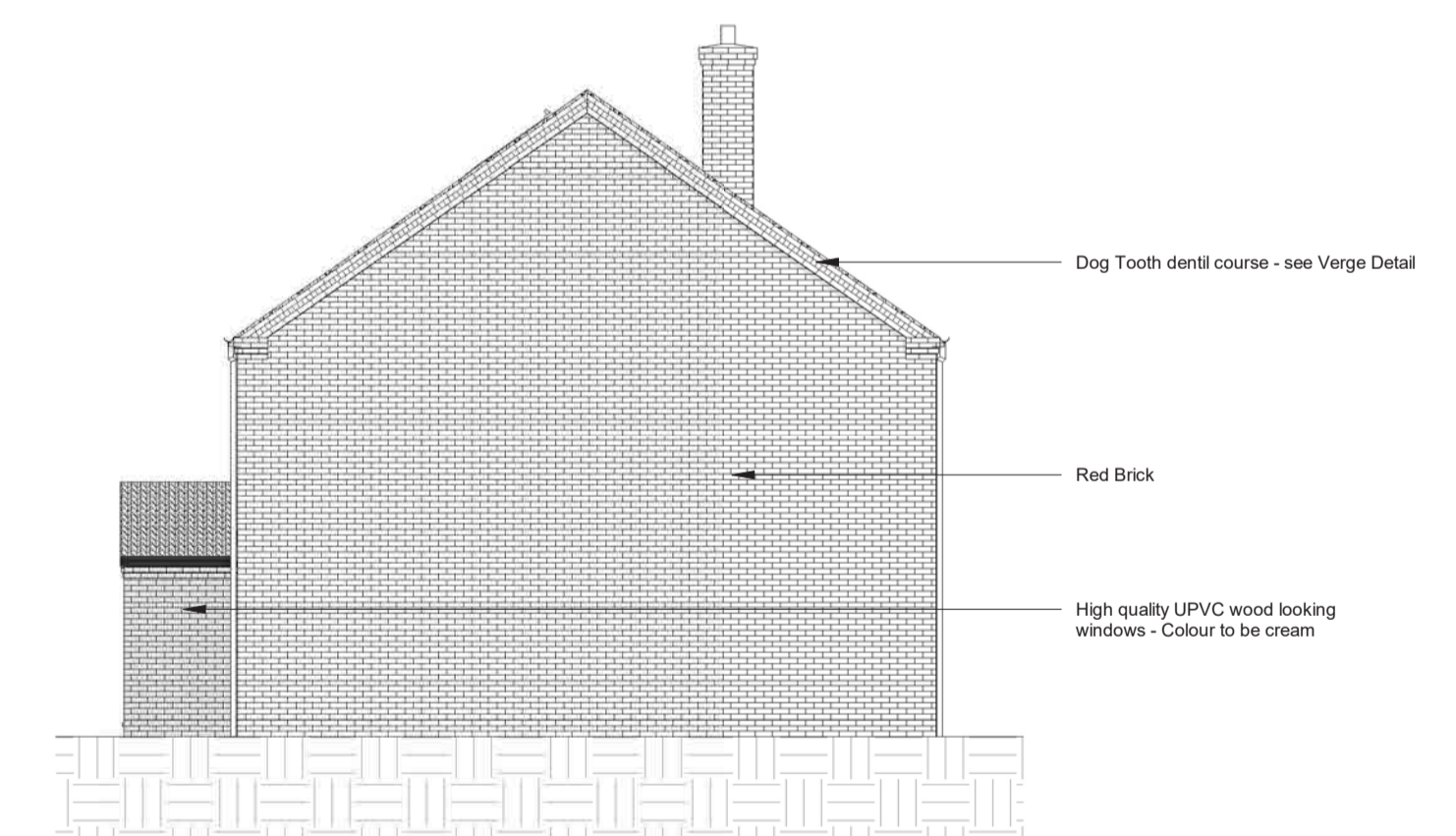
HOUSE 4 - REAR ELEVATION  
scale: 1:100



HOUSE 4 - FIRST FLOOR  
scale: 1:100



HOUSE 4 - LEFT ELEVATION  
scale: 1:100



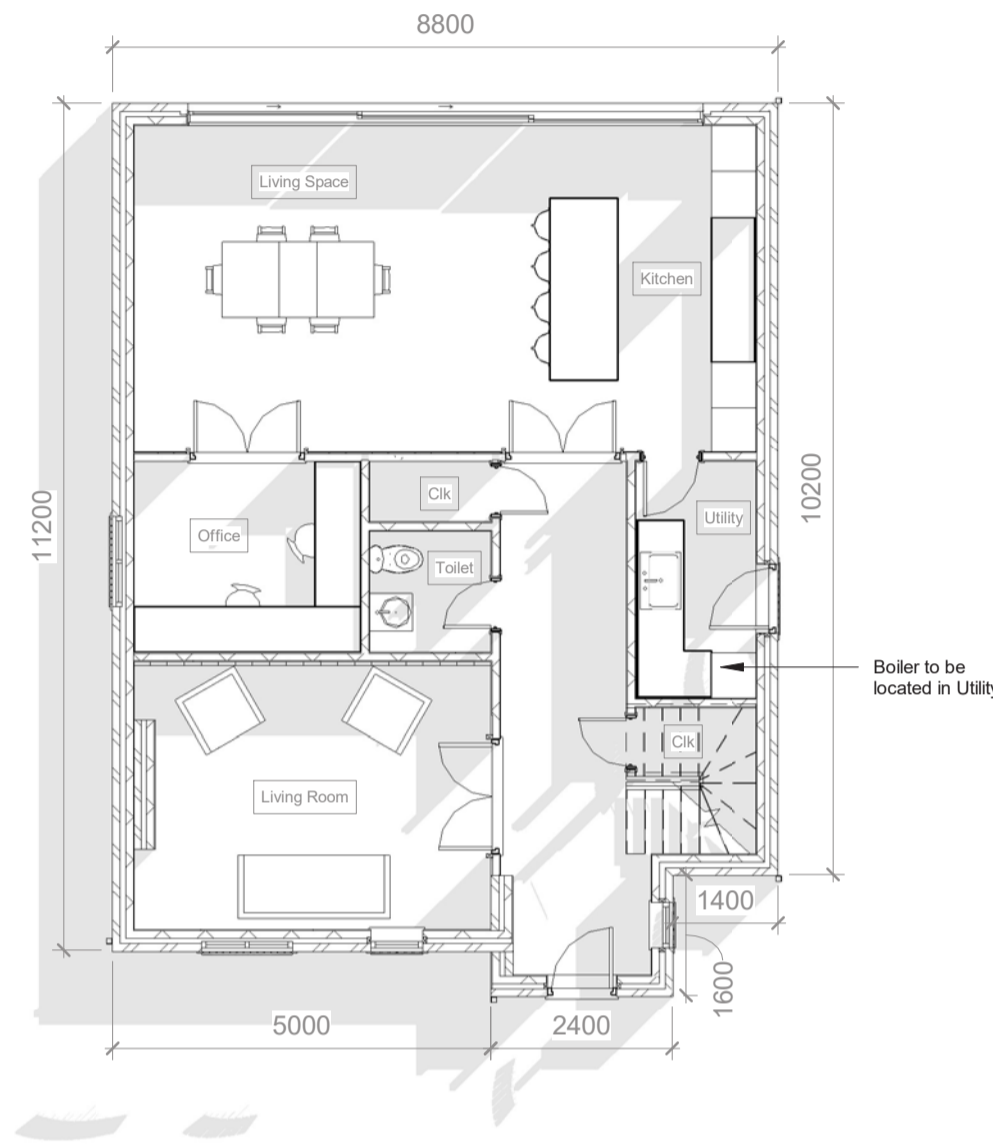
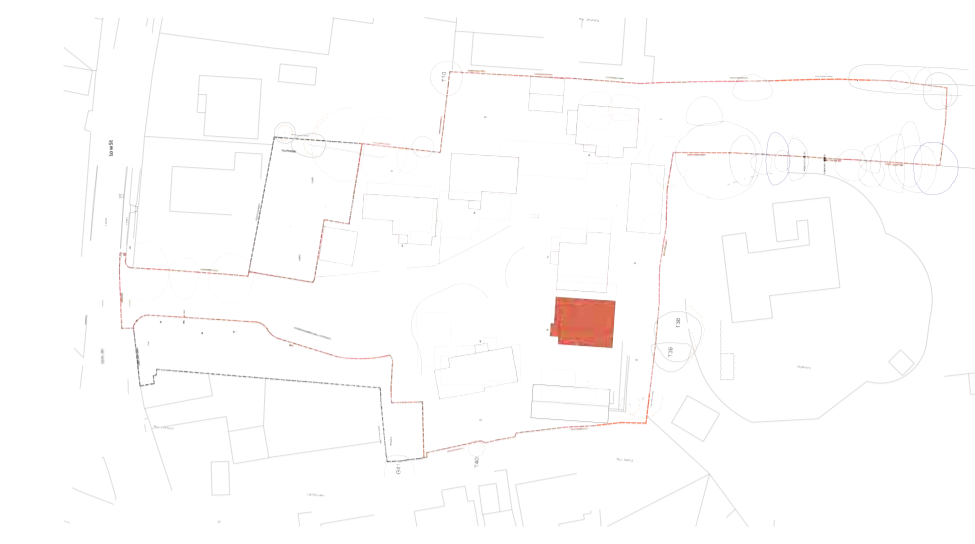
HOUSE 4 - RIGHT ELEVATION  
scale: 1:100



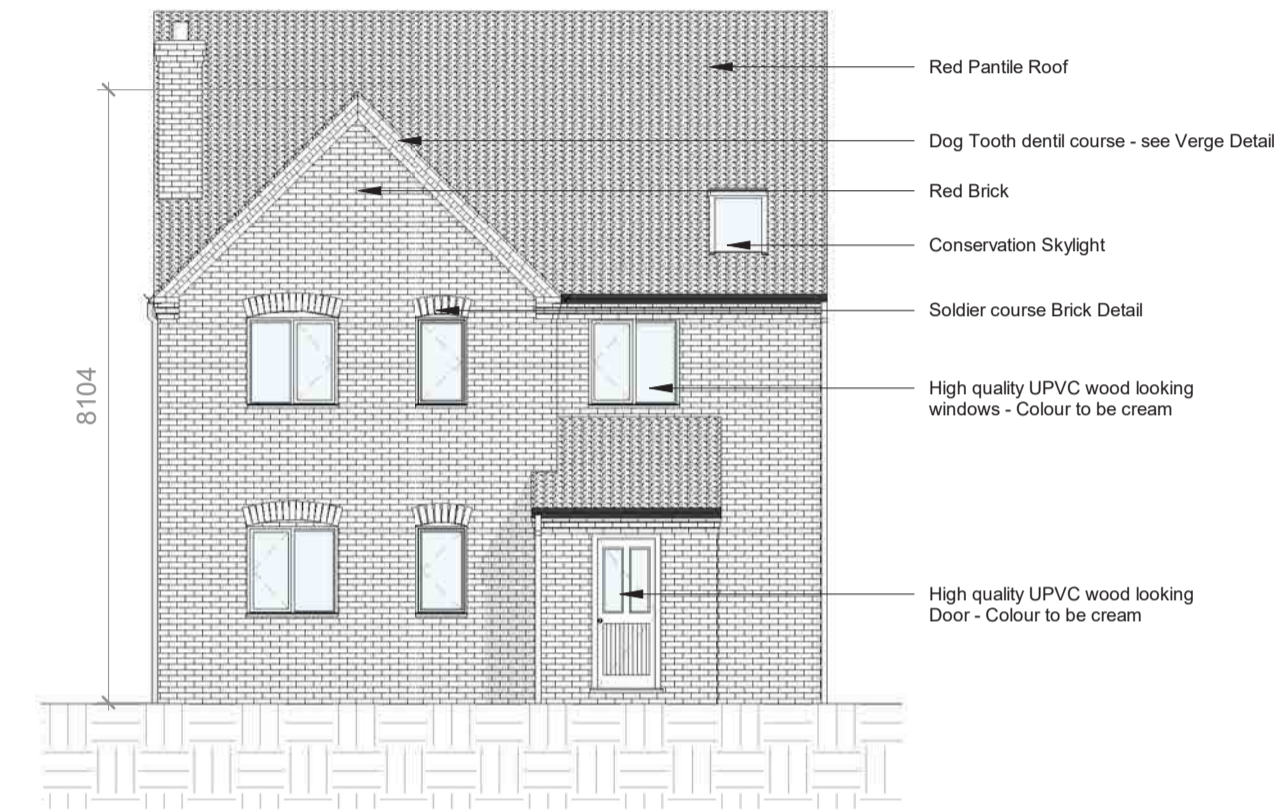
# HOUSE TYPE 05

LAND REAR OF THE BLUE BELL INN, LOW STREET,  
EAST DRAYTON, NOTTINGHAMSHIRE, DN22 0LN

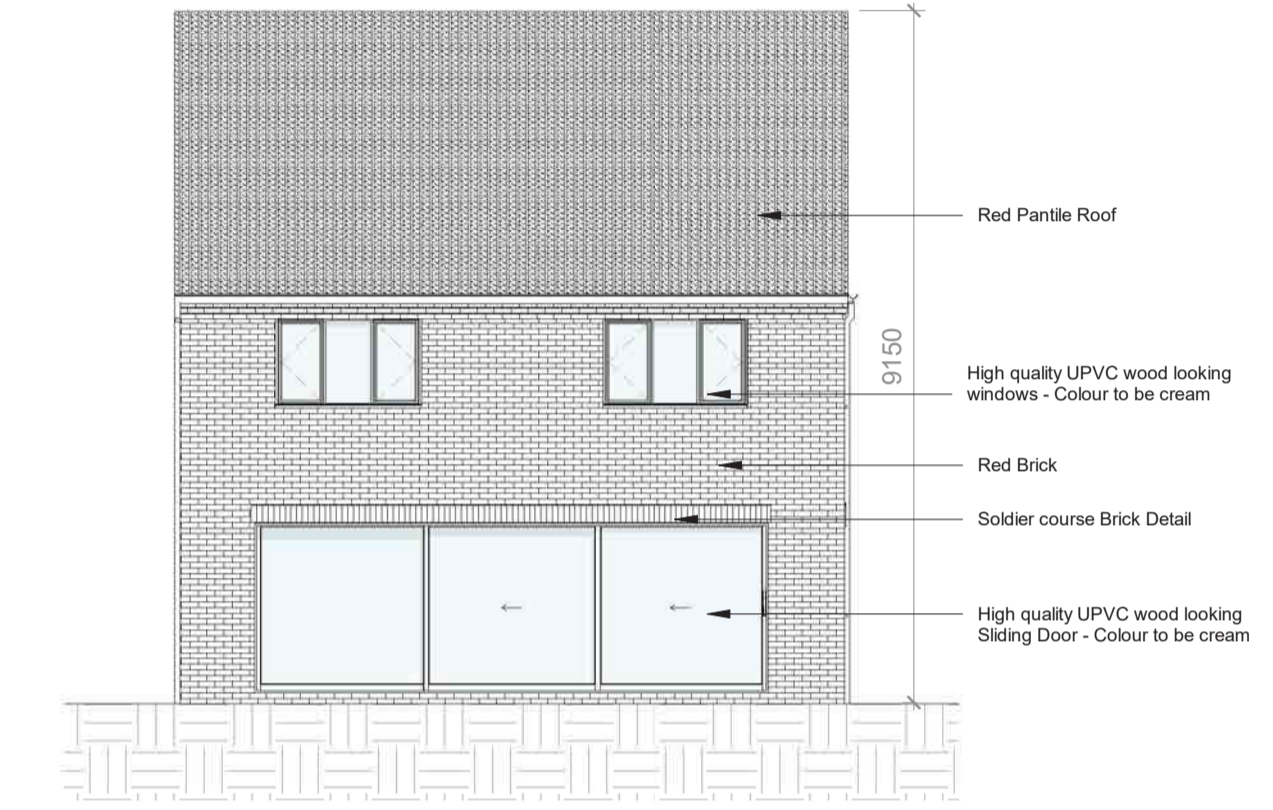
GROUND FLOOR GIA - 87M2 / 936.46FT2  
FIRST FLOOR GIA - 83.79M2 / 901.9FT2



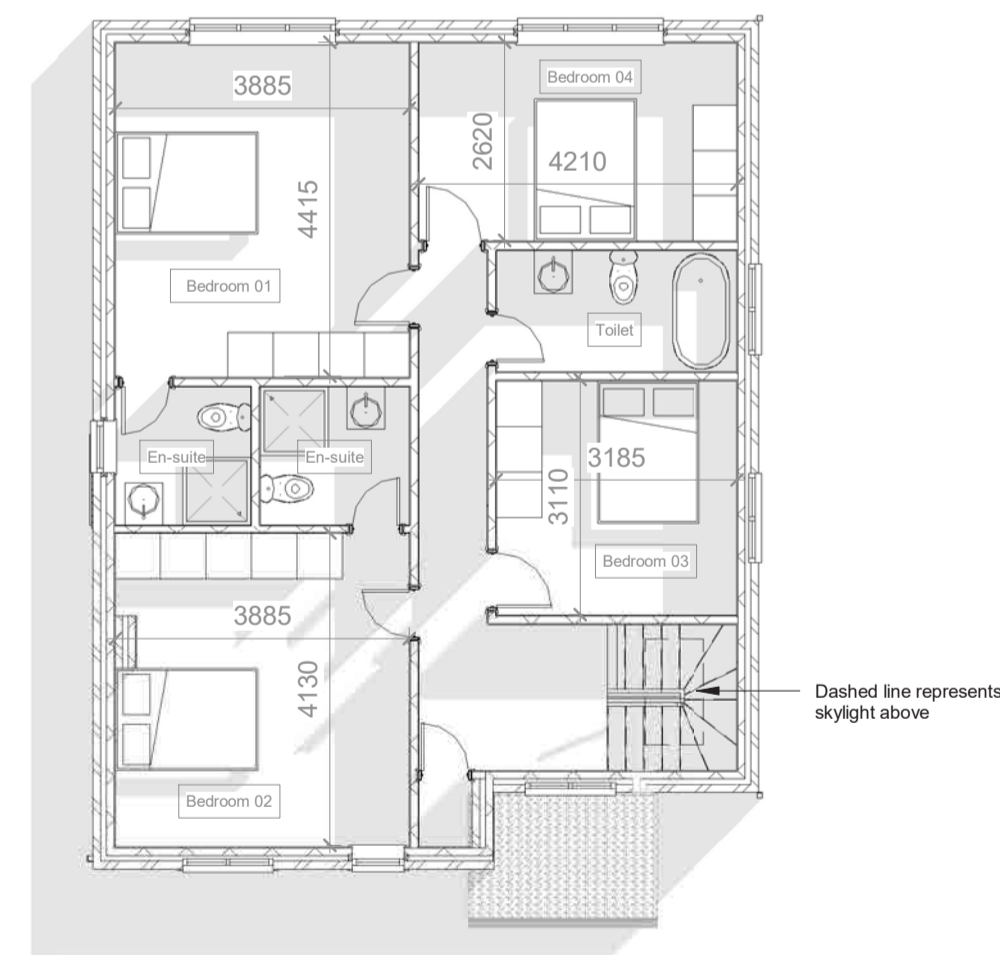
HOUSE 5 - GROUND FLOOR  
esc: 1:100



HOUSE 5 - FRONT ELEVATION  
esc: 1:100



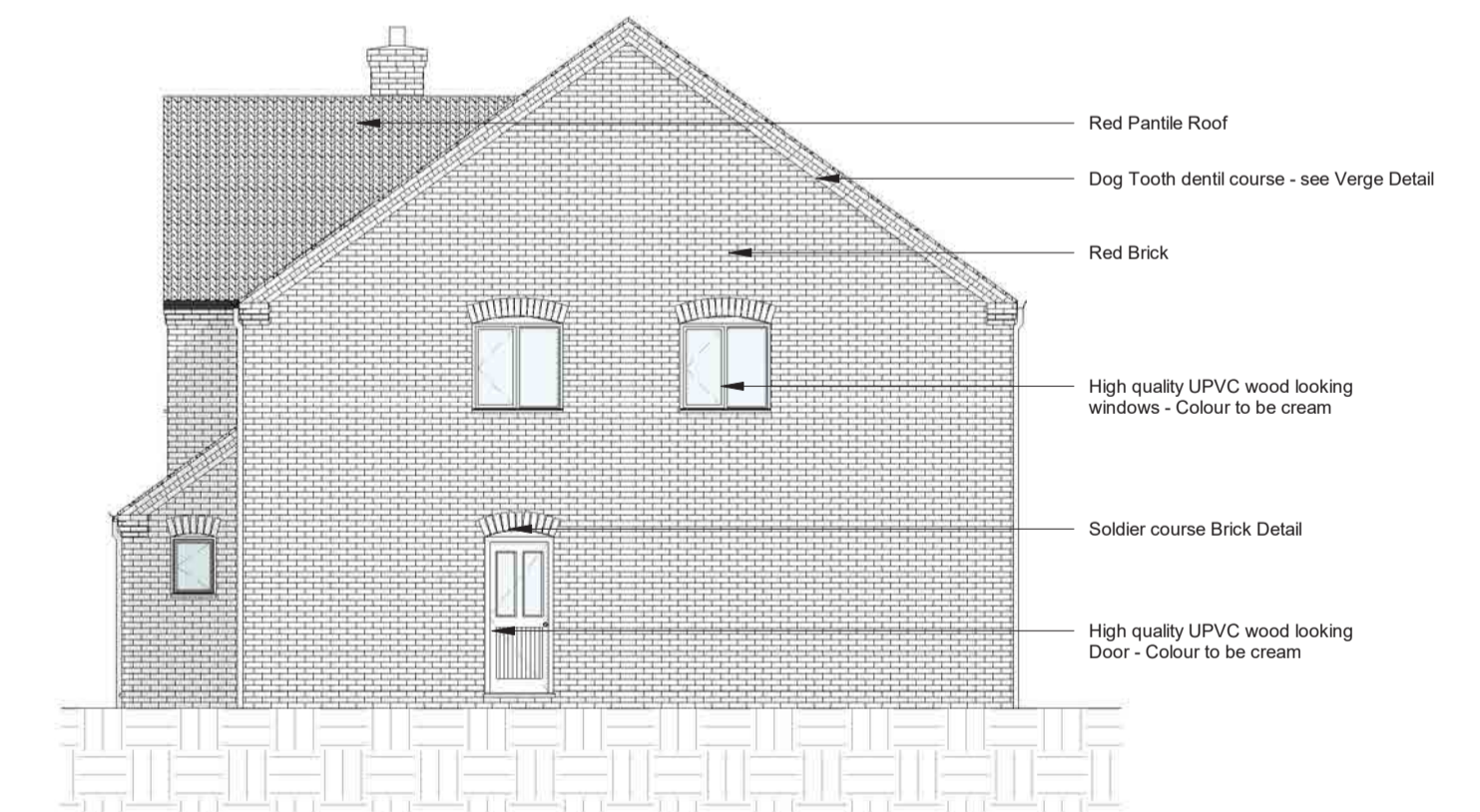
HOUSE 5 - REAR ELEVATION  
esc: 1:100



HOUSE 5 - FIRST FLOOR  
esc: 1:100



HOUSE 5 - LEFT ELEVATION  
esc: 1:100



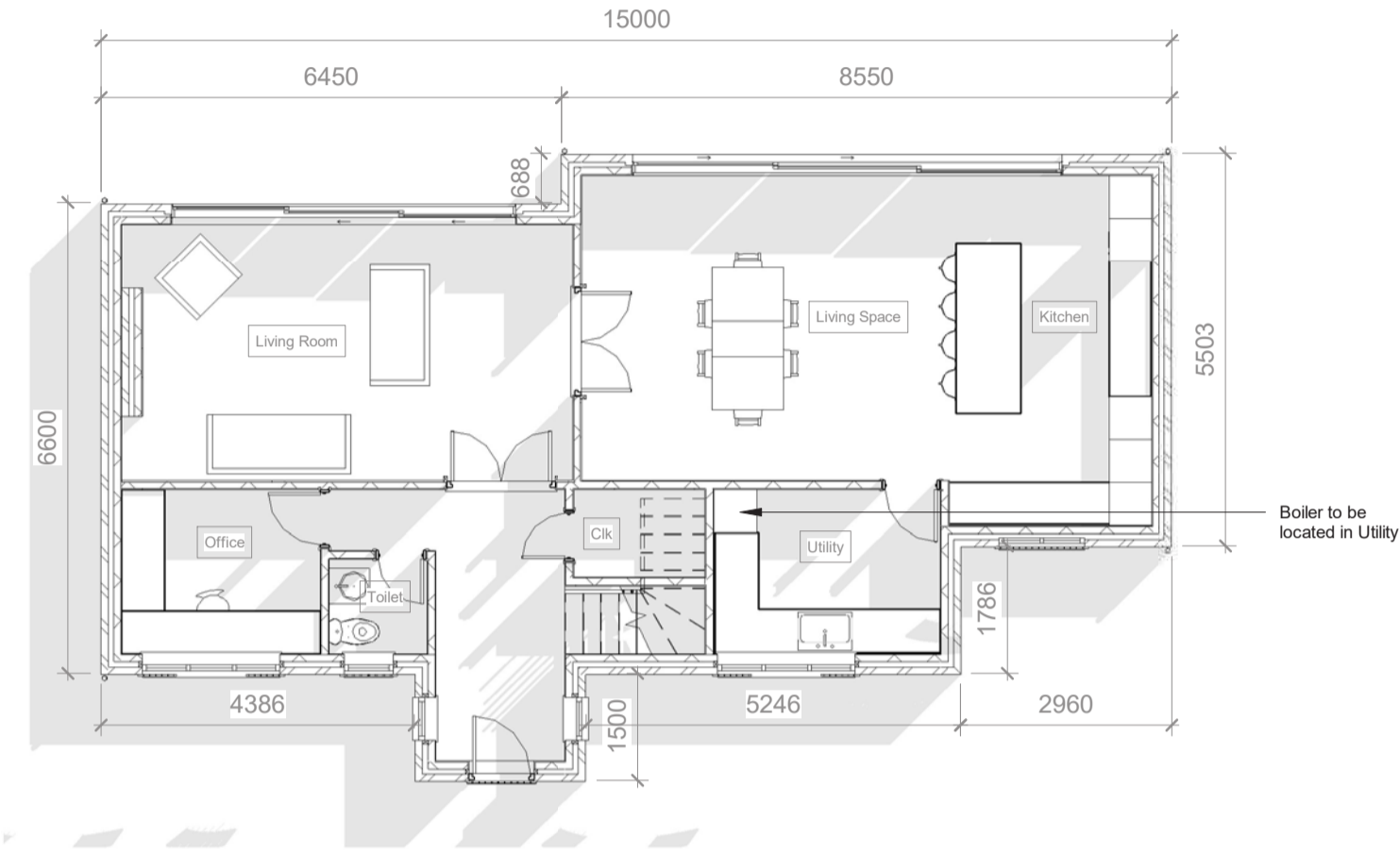
HOUSE 5 - RIGHT ELEVATION  
esc: 1:100



# HOUSE TYPE 06

LAND REAR OF THE BLUE BELL INN, LOW STREET,  
EAST DRAYTON, NOTTINGHAMSHIRE, DN22 0LN

GROUND FLOOR GIA - 89.75M2 / 966.06FT2  
FIRST FLOOR GIA - 87M2 / 936.46FT2



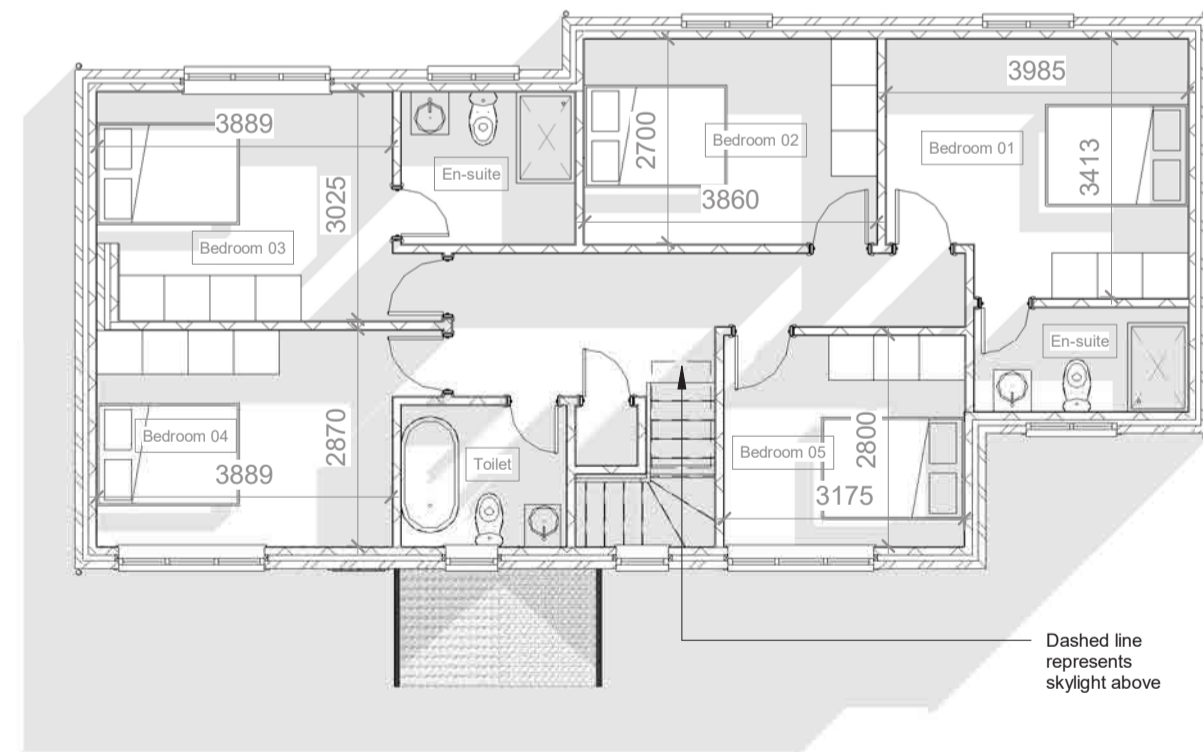
HOUSE 6 - GROUND FLOOR  
esc: 1:100



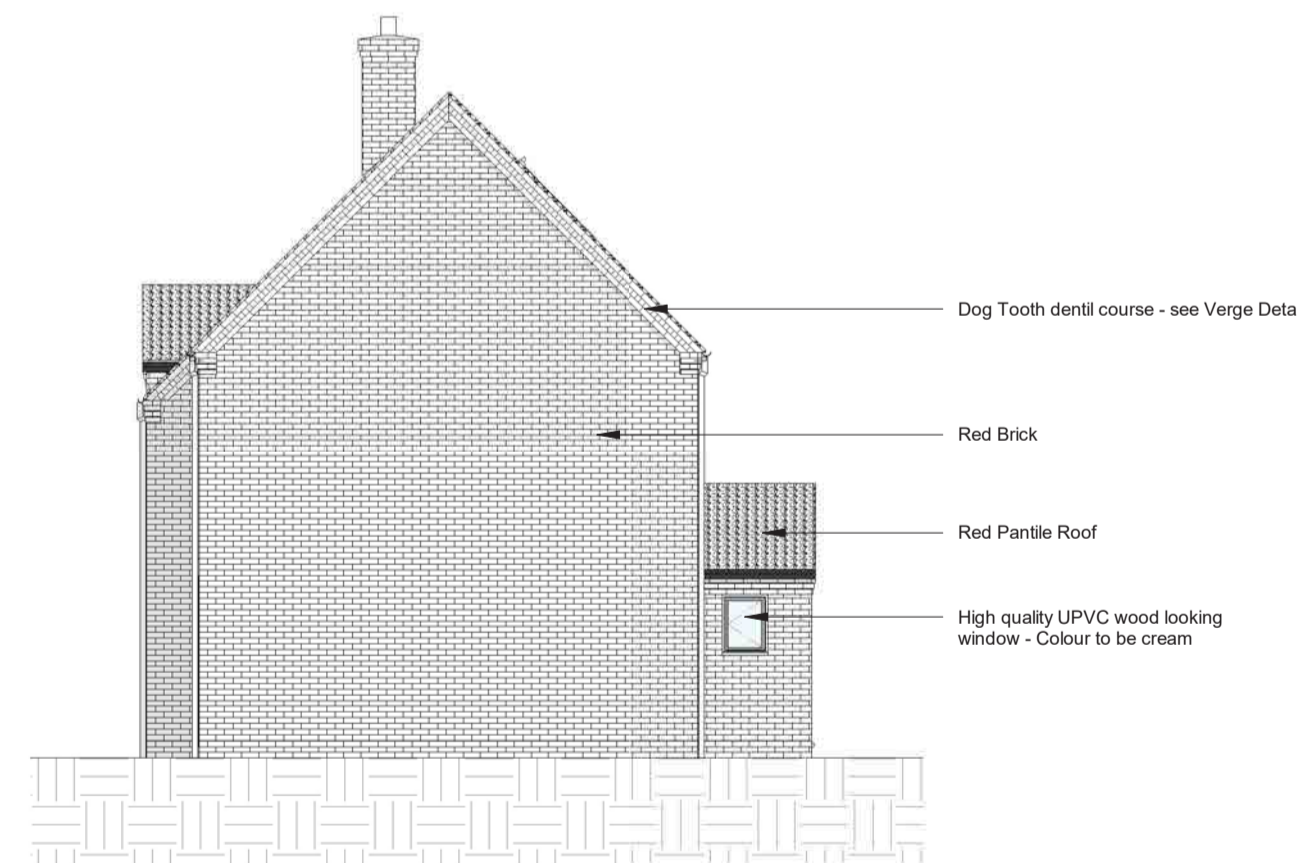
HOUSE 6 - FRONT ELEVATION  
esc: 1:100



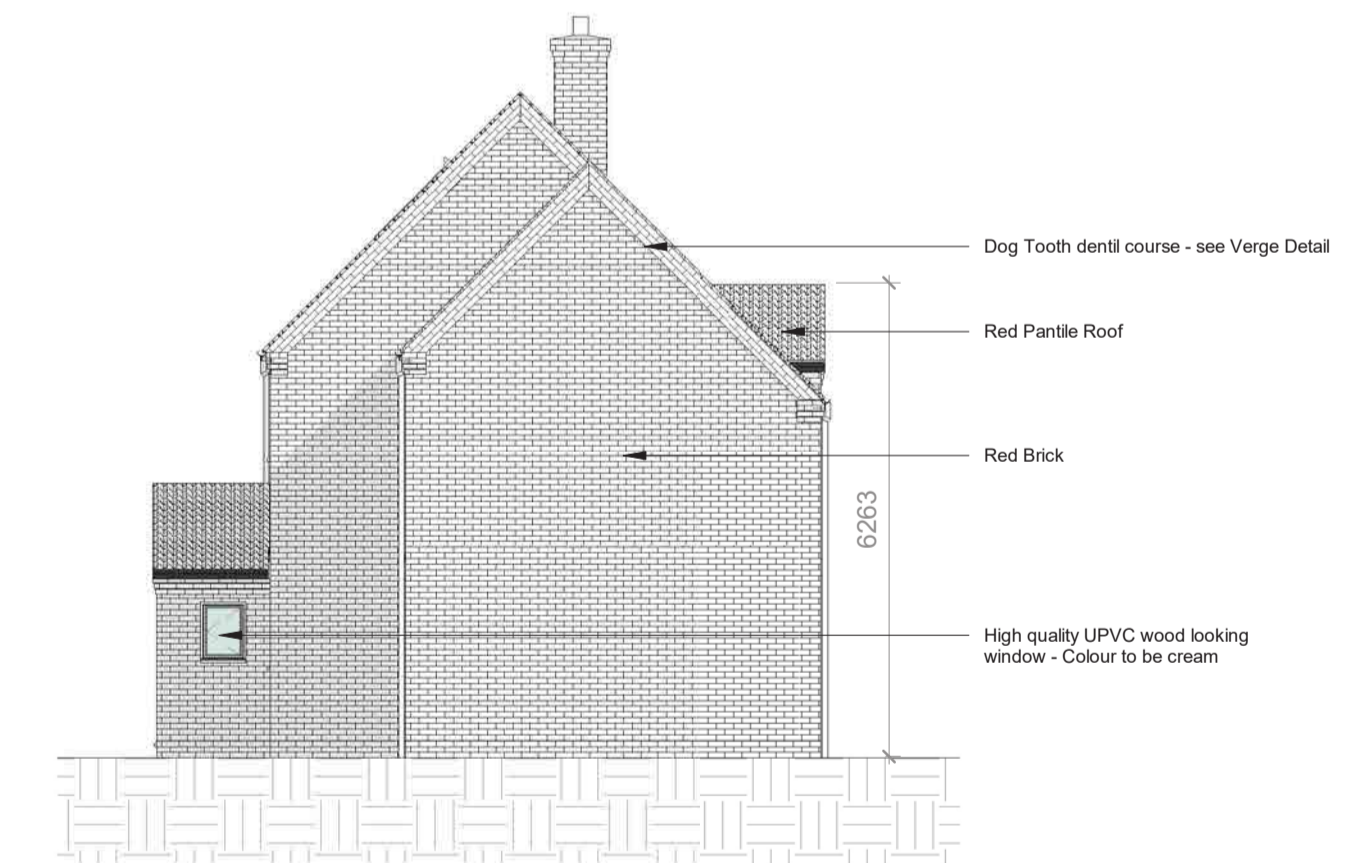
HOUSE 6 - REAR ELEVATION  
esc: 1:100



HOUSE 6 - FIRST FLOOR  
esc: 1:100



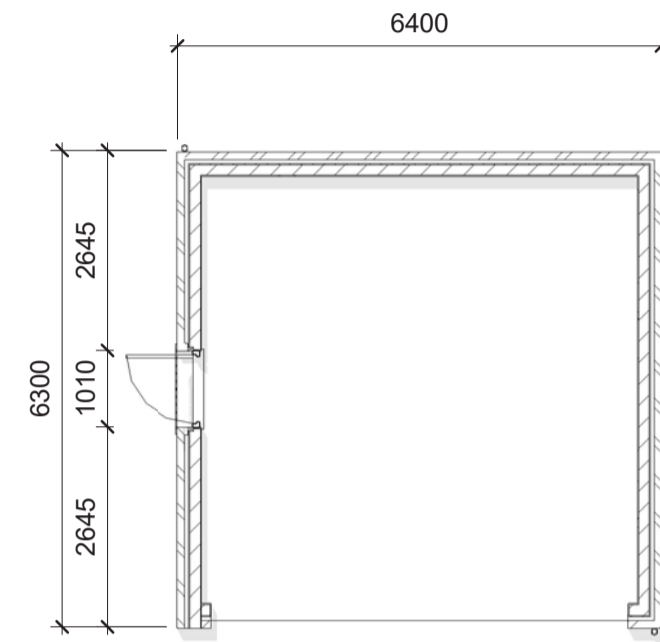
HOUSE 6 - LEFT ELEVATION  
esc: 1:100



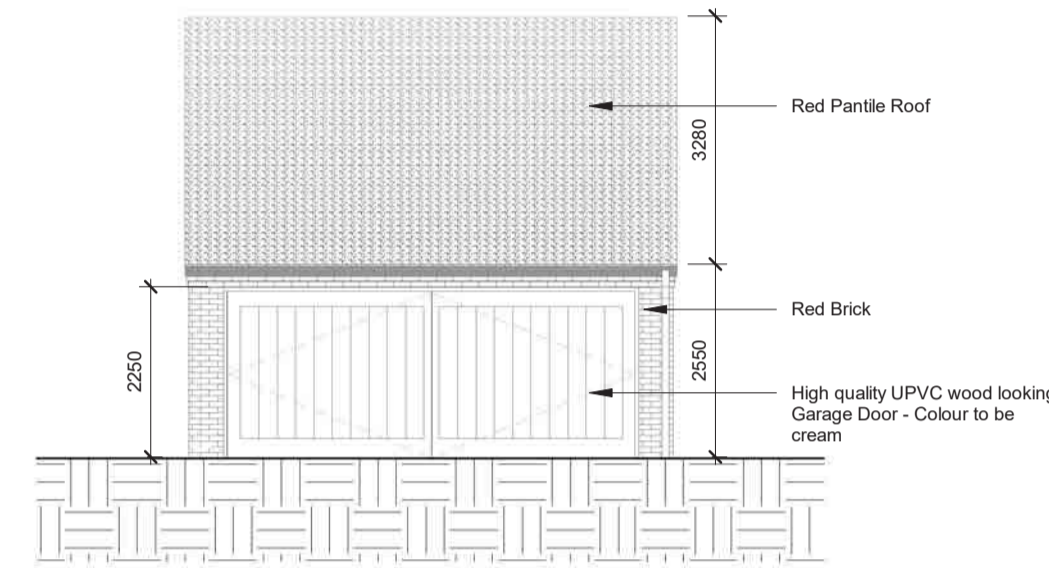
HOUSE 6 - RIGHT ELEVATION  
esc: 1:100

# DOUBLE GARAGE TYPE 1A

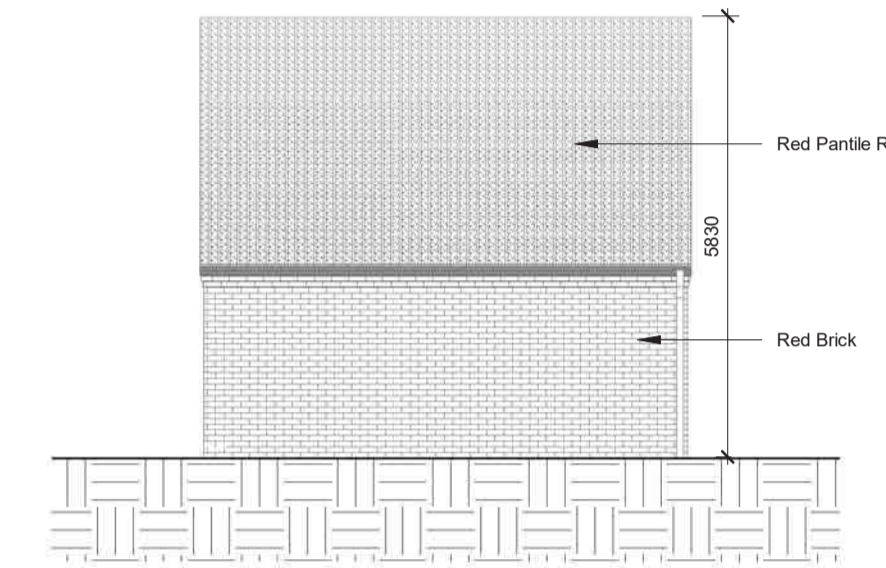
LAND REAR OF THE BLUE BELL INN, LOW STREET,  
EAST DRAYTON, NOTTINGHAMSHIRE, DN22 0LN



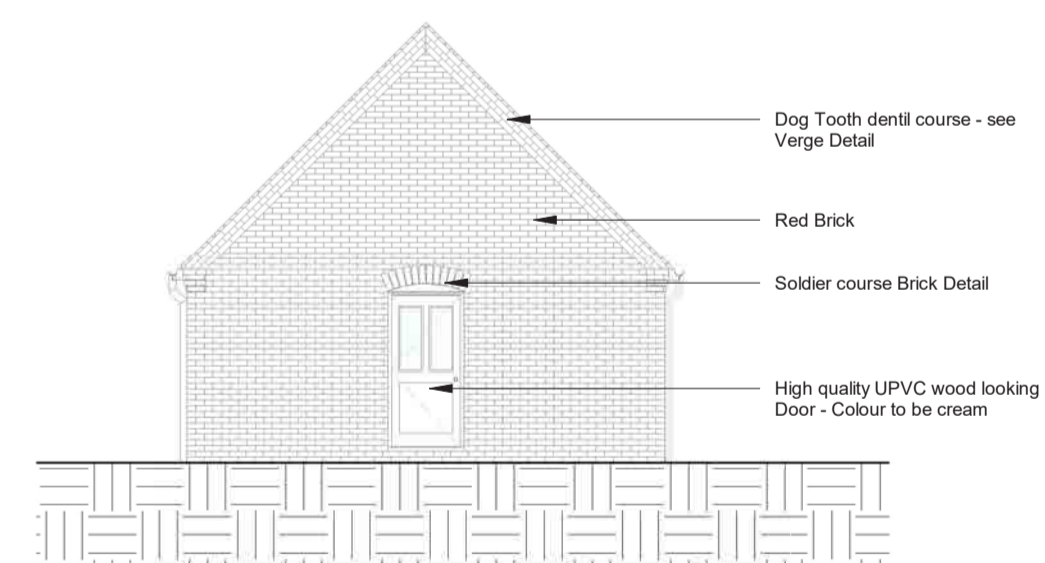
GARAGE TYPE 1A - GROUND FLOOR  
scale: 1:100



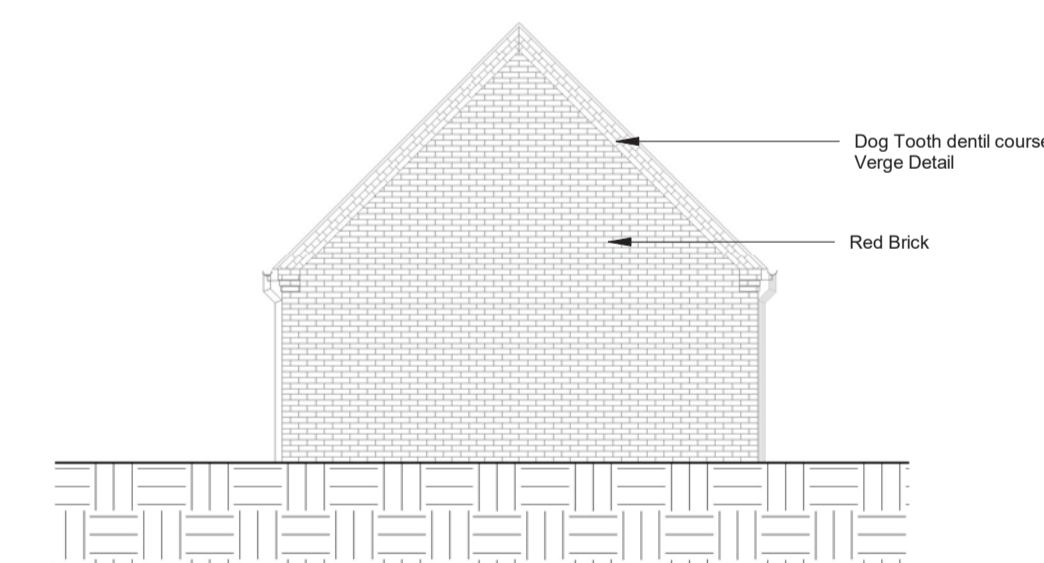
GARAGE TYPE 1A - FRONT ELEVATION  
scale: 1:100



GARAGE TYPE 1A - REAR ELEVATION  
scale: 1:100



GARAGE TYPE 1A - LEFT ELEVATION  
scale: 1:100

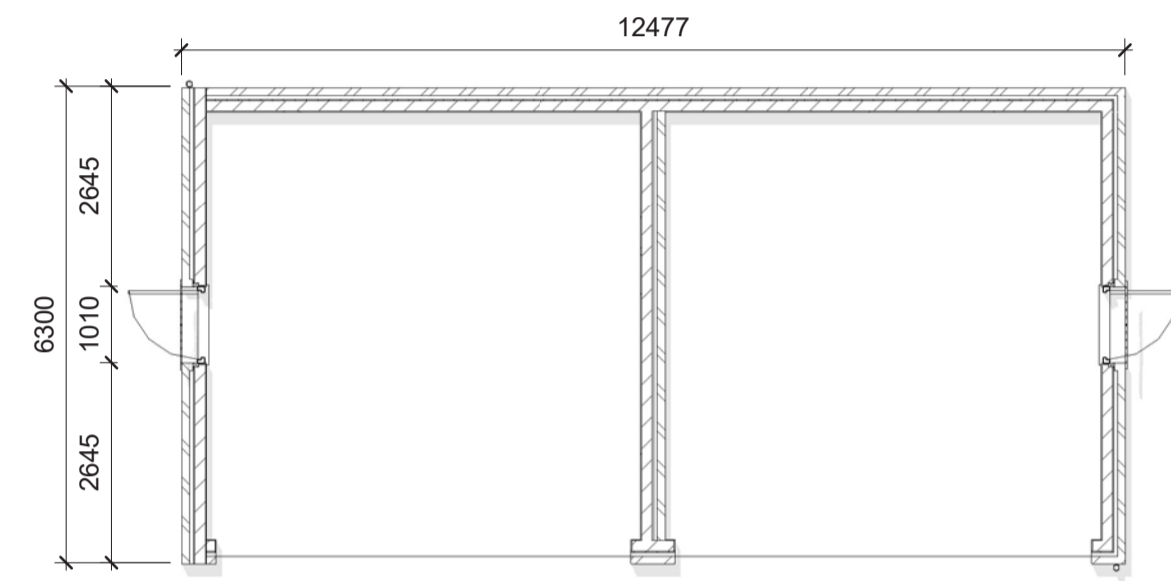
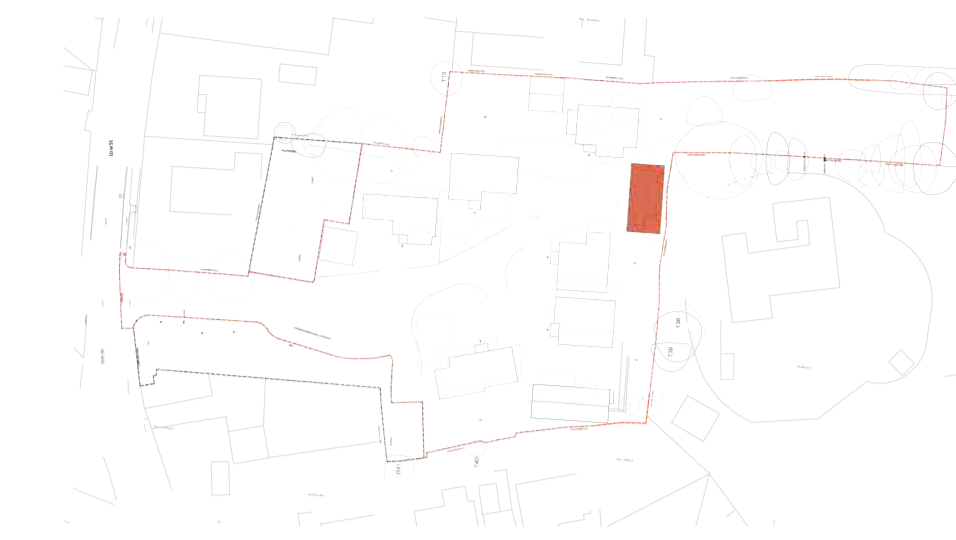


GARAGE TYPE 1A - RIGHT ELEVATION  
scale: 1:100

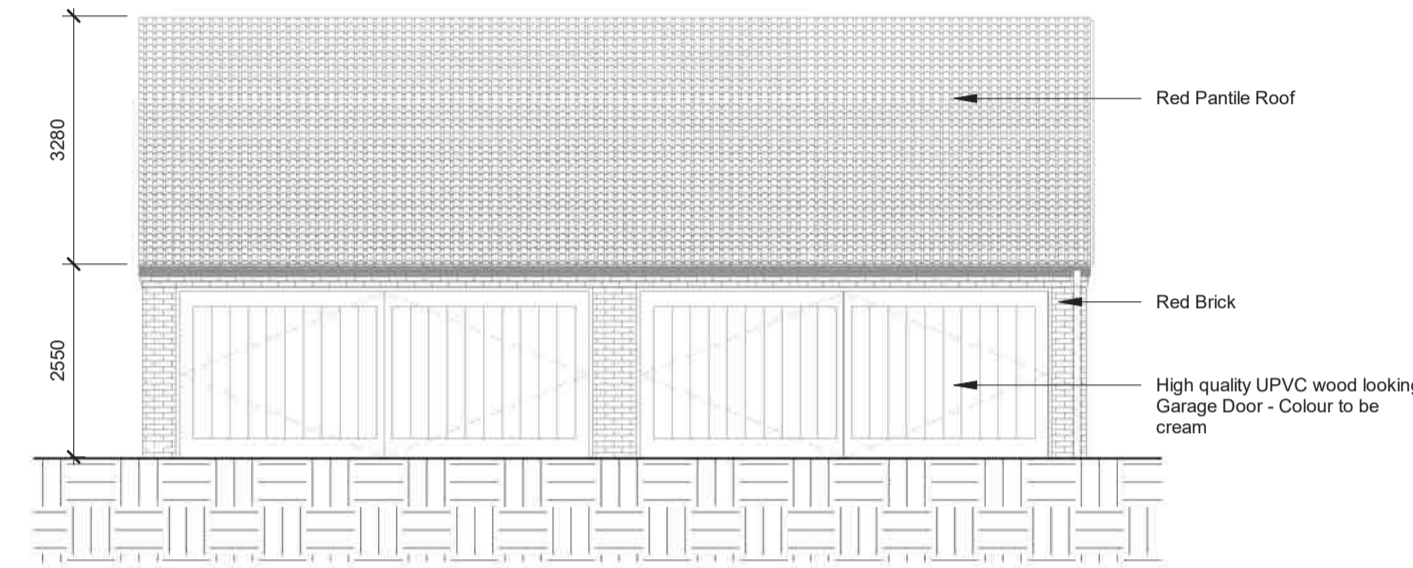
NOTE - DOUBLE GARAGE TYPE 1B TO BE THE  
SAME AS TYPE 1A OMITTING SIDE DOOR.

# DOUBLE GARAGE TYPE 2

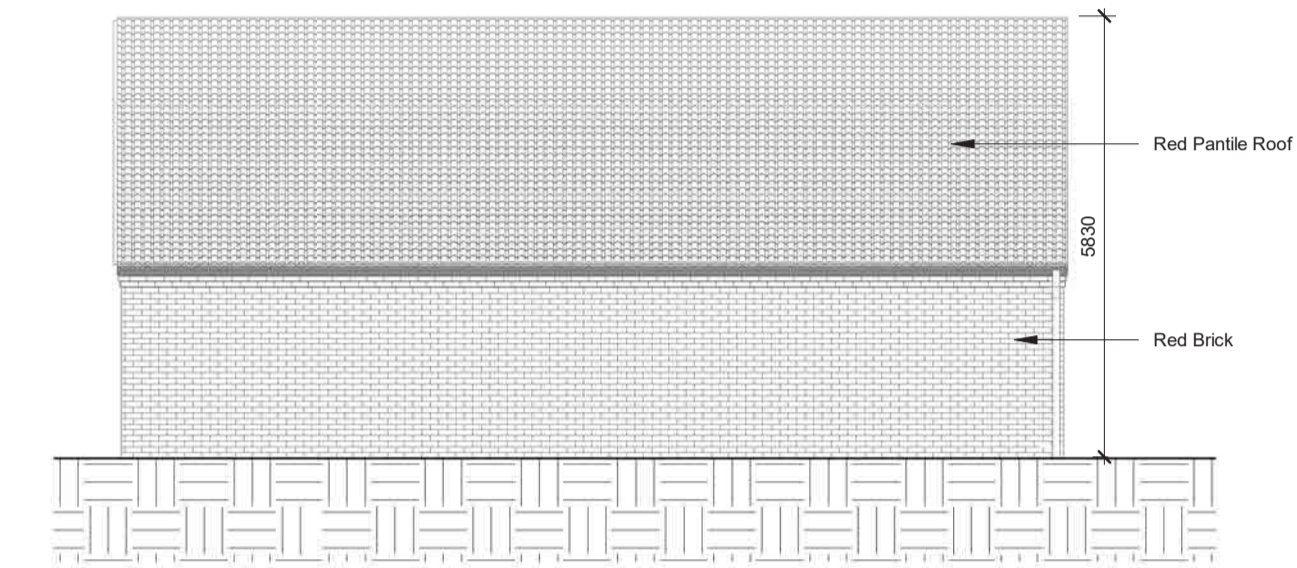
LAND REAR OF THE BLUE BELL INN, LOW STREET,  
EAST DRAYTON, NOTTINGHAMSHIRE, DN22 0LN



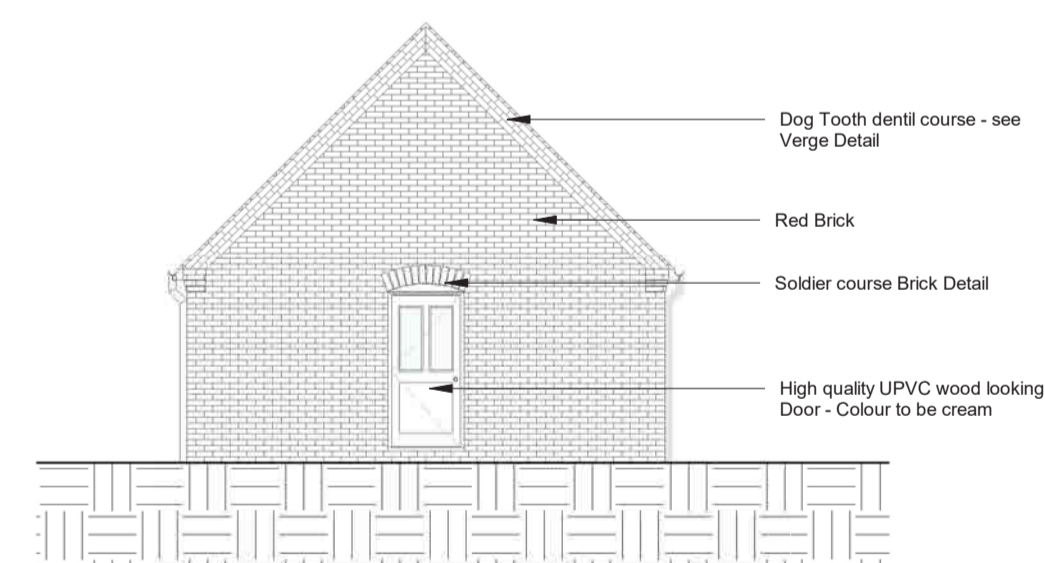
GARAGE TYPE 2 - GROUND FLOOR  
scale: 1:100



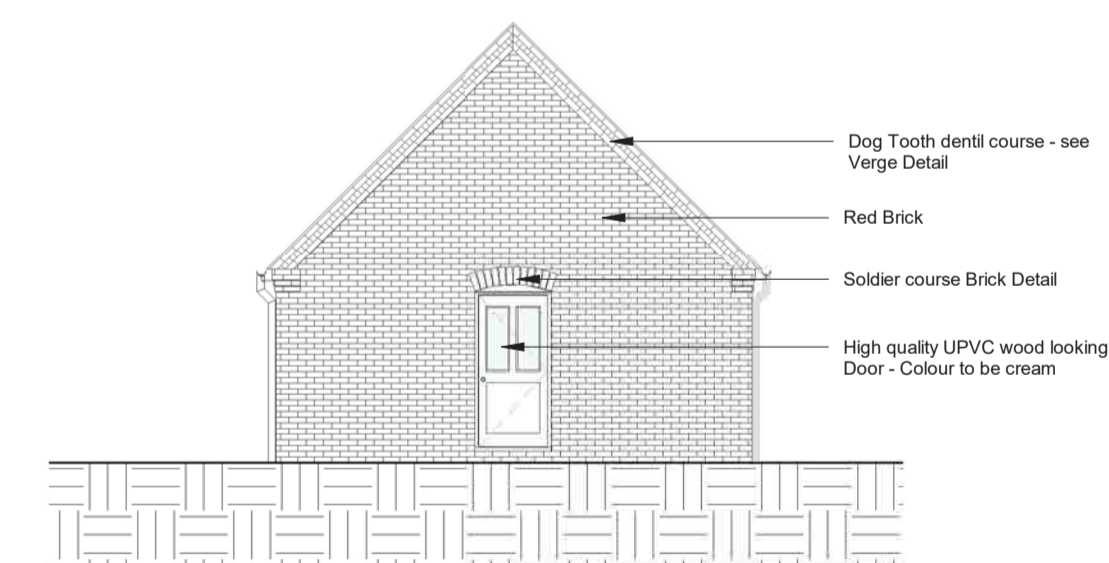
GARAGE TYPE 2 - FRONT ELEVATION  
scale: 1:100



GARAGE TYPE 2 - REAR ELEVATION  
scale: 1:100



GARAGE TYPE 2 - LEFT ELEVATION  
scale: 1:100

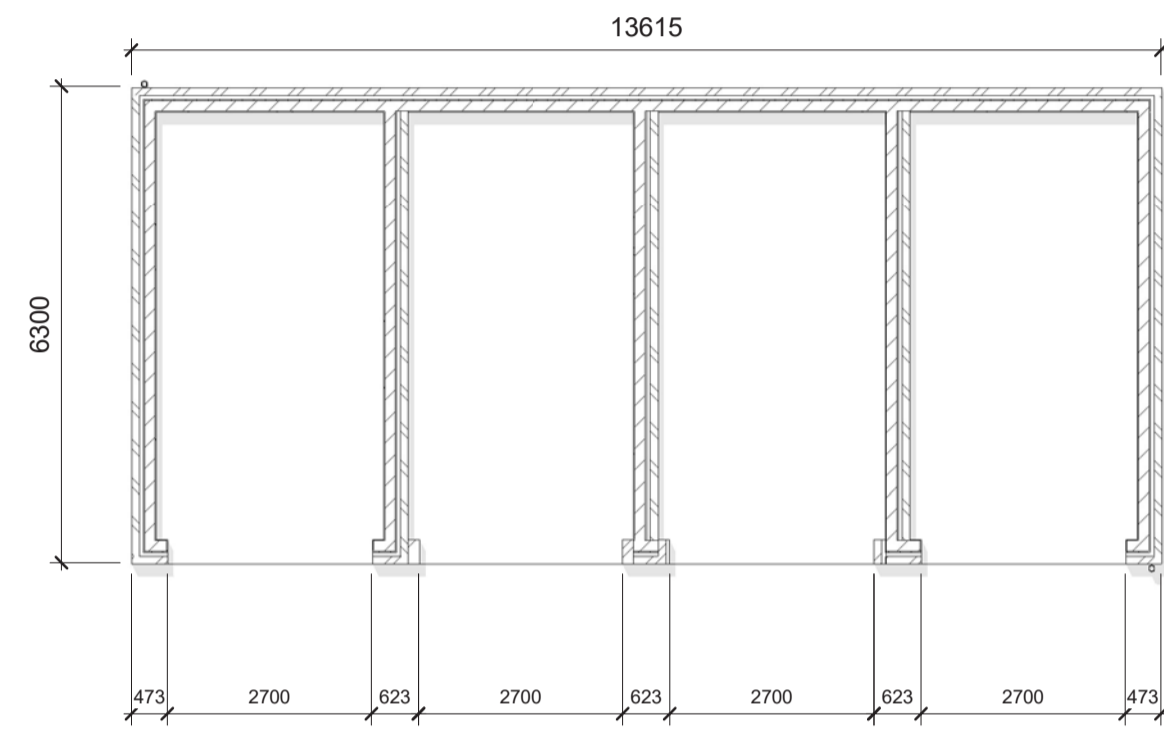


GARAGE TYPE 2 - RIGHT ELEVATION  
scale: 1:100

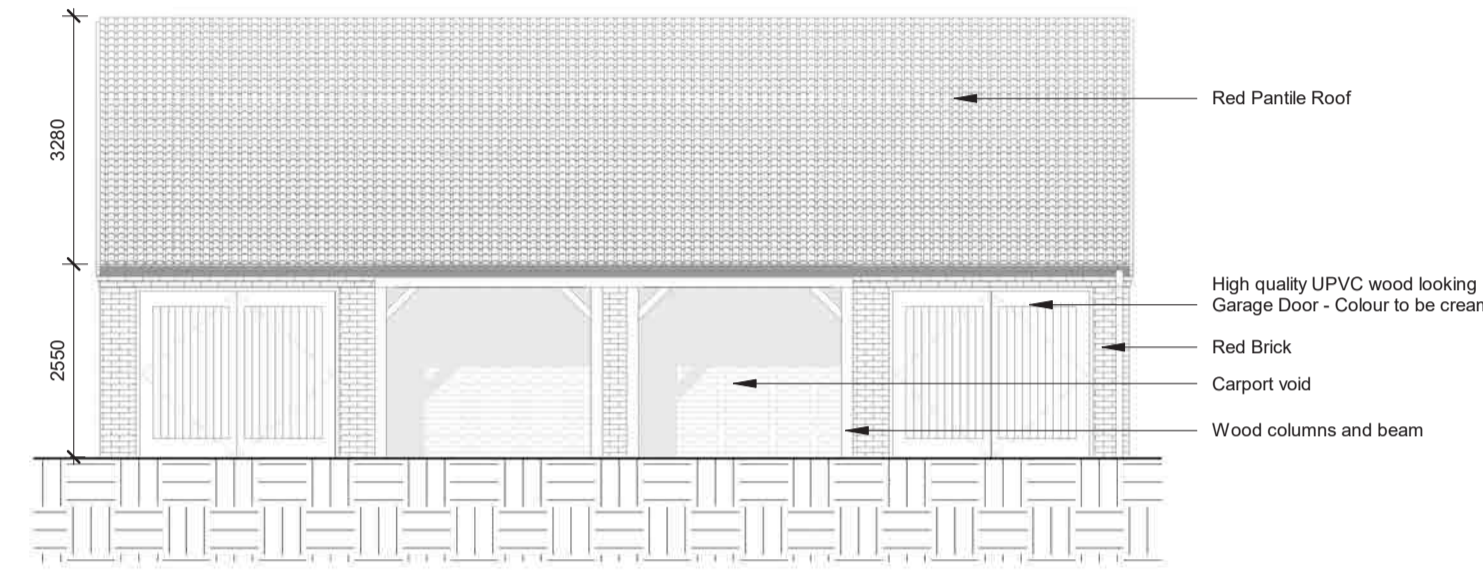


# DOUBLE GARAGE TYPE 3

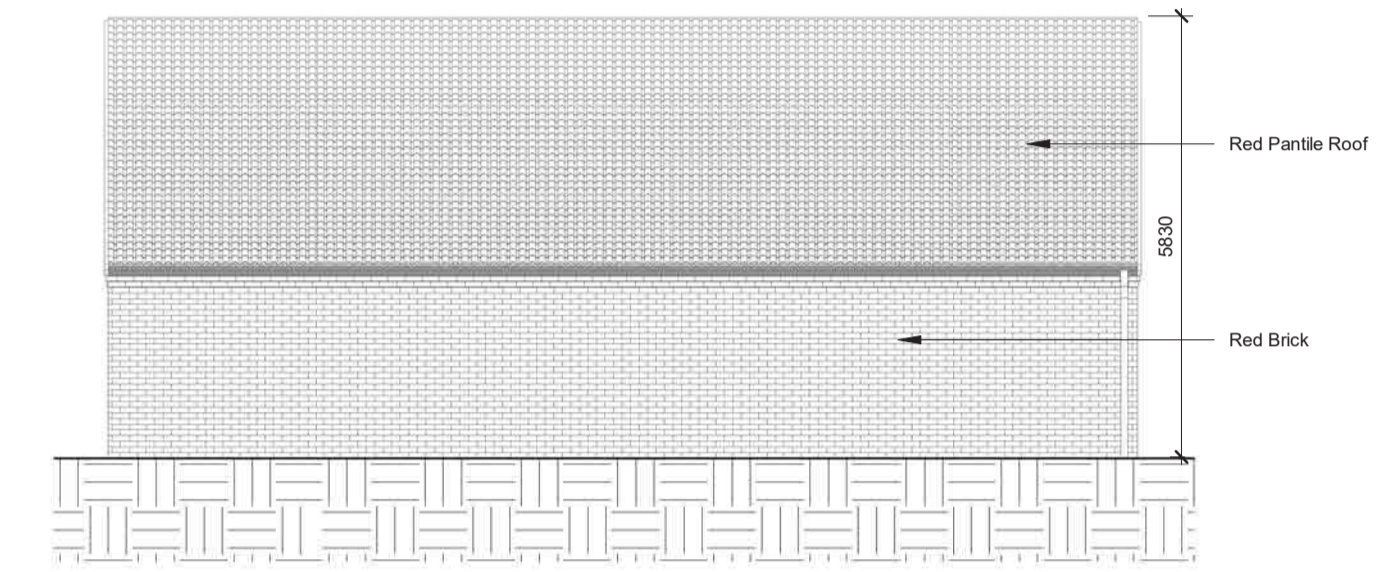
LAND REAR OF THE BLUE BELL INN, LOW STREET,  
EAST DRAYTON, NOTTINGHAMSHIRE, DN22 0LN



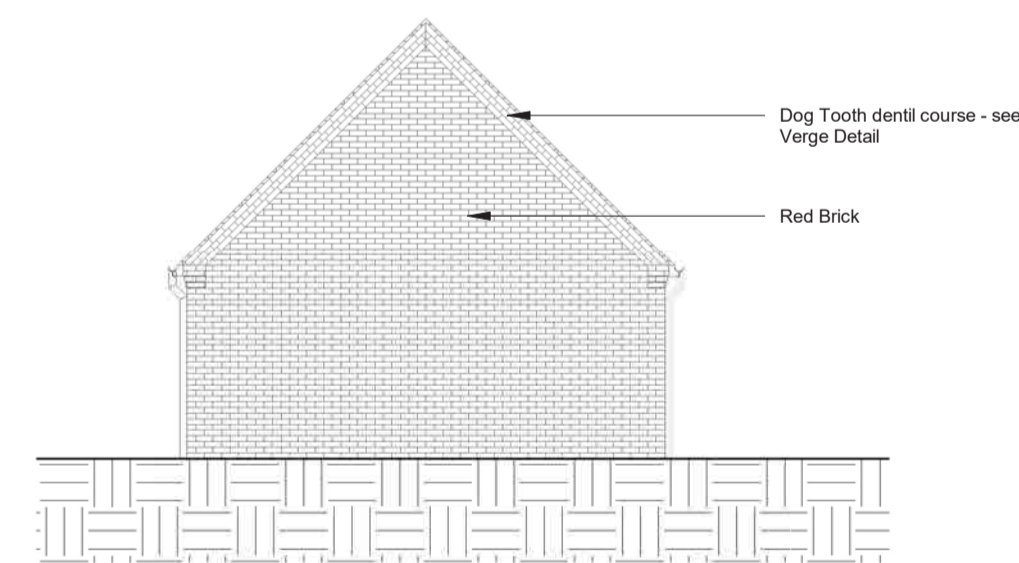
GARAGE TYPE 3 - GROUND FLOOR  
scale: 1:100



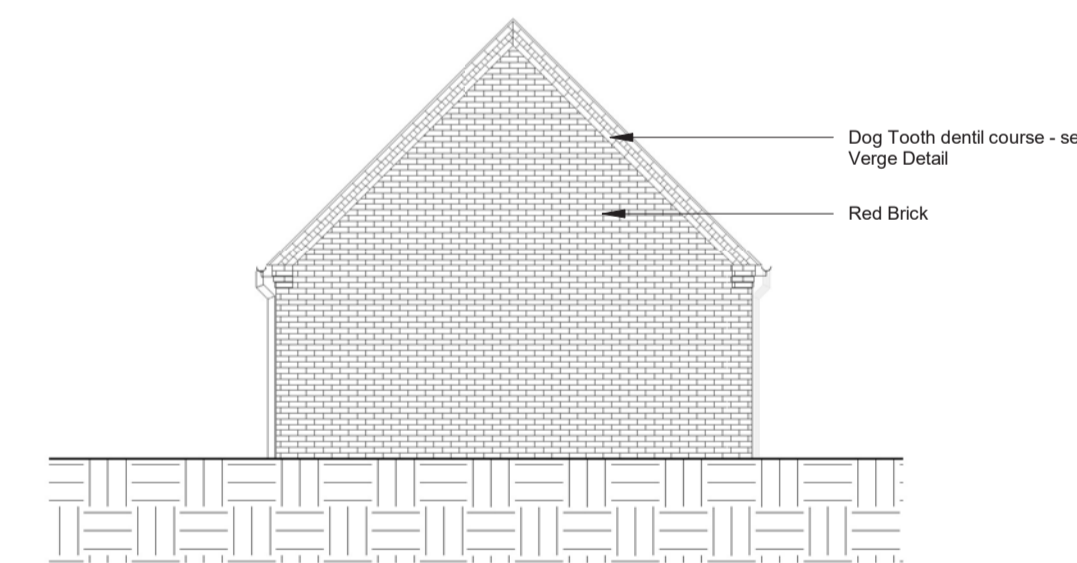
GARAGE TYPE 3 - FRONT ELEVATION  
scale: 1:100



GARAGE TYPE 3 - REAR ELEVATION  
scale: 1:100



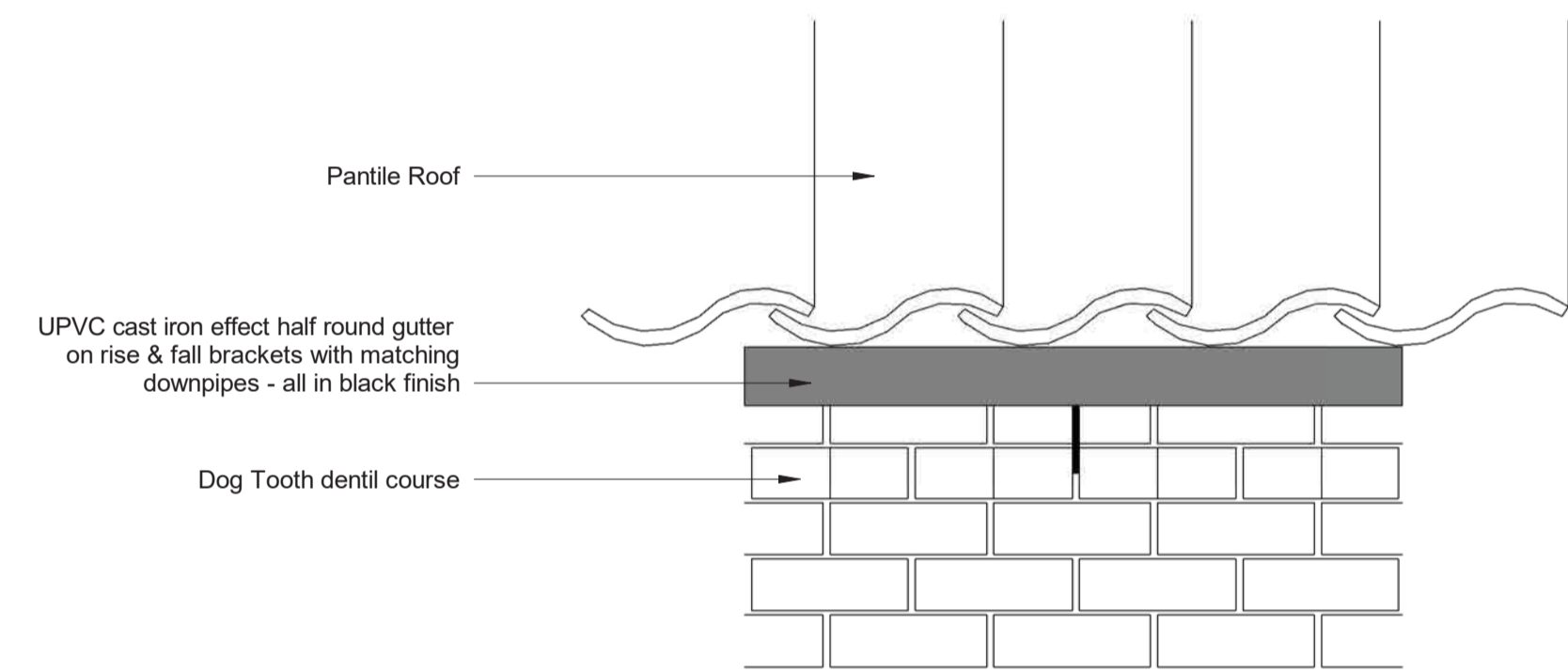
GARAGE TYPE 3 - LEFT ELEVATION  
scale: 1:100



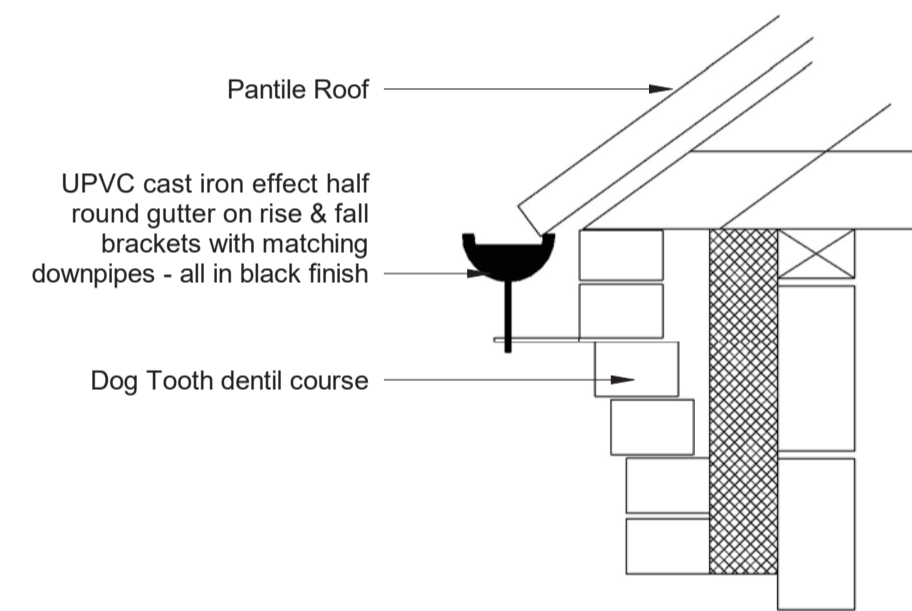
GARAGE TYPE 3 - RIGHT ELEVATION  
scale: 1:100

# GENERAL APPROVED DETAILS EXTRACT

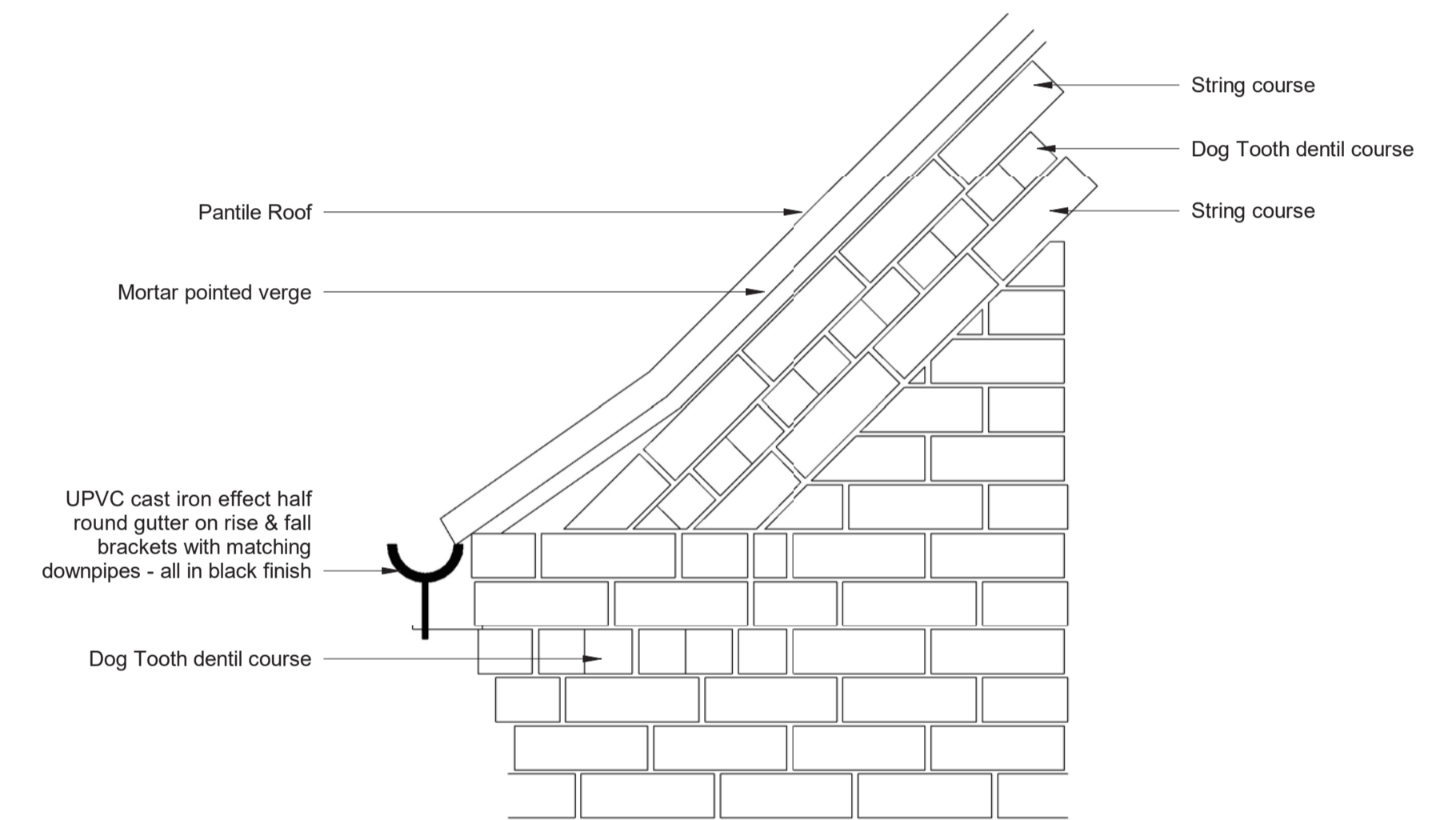
LAND REAR OF THE BLUE BELL INN, LOW STREET,  
EAST DRAYTON, NOTTINGHAMSHIRE, DN22 0LN



EAVES DETAIL  
scale: 1:10



EAVES SECTION  
scale: 1:10



VERGE DETAIL  
scale: 1:10